



Item
Meeting..... 2016 May 09

COUNCIL REPORT

TO: CITY MANAGER **DATE:** 2016 May 04

FROM: DIRECTOR PLANNING AND BUILDING **FILE:** 71130 20

SUBJECT: METROTOWN DEVELOPMENT PLAN UPDATE:
PRELIMINARY VISION, PRINCIPLES, AND LAND USE FRAMEWORK

PURPOSE: To seek Council endorsement of the preliminary vision, principles, and land use framework for the update of the Metrotown Development Plan and to initiate a public input process to seek community feedback.

RECOMMENDATIONS:

1. **THAT** Council endorse the preliminary vision, principles, and land use framework for the update of the Metrotown Development Plan, as a basis for receiving public input, as outlined in Sections 5, 6, and 7 of this report.
2. **THAT** Council authorize staff to undertake a public input process on the preliminary vision, principles, and land use framework for the update of the Metrotown Development Plan, as outlined in Section 7 of this report.

REPORT**1.0 INTRODUCTION**

On 2016 April 26, this report was considered by the Planning and Development Committee, and was referred back to staff for minor text changes and enhancements to the proposed public input process. Those changes have been incorporated into this report, which is now being forwarded to Council to seek endorsement of the preliminary vision, principles and land use framework, which would form the basis of obtaining public input on this initial phase of the update to the Metrotown Development Plan. This Plan update process for Metrotown provides the opportunity to create a true downtown for Burnaby; one that enables the highest order of land use and development supported by social, recreation, entertainment, and cultural amenities important to all of Burnaby's residents, businesses and employees.

This report outlines Metrotown's context and influences; describes its evolution over time; establishes the preliminary vision, principles, and land use framework to guide the update; and, proposes a city-wide public input process. With the approval of this report, staff would initiate a broad reaching public input process over the next several months, to guide the preparation of a draft Metrotown Development Plan in the Fall of 2016.

To: City Manager
From: Director Planning and Building
Re: Metrotown Development Plan Update
2016 May 04 Page 2

2.0 AREA CONTEXT

Metrotown is prominently located on the Kingsway Ridge in the southwest quadrant of Burnaby. The boundaries are generally defined by Boundary Road and Central Park to the west, Royal Oak Avenue to the east, Imperial Street to the south, and a varied northern boundary including Bond and Dover Streets (see Figure 1). The Plan area totals 297.44 hectares (735 acres) and is currently home to approximately 25,000 residents. To the north and south of the Plan area are established single- and two-family neighbourhoods. To the east is the Royal Oak Community Plan Area, and to the west is the City of Vancouver. Metrotown is located at the geographic centre of Metro Vancouver and is connected by major transportation linkages including Kingsway, Willingdon Avenue and the Expo SkyTrain line. The area is also a transportation hub in that it is directly served by two SkyTrain stations (Patterson Station and Metrotown Station) and related bus routes and exchanges, with Metrotown Station being one of the most highly used stations in the network. The Royal Oak Station is located further southeast in close walking distance to the Metrotown area. In addition to Metrotown’s many parks and open spaces, one of the area’s key features is Central Park, which is both a city and regional destination for sport, cultural and leisure activities.

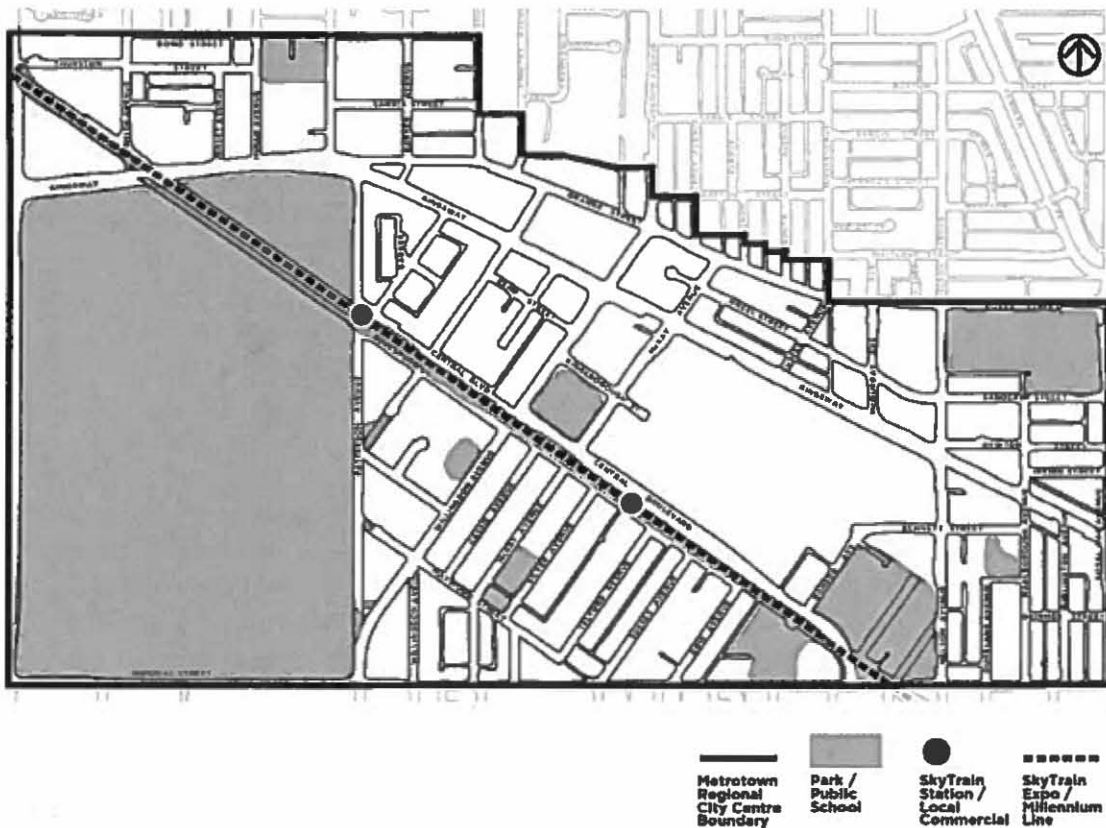


Figure 1: Adopted Metrotown Development Plan Area

To: City Manager
 From: Director Planning and Building
 Re: Metrotown Development Plan Update
 2016 May 04 Page 3

3.0 CONTEXT FOR THE METROTOWN DEVELOPMENT PLAN UPDATE

In 1977, the first comprehensive Metrotown Development Plan was adopted, which established Metrotown as the primary town centre in the city, with the broadest mix of uses and opportunities to live, work and play. Since the adoption of the 1977 Plan, the city and the town centre have evolved in areas such as urban design, mixed-use development, community amenities, public art, and sustainability. More recent policies and standards in these areas have been established to guide future development throughout the city, in accordance with the city's Official Community Plan.

With the growth and evolution of the city and the town centre, an updated Metrotown Development Plan is necessary to address the following:

- *New City-wide policies and standards*

Since the 1977 Plan was adopted, the city has adopted several key policies and standards that have had, and will continue to have, a direct impact on the development and growth of Metrotown. These policies include the Burnaby Official Community Plan (1998), the Burnaby Transportation Plan (1995), the three Sustainability Strategies (Economic Development Strategy (2007), Social Sustainability Strategy (2011), and the forthcoming Environmental Sustainability Strategy), the 's' Category Zoning (2010), the Community Benefit Bonus Policy (1997), and the Town Centre Public Realm Design Standards (2015). A Plan update will reflect these new city-wide policies and standards to guide development into the future.

- *Accommodating regional growth*

In 2011, Metro Vancouver and its member municipalities adopted the Regional Growth Strategy (RGS) which addressed the main challenge of how to accommodate anticipated growth in the region. Through its Regional Context Statement, Burnaby has committed to accommodating an additional 125,000 people over the next 25 years. Identified as a Regional City Centre within the RGS, Metrotown is anticipated to accommodate a significant component of the city's residential and commercial growth. A Plan update will respond to the city's commitment to accommodate Burnaby's share of regional growth over the long-term, in locations well-served by transit.

- *Physical changes*

Metrotown has experienced significant growth in the decades since the adoption of the 1977 Plan. It has matured and the physical landscape has changed considerably. New development, in accordance with the 1977 Plan, has changed Kingsway and areas around transit and SkyTrain from automobile-oriented commercial and low intensity residential uses, to a dynamic walkable, transit-oriented mixed-use community that is served by parks, civic facilities, amenities, and numerous commercial and business enterprises. A fundamental change to the area came with the introduction of the Expo SkyTrain line, which has had a significant impact in terms of accessibility to the core and the surrounding communities. A Plan update will integrate these physical changes with a new land use framework to guide the development of Metrotown into the future.

To: City Manager
 From: Director Planning and Building
 Re: Metrotown Development Plan Update
 2016 May 04 Page 4

- *The desire and need for more community amenities*

As Metrotown has grown, the desire and need for community amenities that serve the population has increased. Various new amenities, as well as expansions to existing facilities, have been achieved in alignment with the 1977 Plan. Metrotown is currently served by Central Park, the Bonsor Recreation Complex and Bonsor Park, the BC Parkway, Metro Skate Park, the new Beresford Art Walk, as well as four neighbourhood parks which include Kinnee, Loblely, Inman Green and Maywood Park. Complementing these parks are the school sites of Marlborough Elementary and Maywood Community School, as well as Chaffey Burke Elementary, located just outside the town centre boundary. The Civic Square and Bob Prittie Library provide central gathering spaces for the community. Metrotown is also served by the new Bonsor 55+ Centre, and two new community resource centres, Metrotown Community Resource Centre and Pioneer Community Resource Centre. Since the adoption of the 1977 Plan, the Community Benefit Bonus Policy and the new Priority Amenity Program have been adopted to enable the continued provision of a wide range of community benefits. A Plan update will provide further opportunities and direction for the achievement of additional future community amenities.

- *Consolidation of Plan updates*

Since the 1977 Plan was adopted, several minor Plan amendments have been adopted by Council. These Plan updates included site specific changes to land use and density, including pursuing the opportunity for mixed-use sites to address specific neighbourhood conditions. A Plan update will consolidate all of these smaller amendments into one cohesive Plan document to guide Metrotown's evolution over the long-term, thereby providing a higher level of clarity for the community.

4.0 PURPOSE OF THE PLAN UPDATE

In addition to responding to the items described above, the advancement of a Plan update, as outlined in the following sections, will focus on refining the Metrotown Development Plan to:

- build on the legacy and successes of the 1977 Metrotown Development Plan;
- accommodate future growth over time and provide varied housing options in alignment with Metro Vancouver's 2011 Regional Growth Strategy and with the City's housing policy;
- enhance community benefits, improve access to services, and advance the livability of Metrotown;
- create a superior public realm and encourage multi-modal transportation improvements in Metrotown for all ages and abilities; and,
- complement the objectives of the City-wide sustainability strategies in the context of Metrotown.

To: City Manager
 From: Director Planning and Building
 Re: Metrotown Development Plan Update
 2016 May 04 Page 5

4.1 Building on the Legacy and Successes of the 1977 Metrotown Development Plan

Prior to the adoption of a comprehensive Official Community Plan, the City of Burnaby first established a development concept for Metrotown as part of the 1969 Apartment Area Study Plan, which includes neighbourhood level land use plans throughout the city, including three in Metrotown: Area Plans J (Smith Avenue – Moscrop to Kingsway), L (Central Park – Metrotown Core) and M (Maywood). These Plans established the foundation and guidelines for many multiple-family and commercial developments in the Metrotown area between 1969 and 1977, including several high-rise apartment complexes. In 1977, the Metrotown Development Plan was adopted by Council, which provided for a more comprehensive vision of a high-density Metrotown Town Centre.

The 1977 Metrotown Development Plan was a visionary document premised on the emergence of Metrotown as the primary urban core within the city. The key tenets of the Plan were to integrate a mix of land uses in the urban core, accommodate growth and change over time, diversify the type and form of housing, create an efficient public transit network and pedestrian environment, and provide a range of public facilities including major parks, public spaces, civic uses and recreation complexes. The Apartment Study Area Plans and the 1977 Metrotown Development Plan were applied concurrently between 1977 and 1987, when a finalized Core Area Review was completed that established the Metrotown Development Plan as the single guiding document to direct development in the Metrotown Town Centre area.

The land use designations within the adopted 1977 Plan provide for a mix of uses in high-density, medium-density, and low-density building forms, and stand-alone commercial uses, as shown in Figure 2.

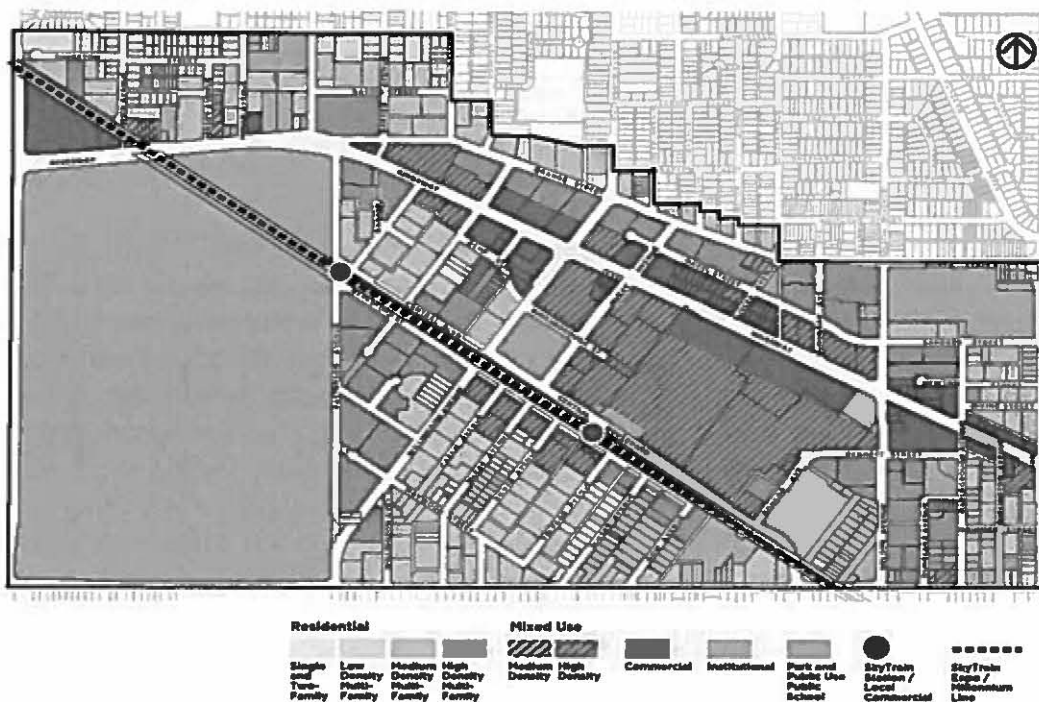


Figure 2: Adopted Metrotown Development Plan Generalized Land Use Map

To: City Manager
 From: Director Planning and Building
 Re: Metrotown Development Plan Update
 2016 May 04 Page 6

To organize land use and development, the adopted 1977 Plan created 14 sub-areas within Metrotown. These sub-areas, as shown on Figure 3, were intended to create distinct neighbourhoods that were organized around dominant neighbourhood characteristics, while also collectively functioning as an integrated town centre.

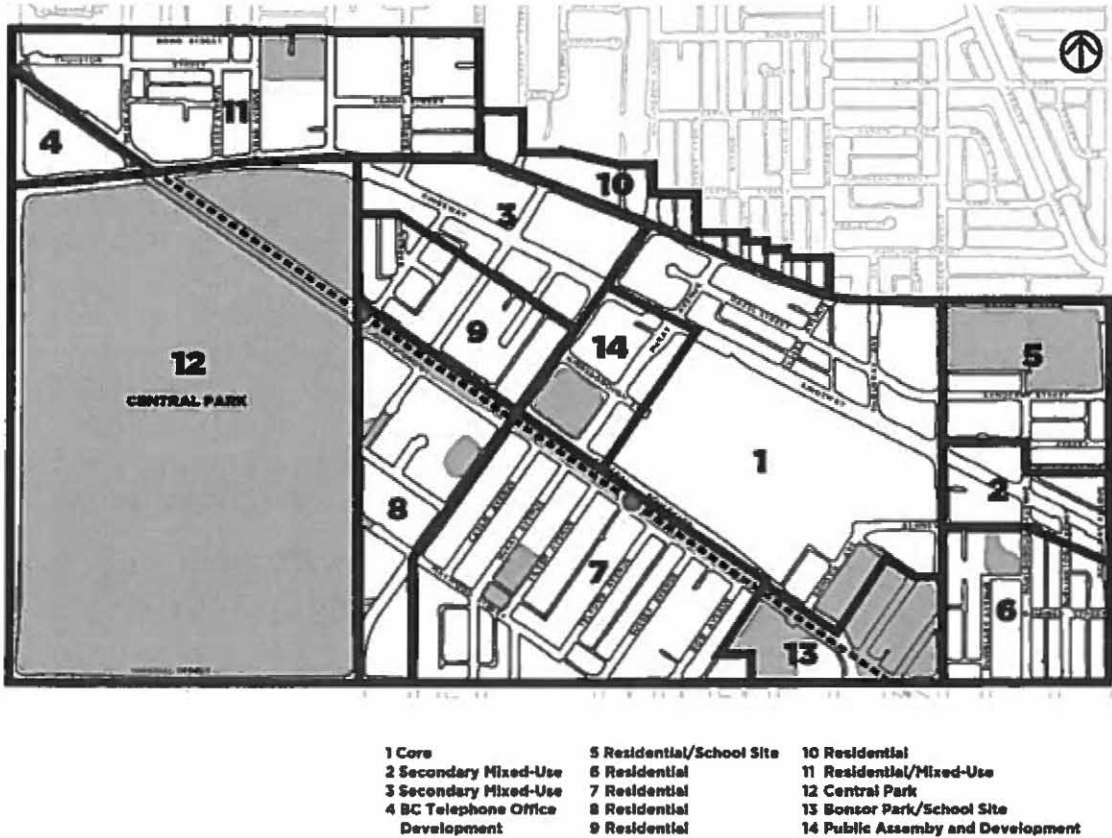


Figure 3: Adopted Metrotown Development Plan Sub-Areas

Metrotown today positively reflects the accomplishments of the adopted 1977 Plan, including mixed land uses in highly urbanized forms, multi-modal transportation connections, an extensive park and open space network, and community amenities. Since the adoption of the 1977 Plan, there have been updates to land use designations, reflective of changes in area context, such as the construction of the Expo SkyTrain line in 1986. This Plan update proposes to consolidate the numerous amendments that have been accommodated since the 1977 Plan's adoption, and build upon the vision of its policy, including the development of a civic identity and distinct neighbourhoods, to guide land use, development, urban design and neighbourhood character in Metrotown into the future. This Plan update is setting the stage to guide Metrotown's growth and development over the next fifty plus years, much like the 1977 Plan did over the last forty years.

To: City Manager
 From: Director Planning and Building
 Re: Metrotown Development Plan Update
 2016 May 04 Page 7

4.2 Accommodate Growth and Provide the Opportunity for Varied Housing Options

Burnaby, through its adoption of the Metro Vancouver Regional Growth Strategy (RGS), has committed to accommodating a projected population of an additional 125,000 people in the city over the next 25 years for a total population of 345,000 people by 2041. To meet this demand, Metrotown is anticipated to accommodate a significant share of this growth.

Growth and development in Burnaby is broadly directed by the Official Community Plan and its Residential Policy Framework, which calls for the development of the city's four town centres to accommodate much of the new residential growth through redevelopment of lands that are near transit and community services. The Metrotown Development Plan update, through increasing the capacity of existing land areas in the town centre, provides an opportunity to accommodate a share of this anticipated future growth. In addition to accommodating growth, the Plan update will support a diversity of housing types and tenures, with a range of unit types, to meet citizens' needs through all stages of life.

To help provide for housing choice along the housing affordability spectrum, the city has supported a number of housing policies, regulations, and partnerships to encourage the development of special needs housing and non-market housing. Burnaby's 2015 "Growth Management and Housing Policies in Burnaby" report describes the city's role as a facilitator in the delivery of housing initiatives, which would be supported by the Plan update, with the goal of partnering with provincial, federal and non-profit agencies for the delivery of non-market housing.

4.3 Enhance Community Benefits, Improve Access to Services, and Advance the Livability of Metrotown

Community livability is enhanced by elements that contribute to quality of life. These elements include the quality of the built and natural environments; opportunities for economic and social prosperity, education, health and wellness, and cultural, civic, entertainment, and recreational opportunities.

Burnaby established a Community Benefit Bonus Policy in 1997 to enhance Metrotown and other Town Centres as thriving neighbourhoods that meet citizen needs. The policy enables the City to grant additional residential density in Town Centres in exchange for contributions towards community benefits. Residential developments that utilize bonus density, plays a key role in providing and/or funding community amenities that contribute to a thriving and livable place. In addition, Community Benefit Funds (cash contributions-in-lieu) are set aside in specific Town Centre and city-wide accounts for the provision of future community amenities and affordable and/or special needs housing.

In 2014, Council adopted a policy framework to prioritize projects that could be funded or partially funded by the Community Benefit Bonus program. The priority amenity identified for Metrotown is the development of a major performance/event centre. The facility would be a city-wide destination capable of hosting performing arts, installations/exhibitions, and a broad range of community events, civic occasions, and significant gatherings. It would be intended to be a

To: City Manager
 From: Director Planning and Building
 Re: Metrotown Development Plan Update
 2016 May 04 Page 8

local community and civic oriented centre that is highly accessible to citizens in Metrotown and Burnaby as a whole. In addition, a south Burnaby ice arena has been identified as a further priority to serve residents, including those in Metrotown.

The Plan update would incorporate the existing priorities for community benefits and set a framework for future priority amenities that would contribute to a vibrant, inclusive and sustainable Metrotown over the long-term.

4.4 Create a Superior Public Realm and Multi-modal Transportation Improvements

Arising from the desire for higher standards for public realm improvements in town centres, Council adopted the Town Centre Public Realm Design Standards in 2015. These standards outline the technical requirements and designs for town centre streets to make them complete streets; providing for vehicle lanes and parking, widened sidewalks, bicycle facilities, significant trees, public art, colourful rain gardens, and street and pedestrian lighting. The street designs integrate pedestrian, cyclist, transit and driving networks with sustainable stormwater management, urban forestry, street lighting, public art and place-making functions to create accessible and complete streets. In accordance with rezoning and subdivision requirements, developers provide the necessary land dedications and funds to improve the public realm through the implementation of the standards through the development process.

The Plan update would support the implementation of the requirements for Town Centre Public Realm Design Standards and explore opportunities for broader connectivity within Metrotown, specifically with respect to road connections and pedestrian, cycling, and transit routes. Part of this improved connectivity will be in the form of a finer grained urban grid pattern of streets, open spaces, and public realm opportunities that better integrate neighbourhoods and improve upon the development pattern in Metrotown's core.

4.5 Complement Burnaby's Sustainability Strategies

The City of Burnaby's approach to community sustainability is outlined in three comprehensive strategies: the Economic Development Strategy (2007), the Social Sustainability Strategy (2011), and the draft Environmental Sustainability Strategy (currently in progress). The policy direction in these strategies informs the preliminary vision, principles, and land use framework for Metrotown that are outlined in this report.

The City's economic development goals and strategies, as outlined in Burnaby's Economic Development Strategy (EDS), are to maintain and increase the diversity of the local economy; increase the total number of jobs and total investment in Burnaby; increase the quality and sophistication of the local economy; and, influence growth and change in the local economy. Metrotown plays an important role in the advancement of these goals by supporting the development and growth of a wide variety of local, regional, national, and international businesses to serve residents and visitors of Burnaby and the broader region. The Strategy supports a strong mix of residential, employment, commercial, and entertainment land uses in Metrotown and urban forms of development that achieve architectural excellence, and a strong relationship to public transit and the surrounding public realm.

To: City Manager
 From: Director Planning and Building
 Re: Metrotown Development Plan Update
 2016 May 04 Page 9

Burnaby's Social Sustainability Strategy focuses on strategic priorities to create more inclusive, livable and resilient communities. Metrotown can contribute to this city-wide vision through an approach to community development that provides a strong, diverse and vibrant economy; a variety of housing options for residents; and convenient access to health services, recreation and the natural environment. Metrotown has a major role in the advancement of social priorities including the celebration of diversity and culture, and the fostering of a vibrant community-oriented arts and entertainment scene. Further, the Plan update will address community safety through the implementation of Crime Prevention Through Environmental Design (CPTED) principles, and emergency and crisis response preparedness.

The draft Environmental Sustainability Strategy (ESS) articulates the vision, goals, and actions of achieving sustainability and environmental conservation. The Plan update would be consistent with the Environmental Sustainability Strategy's integrated approach to environmental sustainability based on the intent to enhance and connect habitat and green spaces, and to support the development of highly-efficient green buildings with a mix of uses that are well-connected to pedestrian pathways, cycling routes and public transit. The Plan update will also guide new development and provide the opportunity to demonstrate leadership in sustainability and environmental conservation through innovative strategies and approaches to green building, with the goal of reducing energy and water consumption, and helping to manage greenhouse gas emissions.

The intent of the Plan update is to recognize the important role that Metrotown has in accommodating long term growth in a downtown setting; in supporting social, economic and environmental initiatives that will advance the City's sustainability strategies; and, to highlight the implementation of these city-wide strategies. Given the growth management function and policy context for Metrotown, the Plan update is intended to be evolutionary; meaning that it will carry forward the successes of the 1977 Plan by building upon its legacy and land use framework established decades ago.

5.0 OVERVIEW OF THE METROTOWN DEVELOPMENT PLAN UPDATE

The following sections describe the scope of the proposed Metrotown Development Plan update, the preliminary vision and principles, and land use framework.

5.1 Scope of the Metrotown Development Plan Update

The scope of the Metrotown Development Plan update is to review and update the adopted 1977 Plan. This update will be focused on the establishment of a new vision and principles to guide development and growth over the next fifty years or so, as well as a new land use framework to establish a thriving downtown for the City of Burnaby.

The new vision, principles and land use framework are to complement and strengthen the City's existing policy directions, such as: meeting growth management commitments under the Regional Growth Strategy; securing public realm and community amenities; providing sufficient residential capacity to support the facilitation of market and non-market housing; and supporting the City's Sustainability Strategies.

To: City Manager
 From: Director Planning and Building
 Re: Metrotown Development Plan Update
 2016 May 04 Page 10

5.2 Preliminary Vision and Principles

The draft vision for Metrotown is:

To establish an exciting, inclusive, and sustainable downtown for Burnaby; one comprised of well-connected neighbourhoods that provide a sense of place and community identity; provide major office, business, tourism and employment opportunities; provide a variety of housing choices; provide civic, recreational, and cultural amenities and facilities that serve the needs of the Metrotown community and Burnaby as a whole; is supported by a comprehensive transportation network that promotes a more walkable, healthier, and active community; and provide a high quality public realm that evokes a sense of beauty, creativity, excitement and vibrancy.

The following list of preliminary principles, and their associated goals, will provide broad guidance to help achieve a great downtown for the city.

- *Principle #1 - Metrotown is Burnaby's downtown:*
 - accommodating a significant share of the city's anticipated growth and development into the future;
 - providing the highest concentration and intensity of economic activity in the city;
 - fostering neighbourhood function, character and identity as part of an integrated and well-connected downtown; and,
 - enhancing neighbourhood amenities and public spaces that foster social interactions, serendipity, and healthy living.
- *Principle #2 - Metrotown is an exciting downtown:*
 - creating major streets that are vibrant and active with inviting land uses and urban landscapes that generate pedestrian activity throughout the day and night;
 - developing urban plazas, public squares and civic gathering spaces, for cultural, entertainment, social, and celebratory events, promoting Metrotown as both a city-wide and regional destination; and,
 - encouraging hospitality amenities and services to enhance visitors' experience.
- *Principle #3 - Metrotown is an inclusive downtown:*
 - requiring that physical accessibility is equal to all, regardless of physical ability, age, gender, or cultural background;
 - building on a sense of community and pride by fostering a safe and inclusive downtown; and,
 - facilitating housing options by establishing a land use framework that supports a variety of housing types and tenures.

To: City Manager
 From: Director Planning and Building
 Re: Metrotown Development Plan Update
 2016 May 04 Page 11

- **Principle #4 - Metrotown is a sustainable downtown:**
 - establishing sustainable employment and business activities by concentrating major office and commercial uses near transit, and providing supporting services and infrastructure;
 - promoting future development that reduces energy, water and resource demand and consumption, in alignment with the City's broader environmental initiatives and policies; and,
 - providing amenities and infrastructure that promote healthy living and social well-being by meeting peoples' basic needs, and supporting transportation options that support all modes, which include walking, cycling, and transit.

5.3 Preliminary Land Use Framework

The preliminary land use framework for Metrotown is an evolution of the adopted 1977 Plan and other guiding city policies. At its core, the framework reinforces and establishes Metrotown's role as the city's "downtown" – an urban focal point for growth and development, employment opportunities, housing, arts, culture and entertainment, community services, and amenities.

The preliminary land use framework for Metrotown features a mix of land uses and building forms that collectively support the development of a complete and balanced downtown. As shown on Figure 4, the preliminary land use framework identifies three main land use typologies that are referred to in this report as the Downtown Core, Core Residential, and Ground-Oriented Residential areas.

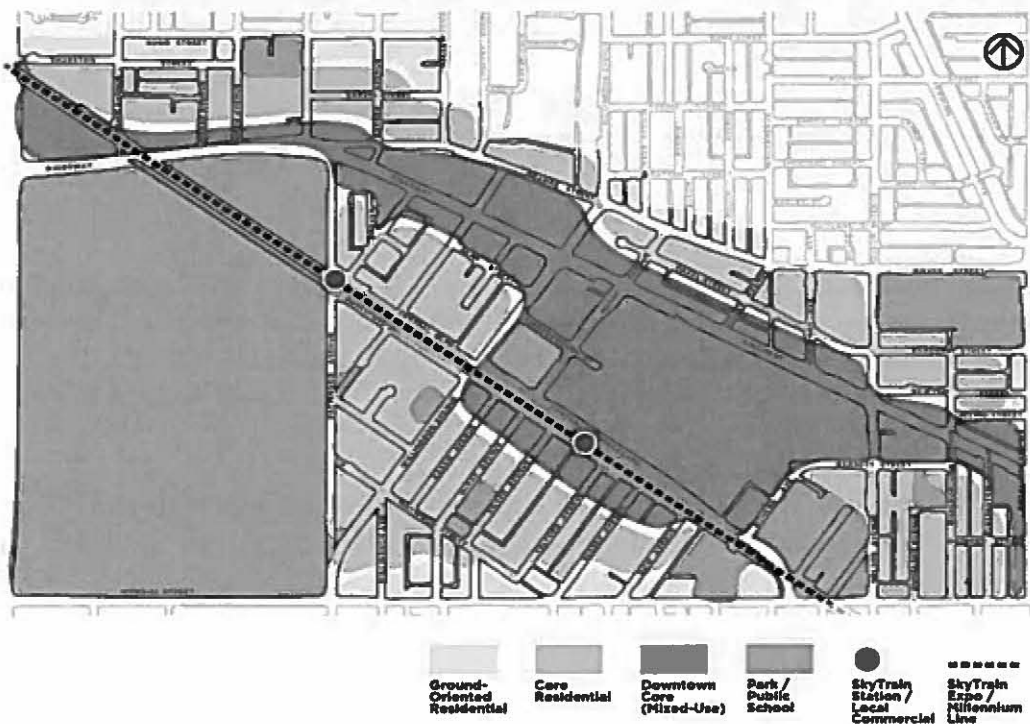


Figure 4: Preliminary Land Use Framework

To: City Manager
 From: Director Planning and Building
 Re: Metrotown Development Plan Update
 2016 May 04 Page 12

The preliminary land use framework also identifies the three different types of building forms proposed for Metrotown: low-rise (generally 1-4 storeys), mid-rise (generally 4-12 storeys), and high-rise (generally 12+ storeys), as shown on Figure 5. It is important to note that mid-rise areas may incorporate low-rise building forms and high-rise areas may incorporate low to mid-rise forms in the overall built form to address and improve the urban streetscape.

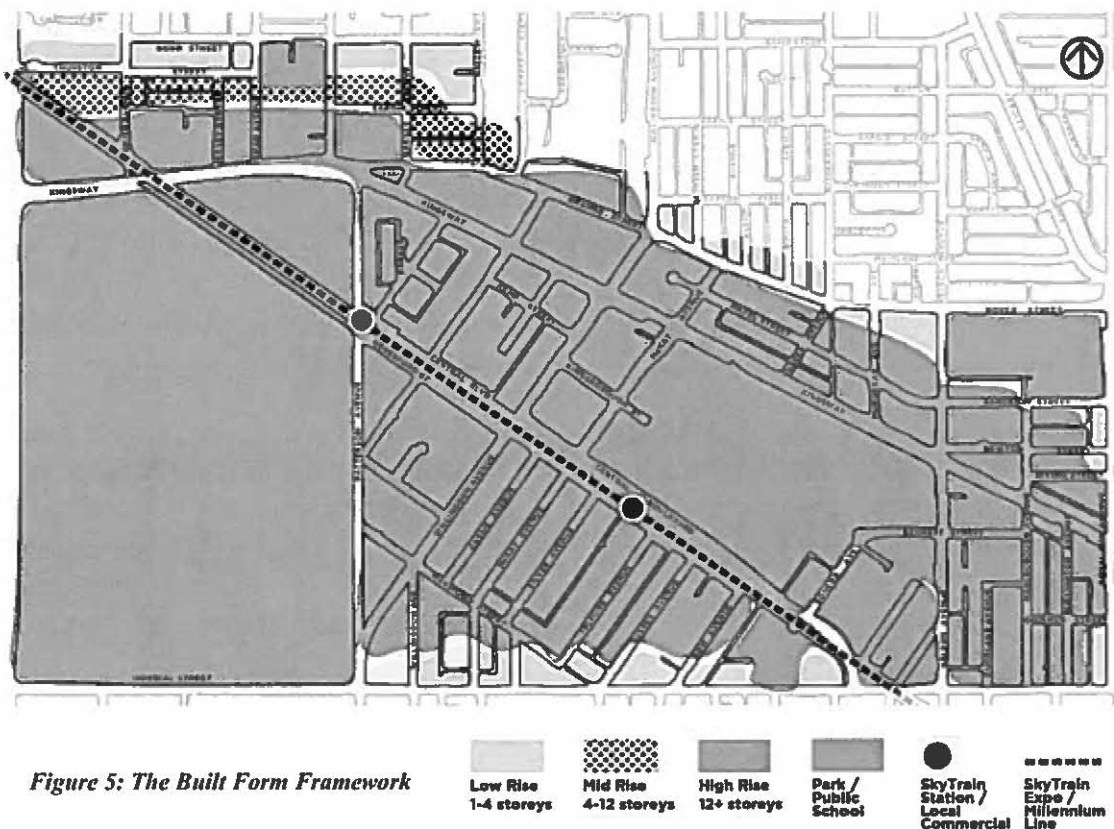


Figure 5: The Built Form Framework

The preliminary land use framework proposes building forms that transition in scale from high-rise forms in the downtown core to the ground-oriented housing near single- and two-family neighbourhoods at the Town Centre boundary, as illustrated by Figure 6.

Downtown Core

The Downtown Core area is to be characterized by commercial podiums and high-rise office and residential building forms (generally 12 stories or higher). These forms are proposed to be concentrated along Kingsway, Central Boulevard, Beresford Street, and Grange Street.

To: City Manager
 From: Director Planning and Building
 Re: Metrotown Development Plan Update
 2016 May 04 Page 13

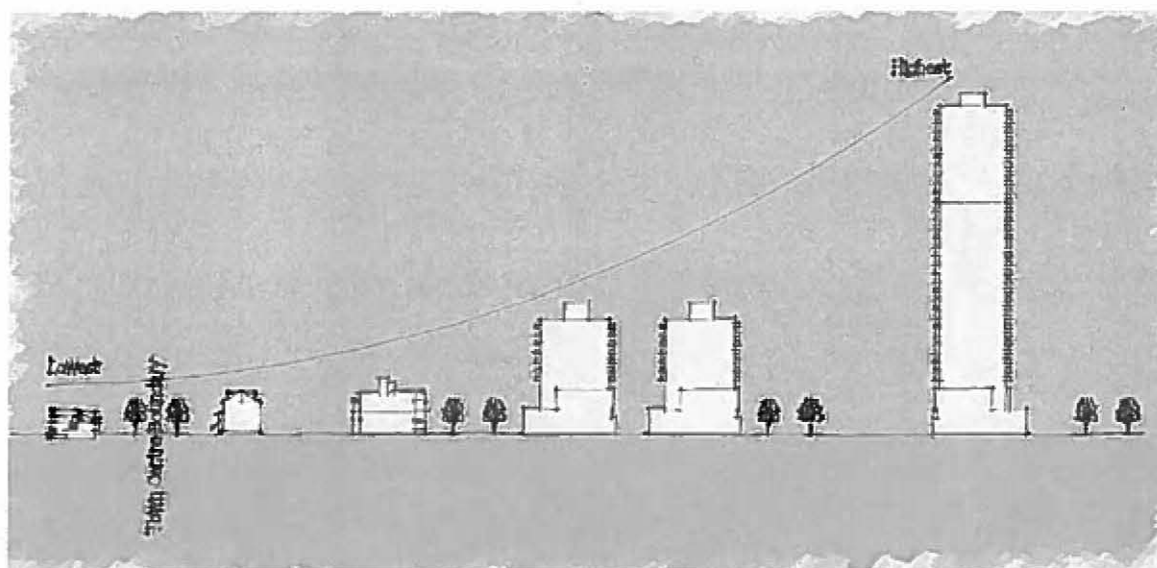


Figure 6: Scale of development increases towards the Metrotown downtown core

Commercial podiums are to frame the public realm (e.g. street, plaza, park, open space) and establish a continuous frontage, in a form and scale that respects the character of the surrounding neighbourhood. Building setbacks create space for plazas, outdoor displays and seating. Podiums are to be designed with architectural features, details, and site design elements that are of human proportion and clearly oriented for pedestrian activity. At grade, commercial podiums are to provide active street-oriented uses, retail frontages, display windows, attractive landscaping and screening, colourful and distinct signage, special lighting, weather protection, and a variety of high-quality exterior materials. Where appropriate, smaller store-fronts with frequent entrances would contribute to the pattern and character of an exciting downtown.

Figure 7 provides an illustrative concept for a commercial podium with setback high-rise residential towers along Beresford Street, adjacent to the Expo SkyTrain line.

The siting and form of residential buildings should consider existing and future development in the area to achieve a varied and visually interesting skyline. The orientation, massing, and siting of higher buildings are to be designed to maximize the distances between buildings to provide privacy; maximize sunlight access to the public realm and high traffic pedestrian corridors; and create sightlines. Buildings are to provide architectural interest, in their vertical and horizontal expression, other architectural elements, and building materiality and colour. Tower tops are to provide architectural interest to the downtown skyline and provide an aesthetic treatment to the building.

High-density, mixed-use developments in the downtown core area will be encouraged to respond to specific opportunities, including prominent intersections, corner lots, natural features, open spaces and views. A strong focus is placed on the provision of public art and the commitment to high-quality, timeless and sophisticated architecture. The redevelopment of major town centre blocks, including the Metrotown mall site, should incorporate a fine-grained system of public streets, lanes, pathways and open spaces.

To: City Manager
 From: Director Planning and Building
 Re: Metrotown Development Plan Update
 2016 May 04 Page 14

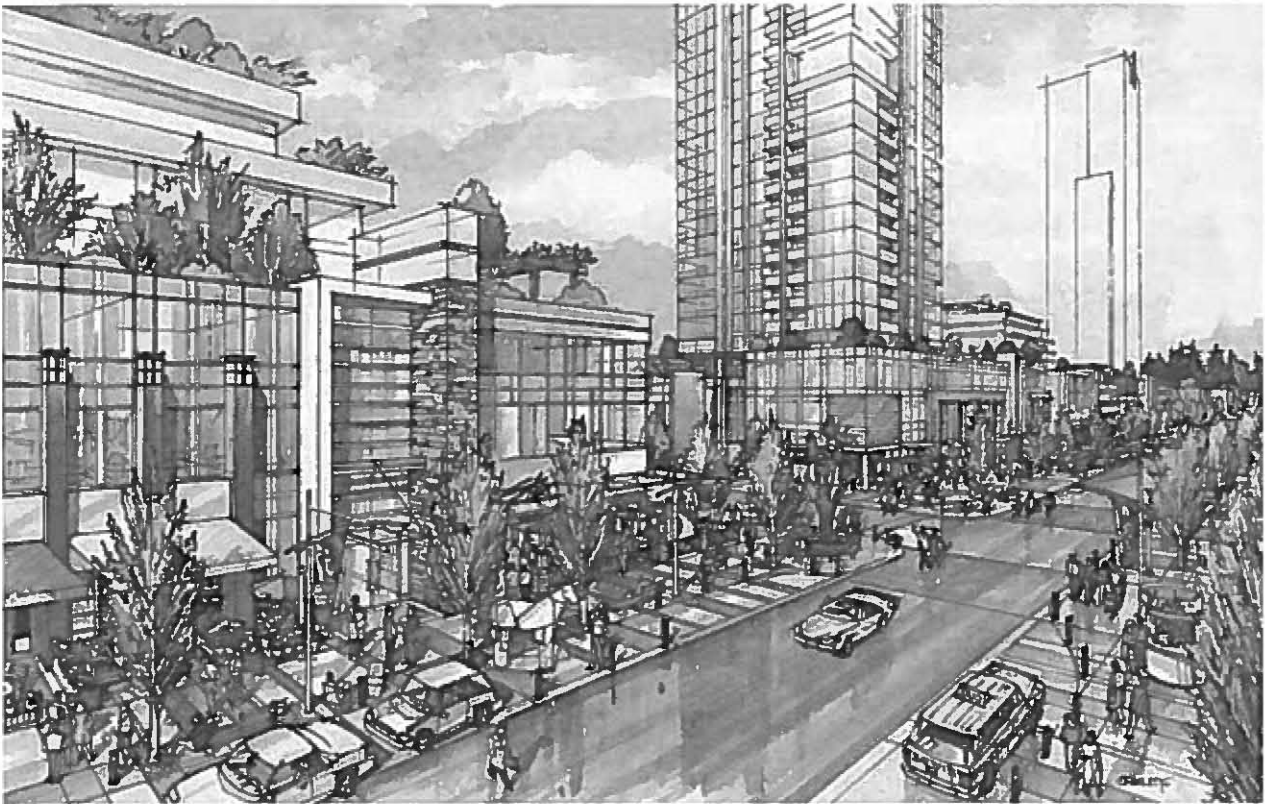


Figure 7: Concept for commercial podiums and high-rise residential towers along Beresford Street in the Downtown Core

The public realm designs should be appealing and visually interesting, thus enhancing the attractiveness of Metrotown and encouraging people to use these spaces. An example of this approach is the Beresford Art Walk, located in the Maywood neighbourhood, which provides a continuous stretch of public art displays for visitors, residents and patrons to enjoy. Public Realm Design Standards for Town Centre Streets complement art and beautification initiatives with requirements for widened sidewalks, seating, pedestrian lighting, rain gardens, street trees, and cycle tracks.

Core Residential

The Core Residential area is to be characterized by mid- to high-rise multiple-family residential buildings with ground-oriented townhouses or live/work units set close to the street. Such forms are to provide a transition between high-rise downtown mixed-use developments and ground-oriented and mid-rise residential neighbourhoods on the periphery of Metrotown. The core residential forms are to be most prevalent near major roads such as Kingsway, Central Boulevard and Nelson Avenue.

Three to four storey townhouses and live/work units are envisioned to frame the street with setbacks that are extensively landscaped. Having ground-oriented housing with front doors facing the street provides a human-scaled development form, and an overall welcoming neighbourhood character. High-rise apartment towers are to be suitably set back to the interior of

To: City Manager
 From: Director Planning and Building
 Re: Metrotown Development Plan Update
 2016 May 04 Page 15

the site, or conversely more prominently located at the corner of wider intersections to visually narrow the street.

Figure 8 provides an illustrative concept for townhouses fronting Telford Avenue, which includes extensive landscaping and a walkable public realm.



Figure 8: Concept for townhouses and high-rise residential towers along Telford Avenue in the Core Residential area

Sufficient residential density within the Core Residential area will help to support the demand for restaurant, retail, office and entertainment uses nearby. The residents in these areas will be within walking distance of downtown commercial services and major transit nodes. The public realm will support walking, cycling and public transit as preferred travel modes along with vehicle movements, with the provision of wide sidewalks, seating areas, pedestrian lighting, open spaces, pathways and tree-lined streets.

Ground-Oriented Residential

The Ground-Oriented Residential area is to be characterized by multiple-family residential buildings in low-rise forms (generally 1-4 stories), including row-houses, townhouses and low-rise apartments, all of which would have direct entry to the street. These forms would primarily be identified for transitional areas on the periphery of Metrotown, and are intended to provide a respectful transition to adjacent lower scale single-and two-family areas.

Townhouses and apartments are to be sited and oriented to overlook public streets, parks, walkways, and communal spaces to encourage an interaction between the public and private realm, including the safety of having 'eyes on the street.' Ground floor residential uses are to incorporate individual entrances, elevated from the sidewalk and clearly visible from the fronting street, which ensures the units are approachable and welcoming. Setbacks are to be extensively and attractively landscaped.

To: City Manager
 From: Director Planning and Building
 Re: Metrotown Development Plan Update
 2016 May 04 Page 16

Figure 9 provides an illustrative concept for stacked townhouses along Thurston Street. The residential units are setback from the street with extensive landscaping.



Figure 9: Concept for low-rise residential along Thurston Street in the Ground-Oriented Residential area

Although the Ground-Oriented Residential areas are located on the edges of Metrotown, residents can access the Patterson, Metrotown or Royal Oak SkyTrain stations within a five or ten minute walk (400m to 800m). The public realm will provide strong and clear connections to the SkyTrain stations, commercial services, schools, parks and open spaces with the provision of sidewalks, and cycle and pedestrian pathways. These connections are to be achieved as part of the requirements of the Town Centre Public Realm Design Standards.

6.0 SCOPE OF CHANGES

To express the relative extent of proposed changes between the adopted 1977 Plan and the Plan update, the following sections compare the areas where land uses and built form are proposed to change.

Land Use

The preliminary land use framework recognizes the important role that Kingsway plays as the primary east/west corridor through the heart of Metrotown. Sites fronting Kingsway that are largely currently designated for a single use (i.e. commercial, residential, and institutional) are proposed to be re-designated to allow for mixed-use development. The intent behind this change

To: City Manager
 From: Director Planning and Building
 Re: Metrotown Development Plan Update
 2016 May 04 Page 17

is to concentrate the highest densities and greatest mix of uses in the downtown core, and along the Kingsway corridor.

Other areas that are proposed to be re-designated from single-use to mixed-use include: Royal Oak Avenue, south of Kingsway; Beresford Street, east of Telford Avenue; and Imperial Street, between Nelson and Dunblane Avenues (see Figure 10). The rationale for these changes are summarized as follows:

- *Royal Oak Avenue:* Changing the land use and built form from low-rise residential to a higher density mixed use form is considered supportable as it would complete the mixed-use streetscape (established by the Royal Oak Community Plan), and enable this commercial street to have a second side.
- *Beresford Street:* A substantial portion of Beresford Street has been developed with mixed uses under site specific rezoning amendments. The proposal is to continue this concept in support of the Beresford Art Walk. This would also continue to support transit-oriented development, given the adjacency to the Metrotown SkyTrain Station.
- *Imperial Street:* The development site fronting Imperial Street, between Nelson and Dunblane Avenues is proposed to continue to incorporate a live/work component as part of a high-density residential project (Rezoning Reference #15-49), which is supportable given that Imperial Street is a major collector road with existing and planned commercial uses on the south side of the street.

Of the proposed changes to land use described above, only the change for Royal Oak Avenue and several small sites along Kingsway, between Boundary Road and Patterson Avenue, results in changes to the overall density and built form. Built form along Beresford Street and Imperial Street, and the majority of Kingsway, would not be significantly changed. The high-density sites that are designated solely for commercial along Kingsway are currently able to achieve tower forms with up to 6.0 FAR under the adopted 1977 Plan. The high-density residential sites along Beresford Street, between Telford and Dow Avenues, and along Imperial Street, between Nelson and Dunblane Avenues, are currently able to achieve tower forms with up to 5.0 FAR. Therefore, rather than changing form, these land use changes focus on the creation of complete neighbourhoods with a diverse mix of housing, retail, services, employment, and amenities.

Built Form

The preliminary land use framework would increase the scale of the built form in certain areas of Metrotown. Higher density housing forms are proposed in neighbourhoods surrounding the Downtown Core and the Kingsway corridor. The intent of these built form changes is to increase the development capacity in strategic locations to meet long term housing and employment needs of the city. Moreover, these densities are required to make the proposed commercial uses viable into the future. The proposed changes support the region's investment in transit infrastructure and Metrotown's designation as a Regional City Centre. For the city as a whole, the changes also create strong transitions in scale and urban design from the high-rise mixed-use downtown core to nearby single- and two-family areas.

To: City Manager
From: Director Planning and Building
Re: Metrotown Development Plan Update
2016 May 04 Page 18

The areas shown in Figure 11 are identified as the areas of change, from low-rise apartment and townhouse forms, to mid-rise and high-rise forms. In residential neighbourhoods, high-rise forms are set back to allow for ground-oriented housing to define the street and maintain a pedestrian-scale. This built form concept maintains low-rise residential housing on the edges of Metrotown to establish a respectful relationship to the adjacent single- and two-family dwelling areas to the north and south.

In summary, the adopted 1977 Metrotown Development Plan provides a strong foundation for the development of a successful downtown, with a comprehensive transportation network, an extensive park and open space network, a range of community amenities, and a mix of uses in highly urban downtown forms. The land use and built form changes proposed in the preliminary land use framework would inform the preparation of a draft Metrotown Development Plan, which would further support the amenities, services, employment and population growth that a thriving downtown needs. The goal is to create a downtown that serves all of Burnaby residents, employees and visitors, making Metrotown a city-wide and regional destination.

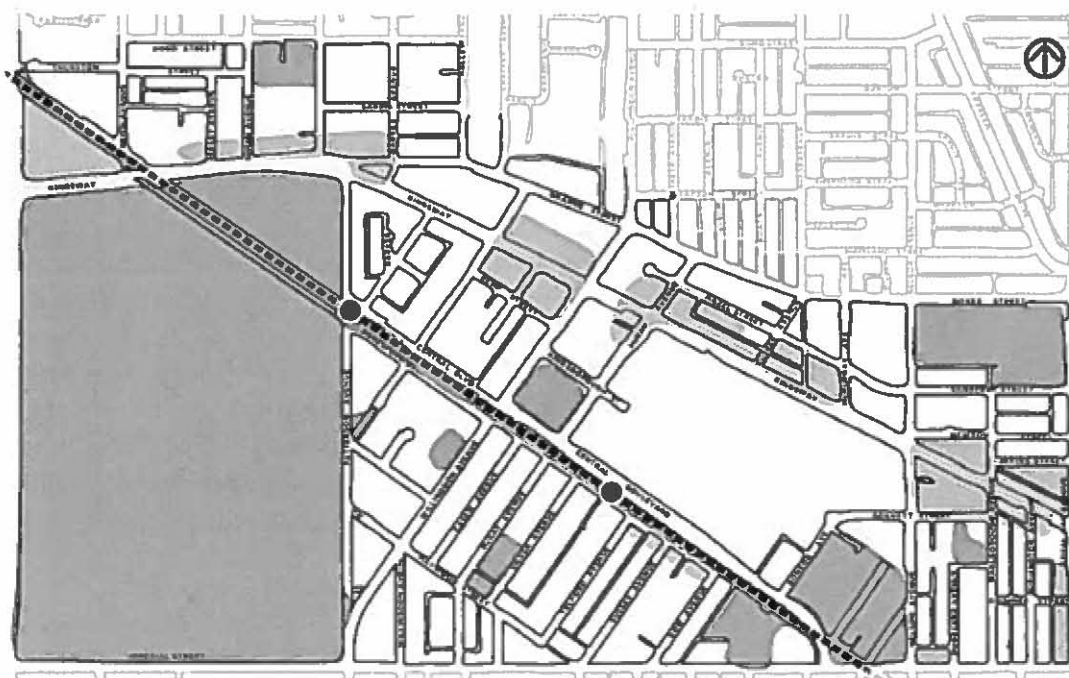


Figure 10: Areas of Land Use Change – Residential to mixed use



To: City Manager
 From: Director Planning and Building
 Re: Metrotown Development Plan Update
 2016 May 04 Page 19

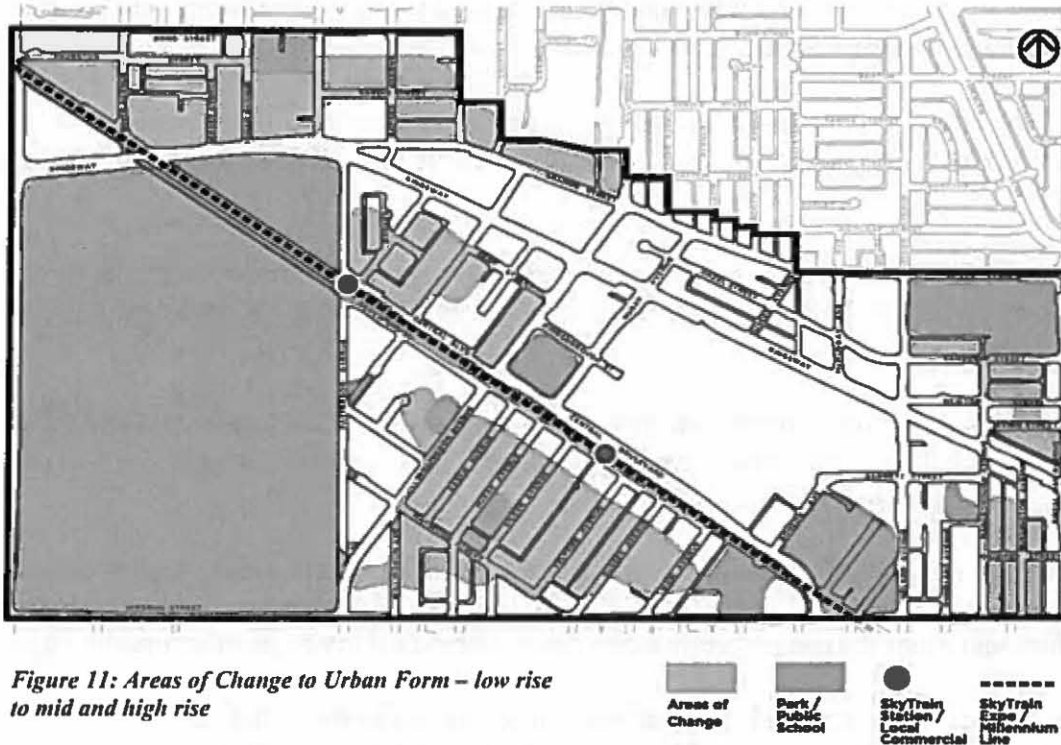


Figure 11: Areas of Change to Urban Form – low rise to mid and high rise

7.0 PUBLIC INPUT PROCESS

The preliminary vision, principles, and land use framework outlined in this report are proposed to be presented to the public for input to help guide the completion of a draft Metrotown Development Plan. The comprehensive nature of the public input process and community outreach is anticipated to garner meaningful feedback from the entire city on the future of its downtown. A key aspect to the public input process would be fostering an identity for Metrotown. It is important that this come from the community, given that the intended focus for Metrotown is as the heart of Burnaby's urban life.

The first phase of the public input process is proposed to include the following:

- *City Webpage:* A dedicated webpage to provide the public with continued access to the most up-to-date resources and information related to the Plan update, including a Plan summary, information panels, survey, and reports.
- *Newspaper and Digital Notices:* Publish digital and printed advertisements in the Burnaby Now and other media to ensure the public is well advised of the Plan update and to direct the public to the webpage and available methods of providing input.

Public Opinion Survey: Provide both a hard-copy and digital public survey along with the summary brochure at City venues and on the webpage. The purpose of the survey is to invite citizens to express their opinions on the preliminary vision, principles, and land use framework for the Plan update.

To: City Manager
 From: Director Planning and Building
 Re: Metrotown Development Plan Update
 2016 May 04 Page 20

- *Consultation:* Attend meetings with stakeholder groups to provide information about the Plan update and to garner input.
- *InfoBurnaby Article:* Publish an InfoBurnaby article to provide information about the Plan update and to encourage citizens to visit the website as well as share their ideas and input.
- *InfoBurnaby Special Edition:* Publish a special edition of InfoBurnaby specific to the Plan update. It will include information advising citizens to visit the website and to share their ideas and input.
- *Pop-up Displays:* Set-up information displays at various locations in the city to provide information about the Plan update and to encourage citizens to fill out surveys, visit the webpage, and share their ideas and input.

To support the above noted public input process, materials such as presentations, display boards, posters, brochures, opinion surveys, video(s), digital, and other media opportunities, renderings, pictures, graphics, and other means are proposed to reach a broad audience from across the city.

Public input that is received is intended to further inform the refinement and presentation of a draft Metrotown Development Plan for Planning and Development Committee and Council consideration, as a basis for a second phase of public consultation, outlined below.

Phase Two of the public consultation process will include taking the draft Metrotown Development Plan, as endorsed by Council, to the public using a similar methodology as in Phase One. This will provide Burnaby citizens with the opportunity to view the draft Metrotown Development Plan and provide their feedback. Staff would seek Planning and Development Committee and Council endorsement of the draft Metrotown Development Plan prior to commencing Phase Two of the public input process.

8.0 NEXT STEPS

In summary, the steps for advancing the draft Metrotown Development Plan are proposed to be undertaken in three phases.

- *Phase One (Preliminary Vision, Principles and Land Use Framework and Community Input: May - August 2016):* This phase involves the development of a preliminary vision, principles, and a land use framework for the draft Metrotown Development Plan, as outlined in this report. Staff will then undertake a public input process to receive input towards the development of a draft Metrotown Development Plan.
- *Phase Two (draft Metrotown Development Plan: September/October 2016):* Building on the feedback received during the public input process, this phase involves the development of the draft Metrotown Development Plan, which will include detailed direction on land use, density, and urban design. The Plan will also express how the proposed land use framework meets the established policy objectives for public realm

To: City Manager
 From: Director Planning and Building
 Re: Metrotown Development Plan Update
 2016 May 04 Page 21

and open spaces; transportation improvements and mobility; sustainability; and community amenities. Staff would seek Planning and Development Committee and Council endorsement of the draft Metrotown Development Plan prior to commencing a second public input process using a similar approach as Phase One.

- *Phase Three (Metrotown Development Plan Adoption: November/December 2016):* This phase involves finalizing the Plan and the advancement of a Planning and Development Committee Report to Council to seek the adoption of the updated Metrotown Development Plan.

9.0 CONCLUSION AND RECOMMENDATIONS

The adopted 1977 Metrotown Development Plan has guided the transformation of Metrotown into a Regional City Centre that provides a broad range of housing types, employment options, community amenities, and social activities. The proposed preliminary vision, principles, and land use framework for the Metrotown Development Plan update presented in this report are intended to build upon the foundation established by the 1977 Plan, to further support the vision of creating a complete downtown over time. The aim is to create a downtown that serves all Burnaby residents, employees and visitors, making Metrotown a city-wide and regional destination.

Moving forward, the goal of the Metrotown Development Plan update is to foster the necessary services, amenities, transportation options, employment and residential capacity to enable Burnaby to grow and prosper over the next fifty years. A cornerstone of the Plan's success will be its focus on achieving a superior public realm with a fine-grained system of open spaces and streets, as well as the provision of supporting community benefits and amenities, including a major performance/event centre for all residents to enjoy.

It is recommended that Council endorse the preliminary vision, principles, and land use framework for a Metrotown Development Plan update, as a basis for receiving public input. It is also recommended that Council authorize staff to undertake a public input process on the preliminary vision, principles, and land use framework for the update of the Metrotown Development Plan. Results of the public consultation process would be the subject of a future report to Council.



Lou Pelletier, Director
 PLANNING AND BUILDING

JD/EK/RSC:tn

cc: Deputy City Manager
 Director Finance
 Fire Chief
 Chief Librarian
 City Clerk

Director Engineering
 Director Parks, Recreation and Cultural Services
 O.I.C. RCMP
 City Solicitor