

TRAFFIC SAFETY COMMITTEE

*HIS WORSHIP, THE MAYOR
AND COUNCILLORS*

**SUBJECT: GLENWOOD ELEMENTARY SCHOOL - MARINE DRIVE AT GILLEY
AVENUE**

RECOMMENDATIONS:

1. THAT Council approve the installation of a permanent concrete curb bulge at the southwest corner of Marine Drive at Gilley Avenue, as outlined in this report.
2. THAT a copy of this report be sent to Glenwood Elementary School Principal and Parent Advisory Committee (PAC) for information.

REPORT

The Traffic Safety Committee, at its meeting held on 2013 April 02, received and adopted the *attached* report responding to a request for safety improvements adjacent to Glenwood Elementary School.

A review of the concerns raised by Glenwood Elementary School PAC has been completed and some changes to school signs have been made. Continuing traffic speed enforcement and monitoring by the RCMP can be provided as necessary. It is recommended that the existing temporary curb bulge at the southwest corner of Marine Drive and Gilley Avenue be made permanent to enhance the pedestrian crossing conditions.

Respectfully submitted,

Councillor S. Dhaliwal
Chair

Councillor A. Kang
Vice Chair

Councillor P. Calendino
Member

Copied to:	City Manager Acting Director Engineering OIC, RCMP
------------	--

TO: CHAIR AND MEMBERS
TRAFFIC SAFETY COMMITTEE

DATE: 2013 March 26

FROM: ACTING DIRECTOR ENGINEERING

FILE: 38000 20
Ref: Traffic Safety

SUBJECT: GLENWOOD ELEMENTARY SCHOOL - MARINE DRIVE AT GILLEY AVENUE

PURPOSE: To respond to a request for safety improvements adjacent to Glenwood Elementary School.

RECOMMENDATIONS:

1. **THAT** the Committee recommend to Council the installation of a permanent concrete curb bulge at the southwest corner of Marine Drive at Gilley Avenue as outlined in this report.
2. **THAT** a copy of this report be sent to Glenwood Elementary School Principal and Parent Advisory Committee (PAC) for information.

REPORT**1.0 BACKGROUND**

At the Traffic Safety Committee meeting of 2012 November 06, a petition was received from Glenwood Elementary School PAC, and several letters from concerned parents. Concerns were raised regarding vehicles speeding within the school zone, the inadequate number of school zone signs, and pedestrian safety at the intersection of Marine Drive and Gilley Avenue which is currently controlled by three-way stop signs. A pedestrian signal at Marine Drive and Gilley was also requested.

2.0 REVIEW

A review of all school zone signs surrounding Glenwood Elementary was completed prior to receiving the petition. This resulted in the replacement of a missing advance school zone sign for westbound traffic on Marine Drive near Gilley Avenue in 2012 October. Also, a supplementary oversized school zone sign was reinstalled along Marine Drive as part of the City's ongoing annual program to remind drivers to slow down and watch for children at schools throughout Burnaby. All other signs were found to be in conformance with national guidelines and City practices including visible speed limit signs.

To: Traffic Safety Committee
From: Acting Director Engineering
Re: Glenwood Elementary School – Marine Drive and
Gilley Ave

2013 March 26 Page 2

An analysis of the crossing conditions at Marine and Gilley was also completed and it was determined that a pedestrian signal was not warranted. In fact, a signalized intersection may increase concerns about speeding because vehicles would not be required to stop if they have a green light. The review did identify the desirability of replacing the temporary curb bulge with a permanent one at the southwest corner of the intersection (see Figure 1). A permanent curb bulge with appropriate signs and markings will better identify the pedestrian crossing area and increase sight lines for both motorists and pedestrians by eliminating the temporary concrete barriers that are now being used.

Several other suggestions from the PAC, such as raised crosswalks, were reviewed but not recommended because Marine Drive is classified as a Major Collector Street and because the intersection is already stop controlled. The request for tree pruning to increase the visibility of the school itself would need to be considered by the School District because the trees are located on school property.

Lastly, the RCMP has been responding to requests for speed enforcement and their community speed watch program has been used to monitor and remind motorists about the reduced speed limits adjacent to the school.

3.0 CONCLUSION

A review of the concerns raised by Glenwood Elementary School PAC has been completed and some changes to school signs have been made. Continuing traffic speed enforcement and monitoring by the RCMP can be provided as necessary. It is recommended that the existing temporary curb bulge at the southwest corner of Marine Drive and Gilley Avenue be made permanent to enhance the pedestrian crossing conditions. The work is estimated to cost \$11,000 and funding is available within the Traffic Management component of the 2013 Annual Capital Program.

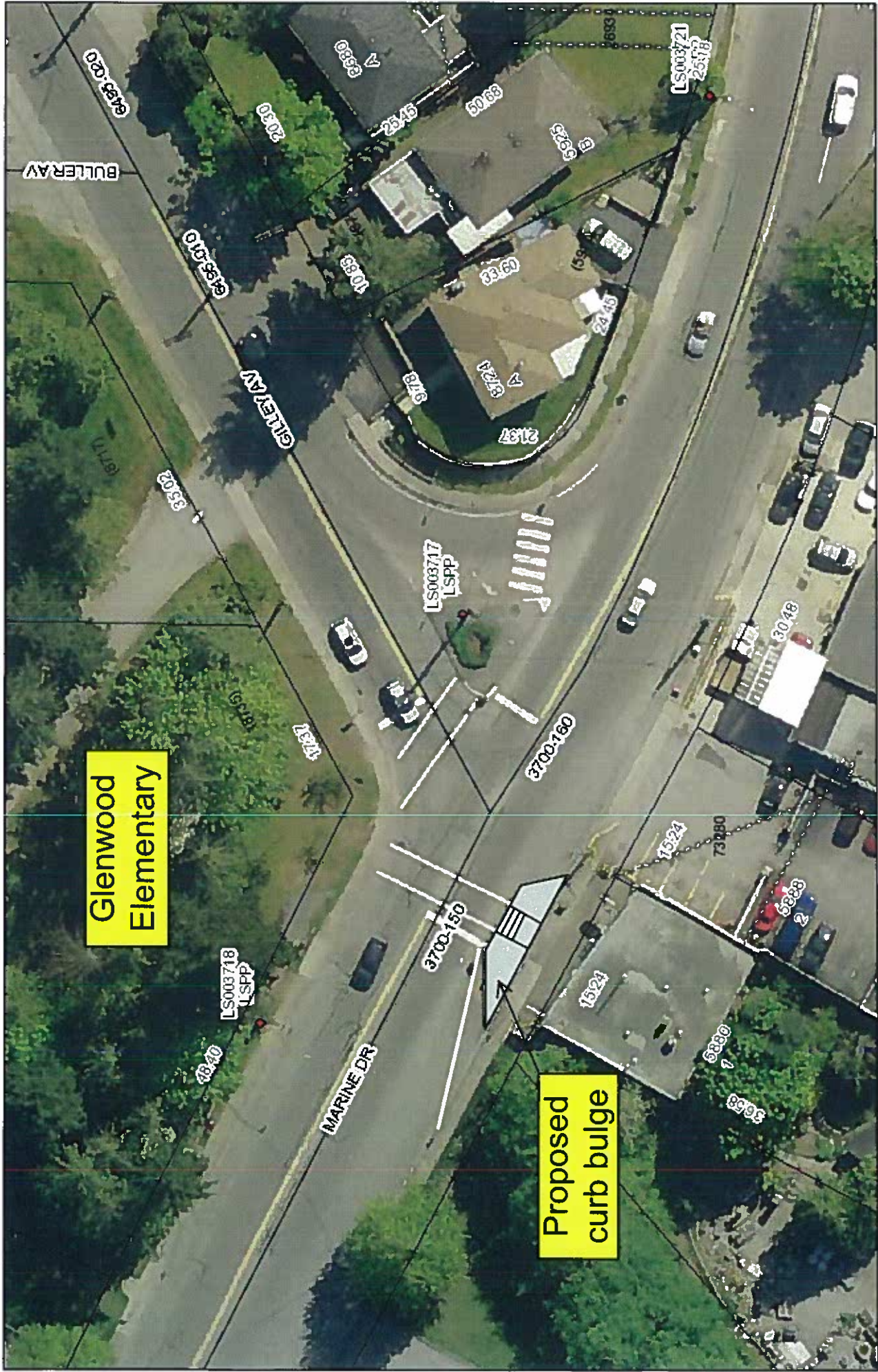
It is also recommended that a copy of this report be sent to Glenwood Elementary School Principal and Parent Advisory Committee (PAC) for information


B.C. Davis, P. Eng.
ACTING DIRECTOR ENGINEERING

EJ/DL/br

Attachment

Copied to: City Manager
RCMP – OIC Burnaby Detachment Chief Supt. Dave Critchley



The information has been gathered and assembled on the City of Burnaby's computer systems. Data provided herein is derived from a number of sources with varying levels of accuracy. The City of Burnaby disclaims all responsibility for the accuracy or completeness of information contained herein.

