



Item
Meeting 2012 May 28

COUNCIL REPORT

TO: CITY MANAGER **DATE:** 2012 May 17

FROM: DIRECTOR PARKS, RECREATION & CULTURAL SERVICES

**SUBJECT: BURNABY FRASER FORESHORE AND BURNABY HEIGHTS PARKS
- DOG OFF-LEASH FACILITIES**

PURPOSE: To request amendments to the Burnaby Animal Control Bylaw No.12289.

RECOMMENDATIONS:

1. **THAT** the Burnaby Animal Control Bylaw No.12289 be amended to reflect changes to the Burnaby Fraser Foreshore Park off-leash area and trail configuration, and the removal of the seasonal hours of operation restrictions as outlined in the attached report.
2. **THAT** the Burnaby Animal Control Bylaw No.12289 be amended to establish the off-leash enclosure at Burnaby Heights Park as outlined in the attached report.

REPORT

At its 'Open' Meeting of 2012 May 16, the Parks, Recreation and Culture Commission received the attached report and adopted the two recommendations contained therein.

A handwritten signature in black ink, appearing to read "D. Ellenwood".

Dave Ellenwood
DIRECTOR PARKS, RECREATION AND CULTURAL SERVICES

MC:tc

Attachment

P:\ADMIN\TC\DATA\COUNCIL\120516\PK - DOG OFF-LEASH FACILITIES

Copied to: City Solicitor
City Clerk
Chief Licence Inspector

TO: CHAIR AND MEMBERS
PARKS, RECREATION & CULTURE COMMISSION

FROM: DIRECTOR PARKS, RECREATION AND
CULTURAL SERVICES

SUBJECT: BURNABY FRASER FORESHORE AND BURNABY HEIGHTS PARKS
- DOG OFF-LEASH FACILITIES

RECOMMENDATIONS:

1. **THAT** Council be requested to amend Burnaby Animal Control Bylaw No.12289 to reflect changes to the Burnaby Fraser Foreshore Park off-leash area and trail configuration, and the removal of the seasonal hours of operation restrictions as outlined in this report.
2. **THAT** Council be requested to amend Burnaby Animal Control Bylaw No.12289 to establish the off-leash enclosure at Burnaby Heights Park as outlined in this report.

REPORT

As part of the ongoing implementation of the Commission approved 2007 Off-leash Dog Facility Strategy, amendments to the Animal Control Bylaw are required to establish new off leash facilities at designated sites within Burnaby's parks, or to amend physical changes to the boundaries of existing off-leash facilities as well as their hours of operation. This report updates Commission regarding the installation of the new off-leash enclosure at Burnaby Heights Park and outlines some necessary changes to the off-leash trail and open area at Burnaby Fraser Foreshore Park as a result of the dyke program and associated routing of the Urban Trail through the park.

Burnaby Fraser Foreshore Park Off-leash Facilities

The recent construction of a new dyke parallel to the Fraser River, and the associated alignment and development of sections of the Urban Trail at Burnaby Fraser Foreshore Park, has resulted in some unforeseen impacts that necessitate a realignment of the dog off-leash trail at two locations and a minor re-configuration of the off-leash area to reflect the alignment of the new dyke.

To: Parks, Recreation & Culture Commission
From: Director Parks, Recreation & Cultural Services
Re: BURNABY FRASER FORESHORE AND BURNABY
HEIGHTS PARKS - DOG OFF-LEASH FACILITIES
..... Page 2

The open grass area designated for off-leash dog activity at Burnaby Fraser Foreshore Park is located directly north of the group picnic grounds and sand volleyball courts. Because of the close proximity of these conflicting uses, seasonal restrictions on the hours of operation are in place for the dog off-leash open area. The current hours of operation are October 01 to April 30 - dawn to dusk, and May 01 to September 30 - dawn to 9:00 a.m. and 6:00 p.m. to dusk.

The alignment of the new dyke and Urban Trail to the north of the picnic grounds and sand volleyball courts, while reducing the size of the designated dog off-leash open area, now serves as an effective barrier between uses thus removing the necessity for the seasonal hours of operation restrictions. Council approval to amend the Animal Control Bylaw to reflect the new hours of use for the Burnaby Fraser Foreshore Park dog off-leash open area, Year Round – dawn to dusk, is therefore requested.

With the advent of the new dyke, came the opportunity to also develop a section of the proposed Urban Trail eastwards from Glen Lyon Parkway through the park upon the top of the dyke. Unfortunately, as a result of this trail construction, a section of the existing Byrne Creek west bank dyke dog off-leash trail has been upgraded to a paved 4 metre Urban Trail in order to provide a northbound link for pedestrians and cyclists wishing to head north via the Glen Lyon Parkway Urban Trail. The new trail use designation on this section of trail is incompatible with the existing off-leash trail use designation. The west bank dyke dog off-leash trail must therefore be shortened in length to exclude this upgraded section, and the entry point re-located to the new trail junction, located approximately 96 metres to the north.

Given the need for an amendment to the Animal Control Bylaw to incorporate this change, it is thought timely to also re-align the section of dog-off leash trail located north of North Fraser Way from the Byrne Creek west bank dyke to the east bank dyke. This is necessary to reflect a change in the proposed alignment of the Urban Trail along this section of Byrne Creek from the east bank dyke to the west bank dyke. This way the necessary revisions to the site orientation, directional, and regulatory signs for the Burnaby Fraser Foreshore dog off-leash facilities can be coordinated and installed on site at the same time.

It is therefore, requested that Council amend Animal Control Bylaw No. 12289 to reflect the changes to the configuration and alignment of the dog off-leash open area and off-leash trail and operating hours for the Burnaby Fraser Foreshore Park off-leash facilities, as shown in the attached revised Schedules #3 and #5 (Attachment #1).

Burnaby Heights Park Off-leash Facility

In 2007, Burnaby Heights Park was approved as the site for a dog off-leash facility to serve Northwest Burnaby. The location of the dog off-leash facility within the park and its form as a fenced enclosure, were chosen in consultation with the community as part of the public consultation process for the Burnaby Heights Park master plan. The layout of the dog off-leash enclosure has since been refined to incorporate service access and operational needs relating to the Metro Vancouver underground valve chambers located at the site.

To: Parks, Recreation & Culture Commission
From: Director Parks, Recreation & Cultural Services
Re: BURNABY FRASER FORESHORE AND BURNABY
HEIGHTS PARKS - DOG OFF-LEASH FACILITIES
..... Page 3

The installation of the off-leash facility was scheduled to take place upon completion of the Metro Vancouver valve chamber and water main installation. With the exception of site furnishings, natural play elements and some requested screening vegetation on the Ingleton Avenue frontage, the installation of the dog off-leash enclosure at Burnaby Heights is now complete and the facility is available for public use. It is therefore, requested that Council amend Animal Control Bylaw No. 12289 to establish the Burnaby Heights Park off-leash facility, as shown in the attached new Schedule #11 (Attachment #2).



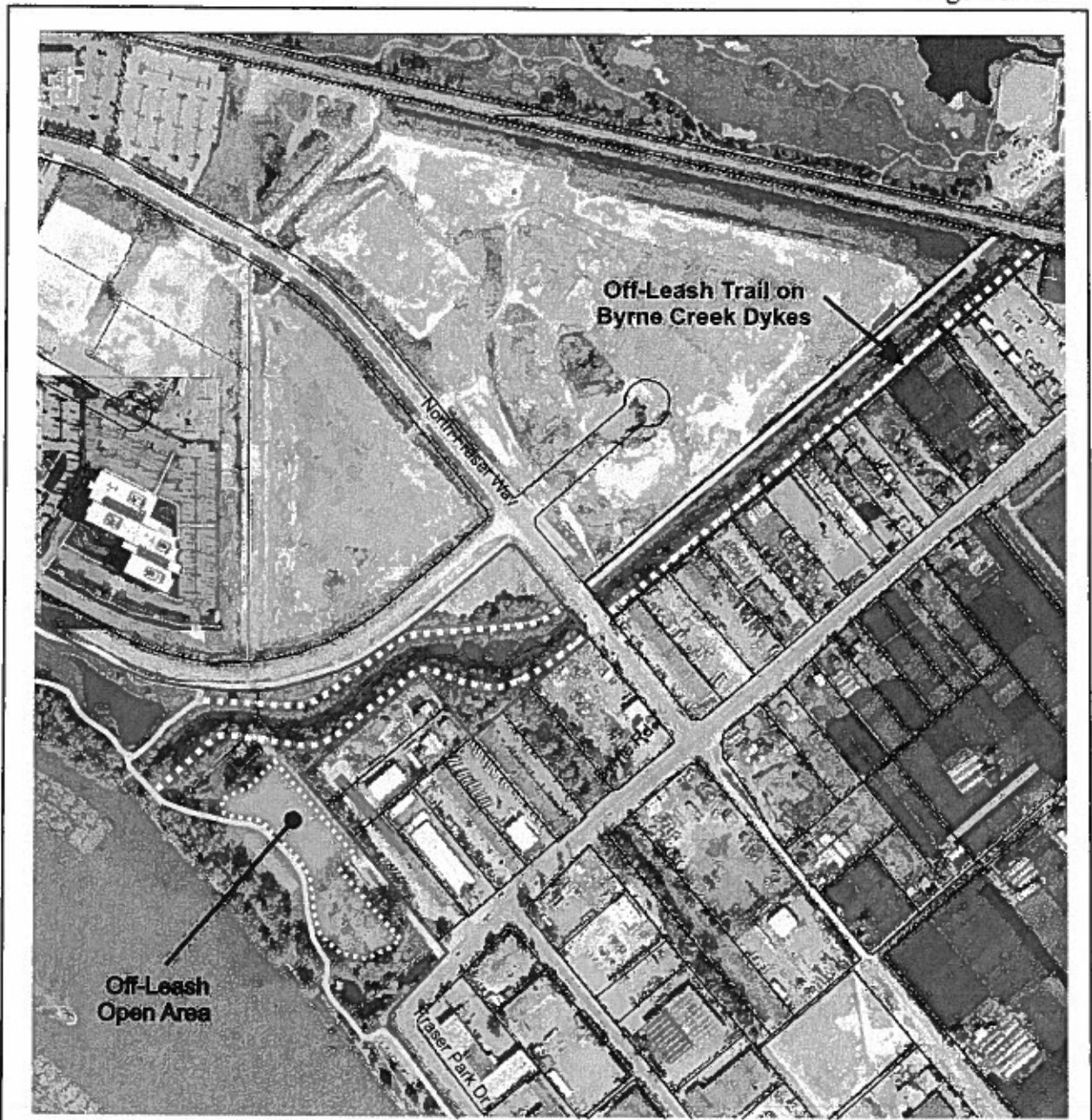
Dave Ellenwood
DIRECTOR PARKS, RECREATION AND CULTURAL SERVICES

ATS:ats:tc

Attachments

p:\admin\tc\as\bby fraser foreshore & bby heights parks – dog off-leash facilities

cc: City Solicitor
City Clerk
Chief Licence Inspector



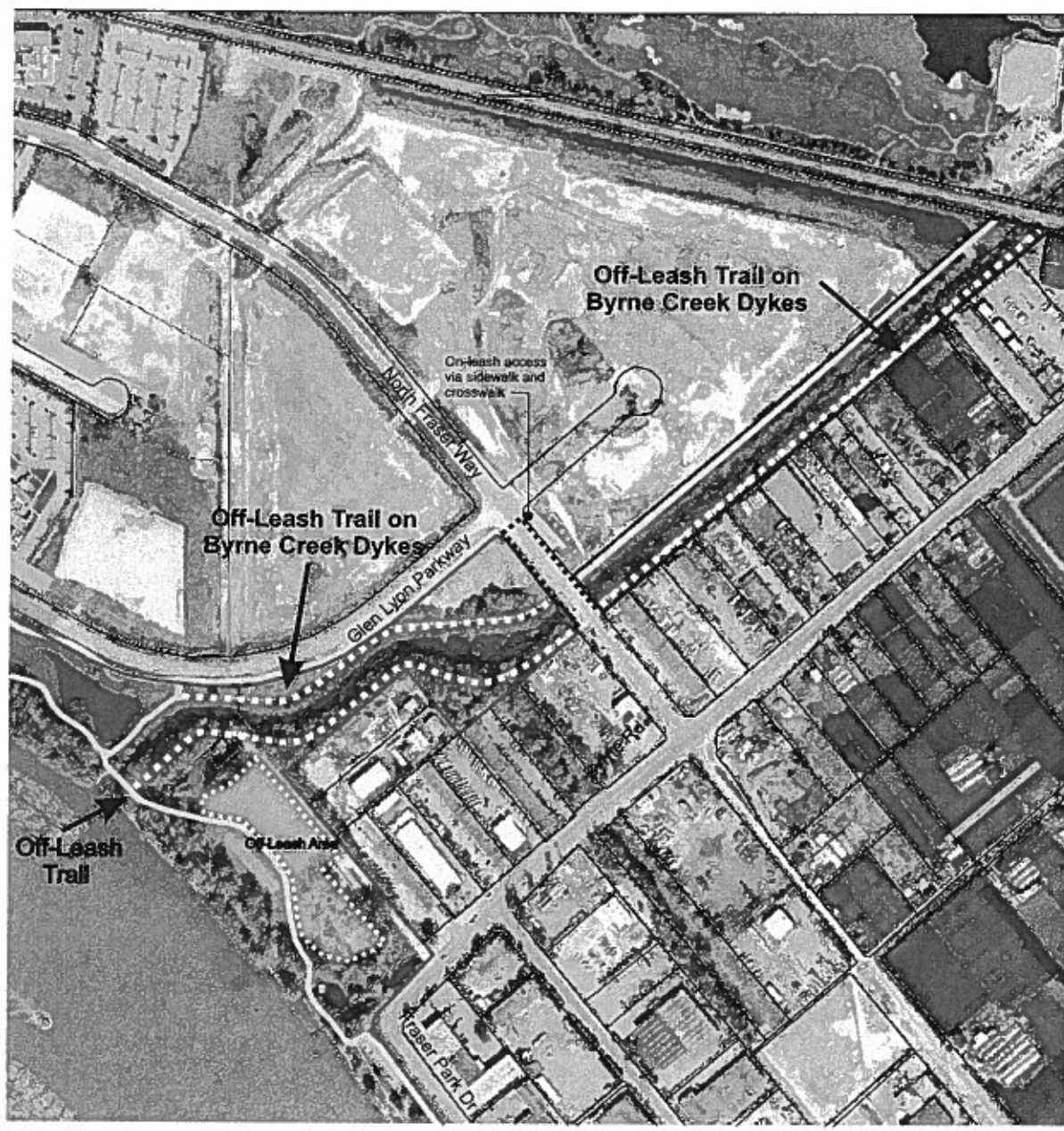
Schedule #3

North



**Burnaby Fraser Foreshore Park:
Off-leash Open Area**

Date: May 2012
Scale: nts
Prepared By: ATS

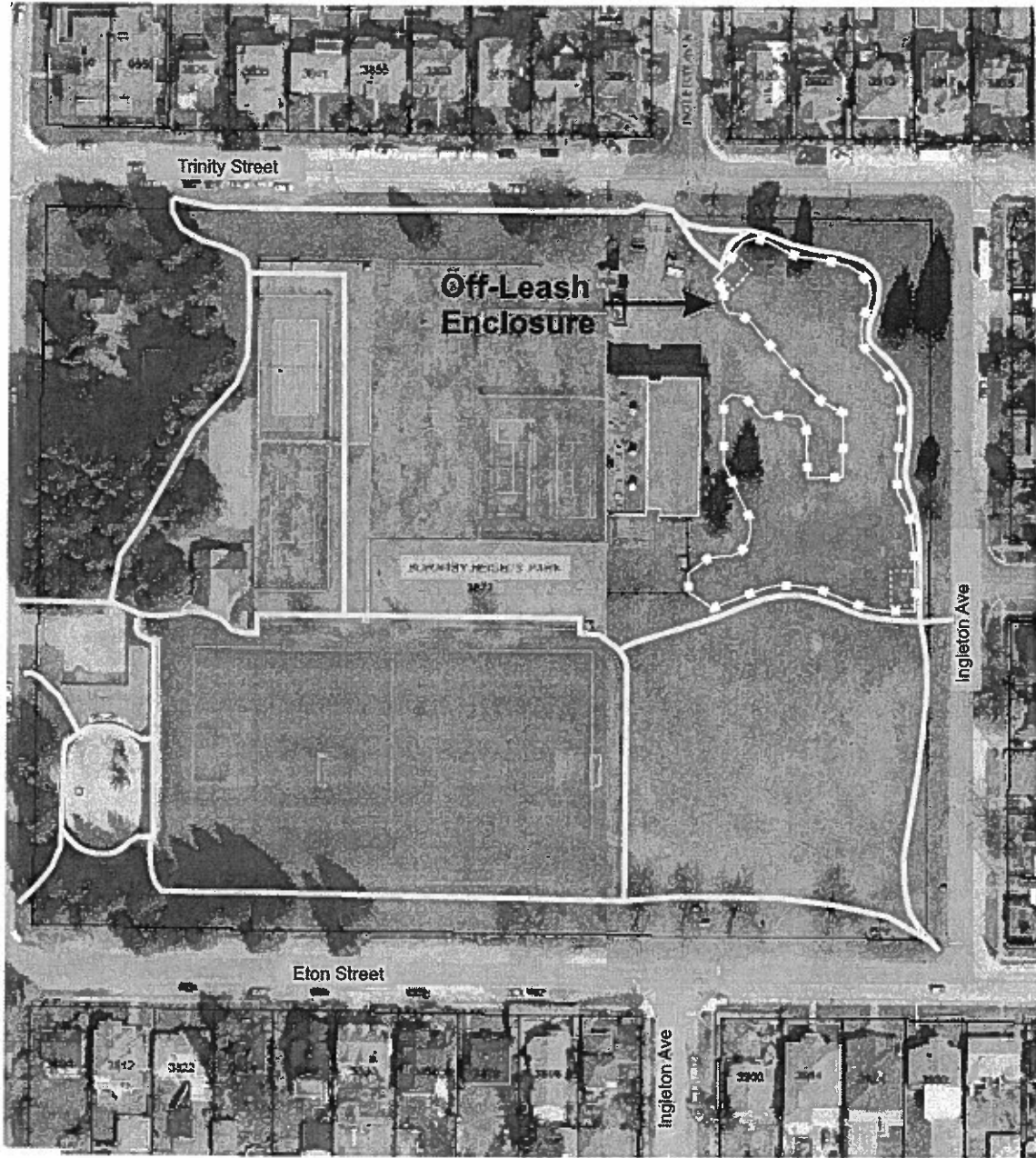


Schedule #5



**Burnaby Fraser Foreshore Park:
Off-leash Trail
on Byrne Creek Dykes**

Date: May 2012
Scale: nts
Prepared By: ATS



Schedule #11



*Burnaby Heights Park:
Off-Leash Enclosure*

Date: May 2012
Scale: nts
Prepared By: ATS