



TRAFFIC SAFETY COMMITTEE

*HIS WORSHIP, THE MAYOR
AND COUNCILLORS*

**SUBJECT: DEPARTURE HUBS/PARK AND RIDE FACILITIES IN BURNABY FOR
THE 2010 OLYMPIC WINTER GAMES**

RECOMMENDATION:

1. THAT Council receive this report for information purposes and staff be requested to update the Committee and Council on VANOC's traffic management plans as appropriate.

REPORT

The Traffic Safety Committee, at its meeting held on 2009 September 08, received and adopted the *attached* report providing information regarding departure hubs/park and ride facilities within the City of Burnaby for the 2010 Olympic Winter Games.

Burnaby will continue to work with VANOC to coordinate travel needs within the City and to ensure traffic impacts to local residents and businesses are minimized.

Respectfully submitted,

Councillor S. Dhaliwal
Chair

Councillor C. Jordan
Vice Chair

Councillor P. McDonell
Member

Copied to: City Manager
RCMP – OIC, Supt Rick Taylor
Director Engineering

TO: CHAIR AND MEMBERS
TRAFFIC SAFETY COMMITTEE **DATE:** 2009 September 01

FROM: DIRECTOR ENGINEERING **FILE:** 38000 40
Ref: Special Events

**SUBJECT: DEPARTURE HUBS/PARK AND RIDE FACILITIES IN BURNABY FOR
THE 2010 OLYMPIC WINTER GAMES**

PURPOSE: To provide information regarding departure hubs/park and ride facilities within
the City of Burnaby for the 2010 Olympic Winter Games

RECOMMENDATION:

1. **THAT** the Committee forward this report to Council for information purposes and staff be requested to update the Committee and Council on VANOC's traffic management plans as appropriate.

REPORT**1.0 BACKGROUND**

The 2010 Olympic and Paralympic Winter Games will take place in Metro Vancouver and the Sea to Sky regions between February 12-28 and between March 12-21. In this time period there will be increased use of the transportation network due to the large number of visitors and athletes attending the games. As well, road capacity will be decreased in Vancouver due to reallocations or closures for security or operational needs. In response, the Olympic and Paralympic Transportation Team (VANOC, City of Vancouver, Resort Municipality of Whistler, TransLink, BC Transit, Ministry of Transportation and Infrastructure and the Vancouver 2010 Integrated Security Unit) has developed an integrated transportation plan that includes increasing public transit capacity in Metro Vancouver and decreasing local vehicle traffic wherever possible. About 80% of the planning is complete and further details are being finalized.

VANOC representatives have been in contact with City staff to discuss the Games travel routes through Burnaby. In Burnaby, the direct traffic impacts from the Winter Games will be more limited, with the exception of the park-and-ride facilities planned at SFU and BCIT during the Olympic Games. In general, there will likely be an overall increase in traffic in Burnaby and there may be some increased parking pressures surrounding transit stations. No spectator parking is being provided at any of the venues in Vancouver; however, event tickets also serve as transit passes for the day of the event. Staff will monitor and be prepared to address these issues as they arise to ensure residents and businesses are not unduly impacted.

To: Traffic Safety Committee
From: Director Engineering
Re: DEPARTURE HUBS/PARK AND RIDE FACILITIES IN BURNABY FOR THE 2010
OLYMPIC WINTER GAMES
2009 September 01 Page 2

2.0 DEPARTURE HUBS/PARK AND RIDE FACILITIES IN BURNABY

As part of the integrated transportation plan, an Olympic Bus Network is being planned to transport Games workers and ticket holders between departure hub locations throughout Metro Vancouver to and from Whistler and Cypress Mountain. This addresses the transportation challenge of efficiently moving people in the region and along the Sea to Sky Corridor in particular. Five Departure Hubs or park-and-ride facilities are proposed. These are shown on Figure 1, with two located within Burnaby at SFU and at BCIT. VANOC is continuing to work closely with both institutions to finalize details, including the management of the bus fleet and operation of the departure hubs. The departure hub location within both campuses is shown on Figures 2 and 3.

The departure hub operation at SFU is wholly within the SFU campus. However, Burnaby has statutory right-of-way along many of those roads that are within the travel route plan. Therefore, where street closures or significant restrictions are contemplated, approval from Burnaby will be required. The SFU departure hub facility will be used to transport Games workers and ticket holders to the Cypress Mountain venue.

The departure hub operation at BCIT is also largely on BCIT property. VANOC has requested the use of the curb lanes on both the east and west side of Wayburne Dr between Canada Way and Deer Lake Pkwy for bus staging. Their request can be accommodated subject to detailed review to minimize impact to neighbouring residents and surrounding streets. VANOC will be required to obtain authorization from Burnaby for a lane closure similar to other contractors requiring dedicated access to Burnaby streets, and will be required to reimburse any City costs incurred for their dedicated use. The BCIT departure hub will be used to transport Games workers and ticket holders to the Whistler Olympic Park and The Whistler Sliding Centre.

Mitigating the increased traffic from the departure hub operations at SFU and BCIT is the cancellation of classes at both facilities during the Olympic Games. Due to the potential of some inconveniences to adjoining land uses resulting from the departure hub facilities, staff have requested VANOC to conduct public engagement near both facilities within the next two months. This will help keep the neighbourhood informed and will allow VANOC to hear and respond to any questions or concerns. Under the public engagement plan, VANOC will work with businesses, residents, and organizations to share information and identify potential impacts that may result from the operation of the competition and non-competition venues. The following communication methods will be used:

- Letters/information bulletins to residents
- Dedicated phone line to reach VANOC representatives (604-403-2309)
- Email address (info@vancouver2010.com)
- Dedicated section on the Vancouver2010.com website for local businesses, residents, and organizations
- Electronic newsletter

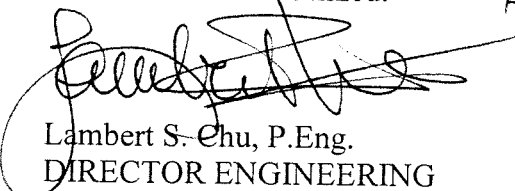
To: Traffic Safety Committee
From: Director Engineering
Re: DEPARTURE HUBS/PARK AND RIDE FACILITIES IN BURNABY FOR THE 2010
OLYMPIC WINTER GAMES
2009 September 01 Page 3

3.0 OTHER RELATED ACTIVITIES

A temporary bus depot is being established in Vancouver at the southwest corner of Boundary and Kent Ave E, south of Marine Way. This bus depot will accommodate up to 1,000 buses. The majority of the buses will be servicing the five departure hub facilities, but there will also be buses servicing other facilities such as sponsor and media accommodations. Due to competition schedules and workforce requirements, the bus depot can be expected to be in operation very early in the morning to late at night. The routing of all buses between the bus depot and the SFU and BCIT departure hub facilities will be along major arterial streets. Staff will be reviewing the specific routes to ensure they are appropriate. Because of the size of the operation at the bus depot at Boundary and Kent Ave E, VANOC will also undertake public engagement with adjacent residents and businesses.

4.0 CONCLUSION

VANOC has been consulting with City staff on their activities, particularly the SFU and BCIT departure hub facilities. This report provides information to Council about some of the activities planned by VANOC within the City of Burnaby. Staff will continue to review their plans and assess their impacts as more details become available. Requests for lane or street closures will be evaluated according to City policies and practices. VANOC will undertake public engagement with residents and businesses adjacent to the departure hub facilities at SFU and BCIT, and near the bus depot at Boundary and Kent Ave E. This will ensure that nearby residents and businesses are kept informed and provided an opportunity to ask questions or express any concerns. The public engagement is expected to provide some form of directed communication (as opposed to general public notification or advertising) to residents and businesses in close proximity to the facilities. Staff will continue to work with VANOC to coordinate travel needs within the City and to ensure traffic impacts to local residents and businesses are minimized.



Lambert S. Chu, P.Eng.
DIRECTOR ENGINEERING

DL/br

Enclosures
Copied to: City Manager
RCMP – OIC Burnaby Detachment Supt Rick Taylor

Figure 1
Departure Hubs

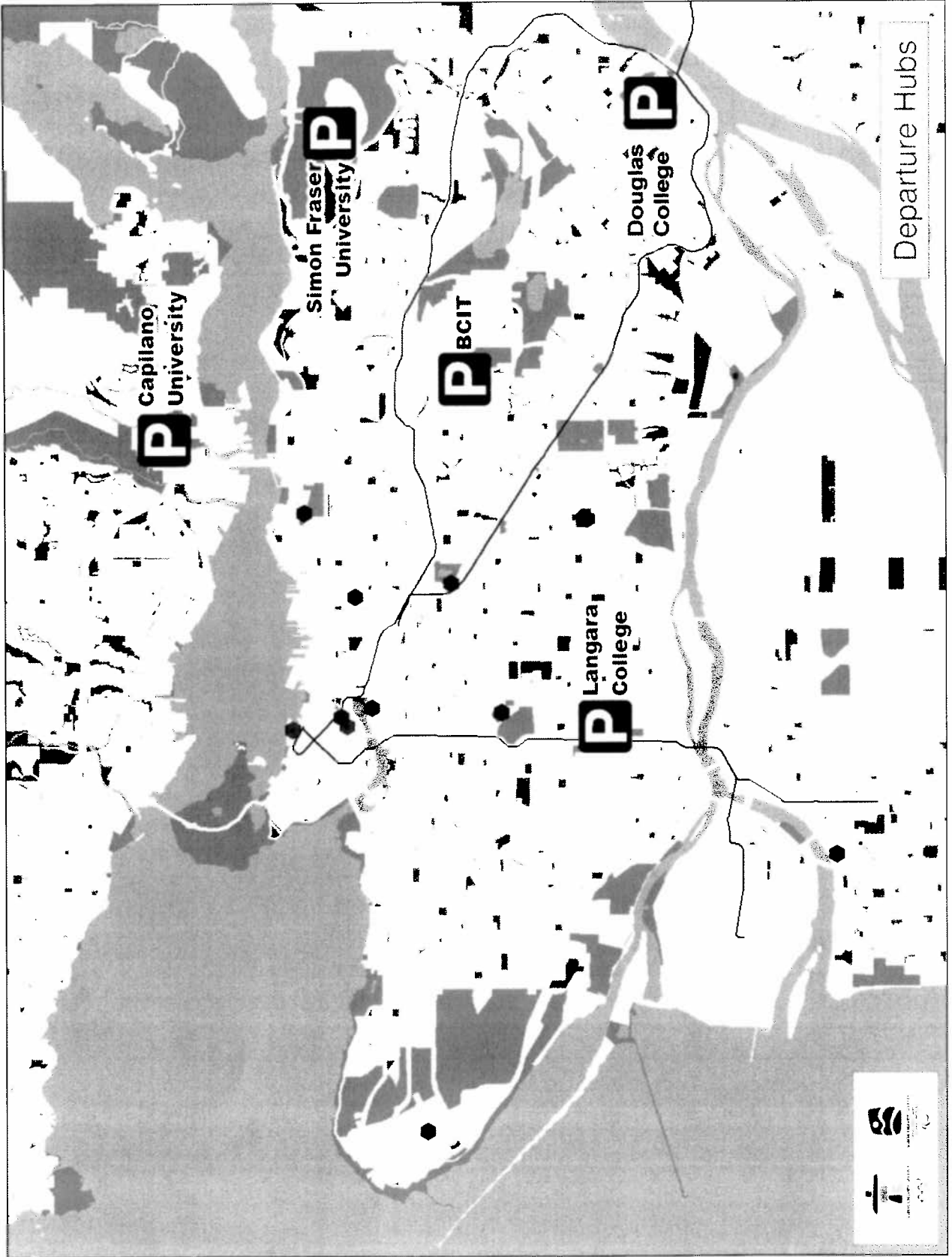


Figure 2
Departure Hub at SFU

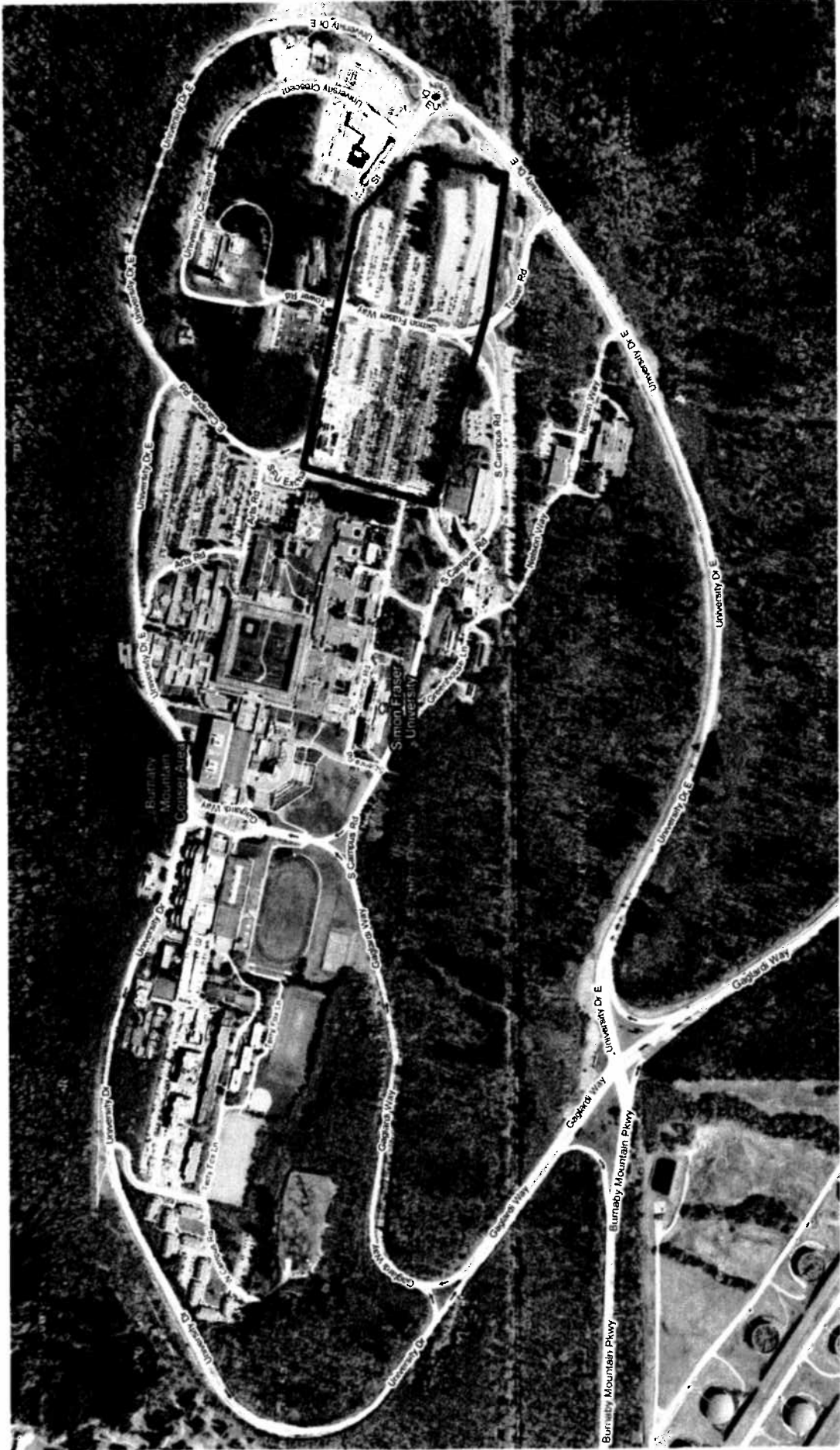


Figure 3
Departure Hub at BCIT

