



Item.....
Meeting.....2009 May 11

TO: CITY MANAGER **DATE:** 2009 May 06

FROM: DIRECTOR PLANNING AND BUILDING **FILE:** 87000 20

Reference: Sub #26/91

**SUBJECT: RATHBURN DRIVE SERVICING
SUBDIVISION REFERENCE #26/91**

PURPOSE: To seek Council expenditure authorization for completion of subdivision servicing works on Rathburn Drive.

RECOMMENDATION:

1. **THAT** Council authorize an expenditure not to exceed \$40,000 for the completion of subdivision servicing works on Rathburn Drive, as outlined in this report.

REPORT

On 1992 May 19, Council authorized capital expenditures under the Land Assembly and Development Program for the servicing of City residential lots (formerly addressed at 9869, 9887 and 9949 Broadway) with the construction of the abutting Rathburn Drive (See Figure 1, *attached*). Through the subdivision and related servicing, the City achieved the creation of five residential lots which were subsequently sold for single-family development.

The approved City expenditures for the subdivision works completed to date total \$219,395. Remaining servicing works for the subdivision include repair of portions of the previously installed road asphalt and installation of the final lift of asphalt. The Director Engineering has advised that the final cost estimate for this component of the servicing work is \$40,000, inclusive of engineering design, contingency and GST.

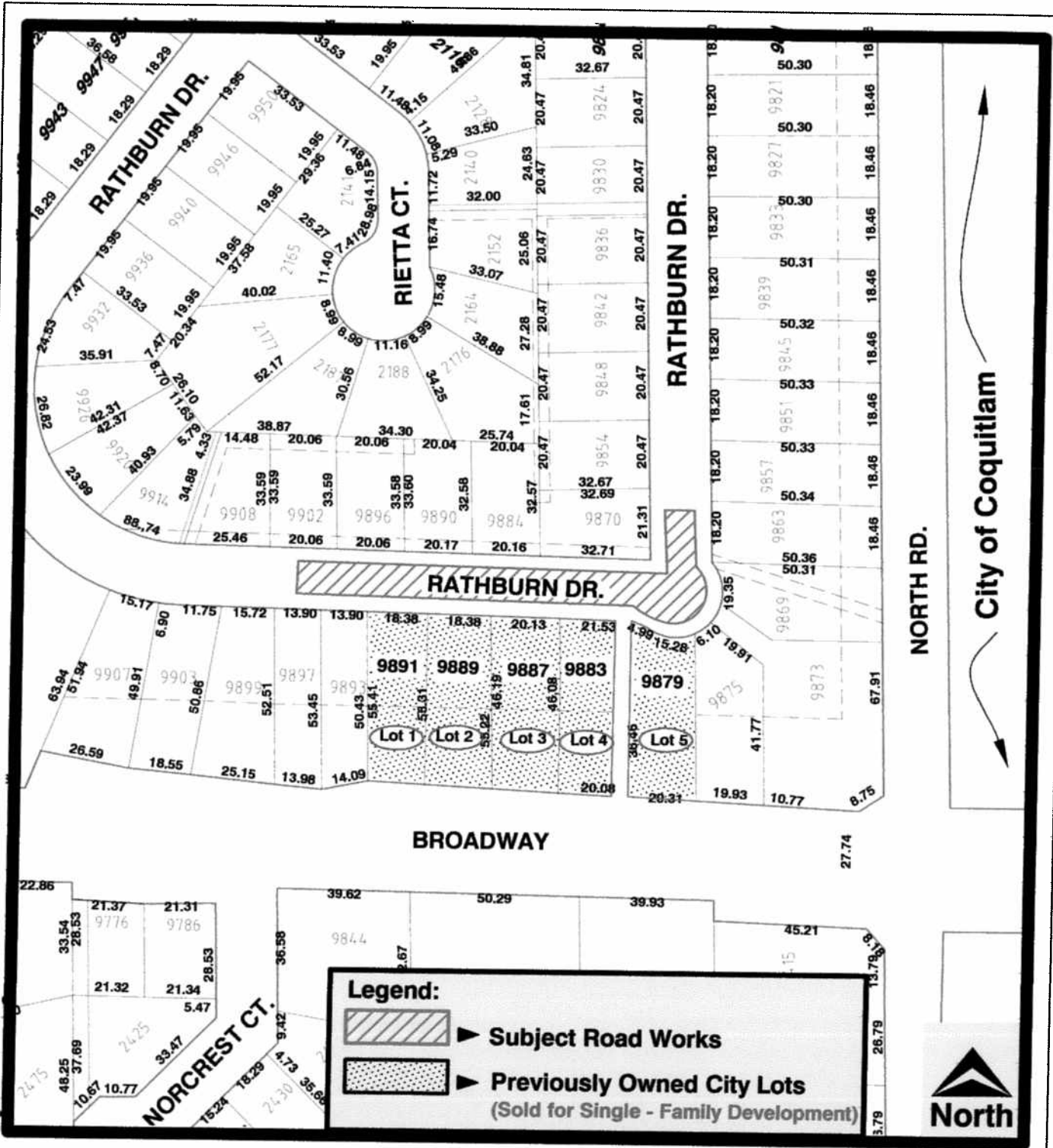
Sufficient capital reserves are available for this expenditure, and an allocation for this project is provided for within the approved 2009-2014 Annual Capital Program under the Land Assembly and Development – Miscellaneous Servicing and Upgrading component. It is recommended that Council authorize an expenditure not to exceed \$40,000 for the completion of the subject subdivision servicing works.



B. Luksun
DIRECTOR PLANNING AND BUILDING

SMN:gk
Attachment

cc: Director Finance
Director Engineering



Planning and Building Department

Scale: 1 = 3000

Drawn By: J.P.C.

Date: May 2009

**Rathburn Drive Servicing
Subdivision Reference #26 - 91**

Sketch # 1