
COMMUNITY HERITAGE COMMISSION

*HIS WORSHIP, THE MAYOR
AND COUNCILLORS*

SUBJECT: CENTRAL PARK ENTRANCE GATE

RECOMMENDATIONS:

1. THAT Council approve expenditure not to exceed \$10,000 (inclusive of 5% GST) towards preparing a conservation plan for the Central Park Entrance Gate, as outlined in this report.
2. THAT Council approve a Heritage Alteration Permit for Metro Vancouver to undertake the dismantling of the “wing wall” section of the Central Park Entrance Gate wall, as outlined in this report.
3. THAT a copy of this report be advanced to the Parks, Recreation and Culture Commission for their information.

REPORT

The Community Heritage Commission, at its meeting held on 2008 October 21, received and adopted the *attached* report seeking funding approval for preparation of a conservation plan for the Central Park Entrance Gate and for issuance of a Heritage Alteration Permit for works being advanced by Metro Vancouver.

Respectfully submitted,

Councillor G. Begin
Chair

Councillor C. Jordan
Vice Chair

Copied to:	City Manager Director Finance Director Planning & Building Director Parks, Recr. & Cult. Services City Solicitor Director Engineering
------------	--

TO: CHAIR AND MEMBERS
COMMUNITY HERITAGE COMMISSION

DATE: 2008 October 16

FROM: DIRECTOR PLANNING AND BUILDING

FILE: 77000 20
Reference: Central Park Entrance Gate

SUBJECT: CENTRAL PARK ENTRANCE GATE

PURPOSE: To seek funding approval for preparation of a conservation plan for the Central Park Entrance Gate and for issuance of a Heritage Alteration Permit for works being advanced by Metro Vancouver.

RECOMMENDATIONS:

1. **THAT** Council be requested to approve an expenditure not to exceed \$10,000 (inclusive of 5% GST) towards preparing a conservation plan for the Central Park Entrance Gate, as outlined in this report.
2. **THAT** Council be requested to approve a Heritage Alteration Permit for Metro Vancouver to undertake the dismantling of the “wing wall” section of the Central Park Entrance Gate wall, as outlined in this report.
3. **THAT** a copy of this report be advanced to the Parks, Recreation and Culture Commission for their information.

REPORT

1.0 INTRODUCTION

Burnaby's landmark Central Park Entrance Gate was constructed in 1913 as the main ornamental entrance to the park on Kingsway, adjacent to the Central Park Station on the old B.C. Electric Railway's interurban line. The structure was composed of twin cut stone and granite pillars spanned by an ornamental wrought-iron arch with an early illuminated electric sign for Central Park, and a low flanking cobblestone and granite wall built adjacent to the interurban line to define the platform for the Central Park Interurban Station (see *Attachments 1 & 2*).

The arch has been subject to a number of changes to its original design since its construction. In 1945, the initial road widening of Kingsway, from two to four lanes, resulted in the Entrance Gate being relocated south from its original location. The metal Central Park sign and arch were removed in 1968 due to corrosion of its structural elements and safety considerations.

To: Community Heritage Commission
From: Planning And Building
Re: Central Park Entrance Gate
2008 October 16..... Page 2

The Entrance Gate and its adjacent walls were designated as a protected heritage site by City Council through the adoption of a Municipal Heritage Designation Bylaw in 1992. As a designated and protected heritage site, any changes to the entrance gate and related elements require Council approval and authorization for issuance of a Heritage Alteration Permit.

This report seeks Council approval for the preparation of a conservation plan for the Central Park Entrance Gate, and for issuance of a Heritage Alteration Permit for works being advanced by Metro Vancouver for the GVWD Boundary Road Water Main No.5 project.

2.0 CENTRAL PARK ENTRANCE GATE

As noted above, the Central Park Entrance Gate was constructed in 1913 and was composed of twin cut stone and granite pillars spanned by an ornamental wrought-iron arch with an early illuminated electric sign for Central Park. Following the designation of the Entrance Gate as a civic heritage site in 1992 no conservation reports, significant maintenance or restoration work has been undertaken. Details of the major components of the Central Park Entrance Gate, their current condition and related conservation issues are outlined below.

2.1 Stone Pillars:

The twin cut-granite and cobble stone pillars of the original Central Park Entrance Gate remain in good condition fronting Kingsway. Minor mortar repair and stone cleaning will be required as part of the ongoing maintenance of this park heritage feature. The former wrought-iron arch connections remain imbedded in the masonry of the arch's top sections where they were cut in 1968. The pillars are currently located in the road right-of-way and are only separated from the main traffic lanes of Kingsway by a sidewalk width of a few feet, which add to the complexity of their conservation at this location. The future restoration of the arch component of the entrance gate would require a partial dismantling of the top section of the pillars to allow for its re-installation.

2.2 Stone Side Walls:

The cut-granite and cobble stone walls which flank the entrance gate are currently in fair condition. A lack of maintenance has resulted in both plants and soil obscuring much of the wall along its 55 metres which flank the BC Parkway/SkyTrain corridor. Significant new drainage, landscape and cleaning /re-pointing of the wall would be required elements of its conservation. A section of the west flanking wall has been removed in the past and could be replicated as part of the site's future restoration.

2.3 Stone Wing Wall:

A 10 metre section of cut-granite and cobble stone wall projects outwards from the stone side wall adjacent to the SkyTrain corridor area. This wall once demarked the former Central Park Interurban Station platform area. This section of the wall is in a ruined condition and will need complete reconstruction, which is currently proposed as part of the Metro Vancouver water main project, as outlined in this report. The original granite capstone is in good condition and will need temporary protection through its storage off-site. The original granite stone comprising the decorative elements of this wall section will also need to be relocated on site and stored pending its reconstruction.

2.4 Wrought Iron Arch:

In 1968 the highly ornamental wrought iron arch spanning the entrance gates pillars was removed due to its deterioration from metal corrosion. Much of the original Central Park electric sign of galvanized metal was lost during its removal and is no longer extant. A large portion of the original decorative wrought iron was salvaged and relocated for storage at Burnaby Village Museum. Significant sections of this metal arch exists which could be used to recreate or restore the lost arch and electric sign. However, the engineering, electrical requirements, conservation costs and site planning considerations associated with the restoration of this element of the Entrance Gate would be significant and require detailed study.

3.0 CONSERVATION PLAN

Staff are requesting funding approval to undertake a conservation plan for the Central Park Entrance Gate to establish a framework for its long term conservation and restoration. In addition to providing for a restoration plan to respond to the works proposed by Metro Vancouver, outlined in section 4.0, the conservation plan would also serve to inform planning and other reviews underway in the area of the Gate related to:

- long term design and configuration of the adjacent Kingsway road frontage
- the configuration of the existing and future driveway entrances to Central Park
- options for the location and access to public parking within the Park
- relationship to future Management Plans for the Park
- plans for upgrade of the BC Parkway through Central Park
- restoration and conservation works following proposed infrastructure upgrades

The Conservation Plan would undertake to:

- review the condition of the Entrance Gate and its components
- review options and costs for conserving and restoring components of the Entrance Gate
- review implications of the Entrance Gate either remaining in situ or being relocated on site
- recommend immediate to long-term conservation and restoration actions

It is anticipated that the Conservation study would result in a detailed conceptual plan for the restoration of the gate's arch and electric "Central Park" sign, including other improvements related to the pillars, side wall and wing wall components. The study would define estimated costs, and resolution of issues related to conservation of the Gate in its current or new location. Council approval for any recommended works would be sought through further reports advanced through the Commission.

The proposed study would also provide staff with the information required to inform various planning and other reviews being considered in the area of the Gate. The report would also guide any restoration works to be undertaken that would arise from the works proposed by Metro Vancouver, as discussed subsequently in this report.

Staff have completed an assessment of the funding necessary to have a heritage consultant undertake the scope of work as outlined above. Based on this assessment, it is proposed that Council be requested to approve an expenditure of Gaming funds for this project in the amount of \$10,000.00 inclusive of 5% GST. A sufficient capital allocation for this project is available in the 2009-2013 Annual Capital

To: Community Heritage Commission
From: Planning And Building
Re: Central Park Entrance Gate
2008 October 16..... Page 4

Program. The use of Gaming funds for this project is consistent with Council guidelines to support heritage, cultural and environmental projects.

4.0 HERITAGE ALTERATION PERMIT

4.1 Metro Vancouver GVWD Boundary Road Water Main No. 5 Project

In 2008, the City of Burnaby purchased a section of former railway land from B.C. Hydro parallel to the B.C. Parkway and SkyTrain as part of its parkland acquisition program. This agreement included the provision for the City to negotiate a Memorandum of Understanding for a statutory right-of-way over the subject property to permit the construction of the GVWD Boundary Road Water Main No. 5 project by Metro Vancouver.

The water main construction project will impact the small “wing wall” section of the designated Central Park Entrance Gate. Currently, this section of wall is in very poor ruined condition as most of the original mortared stonework has deteriorated and has failed. A large carved granite cap stone is in good condition and forms an important and valuable original and decorative component of this heritage feature.

Given the ruined condition of the “wing wall” section of the entrance gate it is proposed that Metro Vancouver be granted a Heritage Alteration Permit by Council authority to dismantle this section of wall in order that the approved water main may be constructed. As part of the Memorandum of Understanding with Metro Vancouver it has been agreed that the landscape restoration plan will make provision for the restoration of the “wing wall” section of the Central Park Entrance Gate in its original location. Under the direction of the Community Heritage Commission a new conservation plan will be developed for the Central Park Entrance Gate that will provide for the reconstruction of the “wing wall” section utilizing the salvaged cap stone and granite stonework. The specific conservation work for the “wing wall” will be directed by City staff. This work would be coordinated as part of the overall conservation plan for the Central Park Entrance Gate.

4.2 Heritage Alteration Permit

As the Central Park Entrance Gate is a designated heritage site which is protected by bylaw, design changes require Council approval and authorization of a Heritage Alteration Permit (HAP). As the small “wing wall” section of the Central Park Entrance Gate is proposed to be dismantled and stored as part of the water main construction project, approval of this work is required. As such, Council authorization of a HAP is sought for the dismantling of the small section of wall. The conservation and restoration of the Central Park Entrance Gate and reconstruction of the “wing wall” will be subject to a future report to Council following the outcome of the proposed Conservation Study. Approval of the recommendation of this report will form the required Heritage Alteration Permit.

Metro Vancouver has agreed as part of the Memorandum of Understanding and the proposed Heritage Alteration Permit to take all necessary steps to protect the designated heritage structure known as the Central Park Entrance Gate and undertake the following work items:

- Coordinate the removal of the decorative granite capstone from the “wing wall” section and its delivery to a designated City of Burnaby storage facility.

To: Community Heritage Commission
From: Planning And Building
Re: Central Park Entrance Gate
2008 October 16..... Page 5

- Dismantle the cobblestone and granite of the “wing wall” section and pile this stone in an agreed location onsite for future use in reconstruction.
- Provide protective fencing for the stone pile and remaining Central Park Entrance Gate wall adjacent to the construction site.
- Incorporate the reconstruction of the “wing wall” following the completion of construction as part of the approved landscape plan.

5.0 NEXT STEPS

The Central Park Entrance Gate forms a significant city-owned heritage landmark within Metrotown as one of the major entrances to historic Central Park. With Council authorization, staff would proceed to immediately undertake the monitoring of the water main construction works associated with the Heritage Alteration Permit, in cooperation with Metro Vancouver, to ensure the protection of the wing wall component of the Entrance Arch. Staff will also undertake the completion of a comprehensive Conservation Plan for the Central Park Entrance Gate with the guidance of the Community Heritage Commission. On completion of the Conservation Plan, a further report would be prepared for the Commission and Council to outline the results and findings and establish future program of conservation actions.


B. Luksun, Director
PLANNING AND BUILDING

JW:sa

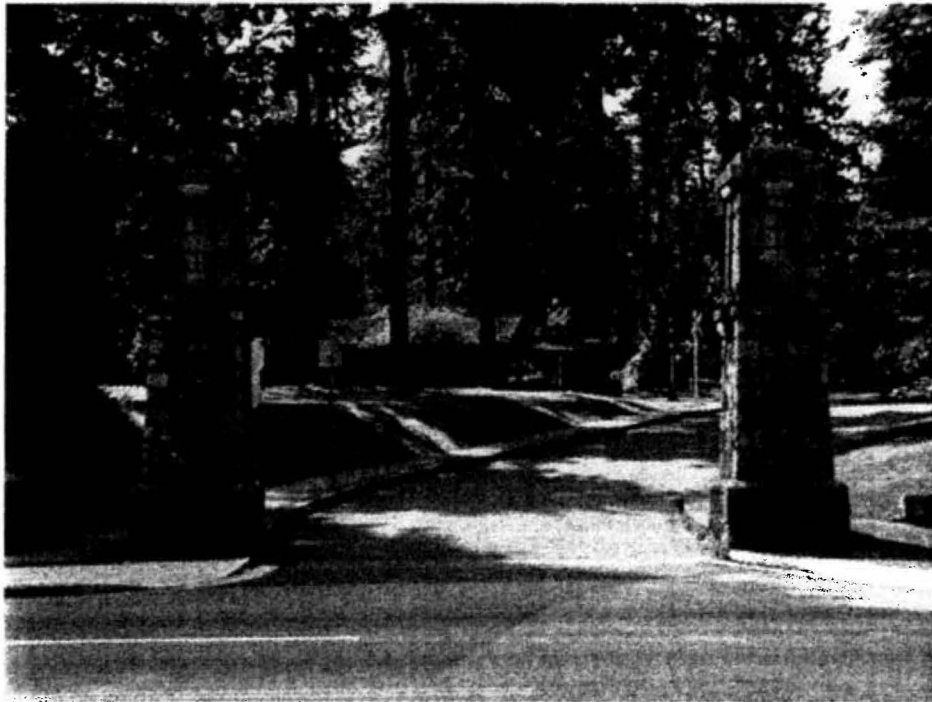
Attachments (2)

Copied to: City Manager
Director Engineering
Director Parks, Recreation & Cultural Services
City Clerk
City Solicitor
Director Finance

P:\Jim\Central Park Entrance Gate.doc

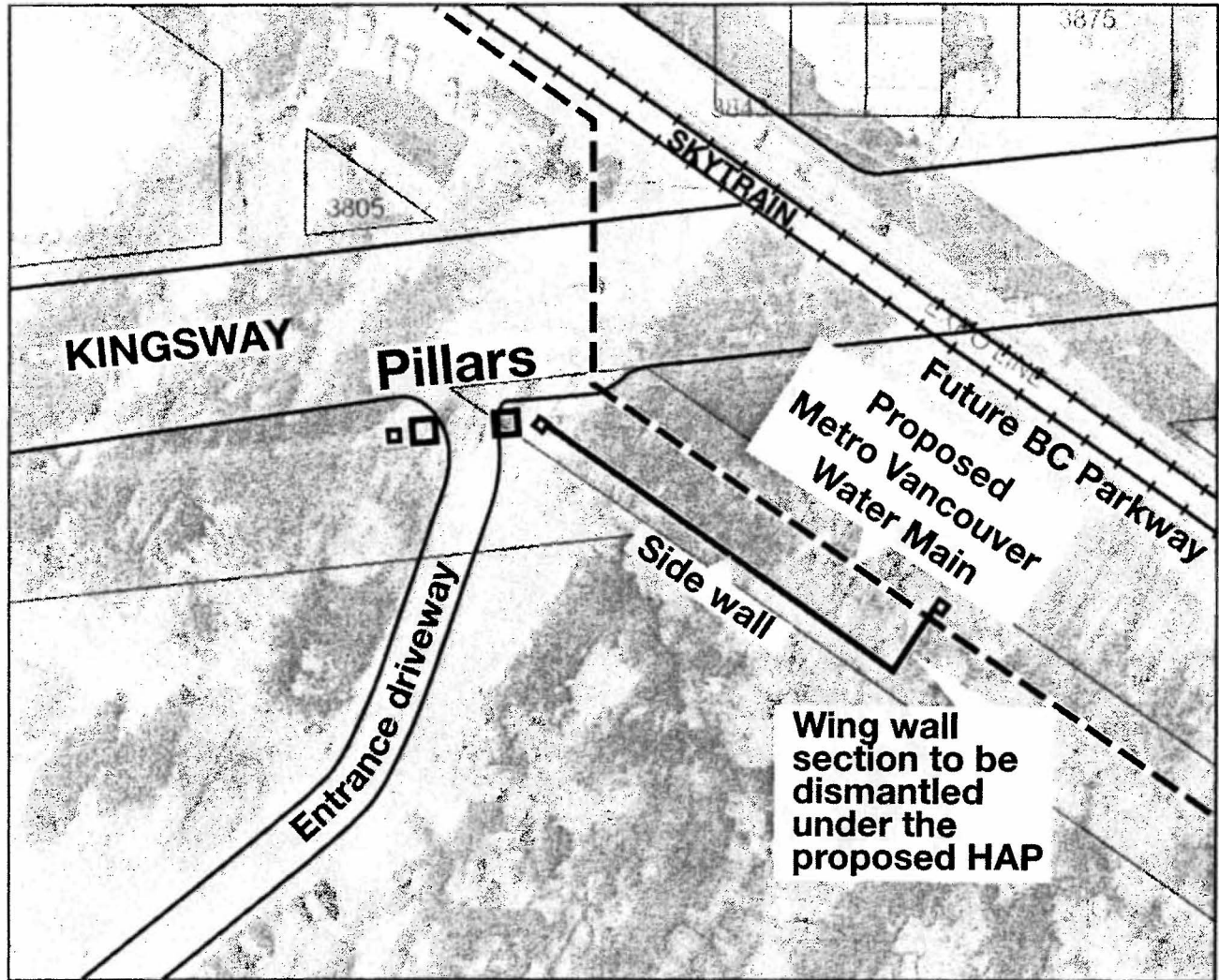


1913



Current condition

Attachment 1
Central Park Entrance Gate



Attachment 2

**Central Park Entrance Gate
Location of Components and
Proposed Heritage Alteration Permit (HAP)**

