



Meeting 2007 June 25

COUNCIL REPORT

TRAFFIC SAFETY COMMITTEE

*HIS WORSHIP, THE MAYOR
AND COUNCILLORS*

**SUBJECT: REVIEW OF STREET LIGHTING ALONG LOUGHEED HIGHWAY
BETWEEN GILMORE AVENUE & BOUNDARY ROAD ,**

RECOMMENDATION:

1. THAT a copy of this report be forwarded to Fred Svenson, 3110 East 18th Avenue, Vancouver, BC, V5M 2R5.

REPORT

The Traffic Safety Committee, at its meeting held on 2007 June 12, received and adopted the *attached* report responding to a request for street lighting along the north side of Lougheed Highway between Gilmore Avenue and Boundary Road.

Respectfully submitted,

Councillor N. Volkow
Chair

Councillor S. Dhaliwal
Vice Chair

Councillor G. Evans
Member

Copied to: City Manager Director Engineering

TO: CHAIR AND MEMBERS
TRAFFIC SAFETY COMMITTEE

DATE: 2007 May 16

FROM: ASST. DIRECTOR ENGINEERING,
TRAFFIC & ENGINEERING SYSTEMS

FILE:
Reference:

**SUBJECT: REVIEW OF STREET LIGHTING ALONG LOUGHEED HWY
BETWEEN GILMORE AVENUE & BOUNDARY ROAD**

PURPOSE: To respond to a request for street lighting along the north side of Lougheed Highway between Gilmore Avenue & Boundary Road.

RECOMMENDATION:

1. **THAT** A copy of this report be forwarded to Fred Svenson, 3110 East 18th Avenue, Vancouver, BC, V5M 2R5.

REPORT

1.0 INTRODUCTION

A letter from Fred Svenson of 3110 East 18th Avenue, Vancouver, expressing concerns over the lack of street lighting along the north side of the Lougheed Highway between Gilmore Avenue and Boundary Road was submitted to the Traffic Safety Committee for consideration. The following staff report describes current conditions and looks at possible mechanisms for completion of the lighting system.

2.0 BACKGROUND

The area of concern is the westbound direction of the Lougheed Highway between Gilmore Avenue and Boundary Road. There are no intersecting streets and only one little used active driveway on the north side that accesses the BC Hydro substation that is directly adjacent the last light west of Gilmore. Sight lines are good, as the road is straight and relatively flat. There are two westbound travel lanes which are separated from the eastbound travel lanes by a raised median. There is also a 2.4 metre paved shoulder on the north side that is used as a bike/emergency stopping lane. The south side of Lougheed has street lighting and a concrete sidewalk that is separated from the roadway by a grass boulevard and finished curb.

Street lighting on Lougheed, between Gilmore Avenue and Boundary Road consists of a finished standard on the south side, and eight lights on the north side situated in the first 100 metres west of Gilmore and the last 100 metres east of Boundary Road. The unlit section between these eight lights remains as it was when Lougheed Highway was devolved by the Province to the City of Burnaby in April of 1999. The attached diagram shows the location of all the existing lights.

To: Traffic Safety Committee
From: Asst. Director Engineering, Traffic & Eng. Systems
Re: REVIEW OF STREET LIGHTING ALONG
LOUGHEED HWY BETWEEN GILMORE AVENUE
& BOUNDARY ROAD
2007 May 16

3.0 DISCUSSION

Where the City does not have finished standard street lights, provides interim street lighting leased from BC Hydro at every street intersection and at a minimum spacing of 215 metres (700 feet) where there are available BC Hydro utility poles suitable for mounting a lease light. As there are no utility poles along this section of Lougheed, provision of street lighting can only be provided by finished standard City lighting.

Installations of City street lighting are undertaken either as a resident initiated Local Area Service Program (LASP) or through adjacent property redevelopment. As the properties fronting Lougheed are Commercial/Industrial the likelihood of a LASP being initiated by adjacent property owners is remote. Property development on the south side of Lougheed has allowed for the installation of street lighting, as well as finishing of the road and construction of separated sidewalks. There is no proposed development pending on the north side of Lougheed, but the old Terasen (BC Gas) site, which is currently vacant, may come forward in the next few years.

If the City undertook installation of street lighting to fill the gap, the estimated capital cost would be in the order of \$80,000. The lighting would have to be placed in an interim position as the road has not been constructed to a final standard and property lines will need to be readjusted at the time of redevelopment. Finally, there are many areas (including other sections of the Lougheed) that do not have street lighting. Accordingly the City should use caution before setting any ultimately costly precedent.

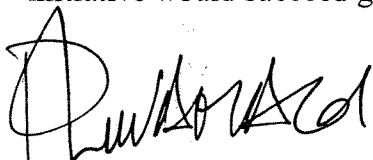
4.0 CONCLUSION

Street lighting will be installed along the remaining section on the north side of Lougheed between Gilmore and Boundary in conjunction with adjacent property development. While there is no development proposal currently submitted for review, with the extensive property development underway in the area, it is possible the vacant Terasen (BC Gas) site may come forward. This would allow for the completion of the lighting and road works at that time through property development requirements.

A finished sidewalk with street lighting is available along the south side of Lougheed for pedestrians, and there are lights on the approach and departures of the intersections where drivers need it most to safely navigate lane changes and make necessary critical decisions.

To: Traffic Safety Committee
From: Asst. Director Engineering, Traffic & Eng. Systems
Re: REVIEW OF STREET LIGHTING ALONG
LOUGHEED HWY BETWEEN GILMORE AVENUE
& BOUNDARY ROAD
2007 May 16

Given the constraints staff will also review the possibility of a City initiated LASP for an interim sidewalk with street lighting, in this instance. However there is no certainty that such an initiative would succeed given the need for assent of both property owners.



P. Liivamagi, P. Eng.
~~ASST. DIRECTOR ENGINEERING,
TRAFFIC & ENGINEERING SYSTEMS~~

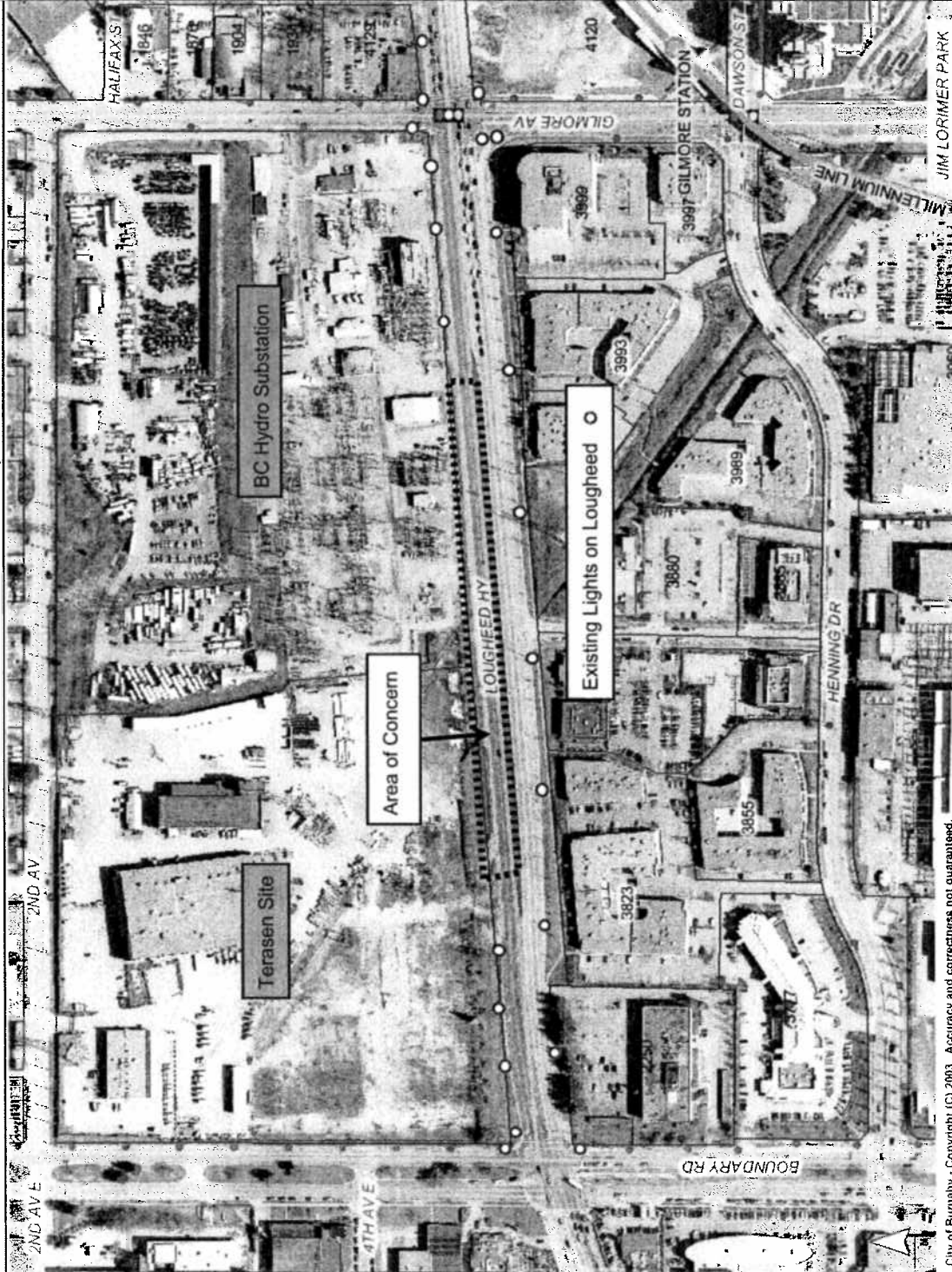
MDS:cg
Attachment

Copied to: City Manager



Lougheed Lighting Boundary to Gilmore

May 30, 2007



City of Burnaby - Copyright (C) 2003 Accuracy and correctness not guaranteed.

This information has been gathered and assembled on the City of Burnaby's computer systems. Data provided herein is derived from a number of sources with varying levels of accuracy. The City of Burnaby disclaims all responsibility for the accuracy or completeness of information contained herein.

Map Scale
1 : 4000

- Strata Units
- Skytrain Stations
- ▨ Skytrain Lines
- Strata Addresses
- Addresses
- Lot
- Street Intersections
- ⊞ Traffic Signal
- ⊞ Street Lights
- ◆ Hydro Lease Lights
- ◆ Street Lights
- Roads
- Private
- Residential
- Collector
- Arterial
- Freeway
- Hydrology
- Colour 2006
- Parks (cont)
- Parkland To Be Acquired
- Parkland
- Boundary