
COMMUNITY HERITAGE COMMISSION

*HIS WORSHIP, THE MAYOR
AND COUNCILLORS*

**SUBJECT: HERITAGE ALTERATION PERMIT:
VORCE TRAM STATION, BURNABY VILLAGE MUSEUM**

RECOMMENDATIONS:

1. THAT Council approve of a Heritage Alteration Permit for the relocation of the Vorce Tram Station, as outlined in this report.
2. THAT staff prepare a report on the feasibility of undertaking a restoration of the Vorce Tram Station to its original design.
3. THAT a copy of this report be forwarded to the Parks, Recreation and Culture Commission.

REPORT

The Community Heritage Commission, at its meeting held on 2006 November 02, received and adopted the *attached* report seeking Council authorization for a Heritage Alteration Permit to allow for the relocation of the Vorce Tram Station.

The Vorce Tram Station will be relocated as part of the previously approved contract associated with the construction of the tram barn for Interurban 1223.

Respectfully submitted,

Councillor C. Jordan
Chair

Councillor G. Begin
Vice Chair

Copied to:	City Manager Director Parks, Recr. & Cult. Services Chief Building Inspector Director Planning & Building
------------	--

TO: CHAIR AND MEMBERS
COMMUNITY HERITAGE COMMISSION

DATE: 2006 October 23

FROM: DIRECTOR PLANNING & BUILDING

SUBJECT: HERITAGE ALTERATION PERMIT:
VORCE TRAM STATION, BURNABY VILLAGE MUSEUM

PURPOSE: To receive Council authorization for a Heritage Alteration Permit to allow for the relocation of the Vorce Tram Station.

RECOMMENDATIONS:

1. **THAT** the Community Heritage Commission recommend Council approval of a Heritage Alteration Permit for the relocation of the Vorce Tram Station as outlined in this report.
2. **THAT** staff prepare a report on the feasibility of undertaking a restoration of the Vorce Tram Station to its original design.
3. **THAT** a copy of this report be forwarded to the Parks, Recreation and Culture Commission.

REPORT**1.0 BACKGROUND**

At its regular meeting of 2005 November 07, Council received and approved the recommendations of a report from the Finance and Civic Development Committee that detailed a plan for the construction of a new tram barn for Interurban 1223 and the relocation of the Vorce Tram Station (see *attachment #1*) at Burnaby Village Museum. Further, a 2006 capital budget project utilizing Casino Gaming Funds was subsequently approved for these works on 2006 April 03.

The Vorce Tram Station is a small passenger shelter, which was originally constructed in 1911 as part of the British Columbia Electric Railway (BCER) Company's Burnaby Lake Interurban Line. The Vorce Tram is typical of the small local passenger stations that existed on the Burnaby Lake and Chilliwack interurban lines. Upon the closure of the interurban line (now the site of the Trans-Canada Highway) in 1953, the station was relocated from the foot of Nursery Street to the 'Lubbock Farm' at Canada Way and Haszard Street for use as a granary shed. In 1977, the station was identified for preservation and relocated to Burnaby Village Museum. In 1992, this significant heritage building was formally protected by Burnaby Heritage Site Designation Bylaw, No. 9807.

The heritage value of the Vorce Tram Station lies in its survival as the last remaining tram station in Burnaby and one of the few remaining passenger station structures left in Greater Vancouver that were once part of the extensive British Columbia Electric Railway interurban system. The heritage significance for this station also lies in its interpretive value as an important cultural feature of Burnaby's transportation history to the public.

2.0 HERITAGE ALTERATION PERMITS

Under the Local Government Act, all structures protected by Heritage Designation Bylaws require that a Heritage Alteration Permit be issued by Council to legally allow for any proposed material and design alterations and building relocations. At this time, it is necessary for Council to approve a Heritage Alteration Permit in order to legally authorize the relocation of the existing Vorce Tram Station as outlined in this report.

3.0 RELOCATION PROPOSAL

As part of the approved proposal for the construction of a tram barn for Interurban 1223, the relocation of the Vorce Tram Station was also advanced in consideration of its historic connection to the B.C. Electric Railway Company. Its current location on the museum site is near the west entrance, on the Elworth House lawn, where it is used as an outdoor display and covered lunch space for school groups. (see *attachment #2*) This location places this heritage structure out of its original context in terms of its relationship to an electric railway. Generally the station is in fair condition.

The station will be relocated to a new site beside the tram barn, adjacent to the railway tracks being constructed to allow for the outdoor display of Interurban 1223. (see *attachment #2*) This will provide for the station to be in context with its original purpose and provide for improved interpretation of its history in association with Interurban 1223. The proposal conforms with the adopted Official Community Plan's heritage provision to ensure the good civic stewardship of City-owned heritage structures through their conservation. Additionally, the project will also comply with the "Standards and Guidelines for the conservation of historic places in Canada" which is used to guide Burnaby's heritage projects.

At the time of the proposal's approval, the relocation and restoration plan for the station had been completed only as a preliminary design scheme. Subsequently, further research and investigation has been conducted and the original design of the station has been determined (see *attachment #3*). As a result of this research, the proposed relocation of the station has now been planned, in detail, to facilitate any future restoration work. The subject Heritage Alteration Permit will allow for the existing station building to be relocated onto a new concrete foundation. A new wood plank station platform, linking the station to the new tram barn, will also be constructed.

The tram barn construction project is on schedule and due for completion by the end of 2006. The budget for relocation of the existing Vorce Tram Station and the construction of the new station platform forms part of the previously Council approved budget for this project.

To: Community Heritage Commission
From: Director Planning & Building
Re: Vorce Tram Station
2006 October 23 Page 3

4.0 RESTORATION PROJECT

The relocation of the Vorce Tram Station also provides an opportunity to complete the restoration of this important civic heritage structure. The original station design included windows, a door and a covered bench with roof canopy to protect passengers from the weather. Additionally, an extended wood station platform provided the ability for passengers to access both the front and rear doors of an interurban. The restoration of these features would provide the station with the ability to serve as the entrance platform for Interurban 1223 on the occasions when it is displayed outdoors and provides additional interpretation opportunities to the museum site. With the concurrence of the Community Heritage Commission and Council, staff will prepare a further report outlining a restoration plan to incorporate these elements along with preliminary cost estimates for consideration.

5.0 NEXT STEPS

The previously approved plan for the relocation of the Vorce Tram Station to a site beside the Tram Barn and adjacent to the railway will enhance interpretation of the structure for visitors to Burnaby Village Museum. The relocation also provides the opportunity to consider the structure's future restoration which will be the subject of a further report. With the concurrence of the Community Heritage Commission and authorization of the Heritage Alteration Permit by Council, the Vorce Tram Station will be relocated as part of the previously approved contract associated with the construction of the tram barn for Interurban 1223.

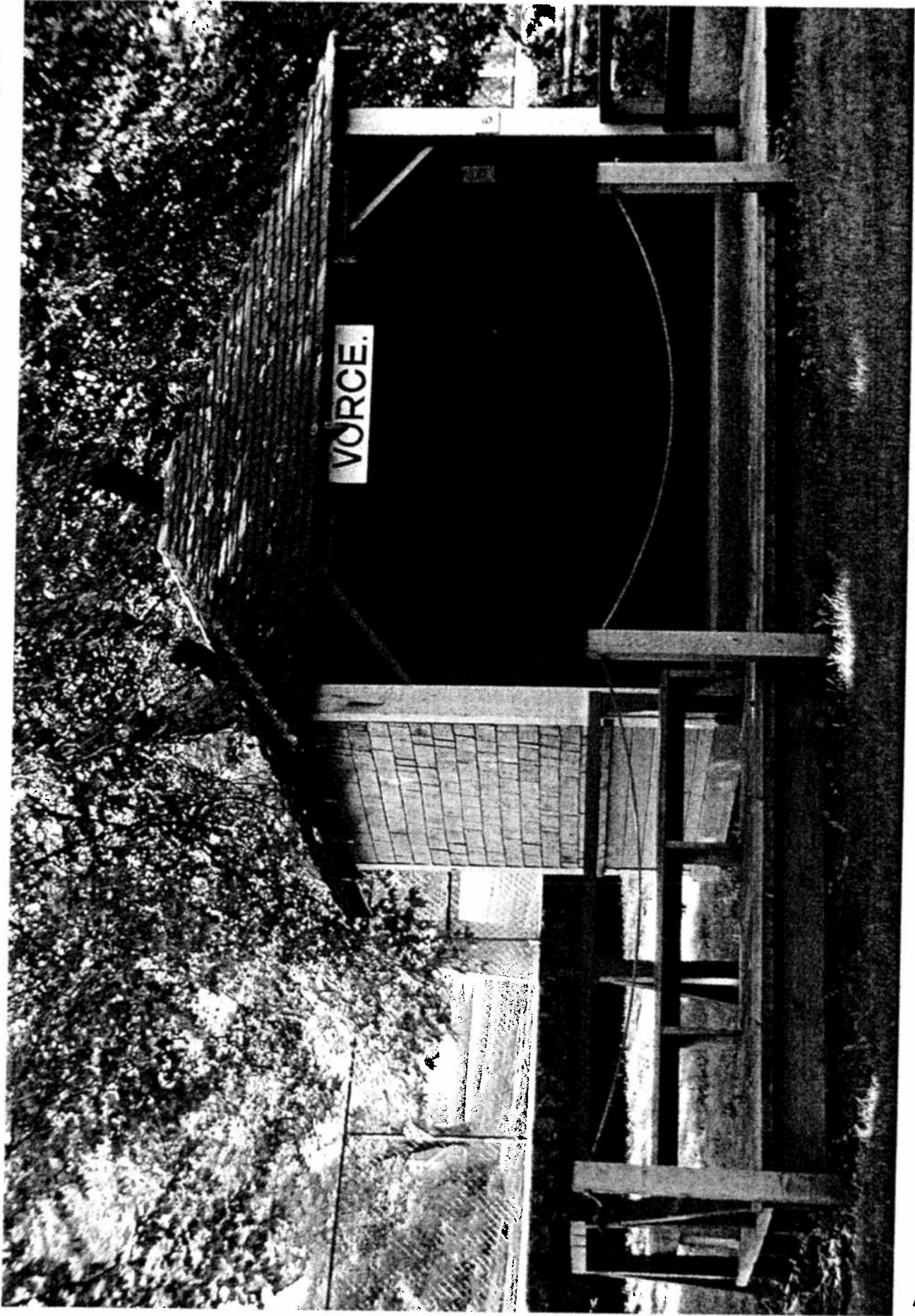


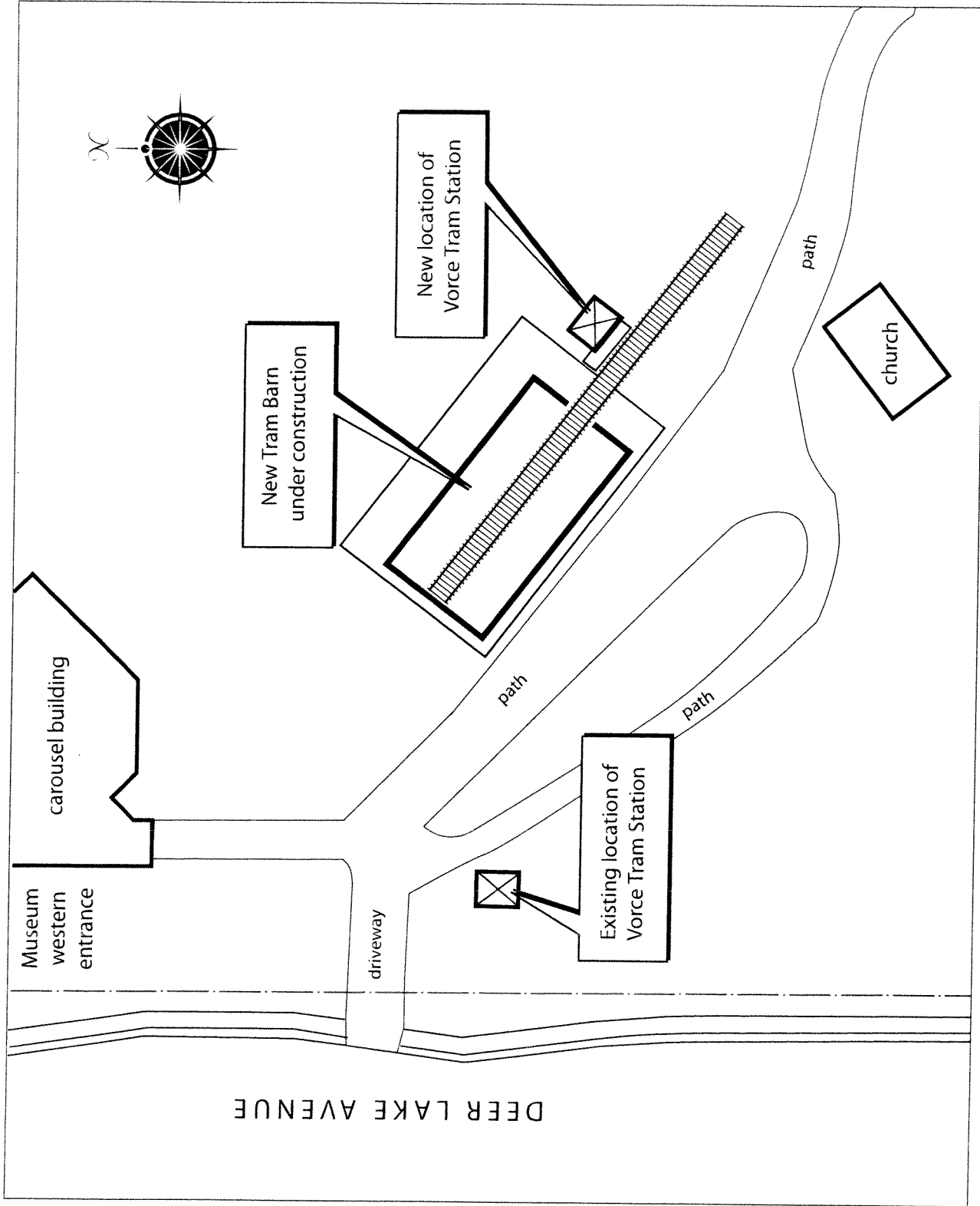
B. Luksun
DIRECTOR PLANNING & BUILDING

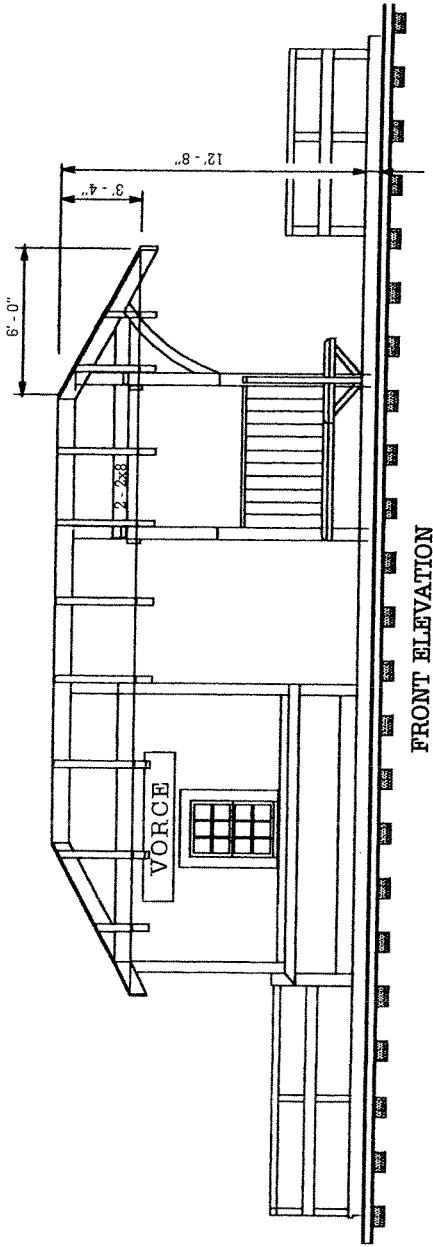
JW:tn

Attachments(3)

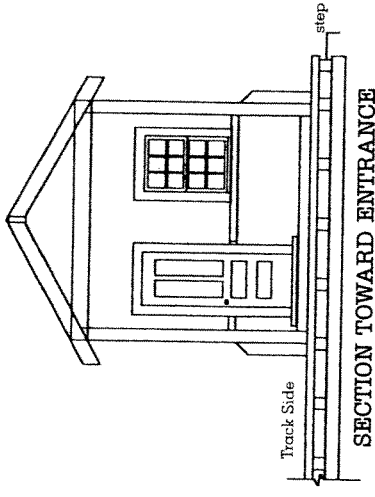
cc: City Manager
Director of Parks, Recreation and Cultural Services
Chief Building Inspector
City Clerk



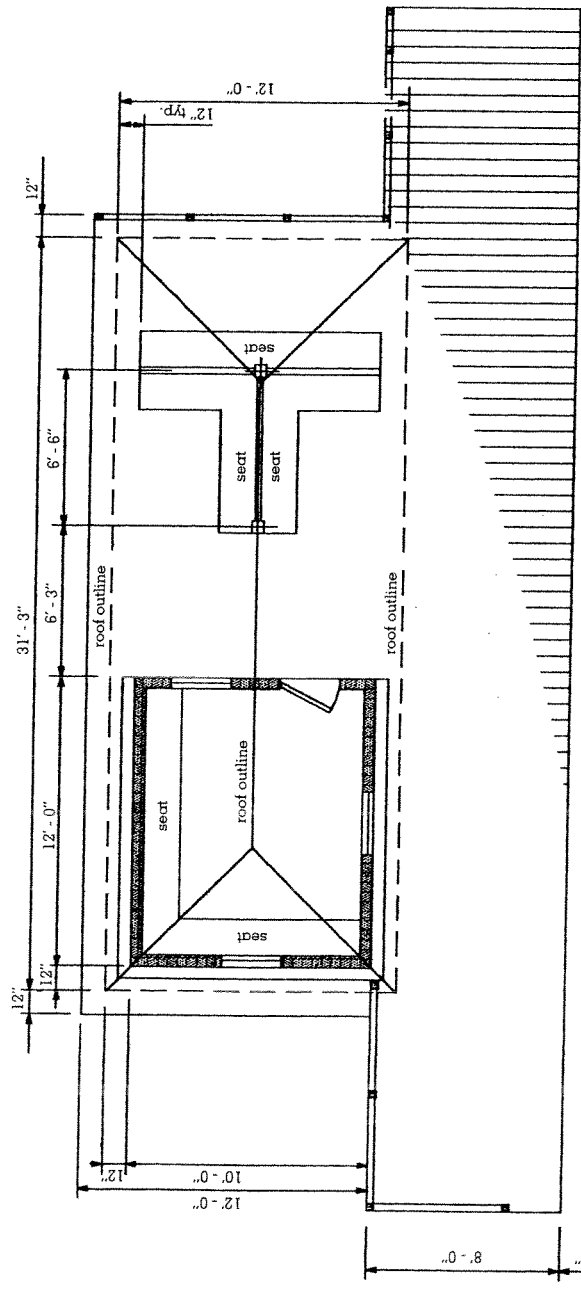




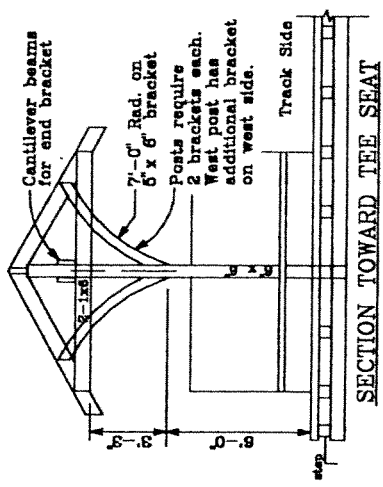
FRONT ELEVATION



SECTION TOWARD ENTRANCE



STATION PLAN



SECTION TOWARD THE SEAT

