

CITY OF BURNABY
TRAFFIC SAFETY COMMITTEE

*HIS WORSHIP, THE MAYOR
AND COUNCILLORS*

SUBJECT: 2005 LASP SPEED HUMP PROGRAM

RECOMMENDATIONS:

1. **THAT** Council approve the 2005 LASP Program process, as outlined in this report.
2. **THAT** Council forward a copy of this report to the residents who requested the inclusion of their street in the year 2005 LASP speed hump initiative.

REPORT

The Traffic Safety Committee, at its meeting held on 2005 March 01, received and adopted the *attached* report reviewing applications for the 2005 speed hump program and recommendations for streets that should proceed to LASP processing.

Respectfully submitted,

Councillor D. Evans
Chair

Councillor N. Volkow
Vice Chair

Councillor L. Rankin
Member

COPY: CITY MANAGER
DIR. ENGINEERING

TO: TRAFFIC SAFETY COMMITTEE
FROM: ASST. DIRECTOR ENGINEERING,
TRAFFIC & ENGINEERING SYSTEMS

DATE: 2005 02 17
FILE: 35000-30-045
EW-Humps-05

SUBJECT: 2005 LASP SPEED HUMPS PROGRAM

PURPOSE: To review applications for the 2005 speed hump program and recommend streets that should proceed to LASP processing.

RECOMMENDATIONS:

1. **THAT** the requests for speed humps as discussed and recommended in this report be advanced through the 2005 LASP Program process.
2. **THAT** a copy of this report be sent to the residents who requested inclusion of their street in the year 2005 LASP speed hump initiative.

REPORT

1.0 INTRODUCTION

The Traffic Safety Committee annually reviews all requests for inclusion in the current year's Local Area Service Program (LASP) for speed humps. Over the course of 2004 staff have been contacted by a number of Burnaby residents inquiring about the installation of speed humps along their roadways and we have outlined the process for implementation to them. Of those, a total of 12 individuals have expressed a desire to initiate the LASP process.

Staff have contacted the Burnaby Fire Department to ensure that any of the proposed location for speed hump installation would not adversely affect Fire Department response. The Fire Department has not yet responded to this request, but subject to their approval we will proceed with the program recommended. We note that in the past The Fire department has expressed some reservation about the cumulative effect of speed hump installations on response times, and the potential for damage to department vehicles. The practice of not installing speed humps on higher order streets is in part a response to this concern.

2.0 REVIEW

All but one of the submitted requests for this year's program are Local Streets and are eligible for meet the guidelines for installation of speed humps.

2.1 Cherrywood Cr (Exhibit 1)

Cherrywood Cr provides a natural bypass between Patterson Ave and Burke St particularly for westbound traffic on Burke St. Speed humps may mitigate this behaviour.

It is recommended the speed hump LASP proceed.

2.2 Coquitlam St: 10th Ave to Armstrong (Exhibit 2)

Speed humps in this location would complement the existing speed humps on Langley St, deter rat running through this neighbourhood and encourage use of Cumberland St and Cariboo Rd (Major Collectors). There is some concern that residents on 11th and 12th Avenues would be "boxed" in by speed humps on Langley and 12th Streets. However, they would only need to traverse 1-2 humps to access Armstrong or 10th Ave. Further, the placement of the humps would be such that they could travel to Cumberland unimpeded by humps via streets parallel to theirs if the humps are a concern to them.

Accordingly, on balance, it is recommended the speed hump LASP be allowed to proceed.

2.3 18th Ave: 2nd St to 1st St (Exhibit 3)

Speed humps on this block of 18th Ave. would assist in overall neighbourhood calming. As part of the 2004 Program, the portion of 2nd St between 16th Ave and 18th Ave successfully petitioned for humps. Future programs in this area may require a modified format, such as alternating streets, to reduce area "saturation" of speed humps which would excessively impede emergency vehicle response times.

It is recommended the speed hump LASP proceed.

2.4 11th Ave: Newcombe St to Cumberland St (Exhibit 4)

This portion of 11th Ave is an exceptionally long, straight section of roadway with no intersecting streets and good sight lines which may encourage some drivers to speed. Recently installed speed humps on 12th Ave may have induced some commuters to divert to 11th Ave. Speed humps installed here, as on the two prior proposals would enhance overall neighbourhood traffic calming in accordance with Community Area Transportation Plan.

It is recommended the speed hump LASP proceed.

2.5 Nithsdale St: Boundary Rd to Smith Ave (Exhibit 5)

Nithsdale is part of grid street system. Speed humps should pose no problem for other area residents. Installation of humps may trigger wider interest in the area on other parallel streets experiencing shortcutting.

It is recommended the speed hump LASP proceed.

2.6 Ridgelawn: Beta Ave to Delta Ave (Exhibit 6)

Ridgelawn is used as a shortcut Brentwood Mall area and may also used when there is congestion on Loughheed and possibly to avoid the signal at Delta. This long stretch of road allows drivers so inclined to speed.

It is recommended the speed hump LASP proceed.

2.7 Southwood: Patterson Ave to McKay Ave (Exhibit 7)

Speed humps should pose no problem for the wider neighbourhood on this portion of Southwood. In addition, the applicant was also sent a petition package for speed bumps in the lane south of Southwood.

It is recommended the speed hump LASP proceed.

2.8 Union: Carleton to Madison (Exhibit 8)

This portion of Union is part of a grid street system and speed humps perform traffic calming with out versatility of access provided by a grid network

It is recommended the speed hump LASP proceed.

2.9 Union: Madison to Rosser (Exhibit 9)

This block of Union is part of a grid street network and speed humps are not considered an inappropriate measure. The application with the one above will deter the extraneous traffic using Union St.

It is recommended the speed hump LASP proceed.

2.10 Union: Willingdon to Alpha (Exhibit 10)

Speed humps will address speeding by students and parents who use Union St to access Alpha School from Willingdon. The applicant wrote to Council in 2004 prompting a report to the Committee recommending pedestrian safety improvements at the Alpha St intersection

It is recommended the speed hump LASP proceed.

2.11 Victory: Nelson Ave to Royal Oak Ave (Exhibit 11)

Victory from Royal Oak westward to Patterson is designated a local collector in the Burnaby Transportation Plan. This classification precludes the deployment of speed humps.

Further it is noted that two local streets, Dunblane Ave and Marlborough Ave (with Barbell Pl) access Victory. In similar circumstances we have consulted with residents affected by a potential LASP on their only exist and found little support for a speed hump initiative.

It is not recommended a speed hump proceed.

2.12 Victory St: Royal Oak to Antrim (Exhibit 12)

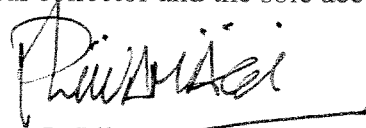
This portion of Victory St is constructed to an 11m standard and although it is not a designated a collector it serves as such for the fronting higher density multi-family complexes. The remaining single family properties are expected to re-develop to multi-family in accordance with the Royal Oak Plan. Victory is also used to access Burnaby South Secondary School via Antrim Ave.

This section of Victory is a part of the proposed Victory Bikeway and the speed humps are expected to be beneficial to this function.

It is recommended the speed hump LASP proceed. An information letter will be sent to the owners/residents of 7117 Barrie Ave, the sole property not included in the proposed LASP, but having access off Victory St.

3.0 CONCLUSION

On the basis of our review, we recommend that all but one of the speed hump applications for the 2005 program proceed to the LASP stage. The exception is Victory St: Nelson Ave to Royal Oak Ave which is a designated local collector and the sole access to a residential enclave to its north.



P. Liivamagi, P. Eng.
ASST. DIRECTOR ENGINEERING,
TRAFFIC & ENG. SYSTEMS

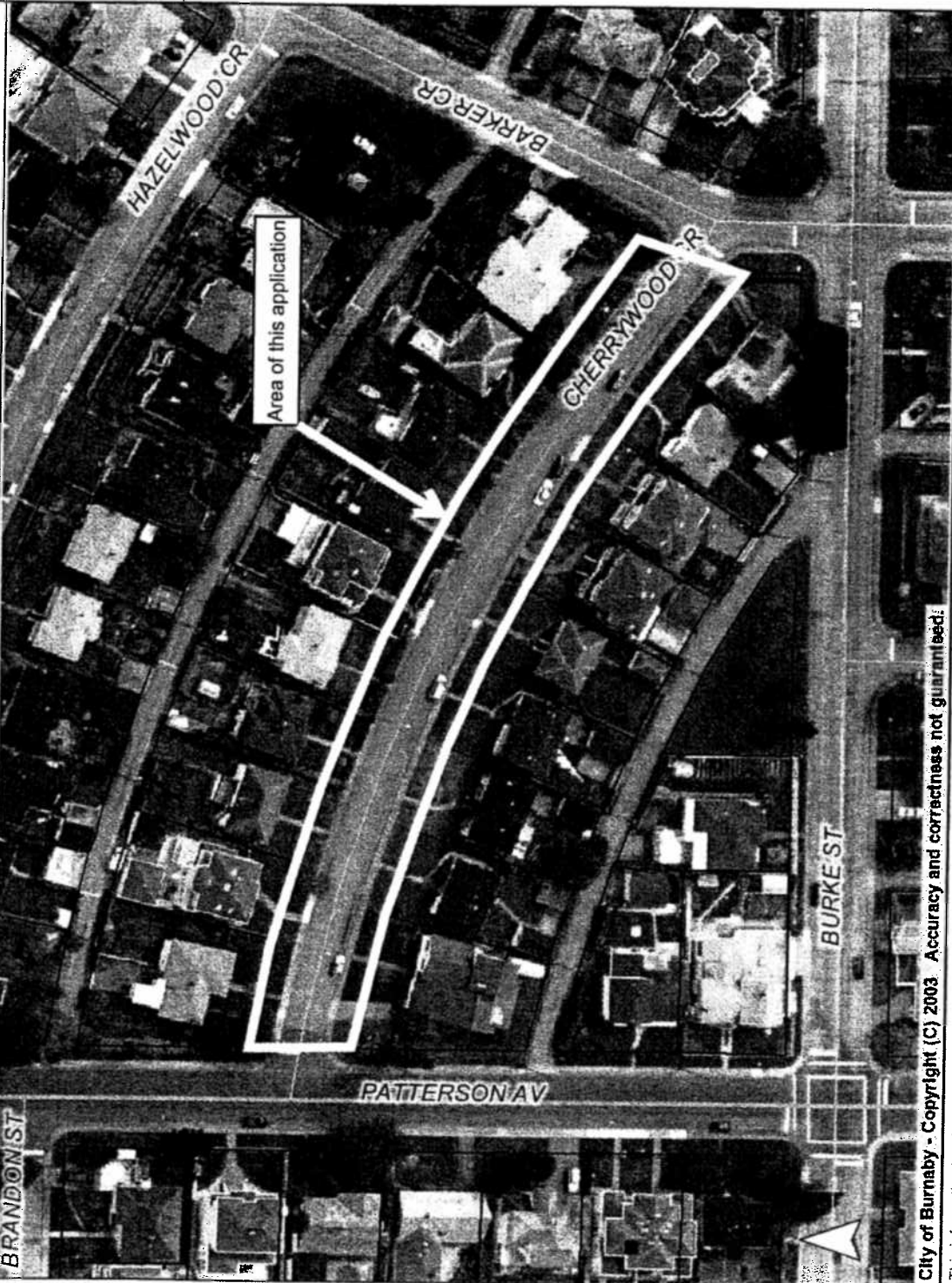
BL:
Attach.

cc: City Manager



Exhibit 1 - 4100 blk Cherrywood

January 17, 2005



City of Burnaby - Copyright (C) 2003. Accuracy and correctness not guaranteed!

This information has been gathered and assembled on the City of Burnaby's computer systems. Data provided herein is derived from a number of sources with varying levels of accuracy. The City of Burnaby disclaims all responsibility for the accuracy or completeness of information contained herein.



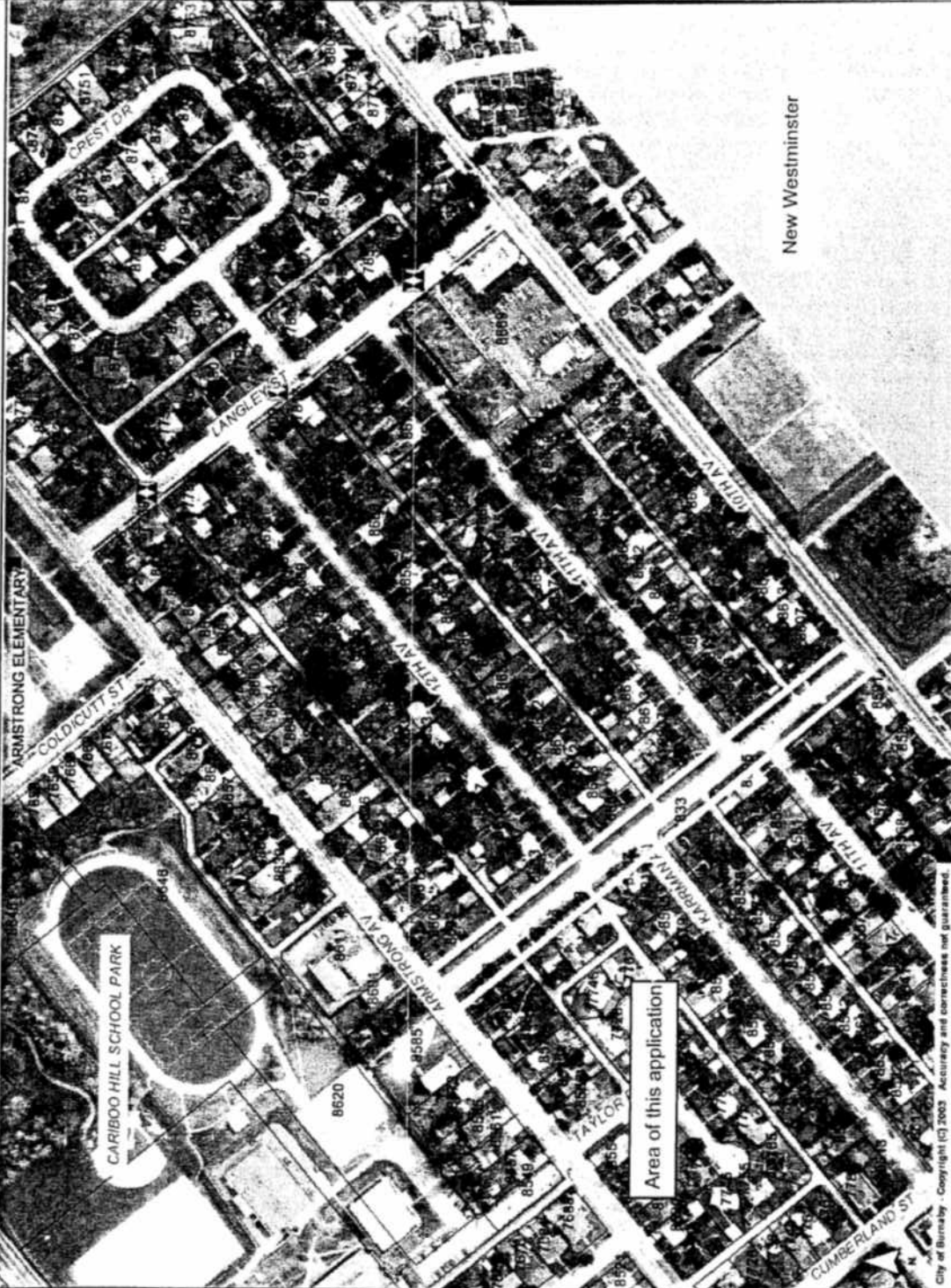
- Strata Units
- Places
 - Golf
 - Police
 - Fire
 - Utility
 - Cemetery
 - School
 - Civic
 - Library
 - Hospital
 - Mail
 - Parks and Rec
 - Skytrain Stations
 - Skytrain Lines
 - Lot
 - Street Intersection
 - Traffic Signal
- Speed Humps
- Roads
 - Local
 - Collector
 - Arterial
 - Freeway
- Hydrology
- Colour 2002
- Parks
- PARKLAND TO BE ACQUIRED
- Other
- Boundary

Map Scale
1 : 1250



Exhibit 2 - 7700/7800 blk Coquitlam

February 16, 2005



This information has been gathered and assembled on the City of Burnaby's computer systems. Data provided herein is derived from a number of sources with varying levels of accuracy. The City of Burnaby disclaims all responsibility for the accuracy or completeness of information contained herein.



Map Scale
1 : 4000

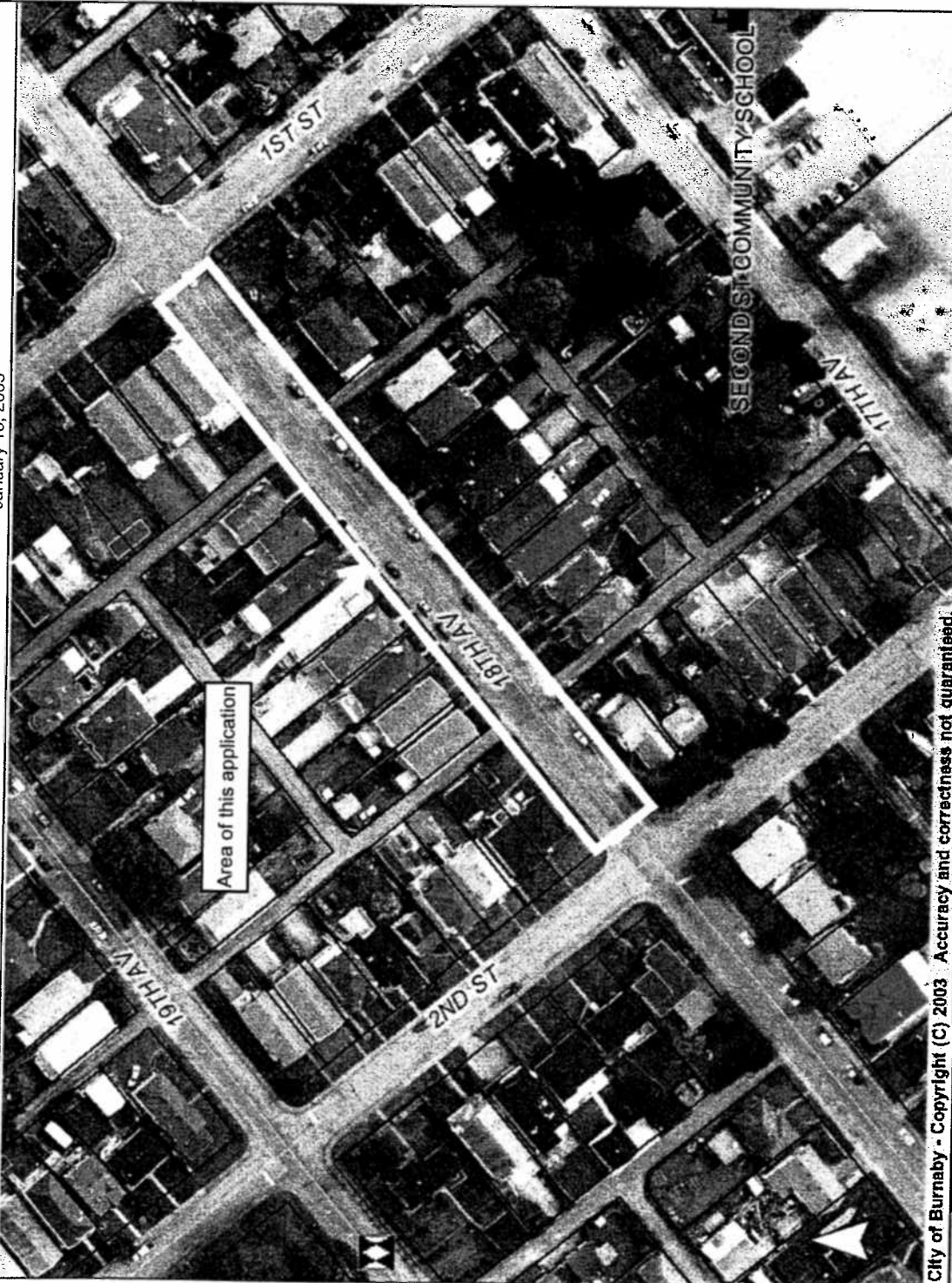
- | | | |
|------------------------|--------------------------------|-----------------|
| Places | Antenna | Boundary |
| 1 Golf | Fireway | □ |
| P Police | Hydrology | |
| F Fire | Colour 2002 | |
| U Utility | Parks | |
| Δ Cemetery | PARKLAND TO BE ACQUIRED | |
| + School | Other | |
| ○ Civic | | |
| L Library | | |
| H Hospital | | |
| ○ Mail | | |
| ⊙ Parks and Rec | | |
| Addresses | | |
| □ Lot | | |
| Speed Humps | | |
| II Speed Humps | | |
| Roads | | |
| Local | | |
| Collector | | |
| Arterial | | |



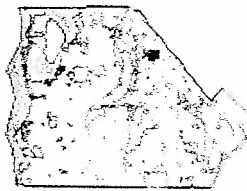


Exhibit 3 - 8100 blk 18th Ave

January 18, 2005



Area of this application



- | | |
|---|--|
| <ul style="list-style-type: none"> ■ Strata Units Places <ul style="list-style-type: none"> 1 Golf P Police F Fire U Utility △ Cemetery S School C Civic L Library H Hospital M Mail Parks and Rec. Skytrain Stations Speed Humps Speed Humps Roads <ul style="list-style-type: none"> Local Collector Arterial Freeway Hydrology Colour 2002 Parks PARKLAND TO BE ACQUIRED Other Boundary | <ul style="list-style-type: none"> □ Lot Street Intersection Traffic Signal Skytrain Lines |
|---|--|



Map Scale
1 : 1500

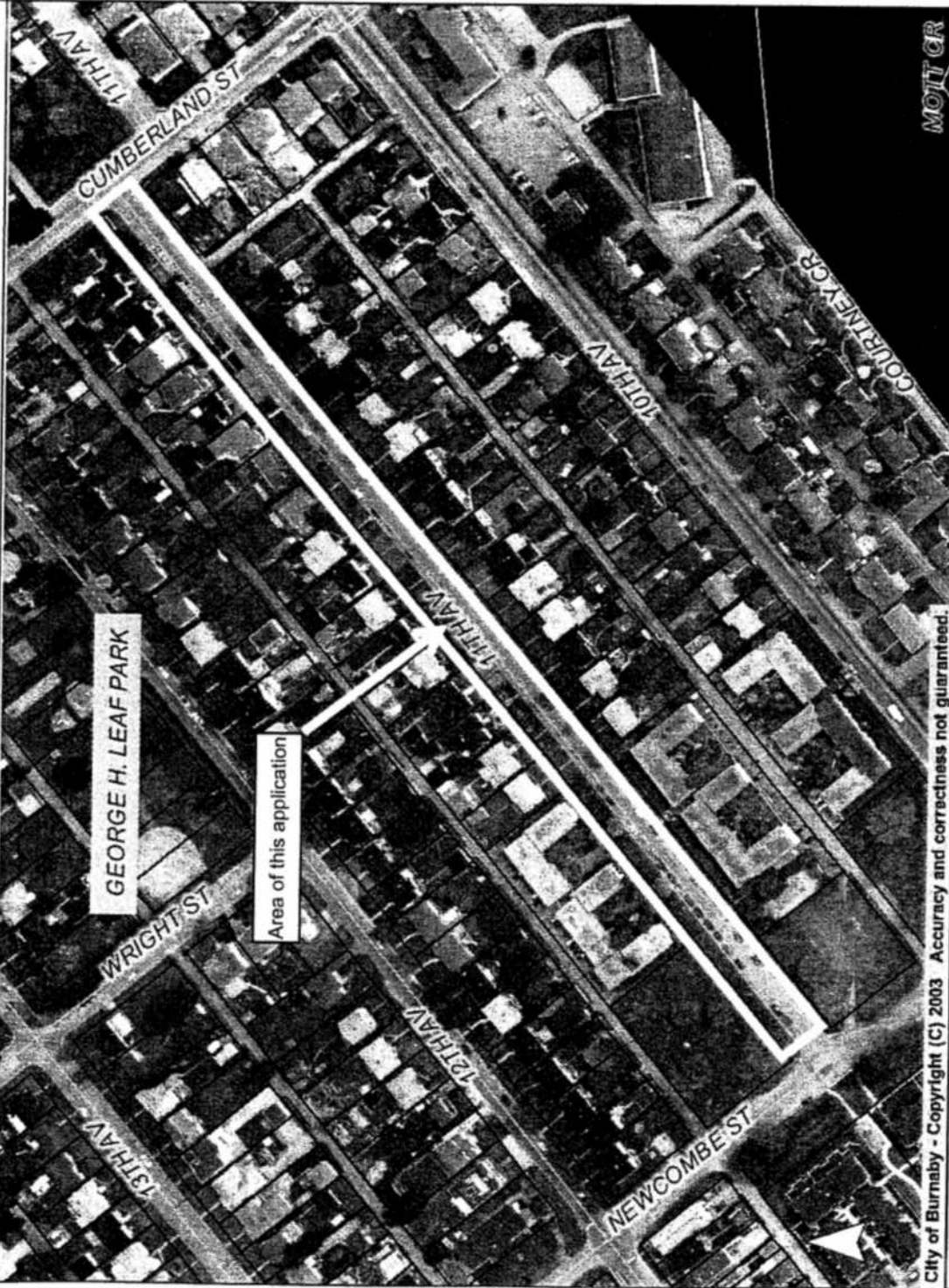
City of Burnaby - Copyright (C) 2003 Accuracy and correctness not guaranteed.

This information has been gathered and assembled on the City of Burnaby's computer systems. Data provided herein is derived from a number of sources with varying levels of accuracy. The City of Burnaby disclaims all responsibility for the accuracy or completeness of information contained herein.



Exhibit 4 - 8300/8400 11th Ave

January 18, 2005



GEORGE H. LEAF PARK

Area of this application



MOIT CR

City of Burnaby - Copyright (C) 2003 Accuracy and correctness not guaranteed.

This information has been gathered and assembled on the City of Burnaby's computer systems. Data provided herein is derived from a number of sources with varying levels of accuracy. The City of Burnaby disclaims all responsibility for the accuracy or completeness of information contained herein.



- Strata Units
- Places
- Golf
- Police
- Fire
- Utility
- Cemetery
- School
- Civic
- Library
- Hospital
- Mail
- Parks and Rec
- Skytrain Stations
- Skytrain Lines
- Lot
- Street Intersection
- Traffic Signal
- Speed Humps
- Roads
- Local
- Collector
- Arterial
- Freeway
- Hydrology
- Colour 2002
- Paths
- PARKLAND TO BE ACQUIRED
- Other
- Boundary

Map Scale
1 : 2500

Exhibit 5 - 3700 blk Nithsdale

January 18, 2005



<ul style="list-style-type: none"> Strata Units Places Golf Police Fire Utility Cemetery School Civic Library Hospital Mail Parks and Rec Skytrain Stations Skytrain Lines Lot Street Intersection Traffic Signal 	<ul style="list-style-type: none"> Speed Humps Speed Humps Roads Local Collector Arterial Freeway Hydrology Colour 2002 Parks PARKLAND TO BE ACQUIRED Other Boundary
---	---

Map Scale
1 : 1500

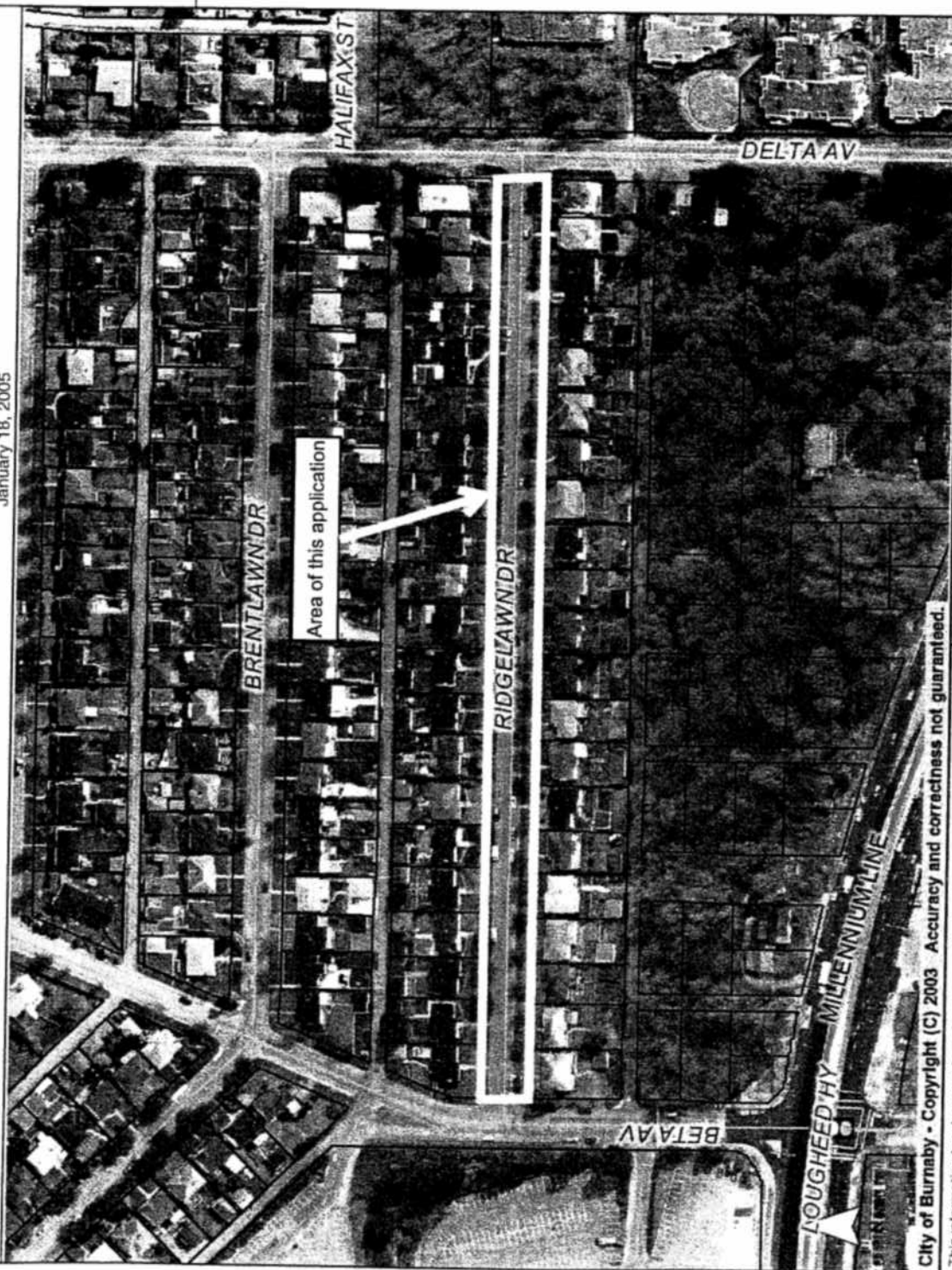
City of Burnaby - Copyright (C) 2003. Accuracy and correctness not guaranteed.

This information has been gathered and assembled on the City of Burnaby's computer systems. Data provided herein is derived from a number of sources with varying levels of accuracy. The City of Burnaby disclaims all responsibility for the accuracy or completeness of information contained herein.



Exhibit 6 - 4700/4800 blk Ridgelawn

January 18, 2005



- | | |
|--|--|
| <ul style="list-style-type: none"> ■ Strata Units Placess 1 Golf P Police F Fire U Utility △ Cemetery S School C Civic L Library H Hospital M Mall Parks and Rec Skytrain Stations Skytrain Lines Lot Street Intersection Traffic Signal | <ul style="list-style-type: none"> ■ Speed Humps ■ Speed Humps Roads Local Collector Arterial Freeway Hydrology Colour 2002 Parks PARKLAND TO ACQUIRED Other Boundary |
|--|--|

Map Scale
1 : 2500

City of Burnaby - Copyright (C) 2003 Accuracy and correctness not guaranteed.

This information has been gathered and assembled on the City of Burnaby's computer systems. Data provided herein is derived from a number of sources with varying levels of accuracy. The City of Burnaby disclaims all responsibility for the accuracy or completeness of information contained herein.

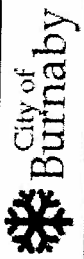


Exhibit 7 - 4100/4200 blk Southwood

January 18, 2005



Area of this application

SOUTHWOOD ST

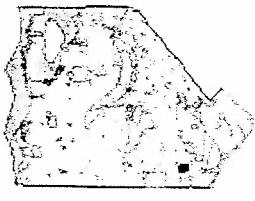
MCKAY AV

MCKAY PARK

PATTERSON AV

City of Burnaby - Copyright (C) 2003 Accuracy and correctness not guaranteed.

This information has been gathered and assembled on the City of Burnaby's computer systems. Data provided herein is derived from a number of sources with varying levels of accuracy. The City of Burnaby disclaims all responsibility for the accuracy or completeness of information contained herein.



- Strata Units
- Placces
- Golf
- Poker
- Fire
- Utility
- Cemetary
- School
- Care
- Library
- Hospital
- Atk
- Parks and Rec
- Skytrain Stations
- Skytrain Lines
- Lot
- Street Intersection
- Traffic Signal
- Speed Humps
- Roads
- Local
- Collector
- Arterial
- Freeway
- Hydrology
- Colour 2002
- Parks
- PARKLAND TO BE ACQUIRED
- Other
- Boundary

Map Scale
1 : 1500





Exhibit 8 - 4200 blk Union

January 18, 2005



- | | |
|---------------------|-------------------------|
| Strata Units | Speed Humps |
| Places | Roads |
| Def | Speed Humps |
| Parking | Roads |
| Fee | Local |
| Utility | Collection |
| Canaltery | Adopt |
| School | Freeway |
| Civic | Hydrology |
| Library | Colour 2002 |
| Hospital | Parks |
| Mat | PARKLAND TO BE ACQUIRED |
| Parks and Rec | Other |
| Skytrain Stations | Boundary |
| Skytrain Lines | Lot |
| Street Intersection | Traffic Signal |

Map Scale
1 : 1250

City of Burnaby - Copyright (C) 2003 Accuracy and correctness not guaranteed.

This information has been gathered and assembled on the City of Burnaby's computer systems. Data provided herein is derived from a number of sources with varying levels of accuracy. The City of Burnaby disclaims all responsibility for the accuracy or completeness of information contained herein.



Exhibit 9 - 4300 blk Union

January 18, 2005



Area of this application

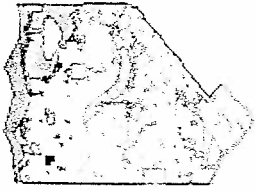
UNION ST

ROSSER AV

MADISON AV

City of Burnaby - Copyright (C) 2003. Accuracy and correctness not guaranteed.

This information has been gathered and assembled on the City of Burnaby's computer systems. Data provided herein is derived from a number of sources with varying levels of accuracy. The City of Burnaby disclaims all responsibility for the accuracy or completeness of information contained herein.



- Strata Units
- Places
 - Golf
 - Police
 - Fire
 - Utility
 - Cemetary
 - School
 - Civic
 - Library
 - Hospital
 - Mar
 - Parks and Rec
 - Skytrain Stations
 - Skytrain Lines
 - Lot
 - Street Intersection
 - Traffic Signal
- Speed Humps
- Roads
 - Local
 - Collector
 - Arterial
 - Freeway
- Hydrology
- Colour 2002
- Parks
- BOUNDARY TO BE ACQUIRED
- Other
- Boundary

Map Scale
1 : 1250



Exhibit 10 - 4500 blk Union

January 18, 2005



Area of this application



- | | |
|---------------------|-------------------------|
| Strata Units | Speed Humps |
| Places | Roads |
| Golf | Speed Humps |
| Police | Roads |
| Fer | Local |
| Utility | College |
| Cemetery | Artical |
| School | Freeway |
| Civic | Hydrology |
| Library | Colour 2002 |
| Hospital | Parks |
| Mail | PARKLAND TO BE ACQUIRED |
| Parks and Rec | Other |
| Skytrain Stations | Boundary |
| Skytrain Lines | Lot |
| Street Intersection | Traffic Signal |

Map Scale
1 : 1250



City of Burnaby - Copyright (C) 2003 Accuracy and correctness not guaranteed.

This information has been gathered and assembled on the City of Burnaby's computer systems. Data provided herein is derived from a number of sources with varying levels of accuracy. The City of Burnaby disclaims all responsibility for the accuracy or completeness of information contained herein.

Exhibit 11 - 4900/5100 blk Victory

January 19, 2005



- | |
|---|
| <ul style="list-style-type: none"> ■ Strata Units Places <ul style="list-style-type: none"> Golf Police Fire Utility Cemetery School Civic Library Hospital Mail Parks and Rec Skytrain Stations Speed Humps Roads <ul style="list-style-type: none"> Local Collector Arterial Freeway Hydrology Colour 2002 Parks BOUNDARY TO BE ACQUIRED Other Boundary Skytrain Lines Lot Street Intersection Traffic Signal |
|---|

Map Scale
1 : 2500

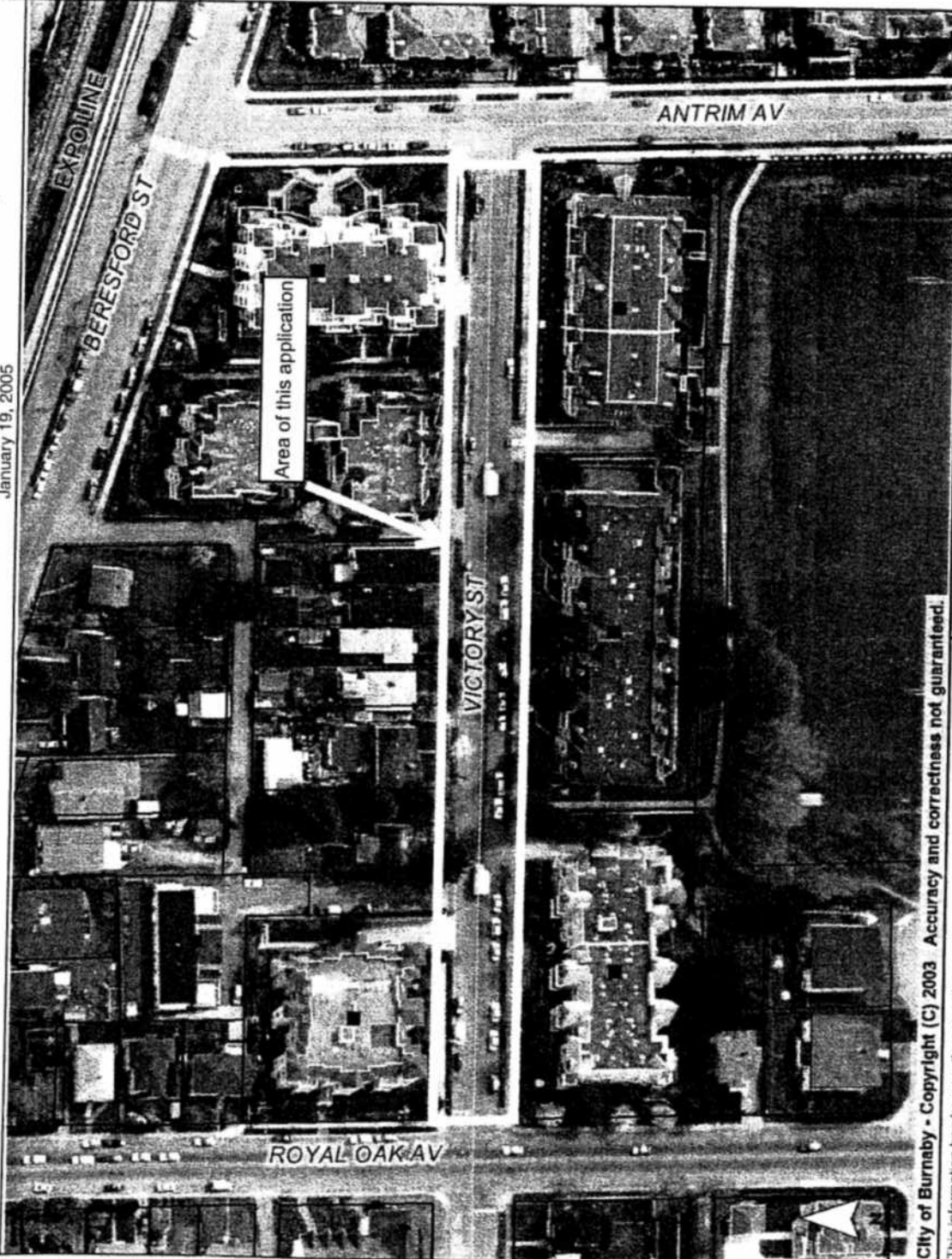
City of Burnaby - Copyright (C) 2003. Accuracy and correctness not guaranteed.

This information has been gathered and assembled on the City of Burnaby's computer systems. Data provided herein is derived from a number of sources with varying levels of accuracy. The City of Burnaby disclaims all responsibility for the accuracy or completeness of information contained herein.



Exhibit 12 - 5200 blk Victory

January 19, 2005



City of Burnaby - Copyright (C) 2003 Accuracy and correctness not guaranteed.

This information has been gathered and assembled on the City of Burnaby's computer systems. Data provided herein is derived from a number of sources with varying levels of accuracy. The City of Burnaby disclaims all responsibility for the accuracy or completeness of information contained herein.



- | | |
|--|---|
| Strata Units | Speed Humps |
| Places | Roads |
| <ul style="list-style-type: none"> God Poker Fire Utility Cemetary School Civic Library Hospital Mail Police and Rec Skytrain Stations Skytrain Lines Lot Street Intersection Traffic Signal | <ul style="list-style-type: none"> Speed Humps Local Collector Arterial Freeway Hydrology Colour 2002 Parks PARKLAND TO BE ACQUIRED Other Boundary |

Map Scale
1 : 1500

