

---

**TO:** CITY MANAGER **DATE:** 2005 July 21

**FROM:** DIRECTOR PARKS, RECREATION AND  
CULTURAL SERVICES

**SUBJECT: BURNABY MOUNTAIN CONSERVATION AREA - DEMOLITION OF  
BARNET RIFLE RANGE CLUBHOUSE BUILDING**

**PURPOSE:** To request Council's authorization for the sale for moving or salvage or  
demolition of the Barnet Rifle Range Clubhouse structures.

---

**RECOMMENDATION:**

1. **THAT** authorization be given for the sale for moving or salvage or demolition of  
the Barnet Rifle Range Clubhouse structures at 1200 Gagliardi Way.

**REPORT**

At its 'Open' meeting of 2005 July 20, the Parks, Recreation and Culture Commission received  
the above noted report and adopted the recommendation contained therein.



Kate Friars  
DIRECTOR PARKS, RECREATION AND CULTURAL SERVICES

KF:tc

Attachments

P:\ADMIN\DATA\COUNCIL\PK-BURNABY MOUNTAIN CONSERVATION AREA - DEMOLITION OF BARNET RIFLE RANGE CLUBHOUSE

Copied to: City Solicitor  
Deputy City Manager  
Director Engineering  
Director Finance  
Director Planning and Building

---

**TO:** CHAIR AND MEMBERS  
PARKS, RECREATION & CULTURE COMMISSION

**FROM:** DIRECTOR PARKS, RECREATION AND CULTURAL SERVICES

**SUBJECT:** BURNABY MOUNTAIN CONSERVATION AREA - DEMOLITION OF  
BARNET RIFLE RANGE CLUBHOUSE BUILDING

---

**RECOMMENDATION:**

1. **THAT** Council be requested to authorize the sale for moving or salvage or demolition of the Barnet Rifle Range Clubhouse structures at 1200 Gaglardi Way.

**REPORT****PROPOSED DEMOLITION**

The three former gun and rifle ranges at 1200 Gaglardi Way, along the Barnet Highway, have been permanently closed and decommissioned and the sites are about to undergo extensive remediation in preparation for the implementation of the Burnaby Mountain Conservation Area Management Plan. The former Barnet Rifle Clubhouse was originally built in 1912 to serve as the teacher's residence at the old Barnet School site located east of the rifle range. It was moved to this location in the 1950's to serve as the Clubhouse and extensively renovated for that purpose. The location of the Barnet Rifle Range Clubhouse is illustrated in the attached sketch.

The property at 1200 Gaglardi Way was transferred to the City for inclusion in Burnaby Mountain Conservation Area as part of the 1996 land exchange between the City, Simon Fraser University and the Province of British Columbia. The property transfer included three existing lease areas for three private gun clubs. The lease to the gun clubs expired on October 31, 1998 and the premises were vacated on March 10, 1999.

Since the closure of the gun club, the building has been vacant and has suffered substantial deterioration. The building currently forms a hazard and has been the target of some vandalism. Despite the building retaining some heritage value associated with the history of Barnet, there are no identified future park uses for the building. The cost to upgrade the structure for residential purposes is estimated to exceed \$100,000.

Given the constraints, the Engineering, Parks and Planning departments are recommending its demolition in order to complete the remediation of the site.

To: Parks, Recreation & Culture Commission  
From: Director Parks, Recreation and Cultural Services  
Re: Burnaby Mountain Conservation Area - Demolition  
of Barnet Rifle Range Clubhouse Building

..... Page 2

Approval of the demolition, sale for moving or salvage is being sought at this time in order to schedule the work in conjunction with the final remediation of the gun club sites, which is to commence shortly. A timely demolition of the Barnet Rifle Range Clubhouse is also required to allow for the transfer of the existing hydro service to the park parking lot for the installation of security lighting.

The estimated cost to demolish the building is \$21,400 (including 7% GST). The demolition of the Barnet Rifle Range Clubhouse is not included in the five year Annual Capital Financial Plan. A readjustment of the Departments' planned 2005 expenditures will be made in order to ensure the Capital spending limit is not exceeded. A report appears elsewhere on the Commission agenda seeking Council authority for the bylaw expenditure.

### CONCLUSION

As noted above, the demolition of the former Barnet Rifle Range Clubhouse building is required to clear the site for the final remediation of the former rifle range sites and to make way for the implementation of the Burnaby Mountain Conservation Area Management Plan. Planning Department staff have been consulted and support the proposed demolition of the subject structure given that there is no viable civic and economic use for the property, and the cost to upgrade it to residential rental standard is prohibitive. For these reasons it is recommended that Council be requested to authorize the sale for moving or salvage or demolition of the former Barnet Rifle Range Clubhouse structure.



Kate Friars

DIRECTOR PARKS, RECREATION AND CULTURAL SERVICES

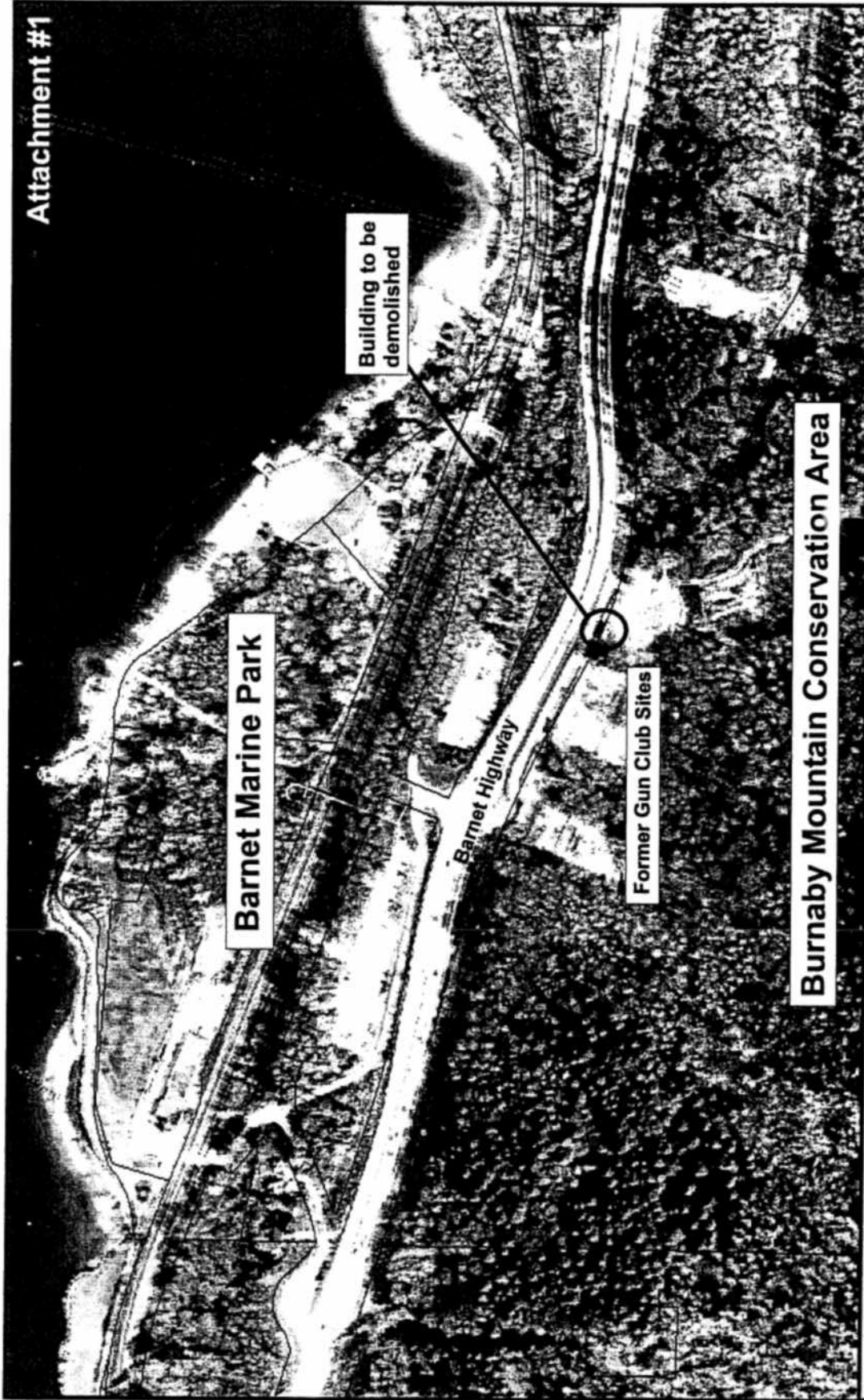
JK

ATS:ats:hh:tc

Attachment

p:\tc\as\barnet rifle range club house. doc

Copied to: City Solicitor  
Deputy City Manager  
Director Engineering  
Director Finance  
Director Planning and Building



**Burnaby Mountain Conservation Area:**  
Proposed demolition of building at former gun club site

P:\admin\shared\stacy gray\reports\attachments\gun club site demolition.cdr