

TRAFFIC SAFETY COMMITTEE

*HIS WORSHIP, THE MAYOR
AND COUNCILLORS*

**SUBJECT: TRAFFIC CONFLICTS AT MADISON AVENUE,
NORTH OF LOUGHEED HIGHWAY**

RECOMMENDATION:

1. THAT Council send a copy of this report to Ray Parker of 3855 Kitchener Street, and the Staples Business Centre c/o Staburn Properties Ltd., 100 Park Royal, West Vancouver, BC, V7T 1A2.

REPORT

The Traffic Safety Committee, at its meeting held on 2005 September 06, received and adopted the *attached* report responding to concerns raised in correspondence from Ray Parker of 3855 Kitchener Street about northbound left turn movements from Madison Avenue into the Staples driveway at Lougheed Highway.

Respectfully submitted,

Councillor Doug Evans
Chair

Councillor Nick Volkow
Vice Chair

Councillor Lee Rankin
Member

Copied to: City Manager Director Engineering

TO: CHAIR AND MEMBERS
TRAFFIC SAFETY COMMITTEE

DATE: 2005 August 29

FROM: ASST. DIRECTOR ENGINEERING
TRAFFIC & ENGINEERING SYSTEMS

FILE: 38000-20 /
38000-00

SUBJECT: **TRAFFIC CONFLICTS AT MADISON AVENUE,
NORTH OF LOUGHEED HIGHWAY**

PURPOSE: To respond to concerns raised in correspondence from Ray Parker of 3855 Kitchener Street about northbound left turn movements from Madison Avenue into the Staples driveway at Lougheed Highway.

RECOMMENDATIONS:

1. **THAT** a copy of this report be sent to Ray Parker of 3855 Kitchener Street, and the Staples Business Centre c/o Staburn Properties Ltd., 100 Park Royal, West Vancouver, BC, V7T 1A2.

REPORT**1.0 INTRODUCTION**

At the 2005 June 7 Traffic Safety Committee meeting, correspondence from Ray Parker of 3855 Kitchener Street was brought forward regarding concerns with the driveway access on Madison Ave to the Staples store located on Lougheed Hwy.

The primary concern centers on vehicles heading northbound on Madison which turn left into the "Staples" driveway located just north of the signalized intersection at Lougheed Hwy. Because the driveway is so close to the intersection, these left turning vehicles are often blocked by southbound vehicles resulting in a queue of northbound vehicles backing into the intersection on Lougheed.

2.0 BACKGROUND

Drivers are legally allowed to make a left turn across the double solid directional dividing line when travelling northbound on Madison to enter the driveway to Staples, provided it is safe to do so and they do not cause undue delay to following vehicles. This is covered under the BC Motor Vehicle Act section 158, where it states;

To: Traffic Safety Committee
From: Asst. Director Engineering, Traffic & Eng. Systems
Re: Traffic Conflicts - Madison Ave N of Lougheed Hwy
2005 August 29..... Page 2

"Where the driver of a vehicle is causing the vehicle to enter or leave a highway and he has ascertained he might do so without unreasonably affecting the travel of another vehicle, the provisions of sections 155 and 157 are suspended with respect to the driver while the vehicle is entering or leaving the highway."

What this means is that drivers turning left across a solid line are responsible for the safety of oncoming or following vehicles. Section 168(c) further affirms the responsibility of the turning driver for the safety of others where it states;

"A driver of a vehicle shall not turn the vehicle to the left from a highway at a place other than an intersection unless.... he has ascertained that the movement can be made in safety, having regard to the nature, condition and use of the highway and the traffic which actually is at the time or might reasonably be expected to be on the highway."

What is unusual and the cause of concern about this location, is the proximity of the driveway to a major signalized intersection. Generally, a full movement access would incorporate as much distance as possible from a busy intersection in it's design, to separate turning movements, simplifying traffic patterns, making it easier for drivers to anticipate, thereby reducing dangerous conflicts. The proximity of this access in combination with the westbound to northbound right turn sweep and its inherent merge make it desirable to limit left turns near this driveway.

3.0 DISCUSSION

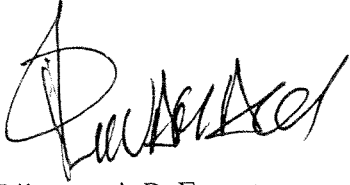
Maintenance of full access is provided for in the road dedication agreement for 4265 Lougheed Highway between Staburn Properties Ltd., the property owner, and the City of Burnaby. The agreement facilitated the installation of the traffic signal at Lougheed & Madison, but maintained the pre-existing driveways' access at the behest of the property owner. This precludes installation of prohibitive measures, and means we must rely on drivers adhering to the items listed from the BC MVA listed above. The driveway access to the property would be subject to review with any future redevelopment.

4.0 CONCLUSION

This location is similar to many others around the City and the Lower Mainland, with a driveway access in close proximity to a major intersection on an undivided road. The introduction of a median on the north leg of Madison would address the concern with the left turners and not impair access to Staples given the location of two alternative driveways also providing access. However, because there is an agreement in place as part of the road dedication and traffic signal installation, assent from Staburn Properties Limited would be required before proceeding with any changes.

To: Traffic Safety Committee
From: Asst. Director Engineering, Traffic & Eng. Systems
Re: Traffic Conflicts - Madison Ave N of Lougheed Hwy
2005 August 29..... Page 3

It is recommended that a copy of this report be sent to Ray Parker of 3855 Kitchener Street, and the Staples Business Centre c/o Staburn Properties Ltd., 100 Park Royal, West Vancouver, BC, V7T 1A2.



P. Liivamagi, P. Eng.
ASST. ~~DIRECTOR~~ ENGINEERING,
TRAFFIC & ENGINEERING SYSTEMS

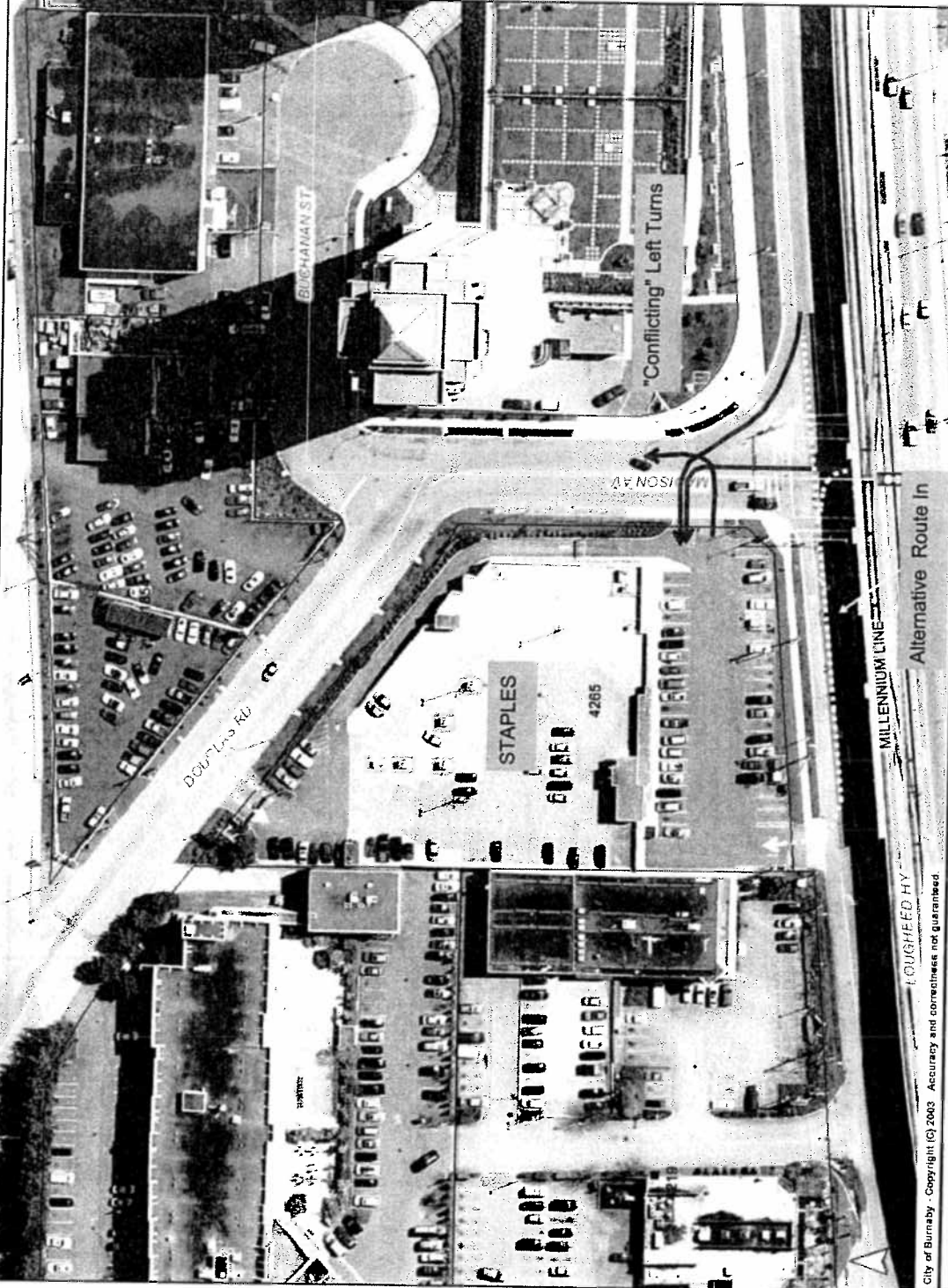
MDS
Attachment

Copied to: City Manager



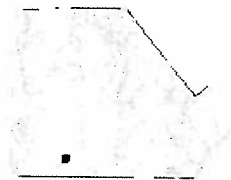
Staples Driveway on Madison at Loughheed

August 29, 2005



City of Burnaby - Copyright (c) 2003 Accuracy and correctness not guaranteed.

This information has been gathered and assembled on the City of Burnaby's computer systems. Data provided herein is derived from a number of sources with varying levels of accuracy. The City of Burnaby disclaims all responsibility for the accuracy or completeness of information contained herein.



- Strata Units
- Skytrain Stations
- Skytrain Lines
- Addresses
- Lot
- Street Intersections
- Traffic Signal
- Speed Humps
- Speed Bumps
- Roads
- Local
- Collector
- Arterial
- Free-way
- Hydrology
- Colour 2004
- Parks
- Parkland To Be Acquired
- Parkland
- Boundary

Map Scale
1 : 1250

