

D

CITY OF BURNABY

TRAFFIC SAFETY COMMITTEE

*HIS WORSHIP, THE MAYOR
AND COUNCILLORS*

SUBJECT: EDMONDS CROSSWALKS AT HUMPHRIES AND LINDEN

RECOMMENDATION:

1. **THAT** Council approve the upgrading of the marked crosswalk of Edmonds at Humphries and at Linden to “special crosswalks” with backlighted overhead signing supplemented by flashing amber lights activated by pedestrians.

REPORT

The Traffic Safety Committee, at its meeting held on 2004 March 02, received and adopted the attached report responding to concerns regarding the adequacy of the marked crosswalk of Edmonds at Humphries.

Respectfully submitted,

Councillor Doug Evans
Chair

Councillor Nick Volkow
Vice Chair

Councillor Lee Rankin
Member

COPY: CITY MANAGER DIRECTOR PLANNING AND BUILDING DIRECTOR ENGINEERING
--

City of Burnaby

INTER-OFFICE COMMUNICATION

TO: TRAFFIC SAFETY COMMITTEE **DATE:** 2004 02 17
FROM: ASST. DIRECTOR ENGINEERING,
TRAFFIC & ENGINEERING SYSTEMS **FILE:** 38000-03
SUBJECT: EDMONDS CROSSWALKS AT HUMPHRIES AND LINDEN
PURPOSE: To respond to concerns regarding the adequacy of the marked crosswalk of Edmonds at Humphries.

RECOMMENDATION:

1. **THAT** the marked crosswalk of Edmonds at Humphries and at Linden be upgraded to "special crosswalks" with backlighted overhead signing supplemented by flashing amber lights activated by pedestrians.

R E P O R T

We have received concerns regarding the adequacy of the existing pedestrian control at Humphries via Eastburn Community Centre staff. At present, there is a marked pedestrian crosswalk of the west leg of Edmonds at the Humphries intersection. One block to the east along Edmonds there is a pedestrian signal at Mary Ave. The other adjacent pedestrian crossing is a marked crosswalk at Linden Ave located 280m west of Humphries.

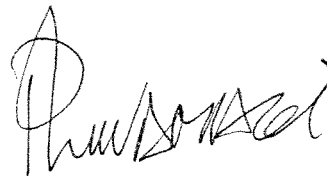
Staff have gathered data on vehicle volume and pedestrian demand at the Humphries crosswalk as well as the one at Linden to determine what level of protection is warranted in accordance with the TAC "Pedestrian Crossing Control Manual" guidelines. The number of pedestrians relative to the availability of safe crossing opportunities (gaps in the traffic) indicates that the marked crosswalk addresses crossing needs for much of the day but during the evening peak period a special crosswalk would be desirable at both intersections. In the hierarchy of pedestrian crossing facilities, the special crosswalk bridges the gap between a marked crosswalk and a pedestrian signal. Typically a special crosswalk incorporates overhead crosswalk signing that is backlighted with additional downlighting of the crosswalk. Bracketing the overhead signs are amber lights which flash when activated by a waiting pedestrian. The flashing lights are

Engineering Department
Re: Edmonds Crosswalk at Humphries

intended to improve the motorists' awareness of waiting pedestrians which is especially useful in a visually "busy" corridor such as Edmonds St.

Concurrently with improvements to the Humphries crosswalk we recommend similar treatments for the Linden crosswalk. This would enhance uniformity of understanding for both motorists and pedestrians at these two adjacent crosswalks.

The existing overhead signing at both crosswalks facilitates the upgrade proposed. The estimated total cost of \$30,000 can be accommodated in this year's Traffic Management Budget subject to intervening priorities. As existing poles will be utilized we do not anticipate any problem integrating the upgrade with the Edmonds Street improvements initiative currently under consideration.



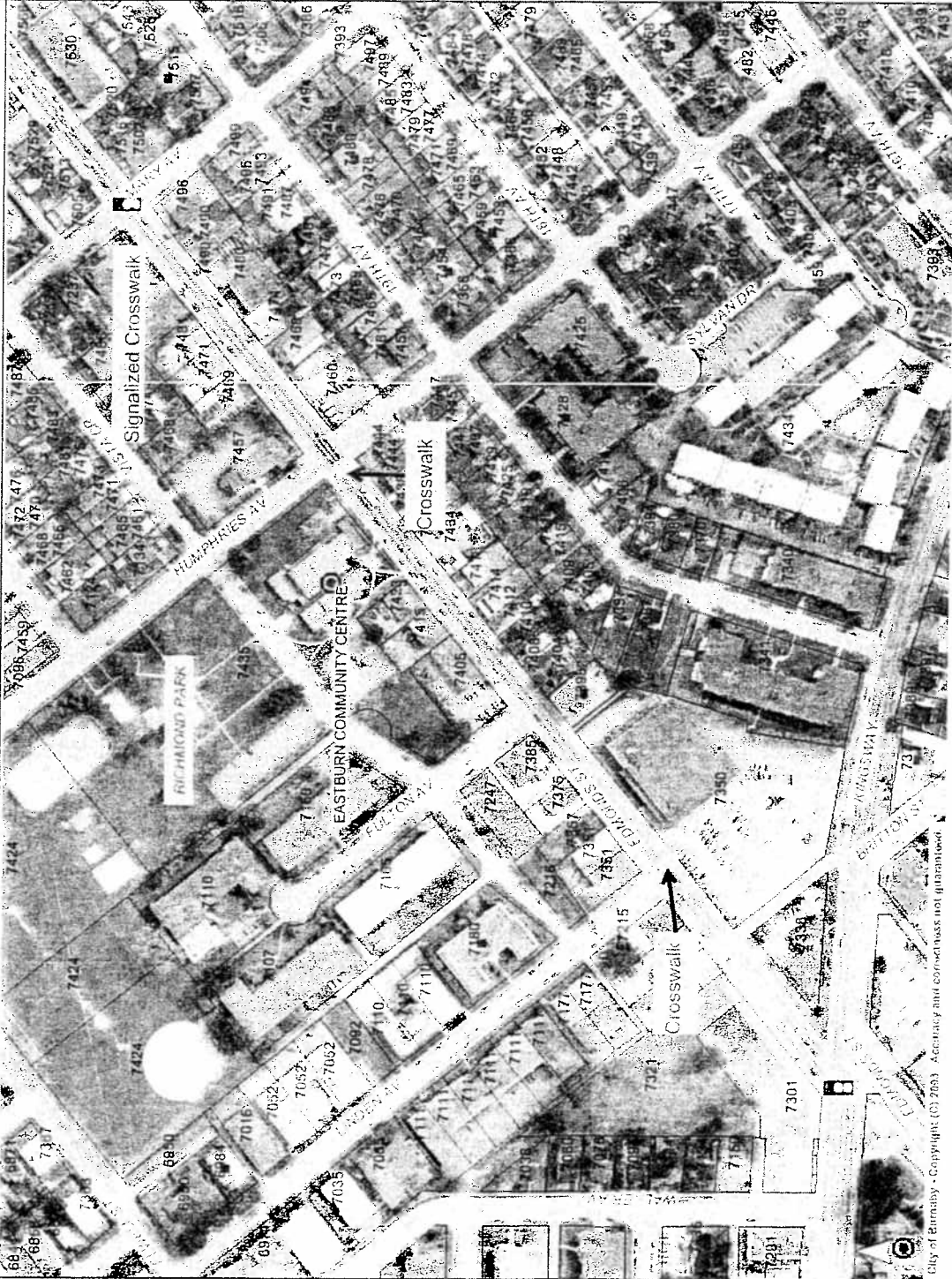
P. Liivamagi, P. Eng.
ASST. DIRECTOR ENGINEERING,
TRAFFIC & ENG. SYSTEMS

PL:jb

cc: City Manager
Director Planning & Building

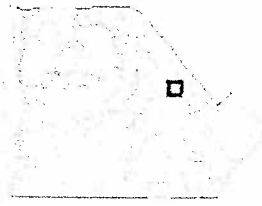
Edmonds St Crosswalks

February 23, 2004



City of Burnaby - Copyright (C) 2003. Accuracy and content not guaranteed.

This information has been gathered and assembled on the City of Burnaby's computer systems. Data provided herein is derived from a number of sources with varying levels of accuracy. The City of Burnaby disclaims all responsibility for the accuracy or completeness of information contained herein.



- | | |
|--|--|
| <ul style="list-style-type: none"> Street Intersections Public Super Speed Humps Speed Bumps Roads Lease Collection Antenna Freeway Hydrology Collect 2002 Parks Water and Sewer Other Boundary | <ul style="list-style-type: none"> Streeted Features Public Super Planes SOLE POLICE FIRE UTILITIES MILITARY SCHOOL CHURCH LIBRARY HOSPITAL KANU PARKS and RECREATION Skytram Stations Skytram Lines Addresses Lot |
|--|--|

Map Scale
1 : 3500