

CITY OF BURNABY

E

TRAFFIC SAFETY COMMITTEE

*HIS WORSHIP, THE MAYOR
AND COUNCILLORS*

SUBJECT: SPROTT STREET: REQUEST FOR REVIEW

RECOMMENDATION:

1. **THAT** Council forward a copy of this report to:
 - (a) Mr. David Pankratz, 5950 Monarch, Burnaby, B.C. V5G 2A1;
 - (b) Ms. Pat Ryan, Gateway Program, #2010 - 4720 Kingsway, Burnaby, B.C. V5H 4N2;
 - (c) Mr. Wayne Keiser, Regional Director, Ministry of Transportation, 7818 6th Street, Burnaby, B.C. V3N 4N8;
 - (d) Burnaby's four MLAs and the Minister of Transportation.

REPORT

The Traffic Safety Committee, at its meeting held on 2004 March 02, received and adopted the attached report responding to concerns, voiced by a delegation, regarding pedestrian crossing safety along Sprott at the 8 Rinks facility.

Arising from discussion of the report, the Committee amended the recommendation to include that a copy of the report be forwarded to Burnaby's four MLAs and the Minister of Transportation.

Respectfully submitted,

Councillor Doug Evans
Chair

Councillor Nick Volkow
Vice Chair

Councillor Lee Rankin
Member

COPY: CITY MANAGER
DIRECTOR PLANNING AND BUILDING
DIRECTOR ENGINEERING

City of Burnaby

INTER-OFFICE COMMUNICATION

TO: TRAFFIC SAFETY COMMITTEE **DATE:** 2004 02 23
FROM: ASST. DIRECTOR ENGINEERING,
TRAFFIC & ENGINEERING SYSTEMS **FILE:** 38000-20
SUBJECT: SPROTT STREET: REQUEST FOR REVIEW
PURPOSE: To respond to concerns, voiced by a delegation, regarding pedestrian crossing safety along Sprott at the 8 Rinks facility.

RECOMMENDATION:

1. **THAT** a copy of this report be sent to:
 - i; Mr. David Pankratz, 5950 Monarch, Burnaby BC V5G 2A1,
 - ii; Ms. Pat Ryan, Gateway Program, #2010 - 4720 Kingsway,
Burnaby BC V5H 4N2,
 - iii;. Mr. Wayne Keiser, Regional Director, Ministry of Transportation,
7818 6th Street Burnaby BC V3N 4N8

REPORT

1.0 INTRODUCTION

Mr. David Pankratz appeared before the Committee at its September meeting. The delegation outlined that:

“Students from Burnaby Central PE classes and after school teams use facilities at 8 Rinks and Burnaby West fields. They walk to these facilities. There is no safe crossing from Norland to 8 Rinks.”

The delegation recommended a marked crosswalk of Sprott, preferably signalized, “mid-block”, at the 8 Rinks parking lot entrance east of the Norland intersection. Staff were asked to report.

2.0 BACKGROUND

The section of Sprott from Norland (west side of Freeway) to Kensington, and Kensington, from Sprott to Canada Way are considered an integral part of the Kensington and Sprott Highway 1 (Freeway) interchanges. As such, they remain under the jurisdiction of the Ministry of Transportation (MOT). They also remain constructed to an older highway (interim) standard. Burnaby staff have lobbied their counterparts working for the Provincial Government for upgrading these roadways to the appropriate urban arterial standard for at least the past two decades. The Ministry for its part has produced a range of proposals for improvement including, at one time, detailed design drawings. Budget constraints have always been cited as the reason for not proceeding to implementation.

At the Sprott interchange, the reconstruction of the Freeway off-ramp to line up with Norland Ave. has been proposed as a way of mitigating the awkward southbound manoeuvre currently required of drivers.

East of the highway on Sprott there is another awkward intersection created by the proximity of Norland Ave. and the Freeway on-ramp alignment. The conflicts here may best be resolved through the installation of a traffic signal. A signal would also address the pedestrian crossing concerns raised by David Pankratz.

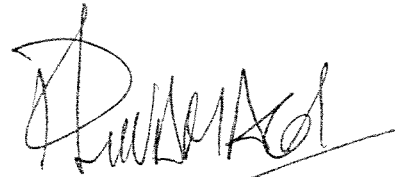
3.0 CURRENT SITUATION

The Provincial Government has created a project team (the Gateway Program) to consider a range of Provincial highway improvements in the Lower Mainland including the upgrading of the Highway 1 corridor through Burnaby. The updating of the Freeway interchanges including Sprott/Kensington is considered a part of the program vision.

We have indicated to the Gateway Program project team that our concerns at the Sprott interchange are more immediate. We have urged them to proceed with the improvements discussed above as quickly as possible and in advance of the larger concepts they are considering. They have stated that there is no current budget to do this but have indicated that they would be willing to meet with City and Regional MoT staffs to discuss this and other pressing issues related to the Highway 1 corridor in Burnaby.

4.0 CONCLUSION

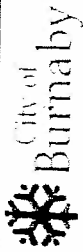
We recommend that, in addition to the correspondent, we send copies of this report to the Gateway Program and Regional Ministry of Transportation officials in anticipation of further discussions.



P. Liivamagi, P. Eng.
ASST. DIRECTOR ENGINEERING,
TRAFFIC & ENG. SYSTEMS

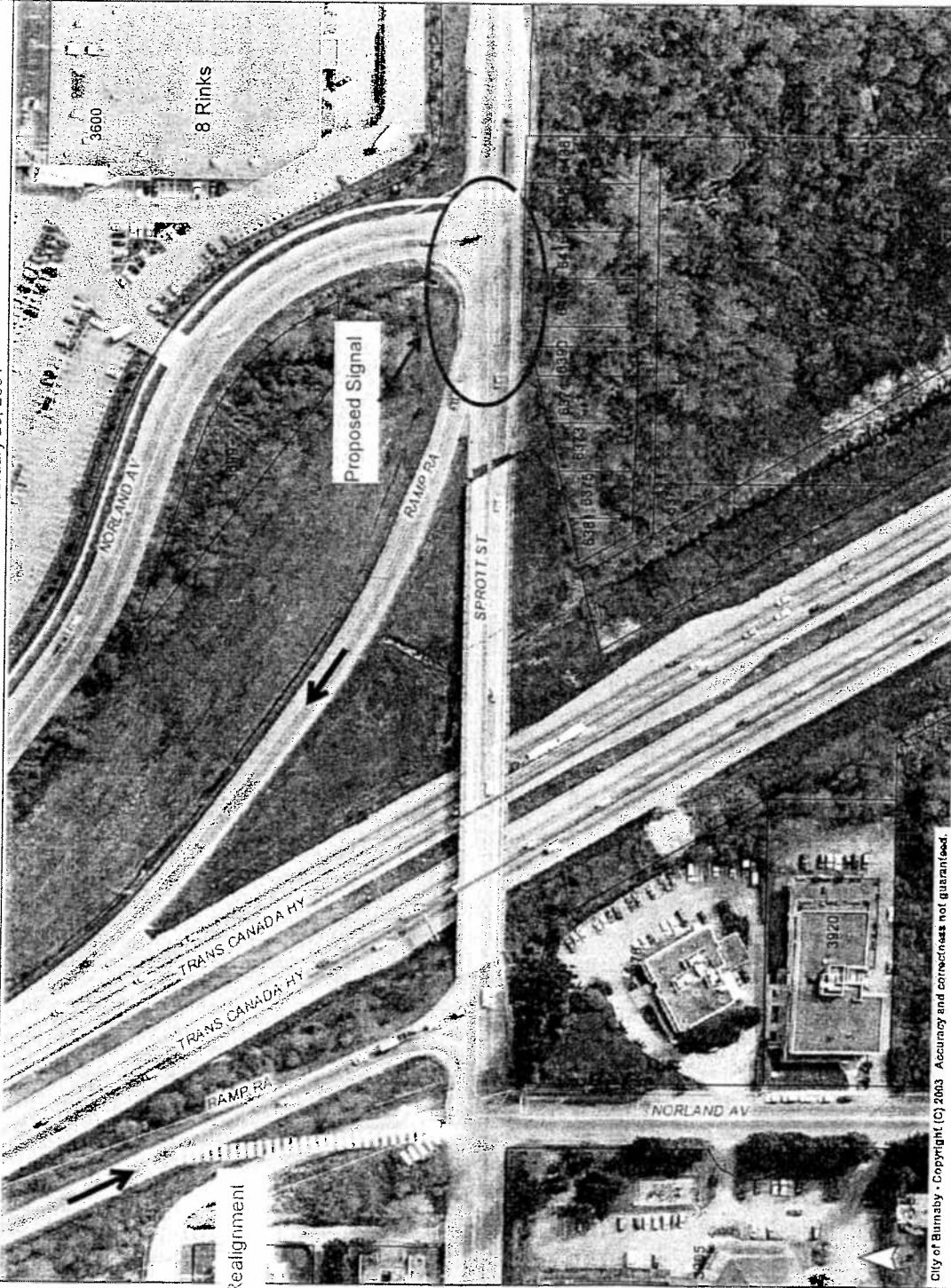
PL:jb

cc: City Manager
Director Planning & Building



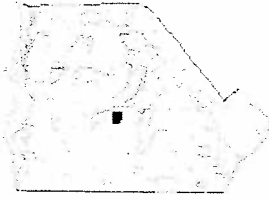
Sprott St. Freeway Interchange

February 23, 2004



City of Burnaby - Copyright (C) 2003 Accuracy and correctness not guaranteed.

This information has been gathered and assembled on the City of Burnaby's computer systems. Data provided herein is derived from a number of sources with varying levels of accuracy. The City of Burnaby disclaims all responsibility for the accuracy or completeness of information contained herein.



- | | |
|--|---|
| Selected Features | Street Intersections |
| <ul style="list-style-type: none"> ▪ State Units ▫ Places 1 GOVT P POLICE F FIRE ⊙ UTILITY ▲ CEMETERY ↓ SCHOOL ⊙ CHURCH L LIBRARY H HOSPITAL ○ MALL ⊙ PARKS and RECREATION ⊙ Skytrain Stations ⊙ Skytrain Lines □ Addresses □ Lot | <ul style="list-style-type: none"> ▫ Traffic Signals ▫ Speed Humps ▫ Speed Bumps ▫ Roads ▫ Loop ▫ Collector ▫ Arterial ▫ Freeway ▫ Hydrology ▫ Colour 2002 ▫ Parks ▫ PARCEL TO BE ACQUIRED ▫ Other ▫ Boundary |

Map Scale
1 : 2000

