

CITY OF BURNABY

TRAFFIC SAFETY COMMITTEE

G

*HIS WORSHIP, THE MAYOR
AND COUNCILLORS*

SUBJECT: 2004 LIP SPEED HUMP PROGRAM

RECOMMENDATIONS:

1. **THAT** Council approve the requests for speed humps, as discussed in this report, to be advanced through the year 2004 LIP Program.
2. **THAT** Council forward a copy of this report to the residents who requested inclusion of their street in the year 2004 LIP speed hump initiative.

REPORT

The Traffic Safety Committee, at its meeting held on 2004 May 04, received and adopted the *attached* report reviewing applications for the 2004 speed hump program and recommending streets that could proceed to LIP processing.

Respectfully submitted,

Councillor D. Evans
Chair

Councillor N. Volkow
Vice Chair

Councillor L. Rankin
Member

COPY: CITY MANAGER
DIRECTOR ENGINEERING

TO: TRAFFIC SAFETY COMMITTEE

FROM: ASST. DIRECTOR ENGINEERING,
TRAFFIC & ENGINEERING SYSTEMS

DATE: 2004 04 26

SUBJECT: 2004 LIP SPEED HUMP PROGRAM

PURPOSE: To review applications for the 2004 speed hump program and recommend streets that could proceed to LIP processing.

RECOMMENDATIONS:

1. **THAT** the requests for speed humps as discussed in this report be advanced through the year 2004 LIP Program.
2. **THAT** a copy of this report be sent to the residents who requested inclusion of their street in the year 2004 LIP speed hump initiative.

REPORT

1.0 INTRODUCTION

Over the course of 2003 staff have been contacted by a number of Burnaby residents inquiring about the installation of speed humps along their roadways and we have outlined the process for implementation to them. Of those, a total of 9 individuals have expressed a desire to initiate the LIP process. Two of these individuals are located on the same portion of Carleton Ave and therefore represent a single response.

Staff have contacted the Burnaby Fire Department to ensure that any of the proposed location for speed hump installation would not adversely affect Fire Department response. The Fire Department has not yet responded to this request, but subject to their approval we will proceed with the program recommended. We note that in the past The Fire department has expressed some reservation about the cumulative effect of speed hump installations on response times, and the potential for damage to department vehicles. The practice of not installing speed humps on higher order streets is in part a response to this concern.

2.0 REVIEW

Three of the roadways discussed below are classified as local collectors and therefore not recommended for the speed hump program. The remaining are eligible for the installation of speed humps within installation guidelines.

2.1 Carleton Ave: North of Moscrop (Diagram A)

Carleton Ave is classified as a local collector. Speed hump installation guidelines indicate their use on local residential streets only. However we note that this section Carleton is proposed to be a link in the Gilmore Corridor North-South Bikeway project and may benefit from Traffic Calming measures implemented as part of that program

Installation of speed humps is not recommended at this time..

2.2 Cambridge St: Beta to N. Gamma (Diagram B)

Cambridge St is classified as a local collector. In addition, it has an average grade of 14%. This is well in excess of the recommend maximum (8%) for installation of speed humps. Cambridge in conjunction with Beta below provides a linkage between Capitol Hill and Penzance. The Traffic concerns of the residents of 4700 Block Cambridge are currently being considered by the Transportation Committee.

Installation of speed humps is not recommended.

2.3 Beta Ave: Cambridge to Penzance (Diagram C)

This section of Beta Ave is a local collector linked to Cambridge Ave as discussed above. We note that Beta is signed as a 30 km/hr Park Zone. There are no LIP “eligible” residential properties fronting Beta saving save one property on the corner with Cambridge which has flankage on Beta

Installation of speed humps is not recommended

2.4 2nd St: 16th to 18th Ave. (Diagram D)

This portion of 2nd St is a residential street between 16th Ave and 18th Ave. 2nd Street Community School covers a major portion of the frontage between 16th and 17th Ave. Speed humps here would tie in with the existing speed humps installed on 19th Ave and assist in overall traffic calming in the community. The portion of 2nd St between 18th Ave and 19th Ave would likely be part of a future program.

It is recommended the speed hump LIP be allowed to proceed.

2.5 Grove Ave: Union to Curtis (Diagram E)

Speed humps on Grove between Union and Curtis would deter use of Grove as a "bypass" for Sperling Ave.

It is recommended the speed hump LIP be allowed to proceed.

2.6 Casewell St: Pritchard to Willoughby (Diagram F)

The grade on Casewell at the west end of this block is at the maximum allowable grade of 8%. And the proposed speed hump in this section may not be possible. however, speed humps placed east of this location should not pose any difficulties.

It is recommended the speed hump initiative be allowed to proceed.

2.7 Georgia St: Madison to Rosser Ave. (Diagram G)

This portion of Georgia St is part of a grid street system and speed humps should pose no problem. Installation of humps here may trigger an area wide interest.

It is recommended that the speed hump LIP be allowed to proceed

2.8 Frances St: Gamma to Delta (Diagram H)

This section of Frances is used as a short cut between Gamma and Delta however it is the speed of this traffic that is the major concern. The proposed humps would be beneficial to cyclists as this portion of Frances is part of the Frances/Union Bike Route

It is recommended the speed hump LIP be allowed to proceed.

3.0 RECOMMENDATIONS

Staff recommend that Carleton Ave, Cambridge St and Beta Ave be excluded from the 2004 LIP Speed Hump Program, and that the initiatives on 2nd St, Grove Ave, Casewell St, Georgia st and Frances St. be advanced to 2004 Speed Hump LIP process.


P. Liivamagi, P. Eng.
ASST. DIRECTOR ENGINEERING,
TRAFFIC & ENG. SYSTEMS

BL: Att..
cc: City Manager

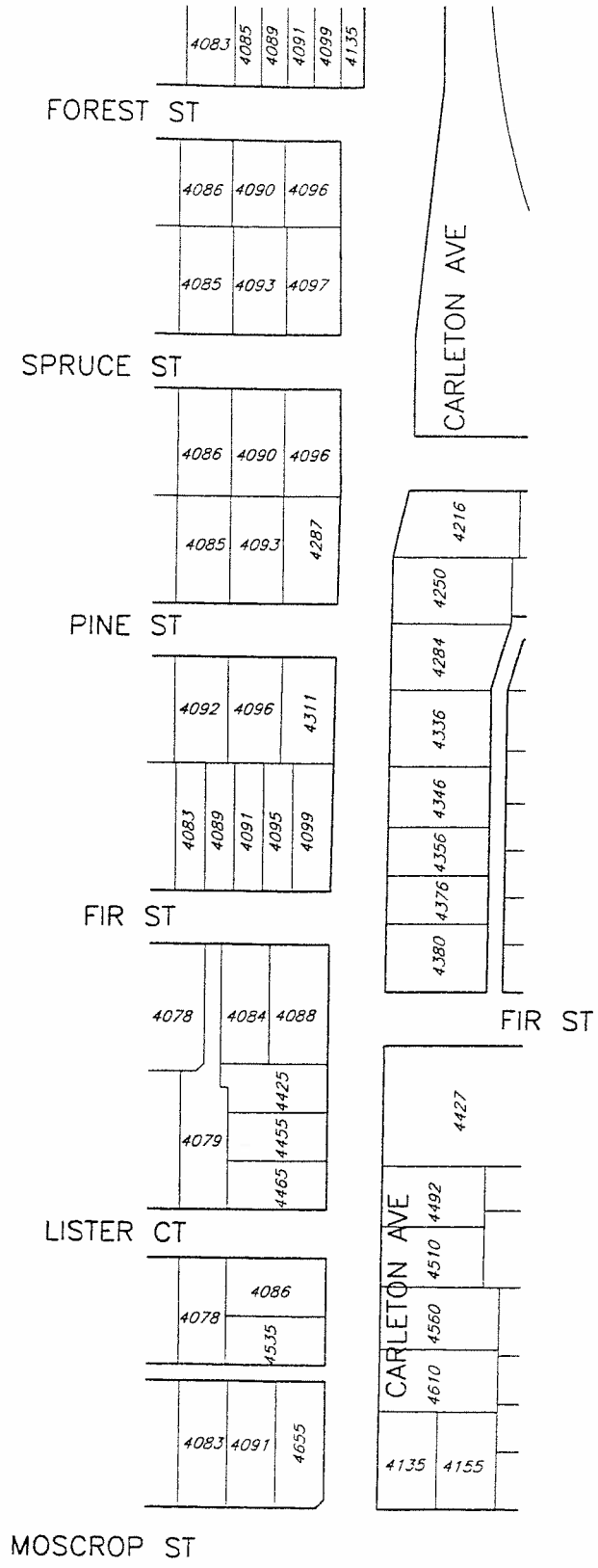
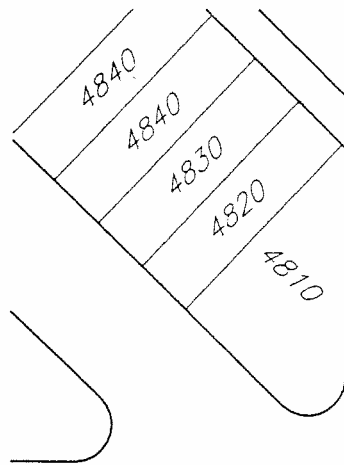


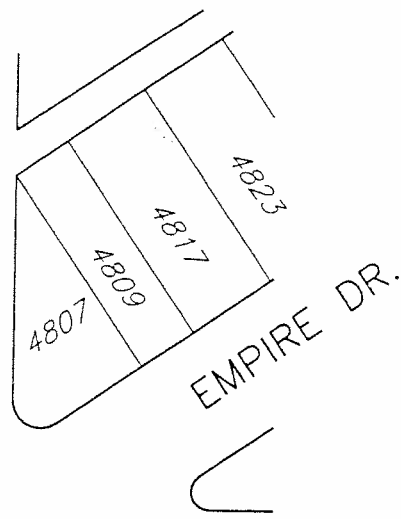
DIAGRAM "A"

NO.	DATE	REVISION
2004 SPEED HUMP L.I.P. CARLETON AVENUE MOSCROP ST TO FOREST ST		
DRAWN BY: G.FUNK	SCALE: N.T.S.	A 596a
APPR'V'D BY:	DATE: 04-04-26	



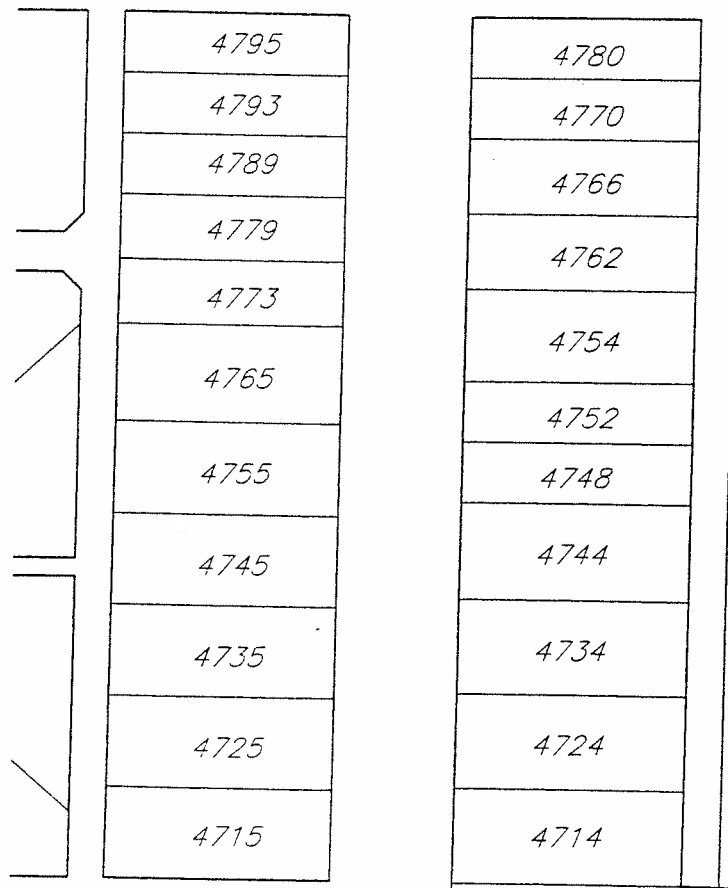
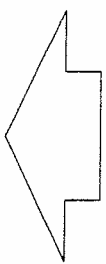


CAMBRIDGE ST



EMPIRE DR.

GAMMA AVE N



BETA AVE N

DIAGRAM "B"

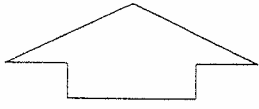
NO.	DATE	REVISION

36



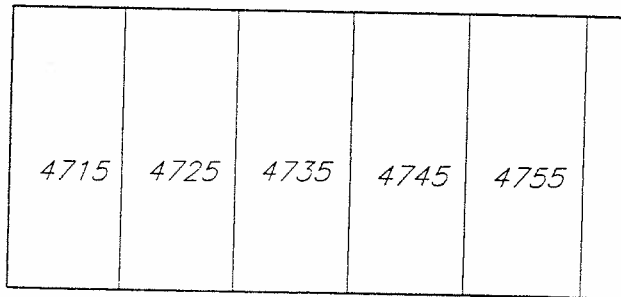
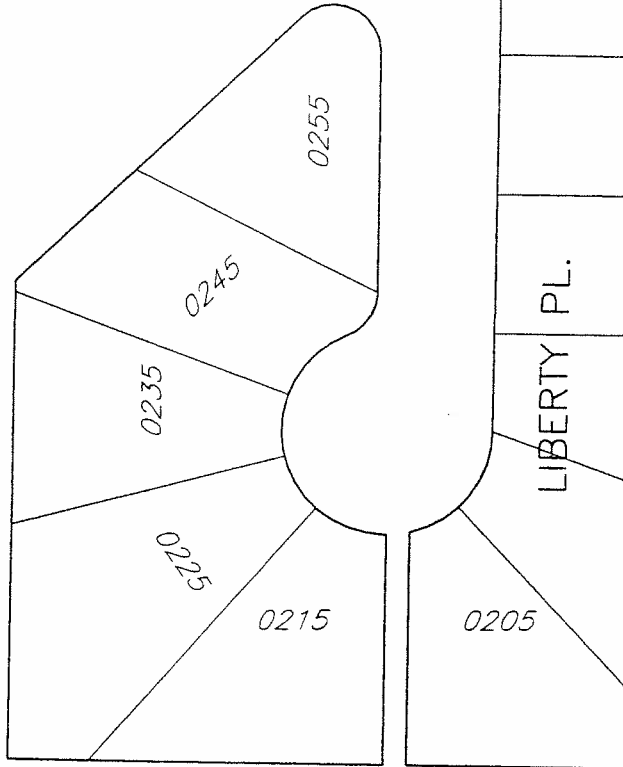
2004 SPEED HUMP L.I.P.
CAMBRIDGE STREET
BETA AVE TO GAMMA AVE

DRAWN BY: G.FUNK	SCALE: N.T.S.	A 596b
APPRV'D BY:	DATE: 04-04-26	



PENZANCE DR.

BETA AVE. N.



CAMBRIDGE ST

DIAGRAM "C"

NO.	DATE	REVISION



City of
Burnaby
ENGINEERING DEPARTMENT

2004 SPEED HUMP L.I.P.
BETA AVENUE N
CAMBRIDGE ST - PENZANCE DR

37

DRAWN BY: G.FUNK

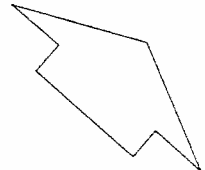
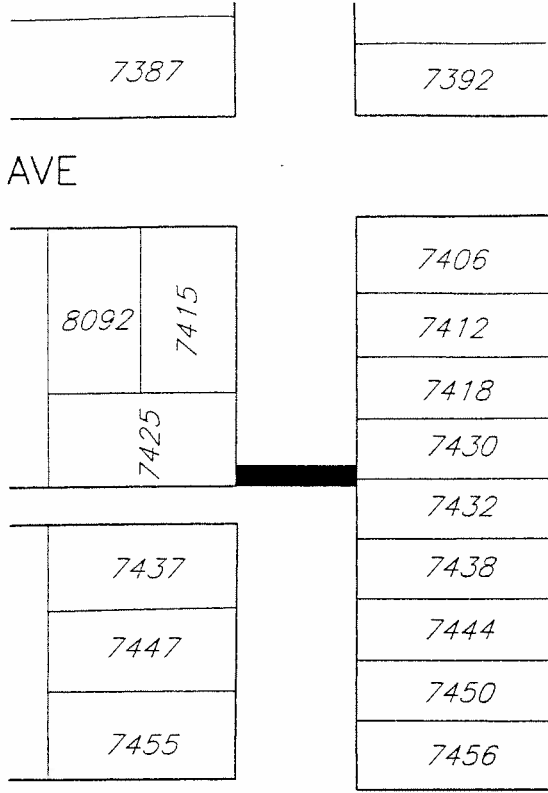
SCALE: N.T.S.

APPRV'D BY:

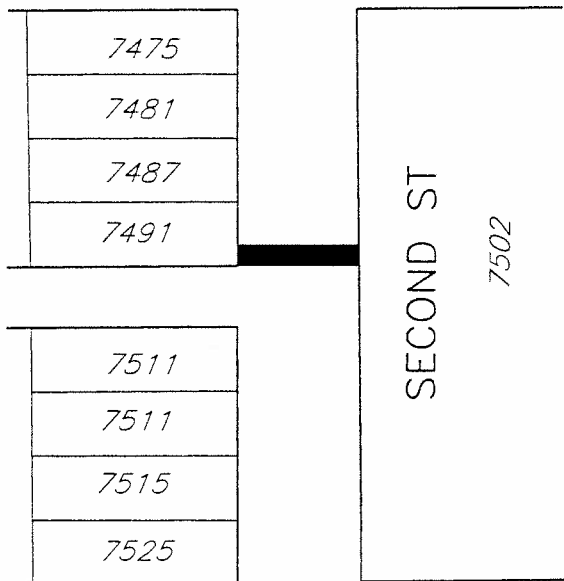
DATE: 04-04-26

A 596c

EIGHTEENTH AVE



SEVENTEENTH AVE



SIXTEENTH AVE

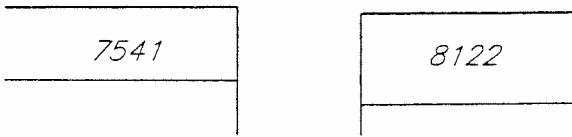


DIAGRAM "D"

38

NO.	DATE	REVISION



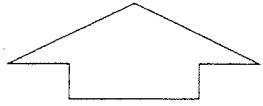
2004 SPEED HUMP L.I.P.
 SECOND STREET
 18th AVE TO 16th AVE

DRAWN BY: G.FUNK	SCALE: N.T.S.	A 596d
APPRV'D BY:	DATE: 04-04-26	

6665 6675

UNION ST

6640 6650 6670 6676



0805 0812
 0813 0860
 0821 0876

0825 0890
 6641 6661 0910
 0920

DUNNEDIN ST

6640 6660 0926
 0940
 0948
 6645 6665 0960
 6675

GROVE AVE

CURTIS ST

6642 6652 6662 6672

DIAGRAM "E"

NO.	DATE	REVISION



2004 SPEED HUMP L.I.P. 39
 GROVE AVENUE
 CURTIS ST TO UNION ST

DRAWN BY: G.FUNK	SCALE: N.T.S.	A 596e
APPRV'D BY:	DATE: 04-04-26	

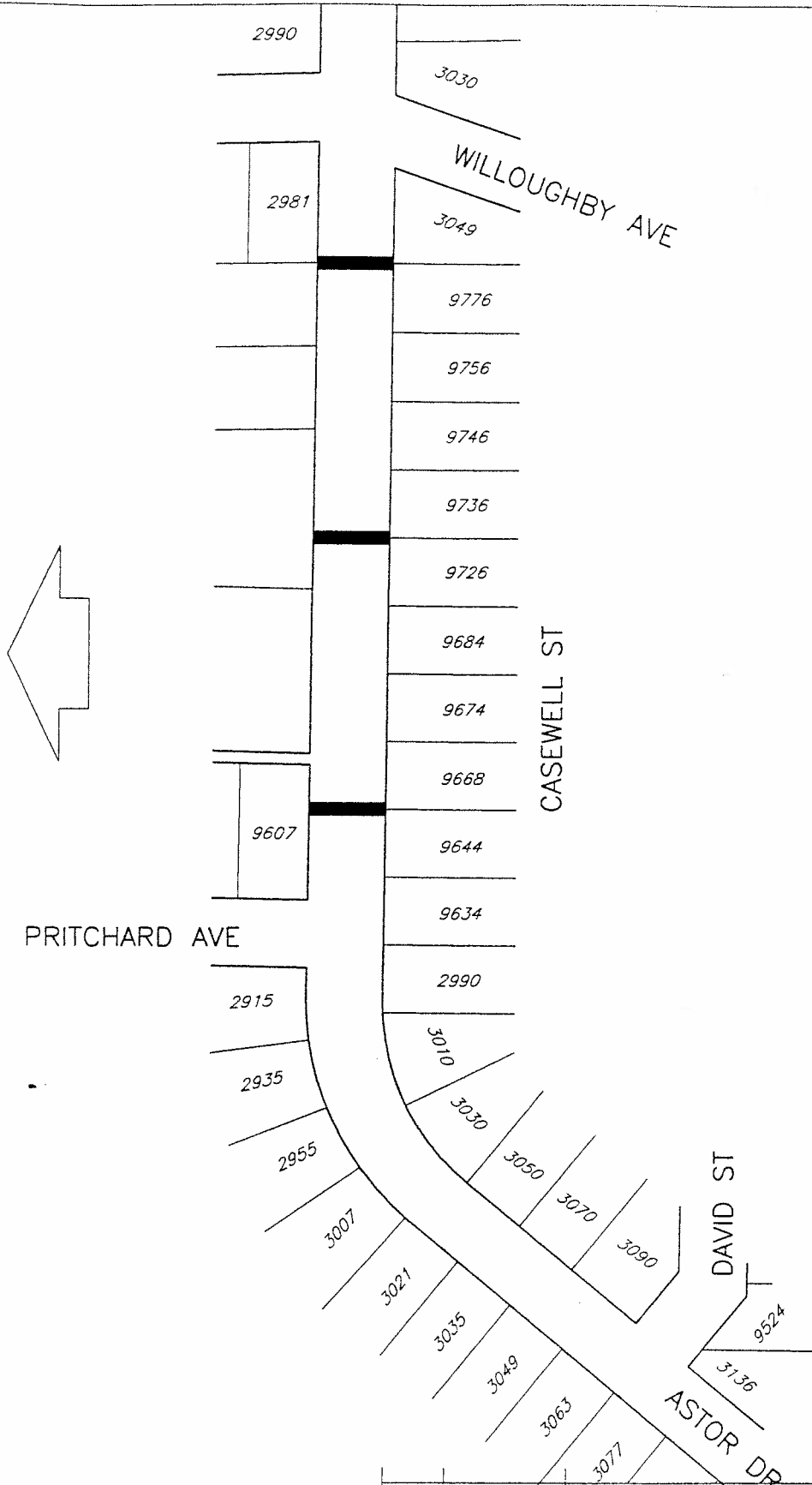


DIAGRAM "F"

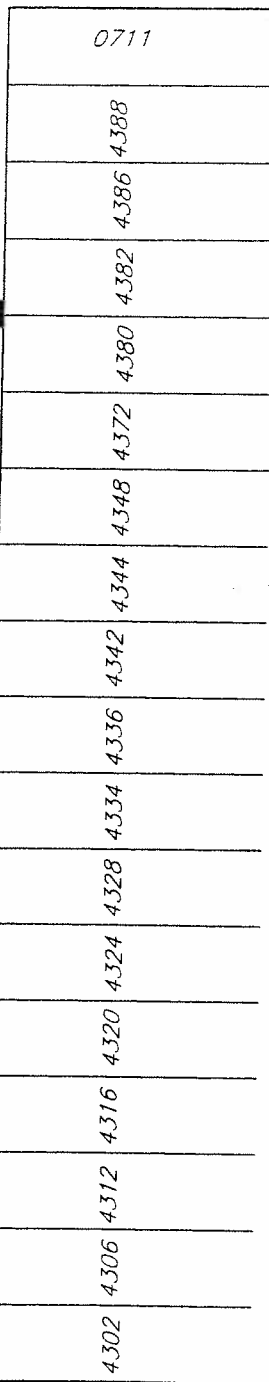
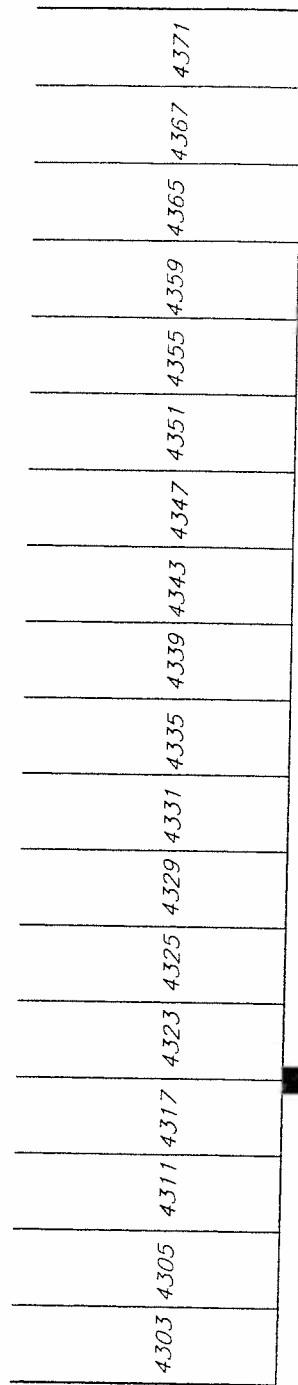
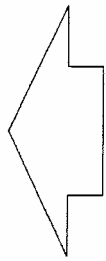
NO.	DATE	REVISION



2004 SPEED HUMP L.I.P.
 CASEWELL STREET
 PRITCHARD AVE - WILLOUGHBY

DRAWN BY: G.FUNK	SCALE: N.T.S.	A 596f
APPRV'D BY:	DATE: 04-04-26	

ROSSER AVE



GEORGIA STREET

MADISON AVE

DIAGRAM "G"

NO.	DATE	REVISION



2004 SPEED HUMP L.I.P.
GEORGIA STREET
MADISON AVE - ROSSER AVE

41

DRAWN BY: G.FUNK

SCALE: N.T.S.

APPR'D BY:

DATE: 04-04-26

A 596g

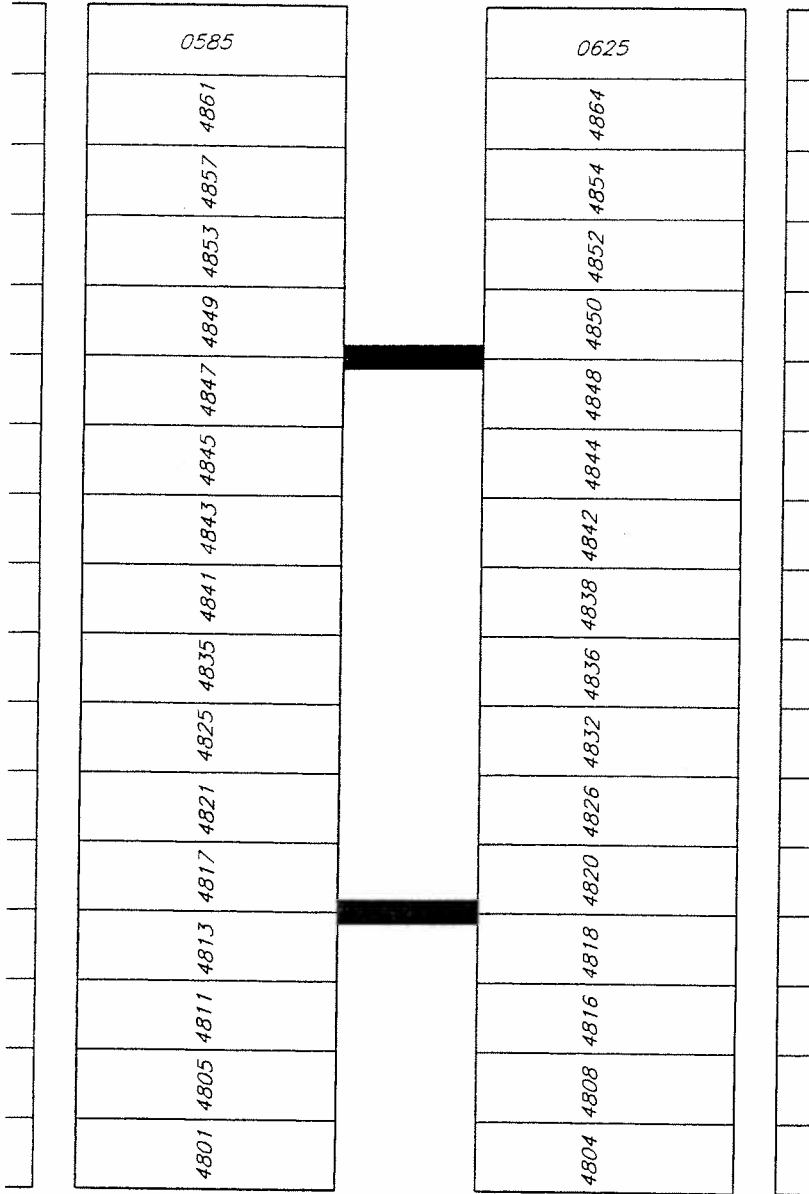
DELTA AVE

4911

4904

0608

0650



GAMMA AVE

4795

4768

FRANCES STREET

DIAGRAM "H"

NO.	DATE	REVISION

42



2004 SPEED HUMP L.I.P.
FRANCES STREET
GAMMA AVE - DELTA AVE

DRAWN BY: G.FUNK SCALE: N.T.S.
APPRV'D BY: DATE: 04-04-26

A 596h