

CITY OF BURNABY

TRAFFIC SAFETY COMMITTEE

E

*HIS WORSHIP, THE MAYOR
AND COUNCILLORS*

**SUBJECT: TIME LIMITED PARKING IN THE 5600 AND 5700 BLOCK
OF MARINE DRIVE**

RECOMMENDATION:

1. **THAT** Council receive the attached report for information.

REPORT

The Traffic Safety Committee, at its meeting held on 2003 June 03, received and adopted the *attached* report providing information on the results of discussions with local businesses concerning time limited parking on Marine Drive between MacPherson and Gilley Avenues.

Respectfully submitted,

Councillor D. Evans
Chair

Councillor N. Volkow
Vice Chair

Councillor L. Rankin
Member

COPY: CITY MANAGER
DIRECTOR ENGINEERING
OIC, RCMP

City of Burnaby

INTER-OFFICE COMMUNICATION

TO: TRAFFIC SAFETY COMMITTEE **DATE:** 2003 05 20

FROM: ASST. DIRECTOR ENGINEERING,
TRAFFIC & ENGINEERING SYSTEMS **FILE:** 38000-20

SUBJECT: **TIME LIMITED PARKING IN THE
5600 AND 5700 BLOCK OF MARINE DRIVE**

PURPOSE: To provide the Committee with the result of discussions with local businesses concerning time limited parking on Marine Drive between MacPherson and Gilley Avenues.

RECOMMENDATION:

1. **THAT** this report be received for information by the Committee.

R E P O R T

1.0 INTRODUCTION

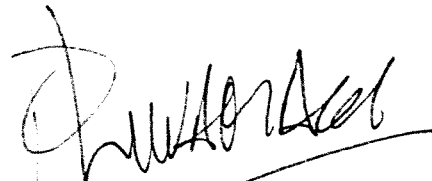
At the 2003 May 06 meeting of the Traffic Safety Committee, a delegation from the Marine Pub, Cold Beer, Wine and Liquor Store located on Marine Drive in the 5700 block appeared to speak to the issue of on street parking within the 5600 and 5700 blocks of Marine Drive, and the potential impact that proposed parking restrictions in the 5600 block of Marine Drive would have on the business in the immediate area.

2.0 BACKGROUND

Arising from the Committee discussion, staff were directed to consult with local businesses concerning short term parking in the area and specifically to determine whether there is a consensus of preference for time limits for the parking along the north side of Marine Drive adjacent to Glenwood Elementary School. Staff also carried out a field review of the parking regulations to determine whether the available on-street parking could be expanded.

3.0 CONCLUSION

Based on comments of the local business owners it appears that a 2 hour time limit in effect between 7:00 am and 7:00 pm would be preferred for on street parking on the north side of Marine Drive. The field review confirmed that this parking area could be expanded to accommodate up to 3 more vehicles. The proprietor of the convenience store also suggested that short duration (15 min) parking on the south side of Marine Drive near his store would be helpful. We propose a 2 vehicle zone directly west of the Gilley Avenue intersection to serve the local convenience store and café. The attached Diagram #1 provides an illustration of the existing and proposed parking restriction along this section of Marine Drive.



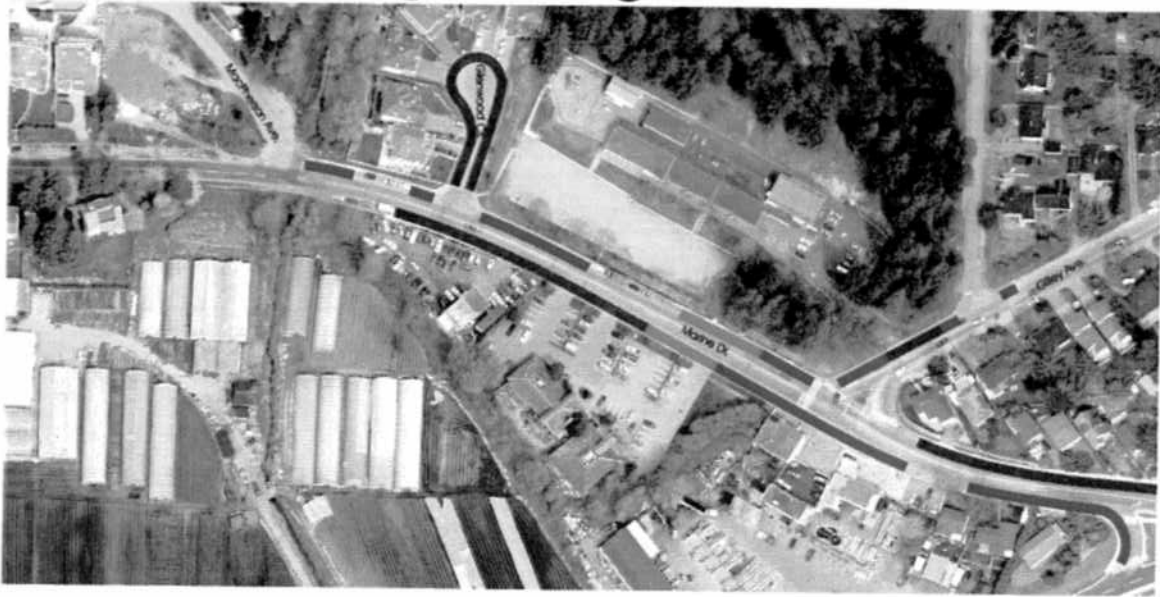
P. Liivamagi, P. Eng.
ASST. DIRECTOR ENGINEERING,
TRAFFIC & ENG. SYSTEMS

AE:
Attach.

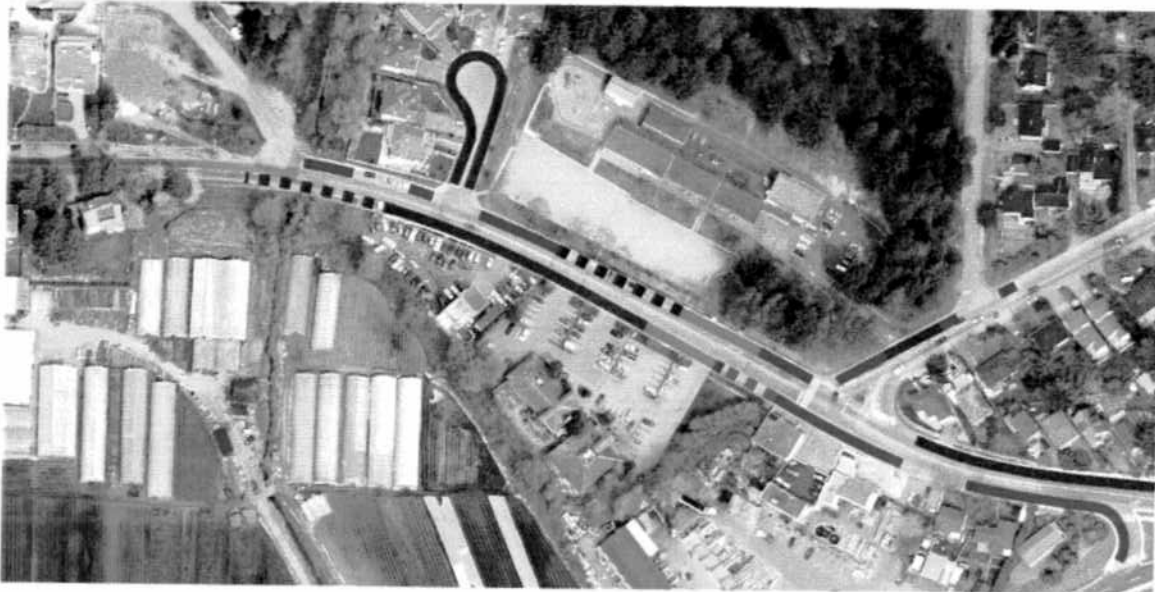
cc: City Manager



Existing Parking Restrictions



Proposed Parking Restrictions



- No Parking Zone
 No Stopping Zone
 No Stopping Bus Zone
- Proposed No Parking Zone
 Proposed 15 min Parking
 Proposed 2 Hr Parking (7am - 7pm)

Report: Time Limited Parking - 5600 and 5700 Marine Drive



Diagram #1
Existing & Proposed Parking Restrictions on Marine Drive

DRAWN BY: AKE

SCALE: NTS

APPRV'D BY: PL

DATE: 19/12/01

