

CITY OF BURNABY

G

TRAFFIC SAFETY COMMITTEE

*HIS WORSHIP, THE MAYOR  
AND COUNCILLORS*

**SUBJECT: SCHOOL CROSSWALK ON SUSSEX AVENUE AT WATLING STREET**

RECOMMENDATION:

1. **THAT** Council forward a copy of this report to Gerald J. Herkel, Executive Director, St. Michael's Centre, 7451 Sussex Avenue, Burnaby, B.C. V5J 5C2.

REPORT

The Traffic Safety Committee, at its meeting held on 2003 March 04, received and adopted the *attached* report responding to correspondence from St. Michael's Centre regarding parking in violation of marked crosswalk regulations intended to maintain visibility between motorists and pedestrians.

The Committee requested that staff meet with St. Michael's Centre to help resolve some of the concerns relative to receiving/loading.

Respectfully submitted,

Councillor D. Evans  
Chair

Councillor N. Volkow  
Vice Chair

Councillor L. Rankin  
Member

COPY: CITY MANAGER DIRECTOR ENGINEERING
--

City of Burnaby

INTER-OFFICE COMMUNICATION

**TO:** TRAFFIC SAFETY COMMITTEE

**DATE:** 2003 02 20

**FROM:** ASST. DIRECTOR ENGINEERING,  
TRAFFIC & ENGINEERING SYSTEMS

**SUBJECT:** SCHOOL CROSSWALK ON SUSSEX AVENUE AT WATLING STREET

**PURPOSE:** To respond to correspondence from St. Michael's Centre regarding parking in violation of marked crosswalk regulations intended to maintain visibility between motorists and pedestrians.

---

**RECOMMENDATION:**

1. **THAT** a copy of this report be sent to Gerald J. Herkel, Executive Director, St. Michael's Centre, 7451 Sussex Avenue, Burnaby BC, V5J 5C2.

**R E P O R T**

**1.0 INTRODUCTION**

Appearing on the 2003 February 04 agenda of the Traffic Safety Committee was correspondence from the St. Michael's Centre concerning the recent installation of a school crosswalk on Sussex Street at the Watling Street intersection and the impact that parking restrictions associated with this crossing have had on the operations of the Centre. The Committee requested a staff report on the concern including the detail of enforcement action.

**2.0 BACKGROUND**

In October 2002, staff received correspondence from the South Slope Elementary and BC Provincial School for the Deaf requesting the installation of a marked school crosswalk at the Sussex Avenue and Watling Street intersection. The attached Diagram #1 provides an illustration of the area.

Given the existing marked school crosswalk on Sussex Avenue one block to the south at Irmin Street, staff conducted a study at this location in order to verify the extent of pedestrian demand. The results of this study confirmed the need for a crosswalk and have been summarized in the table below:

<b>TIME</b>	<b># of Child Pedestrians</b>	<b># of Adult Pedestrians</b>
8:30 - 9:00	31	13
9:00 - 9:30	2	4
2:30 - 3:00	8	9
3:00 -3:15	20	5

In accordance with practice, prior to the installation of the crosswalk, staff prepared and distributed correspondence to those property owners who would be directly impacted by the proposed crossing and associated stopping restrictions. In the case of the Sussex / Watling crosswalk, a letter and diagram was sent to St. Michael's Centre in the first week of November 2002. As no objection was expressed for the proposed crosswalk and parking restrictions by all those contacted, staff requisitioned the installation of the school crosswalk on December 12, 2002, with the works being completed on December 18, 2002.

As is illustrated in Diagram #2, a portion of the parking restrictions along the west side of Sussex Avenue adjacent to St. Michael's Centre was changed from a 'No Parking' to 'No Stopping' zone as part of the crosswalk installation. The 'No Stopping' restrictions installed conform with the minimum requirements of the BC and National "Pedestrian Crossing Control Manual".

In January 2003 staff were contacted by representative of St. Michael's Centre after the operator of the Centre's passenger bus which was parked in a 'No Stopping' zone on Sussex Avenue received a ticket while loading centre patrons for a day outing. Subsequently staff met on site with Centre officials to discuss the matter and, hopefully, resolve the issue.

As a result of this meeting, it was agreed that in future the Centre's bus could be stationed within the designated 'No Parking' zone directly south of the 'No Stopping' zone (see Diagram #2) provided that they were actively loading or unloading passengers.

### 3.0 PARKING VIOLATIONS ISSUED

In order to gain a clear understanding of the events and actions associated with the parking violations noted by the correspondent, staff have discussed the details with the issuing Bylaw Officers.

In the case of the vehicle registered to St. Michael's Centre, it was parked facing south directly past the newly installed school crosswalk at Watling Street while loading passengers. The delivery vehicle received a ticket (2003 January 9) for parking in a southbound direction immediately in front of the school crosswalk at the Irmin Street intersection in order to unload goods destined for St. Michael's Centre. The attached Diagram #3 illustrates the location of both vehicles when the parking violations were issued.

We note that enforcement staff are sensitive to the issue of child pedestrian safety at schools but seek enforcement through willing compliance and endeavour to warn drivers rather than issuing tickets. In this case, prior warnings to vehicle operators had not resulted in compliance and tickets were issued.

### 4.0 DISCUSSION / CONCLUSION

The marked crosswalks associated on Sussex at South Slope Elementary School have been installed to meet the safety needs of child pedestrians. However, they are used by others and it is important that the visibility requirements addressed by the 'No Stopping' regulations are complied with. Staff have offered to provide a landing pad for the seniors' bus immediately south of the 'No Stopping' zone. It is noted that this will increase the walking distance to the bus by the 15m length of the 'No Stopping' zone farside of the crosswalk.



P. Liivamagi, P. Eng.  
ASST. DIRECTOR ENGINEERING,  
TRAFFIC & ENG. SYSTEMS

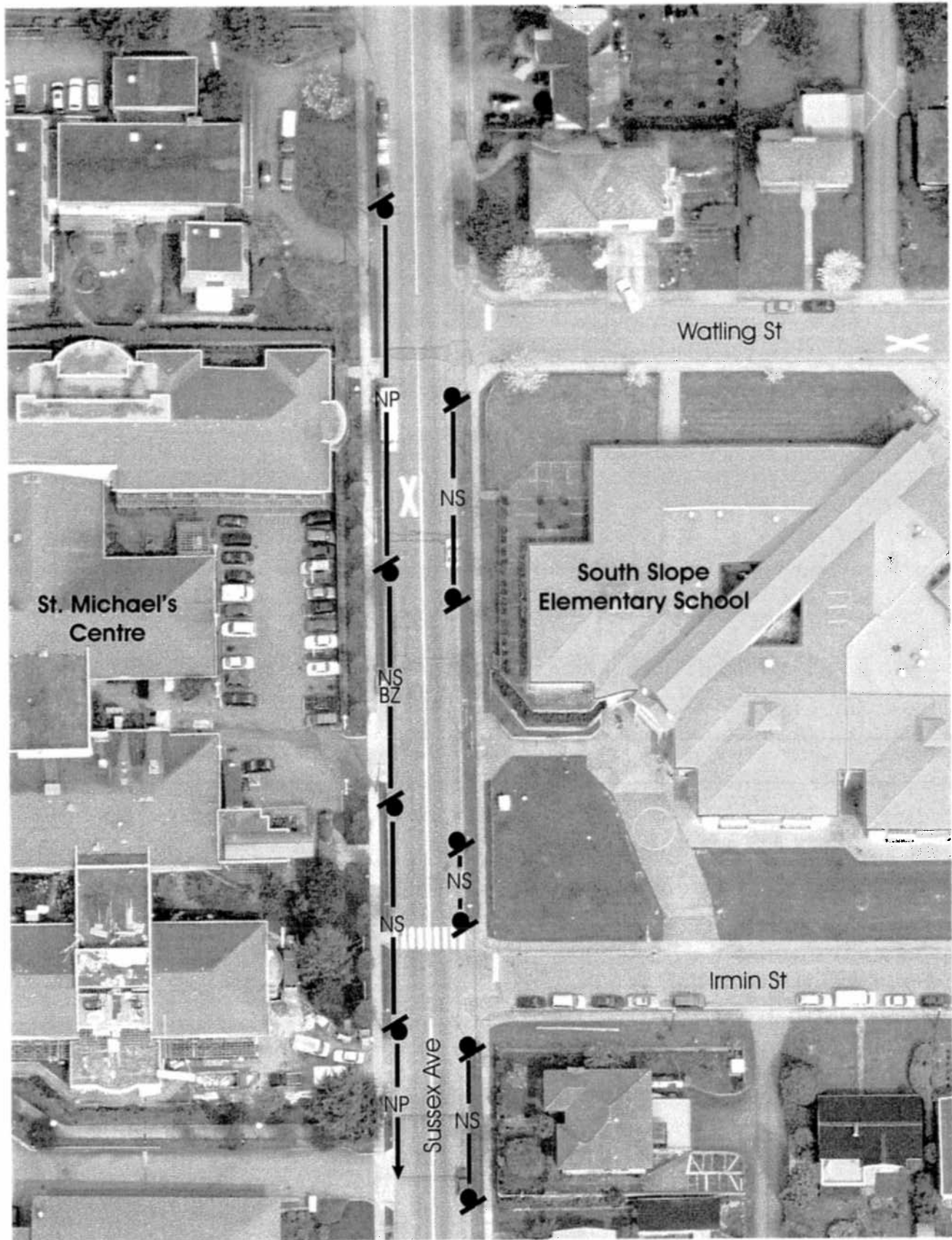
AE:  
Attach.

cc: City Manager

**APPENDIX C**

**CHRONOLOGY OF EVENTS ASSOCIATED WITH THE INSTALLATION OF A  
SCHOOL CROSSWALK ON SUSSEX AVENUE AT WATLING STREET**

<b>DATE</b>	<b>ACTION</b>
Oct 23, 2002	Request from South Slope Elementary and BC Provincial School for the Deaf for the installation of a marked school crosswalk at the Sussex Avenue and Watling Street intersection
Nov 6, 2002	Pedestrian survey conducted
Nov 8, 2002	Letter sent to St. Michael's Centre (Exhibit #1)
Dec 12, 2002	Request to install school crosswalk
Dec 18, 2002	Crosswalk installation and parking restriction changes completed by City forces.
Jan 3, 2003	Parking violation issued to bus registered to St. Michael's Centre for stopping in a designated 'No Stopping' zone associated with the school crosswalk at Watling Street.
Jan 8, 2003	Staff meet with officials from St. Michael's Centre to discuss the changes to parking restrictions associated with the school crosswalk
Jan 9, 2003	Parking violation issued to commercial vehicle waiting to unload goods at St. Michael's Centre for stopping in a designated 'No Stopping' zone associated with the school crosswalk at Irmin Street .



76



## Parking Restrictions Prior to Crosswalk Installation

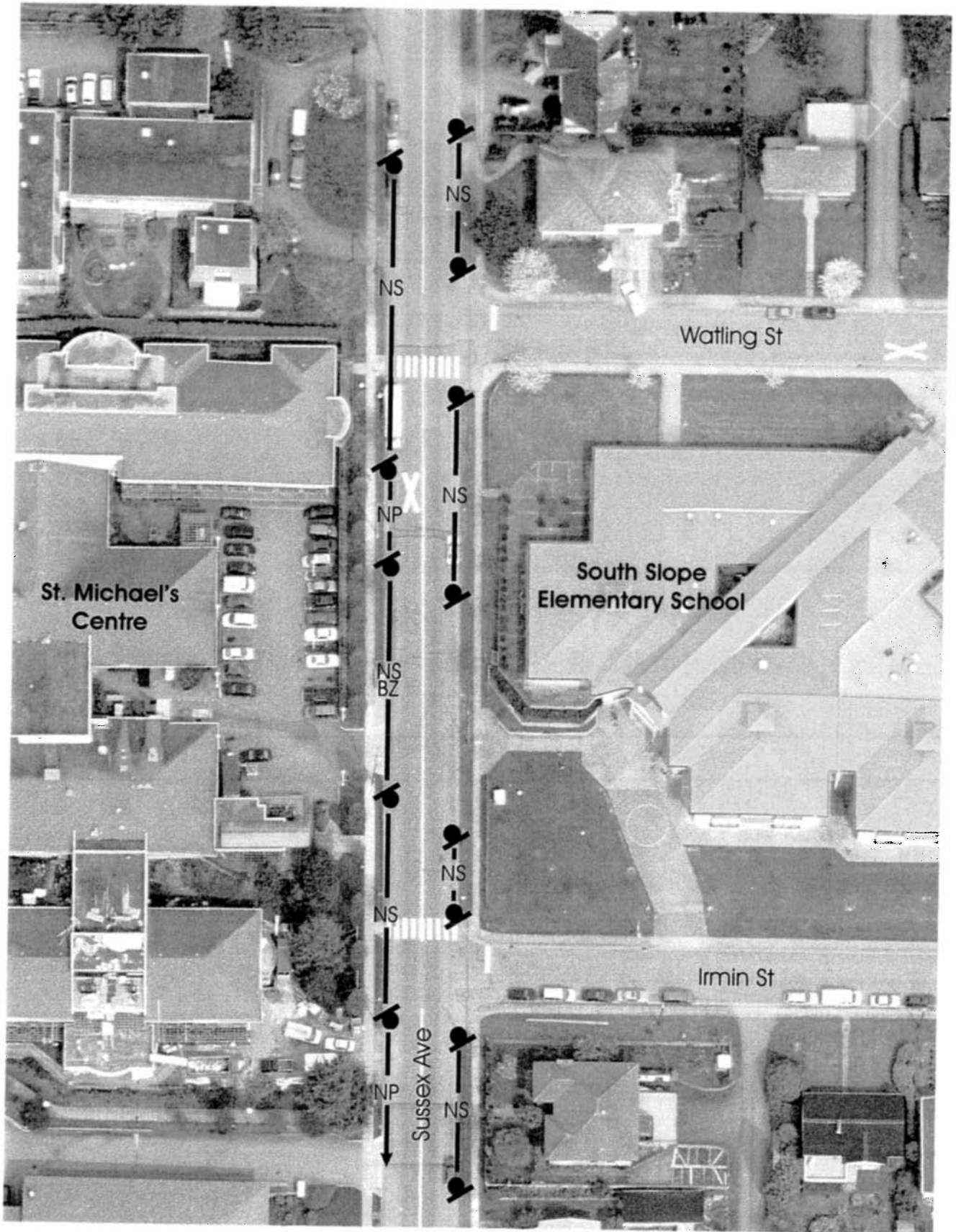
DRAWN BY: AKE

SCALE: NTS

APPRV'D BY: PL

DATE: 05/02/03

Diagram #1



Existing Parking Restrictions 77  
on Sussex Ave.

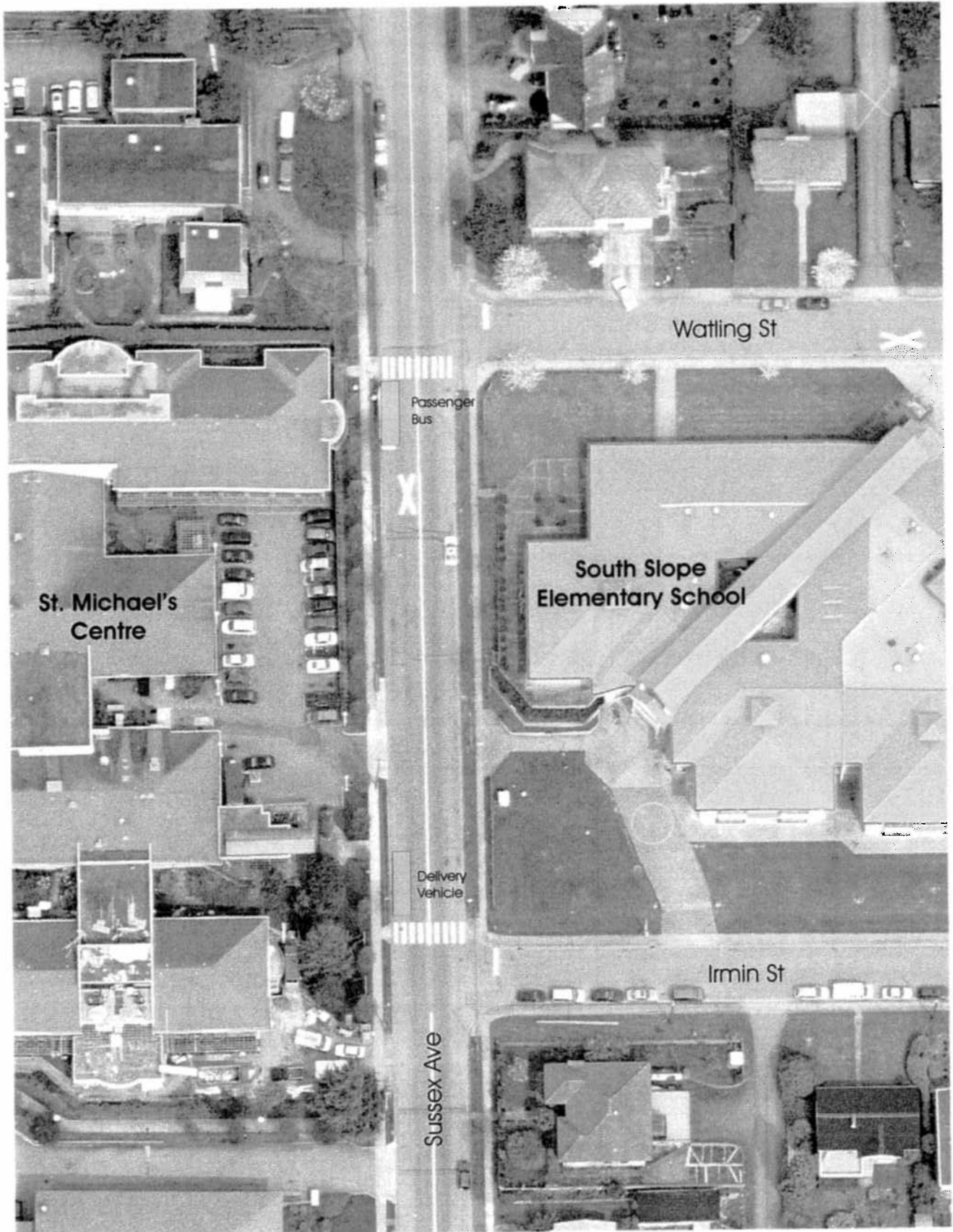
DRAWN BY: AKE

SCALE: NTS

APPR'V'D BY: PL

DATE: 05/02/03

Diagram #2



78



Location of illegally parked vehicles

DRAWN BY: AKE

SCALE: NTS

APPR'V'D BY: PL

DATE: 05/02/03

Diagram #3