

CITY OF BURNABY
COMMUNITY HERITAGE COMMISSION

C

*HIS WORSHIP, THE MAYOR
AND COUNCILLORS*

DEER LAKE PARK HERITAGE
BUILDING INTERPRETIVE PLAQUES

RECOMMENDATIONS:

1. **THAT** Council forward this report to the Parks, Recreation and Culture Commission for their approval of the design, installation and siting and wording of five interpretive signs in Deer Lake Park.
2. **THAT**, subject to concurrence of the Parks, Recreation and Culture Commission, Council approval be given for the design, content and budget of the five proposed interpretive signs.
3. **THAT**, subject to concurrence of the Parks, Recreation and Culture Commission, Council approve the expenditure of up to \$2,500 from the Community Heritage Commission 2000 plaque budget to cover additional costs to design and install the new interpretive signs.
4. **THAT** Council send a letter of thanks to the Burnaby Historical Society for their generous donation of \$3,000.00 towards the production and installation of the interpretive signs.

REPORT

The Community Heritage Commission, at its meeting held on 2000 April 06 received and adopted the attached report providing design specifications and cost estimates to install five (5) interpretive signs, funded by the Burnaby Historical Society, for the Ceperley, Mather and Anderson designated heritage sites in Deer Lake Park.

The Commission agreed that the proposed signs will add a significant new level of public awareness of the unique designated heritage buildings in Deer Lake Park in the vicinity of the Arts Centre and form a new attraction for residents and visitors.

Respectfully submitted,

Councillor Celest Redman
CHAIR

Councillor Dan Johnston
VICE CHAIR

Copy: City Manager Director Planning and Building Director Parks, Recreation and Cultural Services Director Finance

TO: COMMUNITY HERITAGE COMMISSION 2000 March 28

FROM: DIRECTOR PLANNING AND BUILDING

SUBJECT: DEER LAKE PARK HERITAGE BUILDINGS INTERPRETIVE SIGNS

PURPOSE: To provide the design specifications and cost estimates to install five interpretive signs funded by the Burnaby Historical Society for the Ceperley, Mather and Anderson designated heritage sites in Deer Lake Park.

RECOMMENDATIONS:

1. **THAT** approval be given for the design, content and budget of the five proposed interpretive signs.
2. **THAT** the Commission request Council to approve the expenditure of up to \$2,500 from the CHC 2000 plaque budget to cover additional costs to design and install the new interpretive signs.
3. **THAT** the Commission request Council to forward this report to the Parks and Recreation Commission for their approval of the design, installation and siting and wording of five interpretive signs in Deer Lake Park.
4. **THAT** the Commission request Council send a letter of thanks to the Burnaby Historical Society for their generous donation of \$3,000.00 towards the production and installation of the interpretive signs.

REPORT**1.0 Background**

At its 1999 September 03 meeting, the Community Heritage Commission approved in concept the offer of the Burnaby Historical Society to fund interpretive signs for the designated heritage buildings

in the Arts Centre precinct of Deer Lake Park. A second report on this matter was brought forward on 2000 February 03. At that time further information regarding the design and wording of the signs was requested.

Staff have completed the design of the plaques and have reviewed the report with Parks, Recreation and Cultural Services Department staff. This report outlines the new interpretive plaques in detail, provides text, graphic design, a cost estimate and identifies the proposed locations for the five plaques.

2.0 Interpretive Signs

2.1 Purpose

These interpretive signs will help in telling the story of Deer Lake and the people who lived here. They will be utilized for the heritage interpretive tours and will be sufficiently detailed for self tours. The signs will support the educational objectives of the CHC.

2.2 Design

The proposed interpretive signs are similar to those on the City's Trans-Canada Trail in North Burnaby. These signs employ the use of a full colour laminate on an aluminum base which is protected by lexan mounted on a cedar standing frame (see attachment #1).

The five proposed interpretive signs will outline the history and architecture of the designated heritage buildings in the Arts Centre Precinct. The five signs will include the following:

- W.J. Mathers House "Altnadene"
- R.F. Anderson House
- H.T. Ceperley Mansion "Fairacres"
- "Fairacres" Chauffeur's Cottage and Barn
- "Fairacres" Steam Plant and Root House

Each interpretive sign will be designed with a unified colour scheme and banner titled Deer Lake Park - Heritage. The unified appearance will assist park visitors to easily identify the markers from a distance. Future heritage site markers throughout the park may also adopt this design in order to form a consistent interpretation system.

The signs will include credits for sponsorship to both the City of Burnaby - Community Heritage Commission and the Burnaby Historical Society using accompanying logos.

A full size colour paper sample of the proposed signs will be presented for the Commission's

consideration at their 2000 April 06 meeting. The finished size is 24" x 30". A reduced photocopy sample of each sign is attached.

2.3 Project Budget

The budget for this project has been established based on the experience of the Trans-Canada Trail interpretive signs. The research, text and graphic design for the plaques has been provided by the City's planning staff as part of the City's heritage program.

The Burnaby Historical Society's \$3,000 donation will be used to cover the majority of the cost of the signs. The production of the sign image will be contracted to a private firm specializing in this work. The fabricating of the supporting cedar frames, lexan covers and installation within the park will be done by the City staff.

Total costs will exceed the amount donated by the Society. In order to cover the balance of the expenses, it is proposed that up to \$2,500 be made available from the Heritage Commission's budget to ensure the successful completion of this important interpretive project.

Estimated Project Budget

A) **Costs:**

Item	Quantity	Unit Cost	Sub-Total	Totals
24"x 30" interpretive sign (Artcraft)	5	\$ 240	\$1,200	
Interpretive sign structure/frame/cover	5	650	3,250	
Installation	5	120	600	
<i>Subtotal</i>				\$5,050
Taxes (GST & PST) and Delivery Charges		450		
<i>Subtotal (* Estimate only)</i>				450
Total Funds Required:				5,500

B) **Sources of Funds:**

Burnaby Historical Society Donations	3,000
Community Heritage Commission Budget	2,500
Total Budget:	\$5,500

2.4 Maintenance Costs

The Community Heritage Commission has received an annual budget of \$5,000 to implement the City's heritage plaque program. In the past the Commission has installed a series of plaques to identify and interpret designated heritage building and historic sites throughout the City. This fund has also been used to maintain this series of plaques which have from time to time required replacement. This new set of interpretive signs, although funded by donation, can be maintained through the Commission's annual budget.

2.5 Sign Location

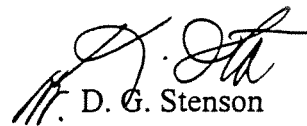
The interpretive signs will be sited in Deer Lake Park adjacent to well used pedestrian corridors and near to the main entrances of the heritage buildings (see attachment #2). These sites have been reviewed with Parks Department staff.

The Parks, Recreation and Culture Commission has the authority to approve the location of all signs within Burnaby parks. Following established procedure the Parks Commission will be requested to review this report for their approval of this project which is consistent with the plan for Deer Lake Park.

3.0 **Summary**

The donation of \$3,000 by the Burnaby Historical Society to fund the production of these interpretive signs presents a new opportunity to pursue a worthy heritage plaque project of the Community Heritage Commission. A CHC contribution of \$2,500 is required to ensure the successful completion of this first series of interpretive signs for Deer Lake Park.

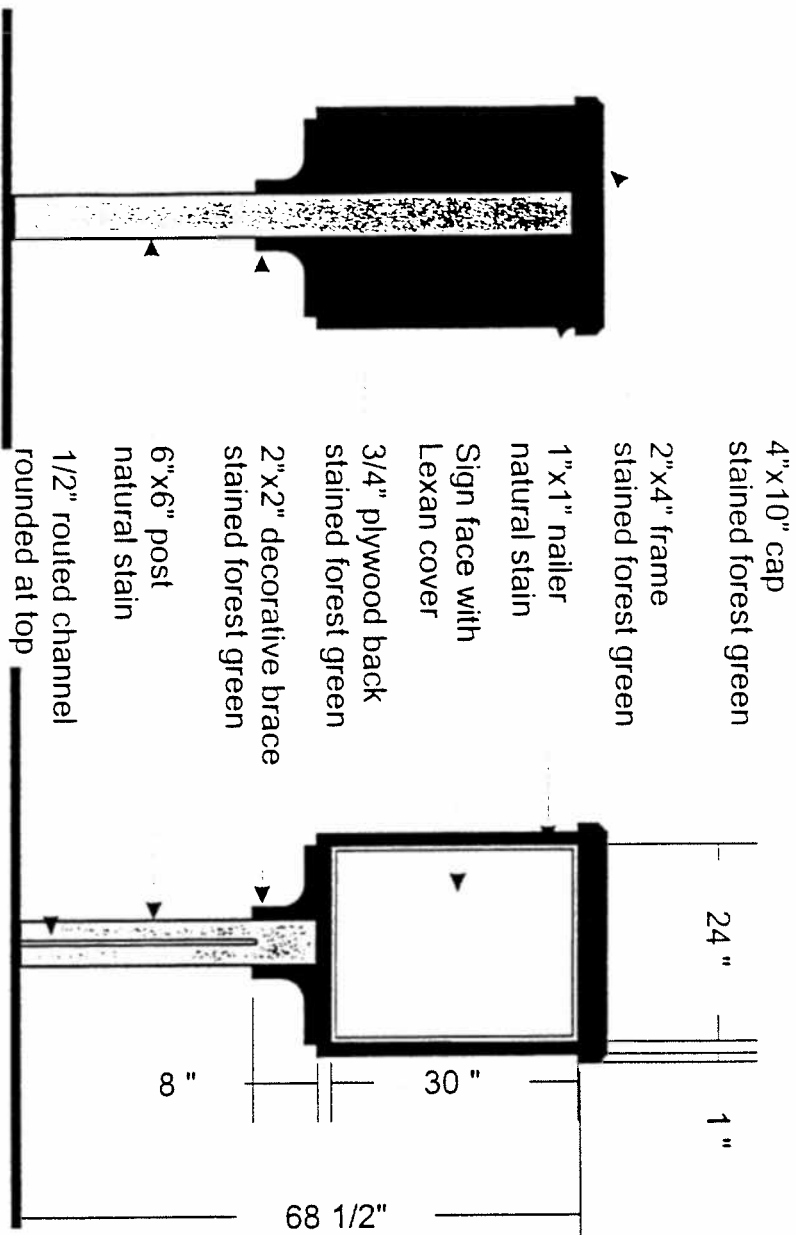
These signs will add a significant new level of public awareness of the unique designated heritage buildings in Deer Lake Park in the vicinity of the Arts Centre and form a new attraction for residents and visitors. In addition, this interpretation sign project is intended to be a "first step" in the development of a comprehensive interpretation program for other heritage resources in the park.



D. G. Stenson
Director Planning and Building

BR:JW:hr
Atts.

cc: Director Parks, Recreation & Cultural Services
Director Finance



REAR VIEW

FRONT VIEW

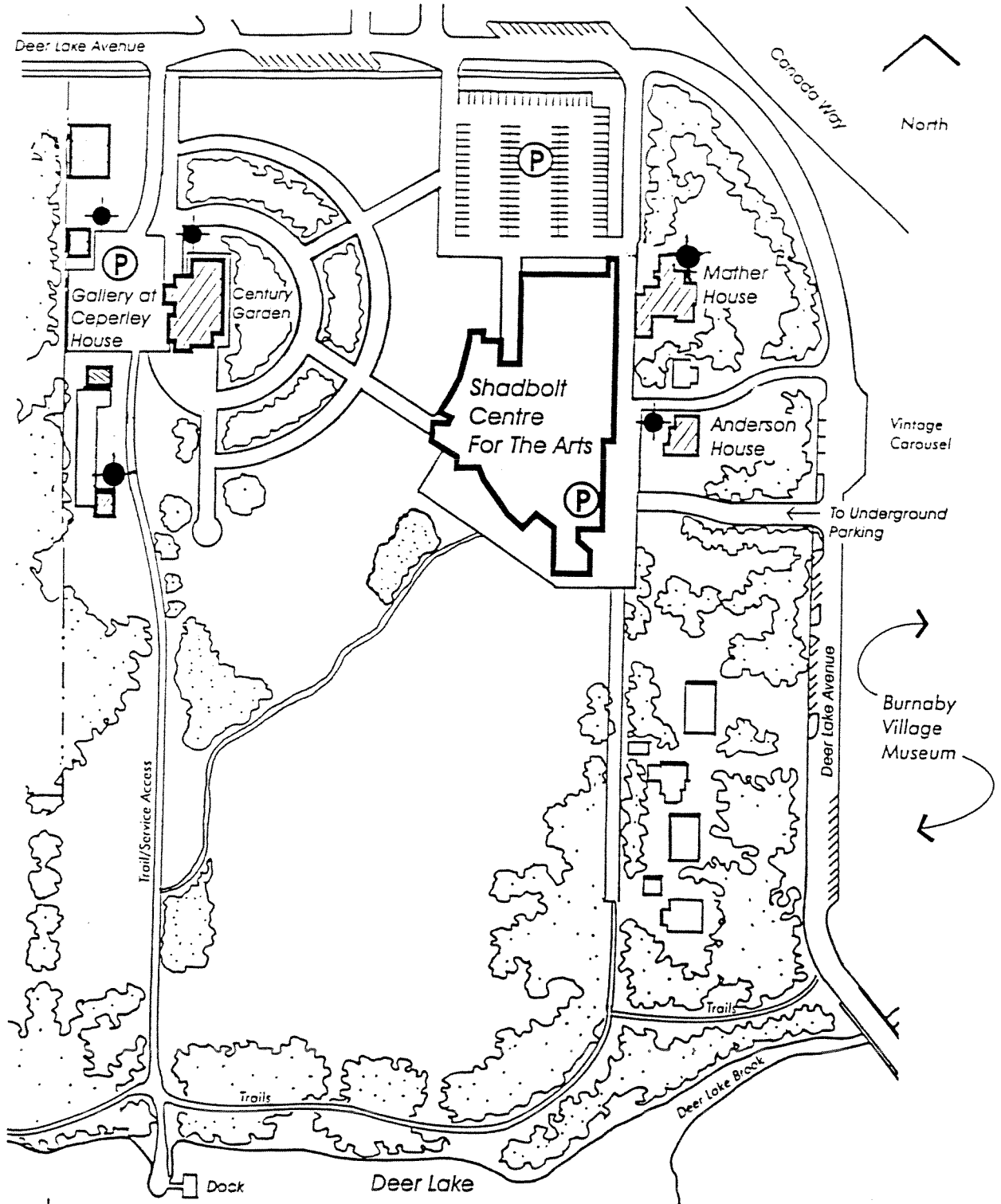
SIDE VIEW



DEER LAKE PARK
HERITAGE INTERPRETIVE SIGN

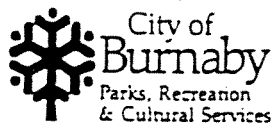
Dwg. # O.P.
 Date: March, 2000
 Scale: 1/4" = 1'-0"
 Drawn by: JE

D:\Data\Deer Lake\sign1.cdr



● Proposed Location Of Interpretive Signs

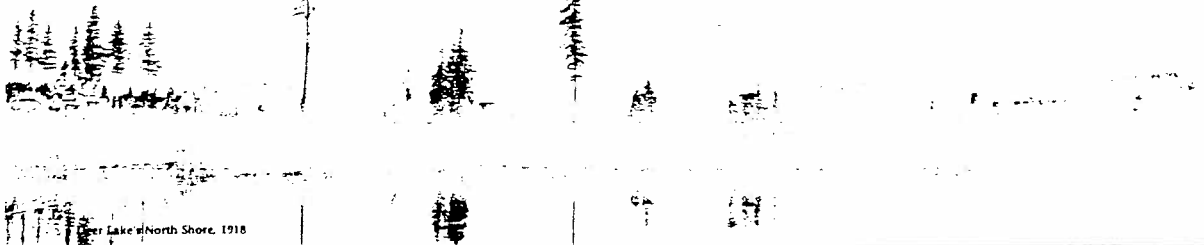
D:\data\deer lake\ Arts Centre
Precinct1.cdr



**Arts Centre Site Plan
Proposed Location of
Interpretive Signs**

Dwg.# O.P. 37-1-150
Date: Jan. 2000
Scale: nts
Prepared By: HD

DEER LAKE PARK HERITAGE



R.F. Anderson House



The Anderson House - front view



The Anderson House - rear view



The Anderson House - side view

History

Robert Fenwick Anderson and his wife Bessie purchased their lots in the "Deer Lake Crescent" subdivision shortly after the Mathers but rushed their house to completion first. In 1912 the newspaper announced that this "new \$10,000 mansion was well on its way to completion." Mr. Anderson was a partner in the New Westminster Hardware firm of Anderson and Lusby. The house incorporated many of the latest mechanical and decorative features then available on the market. After World War I, and the death of their son Goldie Anderson, the Anderson's sold the house and many different owners came and went.

In 1939 the house was purchased by the Benedictine Monks and the house became the home to Grey Nuns from Ontario who were sent to British Columbia to assist with the operation of the Seminary of Christ the King. In 1967 the Anderson House was purchased by Burnaby to be used as part of the arts center and in 1992 was designated as a city heritage site. Currently, the building is used as administration offices.

Architecture

The architect for Mr. Anderson's Deer Lake home was Frank W. Macey. The house is typical of many built throughout Greater Vancouver using the Arts and Crafts Style, but Macey's signature style is evident through the use of Medieval English elements and an overall attention to detail that is remarkable. The exterior of the house still retains most of its original finishes and features. However, a few alterations have been made to the front verandah including the removal of two original staircases and the installation of a modern concrete stair. The front door and a number of windows have also been removed or altered.



Burnaby Heritage Site

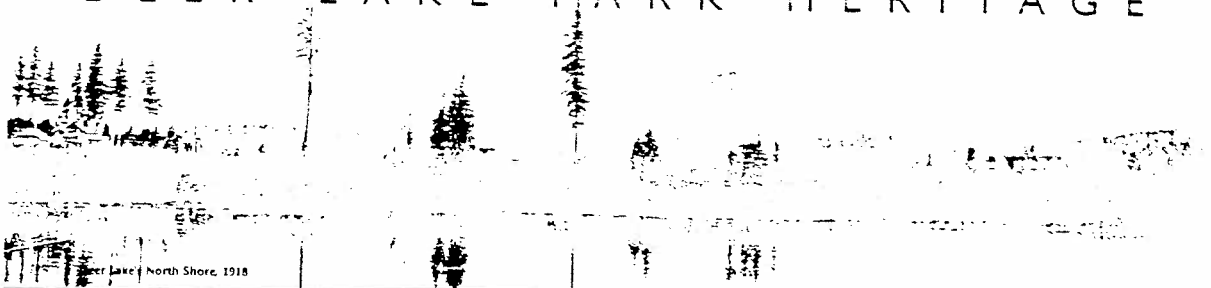
This property was purchased in 1967 by the Municipality of Burnaby for use as part of a new civic arts centre. Its status as a civic heritage property was recognized through its designation through By-law 5807 passed by Council on November 9, 1992.



Funding for this sign provided by the Burnaby Historical Society in cooperation with the Burnaby Community Heritage Commission



DEER LAKE PARK HERITAGE



Deer Lake, North Shore, 1918

W.J. Mathers House "Altnadene"



The Mathers family pose with their new home, 1912

History

William J. Mathers was born at St. Helens, Ontario in 1862 and came to New Westminster as a boy of fourteen. He began his business career in a general store and through "the force of his ability, energy and enterprise," became the local manager for the Brackman-Ker Milling Company. He met Mary E. Whelen in the parlour of the home of Frederick and Alice Hart, and they were married shortly afterwards. When F.L. Hart created the Deer Lake Crescent subdivision the Mathers used the opportunity to move to Deer Lake to be Hart's neighbors. They purchased the first two blocks of the subdivision on the most prominent corner of the property. The British Columbian newspaper reported in 1912 that foundations were beginning for a "magnificent new home" and the reported cost would be about \$13,000. The Mathers family named their home "Altnadene" which is inscribed on the front granite gate post. The family was active in community activities until the death of William Mathers in 1933 when "Altnadene" was sold.

After being occupied by several different owners, the estate was sold in 1939 to the local Roman Catholic group of Benedictines. "Altnadene" was converted into the Seminary of Christ the King which operated as a school for religious studies until 1953 when it moved to Mission. The institutional use was continued when the Canadian Temple of the Universal Foundation of More Abundant Life converted the house into communal living quarters in 1954. Finally in 1970 the building was purchased by Burnaby for use as part of the Burnaby Arts Centre Complex.



Seminary of Christ the King - Students and Staff, 1939

The Mathers House in 1970 still retained the church steeple addition built circa 1950

Architecture

"Altnadene" was designed by English born and trained architect and Burnaby Lake resident F.W. Macey who had also designed F.L. Hart's Deer Lake home "Avalon". Both homes are examples of the unusual Romanesque Revival Style, rarely executed locally in large residential homes. "Altnadene" is an excellent and rare example of a unique form of this style incorporating a pyramid roof, tower with battlements and a series of arched windows. Typical of grand Edwardian country homes this house was designed with large well-appointed rooms for entertaining guests. Additions to the building were completed in the 1950s during its use as a seminary and again in the 1960s when used as a church. Despite these changes this architectural gem has survived for a future restoration project.



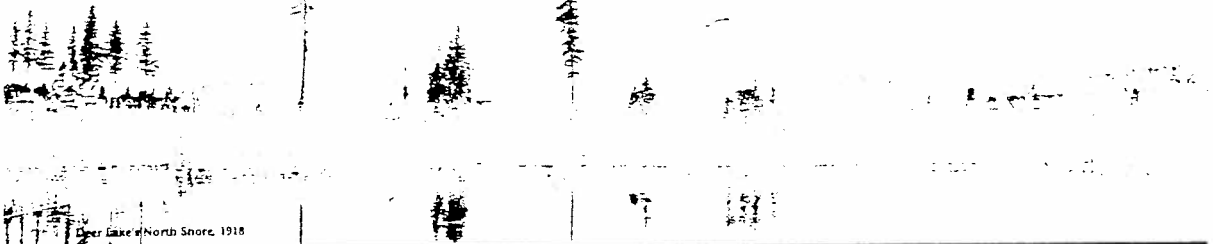
Burnaby Heritage Site

This property was purchased in 1970 by the Municipality of Burnaby for use as part of a new civic arts centre. Its status as a civic heritage property was recognized through its designation through By-law 9807 passed by Council on November 9, 1992.



Funding for this sign provided by the Burnaby Historical Society in cooperation with the Burnaby Community Heritage Commission

DEER LAKE PARK HERITAGE



H.T. Ceperley Mansion "Fairacres"



History

Henry Ceperley arrived in Vancouver in 1886. He was the owner of a real estate firm and his wife, Grace was wealthy in her own right. In 1912 the Ceperleys had this home built on what had been a strawberry farm. The local paper of the day described the estate: "Fairacres, Mr. H.T. Ceperley's palatial home with its fine lawns, terraces, rockeries, greenhouses, pumping station for irrigation, lodge, stables and outbuildings, costing \$150,000 is alone worth a visit to Deer Lake."

In 1917 Grace Ceperley died and left "Fairacres" to her husband with the stipulation that upon his death the estate should be sold and the proceeds used to build a playground for the children of Vancouver in Stanley Park near Second Beach. He followed through with his wife's wish in 1922.



After a succession of owners including Frederick Buscombe, a former Mayor of Vancouver, the house was purchased by the Roman Catholic Church to establish a priory for Benedictine monks. The large property was purchased by the Municipality in 1966 for inclusion in Deer Lake Park when Alan Emmott was Reeve. Emmott was Reeve as Burnaby's project for the 1967 Centennial of Canada. Since that time it has served as Burnaby's Civic art gallery.

Architecture

The mansion at "Fairacres" was designed by Vancouver architect R.P.S. Twizel in the English Arts and Crafts style. The stylistic influence is seen in the use of rustic natural materials such as the cedar shingles and siding, cobblestone foundations and chimneys and the half-timbering in the gable ends. The splendid hand-pegged front door of two-inch thick oak and leaded glass windows attest to the quality of construction. Interior features include English "Medenham" tiled fireplace hearths and the oak staircase. The billiard room has a magnificent gothic inspired trussed ceiling and an oak mantle carved with local flowers and leaves.



Two smaller agricultural buildings (1901-1912) were designed by architect Robert Fripp while Twizel is believed to have designed the cottage and the stables/garage buildings.



Burnaby Heritage Site

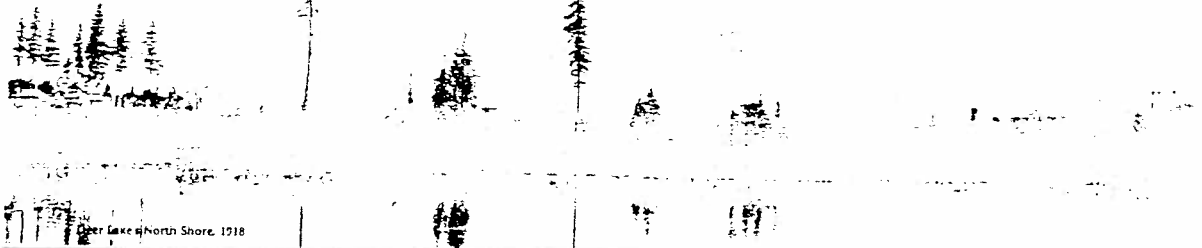
This property was purchased in 1966 by the Municipality of Burnaby for use as part of a new civic arts centre. Its status as a civic heritage property was recognized through its designation through By-law 9807 passed by Council on November 9, 1992.



Funding for this sign provided by the Burnaby Historical Society in cooperation with the Burnaby Community Heritage Commission



DEER LAKE PARK HERITAGE



"Fairacres" Steam Plant

History

This utilitarian building with its prominent smoke stack was constructed in 1908 to house a steam plant which produced heat for several large greenhouses once located here. Historic photographs show the prominent role that this building had in the production of plants for agricultural and horticultural purposes. Every year Fairacres needed the early production of hundreds of young vegetable plants and also the bedding plants for the flower gardens.

Architecture

The building once had a gabled roof which was removed in 1961 and replaced with a flat shed structure. Portions of the granite and concrete foundation walls of the former greenhouse are still in place. Now being used to support the 1960s garage structure these remnants are visible on the east wall. Although the greenhouse and machinery have disappeared this altered structure remains as a unique and rare reminder of the Ceperley estate's agricultural production and an early Burnaby industry.



"Fairacres" Root House

History

Constructed in 1909 this root house is the only known example of its kind remaining in Burnaby. Built into the side hill, its lower door accessed a sizable frost free cellar. It was used for the storage of root crops and fruit from the Fairacres estate's kitchen garden and orchard. Note that the building is located close to the kitchen entrance of the mansion for easy access by the cook and her helper.

Architecture

The flared eaves, roof vent and granite clad foundation are all features of the Arts and Crafts style as executed by architect R. MacKay Fripp. In 1961 the Universal Life Foundation raised the building's roof and added a second floor to provide a storage area with a side access door. A poorly designed garage built in the early 1960s and shrubbery obscures the building. It remains as a unique historic structure and a one of the few reminders of the Fairacres estate's agricultural past.



Burnaby Heritage Site

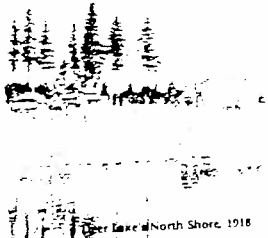
This property was purchased in 1956 by the Municipality of Burnaby for use as part of a new civic arts centre. Its status as a civic heritage property was recognized through its designation through By-law 9807 passed by Council on November 9, 1992.



Funding for this sign provided by the Burnaby Historical Society in cooperation with the Burnaby Community Heritage Commission.



DEER LAKE PARK HERITAGE



Fairacres Cottage

History

This cottage is the only remaining of three built for workers on the estate in 1909. It was originally two small workers cottages that were moved together adjacent to the garage to serve as a Chauffeur's cottage. It was once screened from the mansion by a high latticed fence. However, local gossip had it that Mr. Muttit, hired by the Ceperley's to drive their automobile, refused to move his family in. As a recent arrival from England, Mr Muttit was apparently a socialist that did not want his family to live a "feudal" life on another man's estate. Instead, he built his own home on Sperling Avenue. During recent renovations the refuse from the estate's Chinese workers was found under the cottage and included bottles that once contained "Tiger Whiskey". These items were transferred to Burnaby Village Museum for safe-keeping.

Architecture

The cottage is an excellent example of the Arts and Crafts style and features several well crafted design features such as its mullioned casement windows, broad eaves and shingled exterior. The jerkin gable over the main entrance imitates the thatched roof dormers of cottages found throughout southern England. The architect for the original cottages was Robert MacKay Fripp with the renovations being undertaken by R.P.S. Twizell. Inside the cottage is surprisingly roomy and contained: two bedrooms, a living room, kitchen, pantry and bathroom.



A high latticed fence screens the Chauffeur's cottage from the Ceperley House. Horses shared space in the barn with Mr. Ceperley's automobile.

Fairacres Stables

History

This unique building was constructed in 1911-12 along with the mansion to house the Ceperley's prize collection of horses used for riding and as work horses for agricultural production. A portion of the building was designed for the storage of the Ceperley's automobile.

Architecture

The building is a beautiful example of an Arts and Crafts styled estate building designed by R.P.S. Twizell. The exterior's huge shingled roof and walls are the perfect foil for delicately executed details such as a band of decorative diamond shingles and finely crafted stable doors with hand-forged iron hardware. The building retains a great collection of mullioned windows some of which are glazed with delicately tinted wire glass.

At some point in the building's history the hay loft was enlarged with a large gabled projection. However, the building is remarkable for its survival and the originality of the architectural features both inside and out.



Burnaby Heritage Site

This property was purchased in 1966 by the Municipality of Burnaby for use as part of a new civic arts centre. Its status as a civic heritage property was recognized through its designation through By-law 9807 passed by Council on November 9, 1992.



Funding for this sign provided by the Burnaby Historical Society in cooperation with the Burnaby Community Heritage Commission

