

TO: CITY MANAGER

1998 FEBRUARY 02

FROM: DIRECTOR PLANNING AND BUILDING

SUBJECT: TAYLOR PARK CONSOLIDATION
SUBDIVISION REFERENCE #64/96

PURPOSE: To request Council authority for the dedication of a portion of the Marine Way-10th Avenue Connector and to advise Council of an adjustment to the related subdivision configuration.

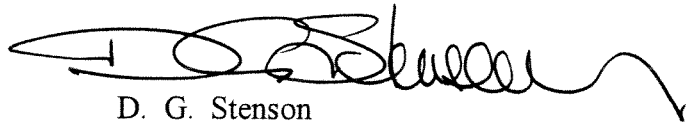
RECOMMENDATION:

1. **THAT** Council authorize the dedication of the road right-of-way for the Marine Way-10th Avenue Connector as shown on Sketch #2.

R E P O R T

On 1997 March 3 Council approved a number of recommendations related to the consolidation of the Taylor Park site (former Stride Avenue landfill). The subdivision configuration was to be as illustrated in Sketch #1 *attached*.

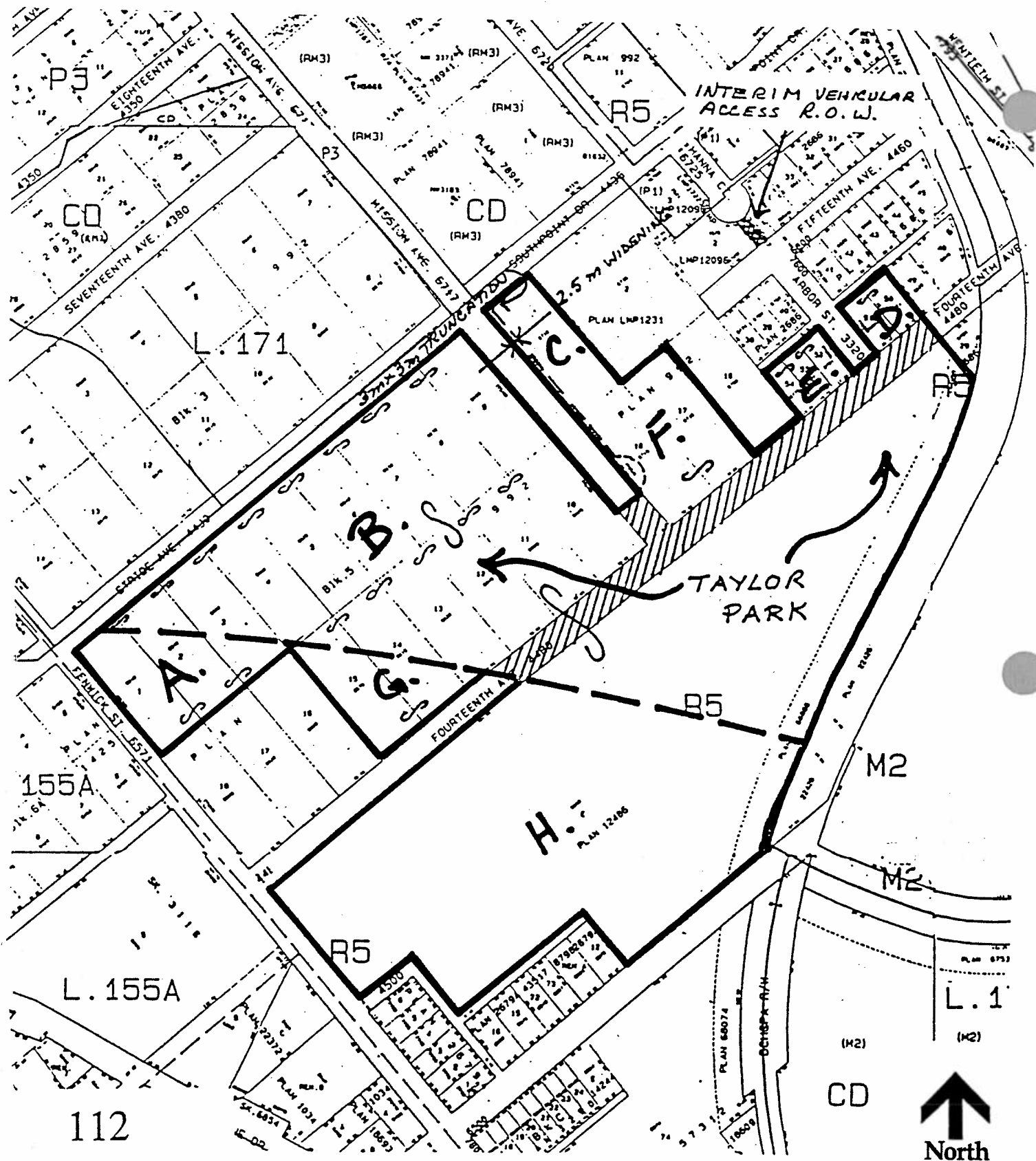
As both Taylor Park and the 14th Avenue Ravine Park have been dedicated as Park, and the right-of-way requirements for the Marine Way-10th Avenue Connector in this area have now been defined, it is desirable to adjust the configuration of the subdivision as illustrated in Sketch #2 *attached*. Council approval of the road dedication for the Connector is requested in this regard.



D. G. Stenson
Approving Officer

RR:gk
Attach

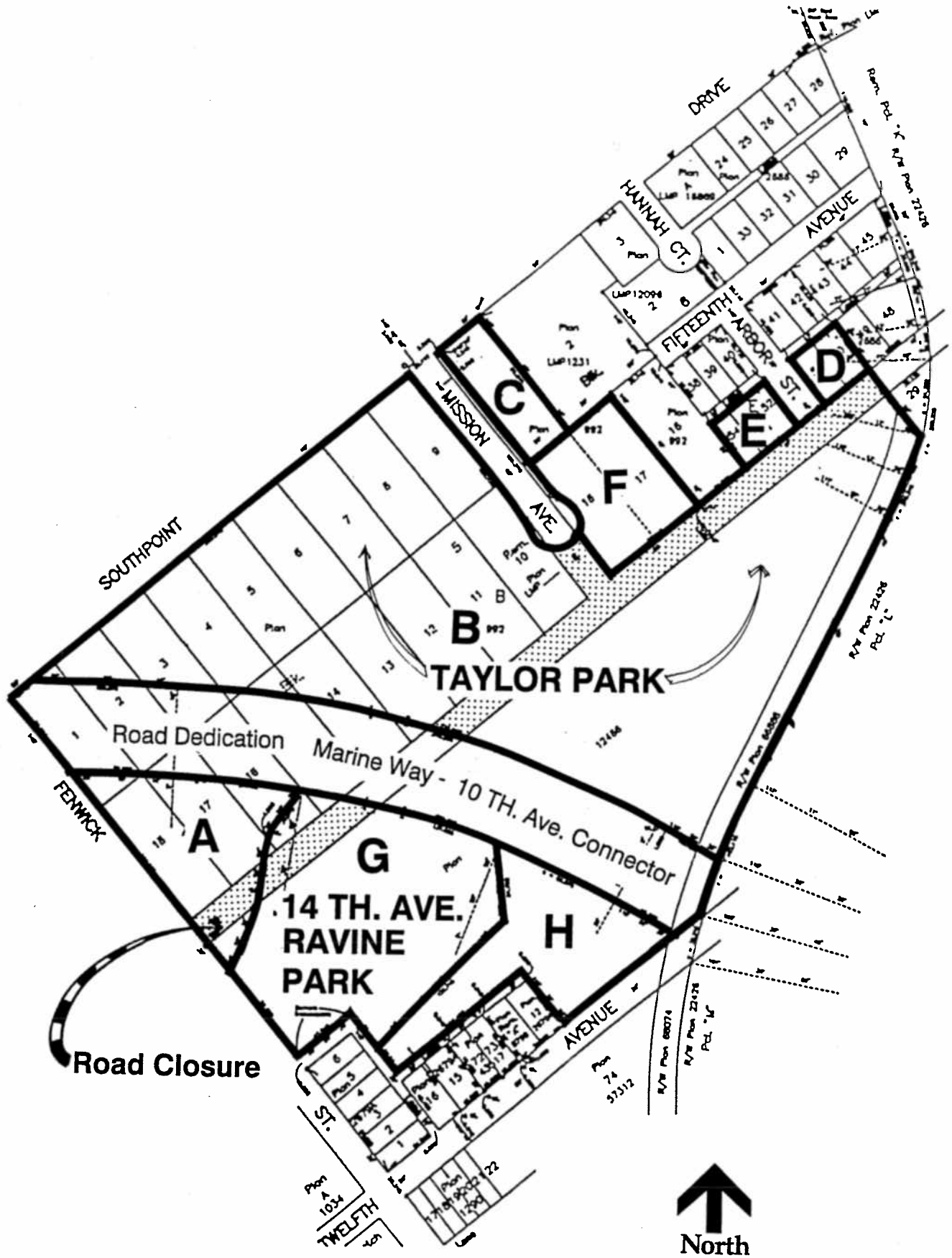
cc: Director Engineering
Director Parks, Recreation & Cultural Services
City Solicitor



Original Configuration
Subdivision Reference #64/96

97.Mar. 03

SKETCH # 1



Adjusted Configuration
Subdivision Reference #64/96

99.Feb. 01

SKETCH #2

