

TO: CITY MANAGER

DATE: FEBRUARY 10, 1998

FROM: CITY SOLICITOR

**SUBJECT: SALE OF CITY PROPERTY
11TH AVENUE SUBDIVISION -
Lots L and M, DL 53, Plan LMP13636
MAYFIELD SUBDIVISION
Lot 6, DL 90, Plan LMP30169**

**PURPOSE: THAT COUNCIL ACCEPT BIDS RECEIVED
FOR 3 RESIDENTIAL LOTS**

RECOMMENDATION:

1. **THAT** the highest bids for the subject lots as indicated in this report be accepted.

R E P O R T

Summary

The subject lots were offered for sale with four valid bids received by the closing date.

On December 15, 1997, as per Item 11, Manager's Report No. 33, Council approved the sale by public tender of the subject lots, plans *attached*.

The lots were advertised as follows:

Vancouver Sun Newspaper

Friday	January 23, 1998
Saturday	January 24, 1998
Friday	January 30, 1998
Saturday	January 31, 1998

The Province Newspaper

Friday January 23, 1998
Sunday January 25, 1998
Friday January 30, 1998
Sunday February 1, 1998


The Now

Sunday January 25, 1998
Wednesday January 28, 1998
Sunday February 1, 1998

Approximately 180 bid packages were distributed.

Bids closed on Thursday, February 10, 1998 at 2.00 p.m. and were opened in public at 2:30 p.m. on the same day. The following bids were received.

BID NO.	LOT	MINIMUM BID	BID AMOUNT
1	6, DL 90	\$285,000	\$291,112
2	L, DL 53	\$155,000	\$155,001
3	L, DL 53	\$155,000	\$155,050
4	M, DL 53	\$155,000	\$155,000

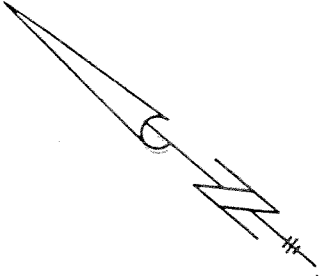

Patricia W. Flieger
City Solicitor

HK:bi
Attach.
cc Director Planning & Building
Director Finance

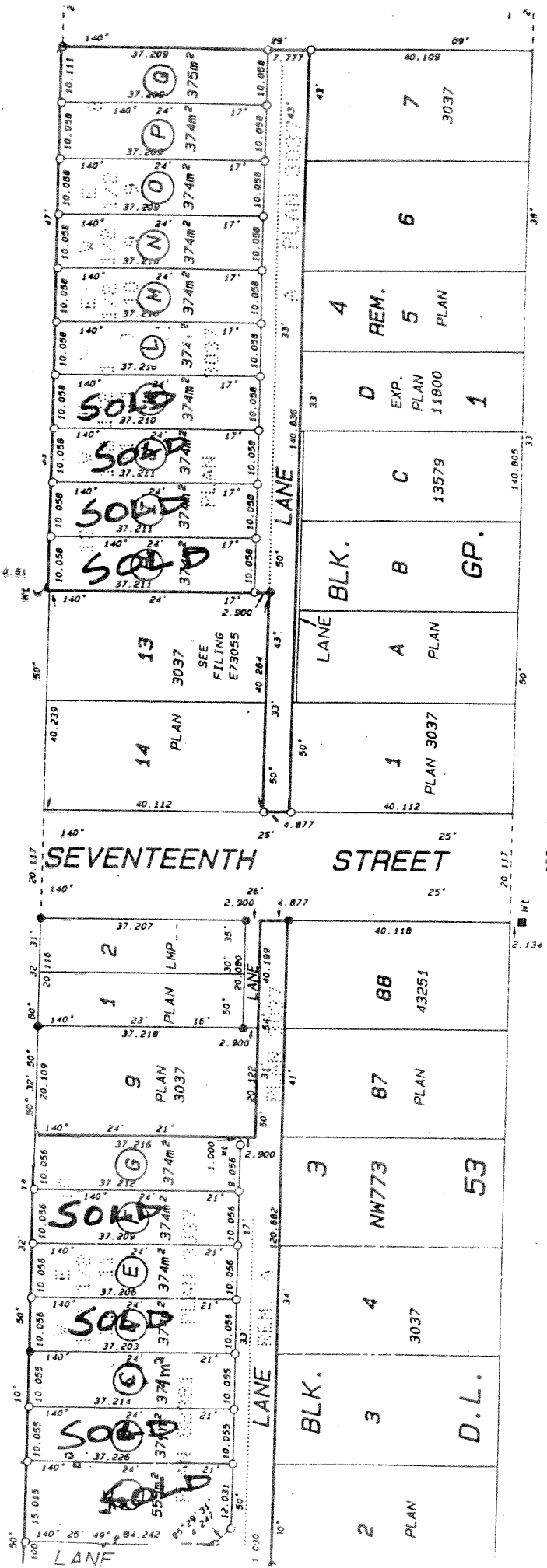
council\crpt\lotsales

PART LUI 9, E1/2 LOT 10, W1/2 LOT 10, E1/2 LOT 11,
 LOT 12, LOT A, BLOCK 4, PLAN 3037;
 LOT 9 HAVING A FRONTAGE OF 33 FEET ON ELEVENTH AVENUE
 LOT 10, BLOCK 4, PLAN 3037;
 LOT 53, GROUP 1, NEW WESTMINSTER DISTRICT

M1 INDUSTRIAL ZONING



ELEVENTH AVENUE

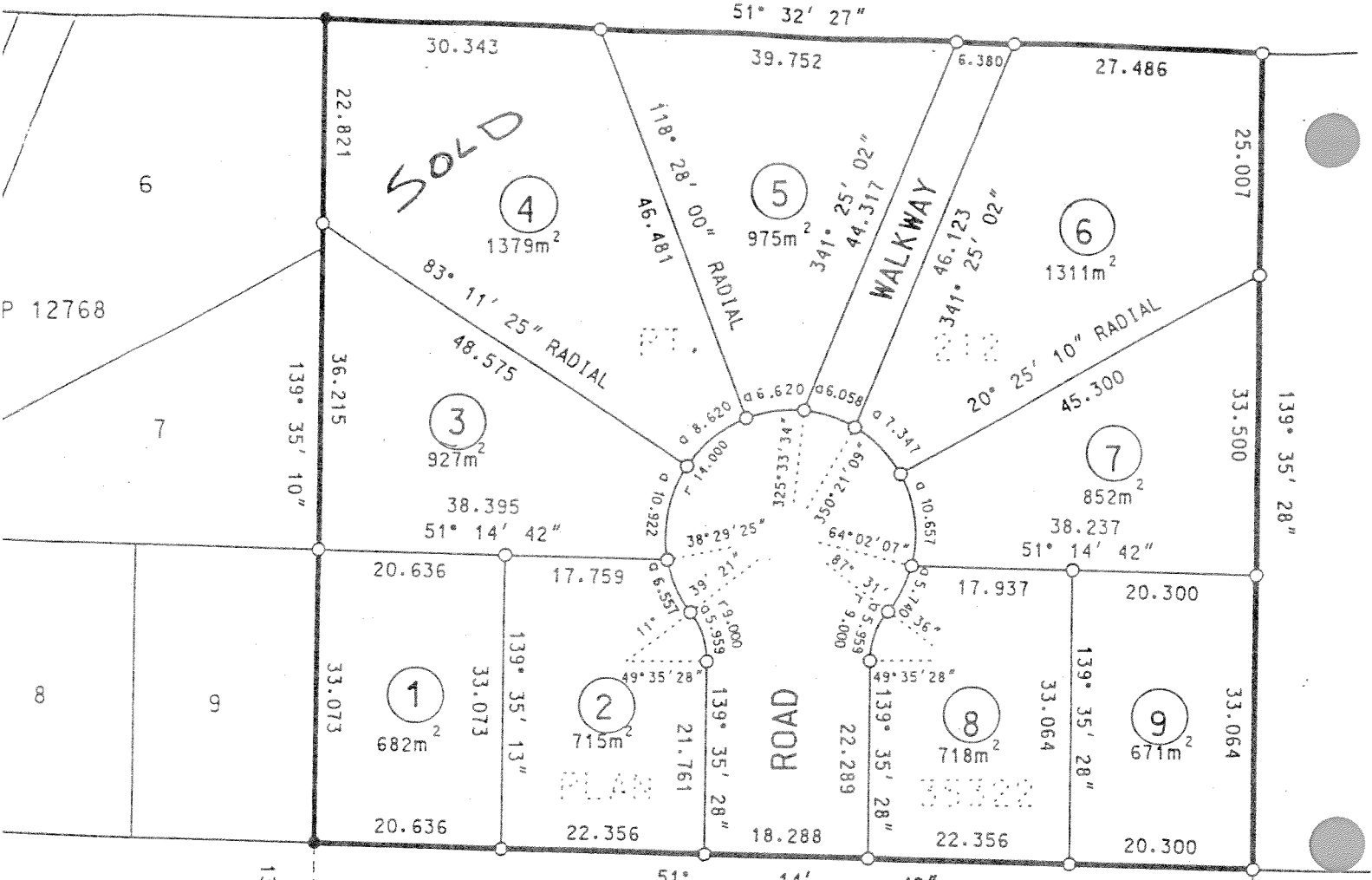


CITY OF BURNABY

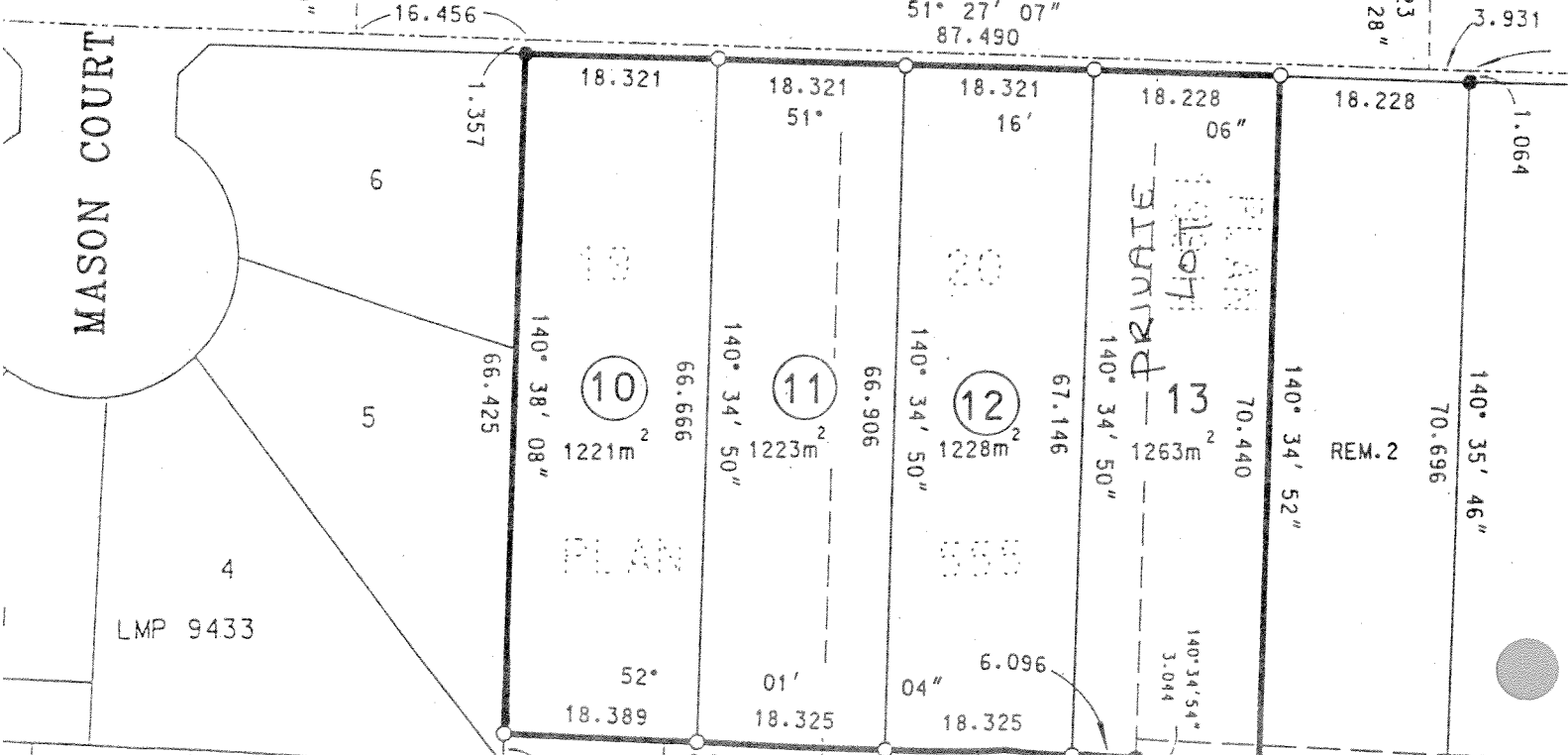
AVENUE

CITY OF BURNABY
CITY OF NEW WESTMINSTER

TENTH



MAYFIELD STREET



P 12768

LMP 9433

PLAN 29	104	PLAN 10044
W 1/2 39	E 1/2 39	W 1/2 40
PLAN 10044	PLAN 10044	PLAN 10044