

TO: CITY MANAGER

DATE: DECEMBER 8, 1997

FROM: CITY SOLICITOR

SUBJECT: SALE OF CITY PROPERTY

Purpose:: To request Council authority to set a minimum bid price for 60 lots situated throughout Burnaby.

RECOMMENDATION:

1. **THAT** the subject lots be offered for sale by public tender in accordance with the conditions of sale outlined in this report.

R E P O R T

The subject lots (see sketches *attached*) were created and serviced by the City in the past two years. Most of them have been offered for sale numerous times at the minimum bid prices noted on the sketches. As can be noted a few lots have been sold. During the past twelve months there has been a lack of demand in the market for single family lots. With the spring and summer building season in mind it is proposed that a reduction in minimum bid prices be approved in order to stimulate sales. The following reductions are proposed.

BURNWOOD LOTS

Lot Nos.	Current Minimum Bid	Proposed Minimum Bid
1, 3 - 11	\$360,000	\$350,000
19	355,000	345,000
24 - 27	345,000	340,000
32	350,000	350,000

MAYFIELD SUBDIVISION

Lot Nos.	Current Minimum Bid	Proposed Minimum Bid
1, 2, 5, 10 - 12	\$280,000	\$270,000
8 and 9	265,000	250,000
3 and 7	285,000	275,000
6	290,000	285,000

11th AVENUE LOTS

Lot Nos.	Current Minimum Bid	Proposed Minimum Bid
L - Q	\$160,000	\$155,000
C, E and G	170,000	165,000

SOUTHVIEW LOTS

Lot Nos.	Current Minimum Bid	Proposed Minimum Bid
2 - 4	\$290,000	\$275,000

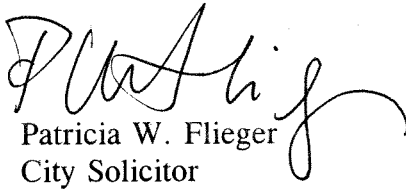
NORTH SEA AVENUE LOTS

Lot Nos.	Current Minimum Bid	Proposed Minimum Bid
25 and 26	\$240,000	\$225,000

CARIBOO HEIGHTS

Lot Nos.	Current Minimum Bid	Proposed Minimum Bid
6	\$270,000	\$260,000
10 and 11	280,000	270,000
85 and 86, Plan 86157 1 - 3, 5, 7 - 9 and 12 - 18	275,000	265,000

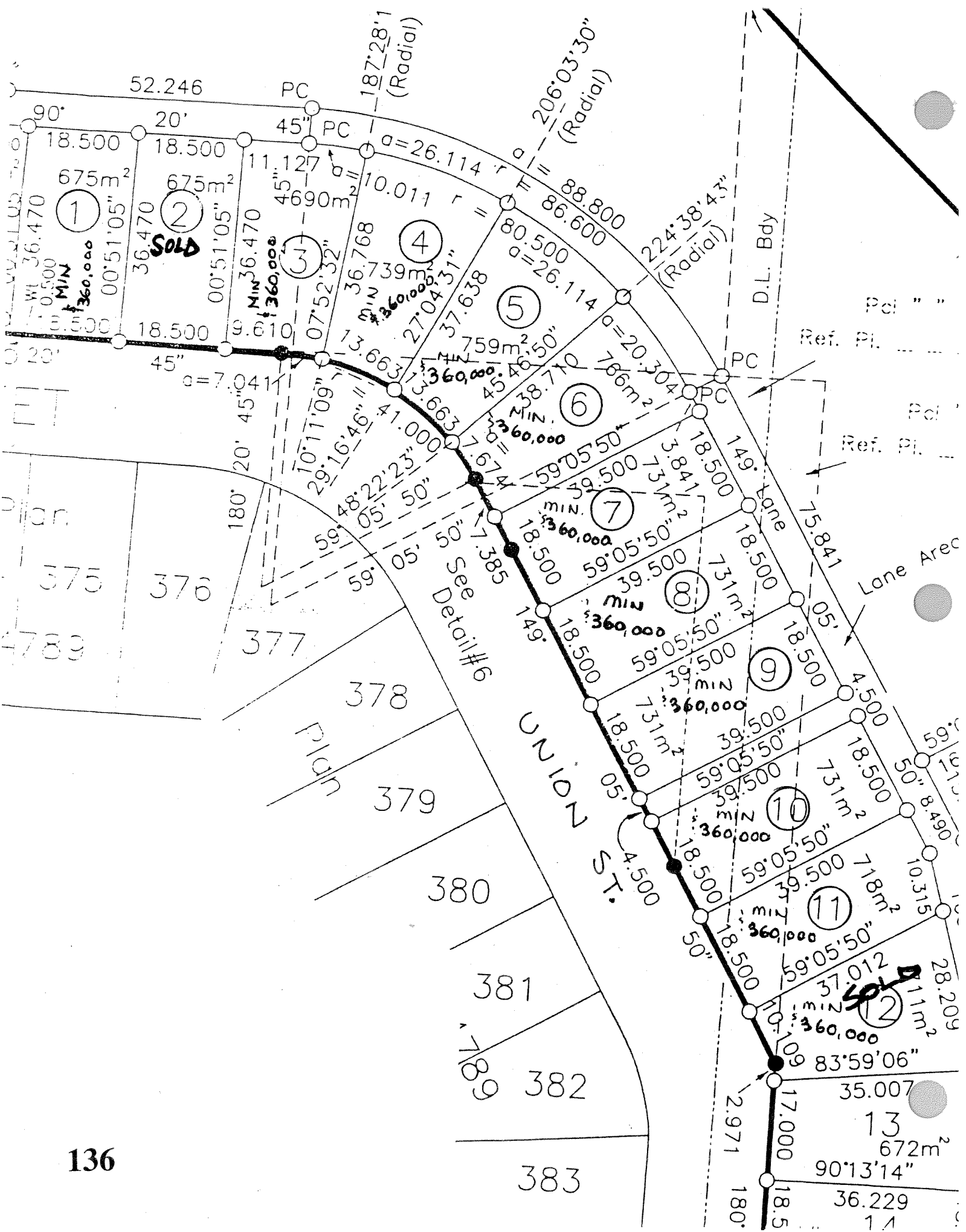
The lots will be offered for sale by public tender early in January 1998.

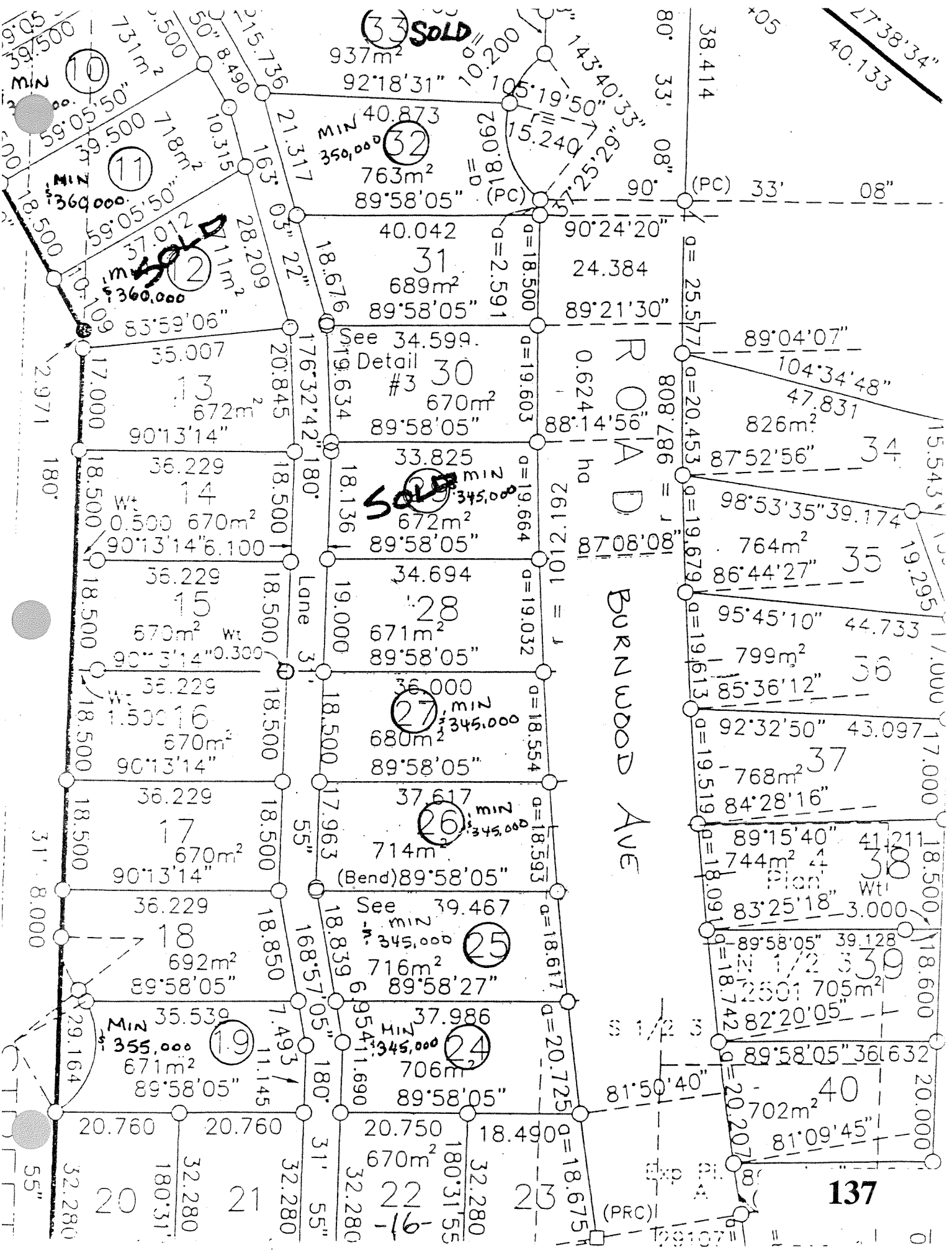

Patricia W. Flieger
City Solicitor

HK:bi

cc Director Planning
Director Finance
Director Engineering

council\crpt\lowerbid





(33) SOLD

(2) SOLD
MIN \$360,000

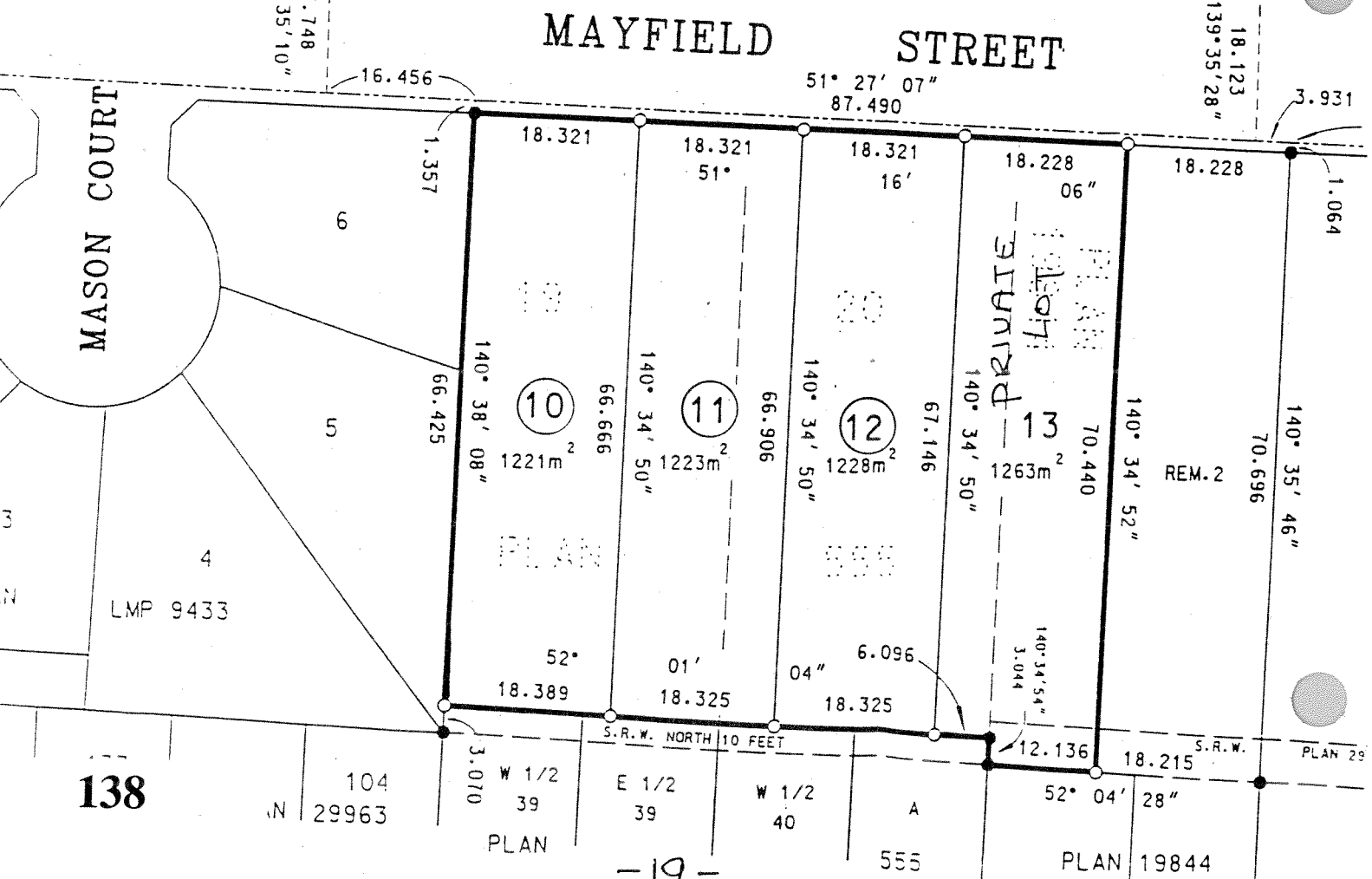
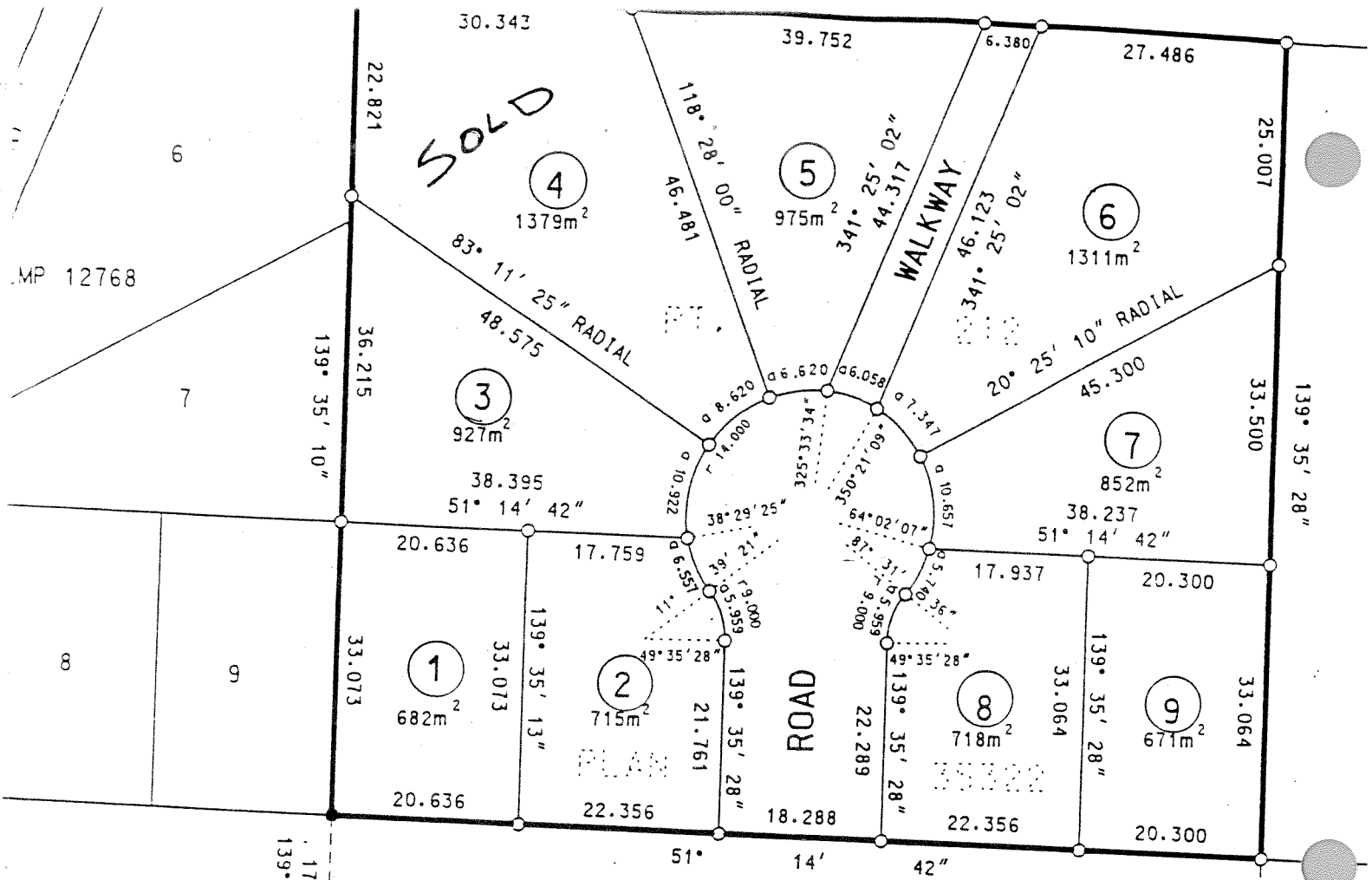
(27) SOLD
MIN \$345,000

(26) MIN
\$345,000

(25) MIN
\$345,000

(24) MIN
\$345,000

(19) MIN
\$355,000



138

104
N 29963

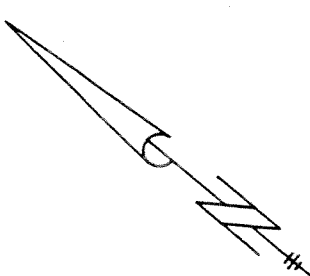
W 1/2
39
PLAN

E 1/2
39

W 1/2
40

A

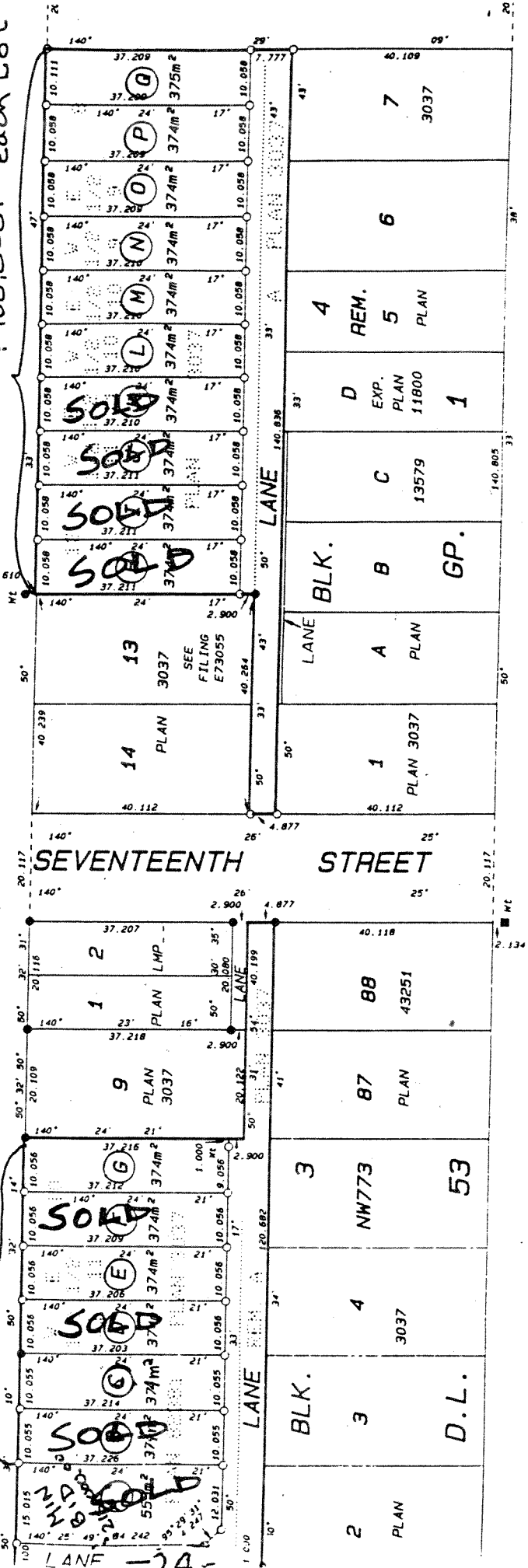
52° 04' 28"
PLAN 19844



LOT 12, BLOCK A, PLAN 3037;
 LOT 9 HAVING A FRONTAGE OF 33 FEET ON ELEVENTH AVENUE
 LOT 10, BLOCK 4, PLAN 3037;
 LOT 53, GROUP 1, NEW WESTMINSTER DISTRICT

M1 INDUSTRIAL ZONING

MIN. BID \$ 170,000.⁰⁰ each lot
MIN. BID \$ 160,000.⁰⁰ each lot

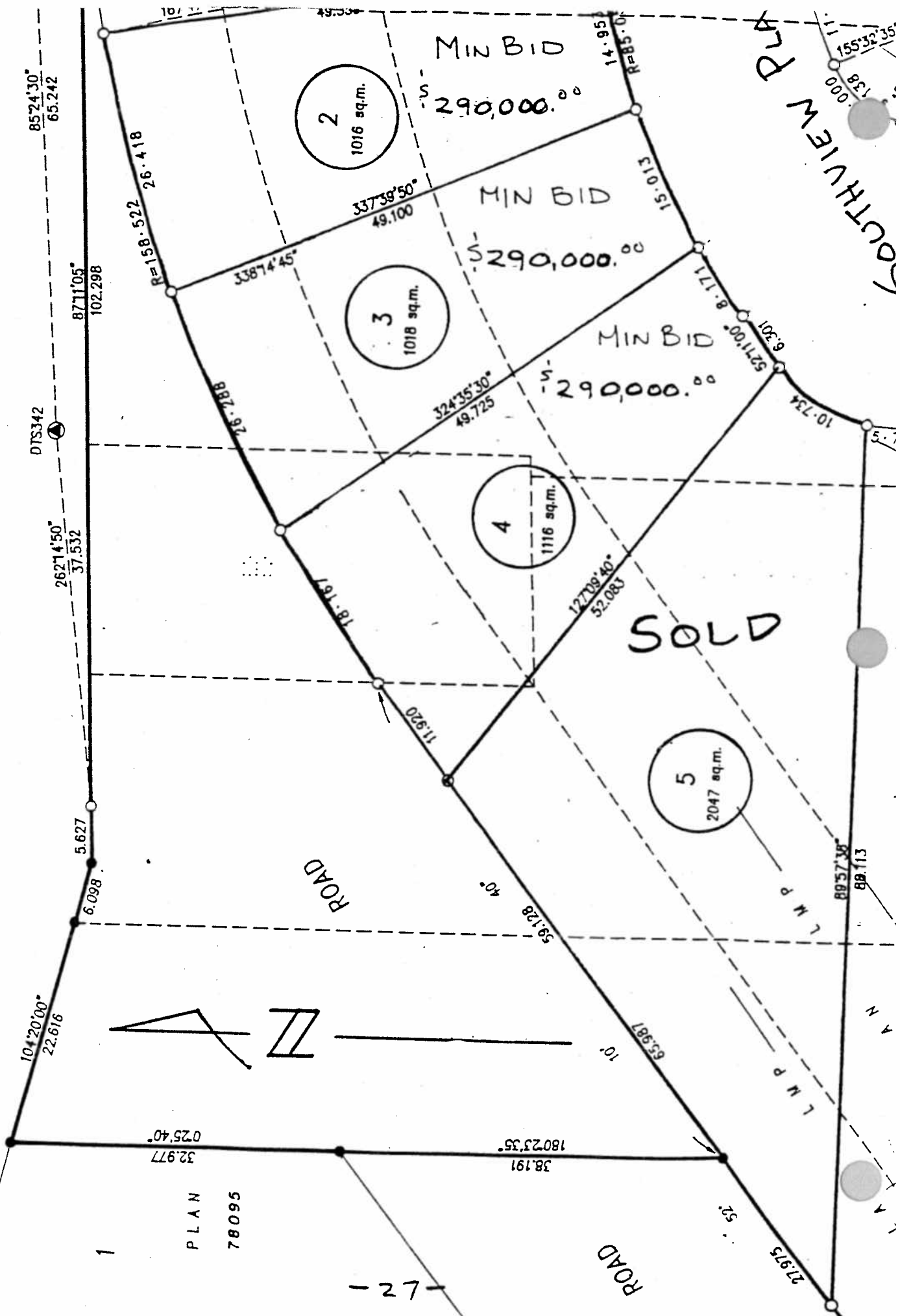


CITY OF BURNABY
 CITY OF NEW WESTMINSTER

AVENUE
 TENTH

B R O A D W A Y

SOUTHVIEW PARK



140

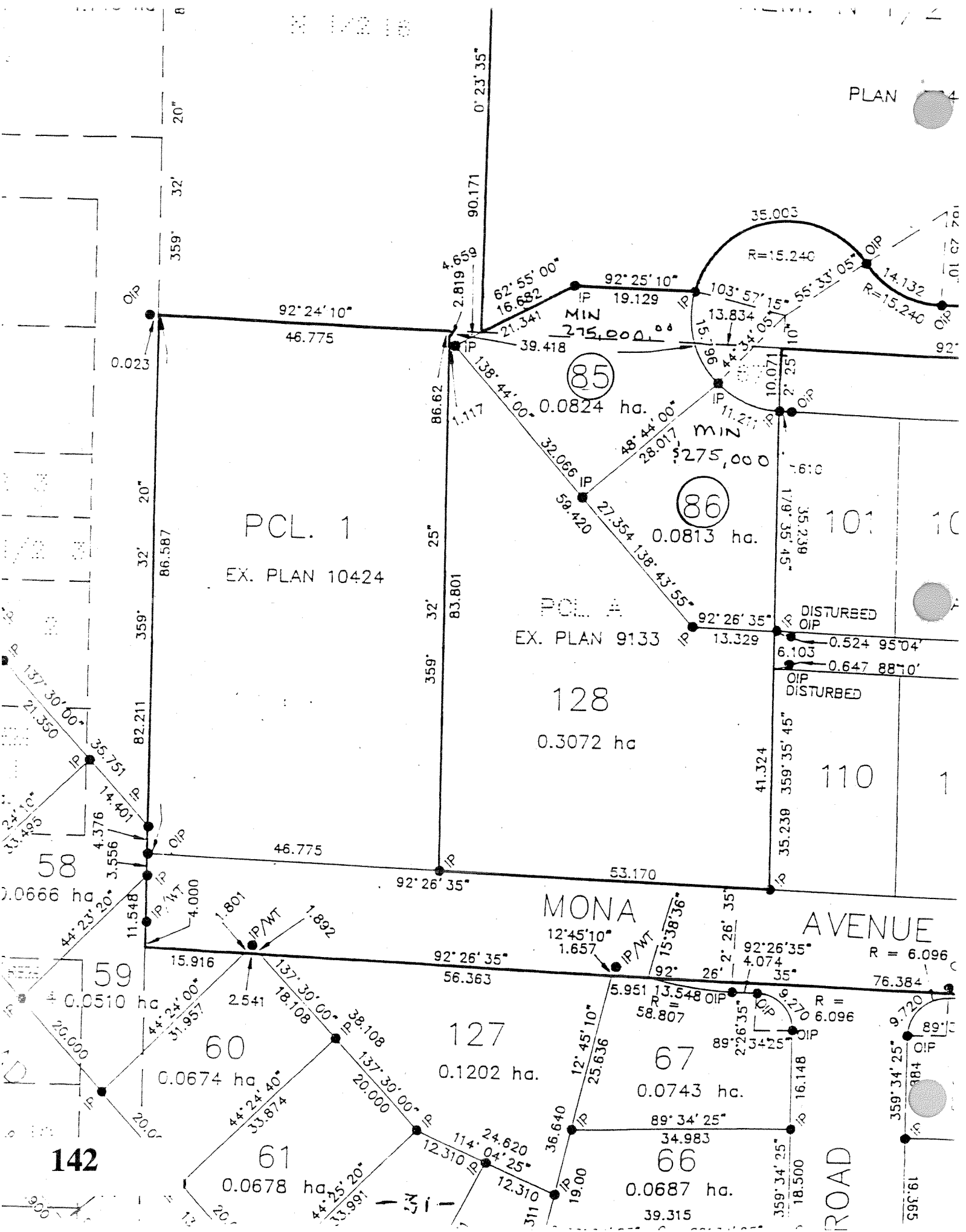
1

PLAN
78095

- 2 -

1/2 18

PLAN 10424



PCL. 1
EX. PLAN 10424

PCL. A
EX. PLAN 9133

128
0.3072 ha

MONA AVENUE

110
1

127
0.1202 ha

67
0.0743 ha

66
0.0687 ha

58
0.0666 ha

59
0.0510 ha

60
0.0674 ha

61
0.0678 ha

142

13

1/2 3

1/2 3

1/2 3

1/2 3

1/2 3

1/2 3

101
10

110
1

89
1

88
1

ROAD

85

86

92°24'10"
46.775

62°55'00"
16.682

92°25'10"
19.129

35.003
R=15.240

103°57'15"
13.834

138°44'00"
0.0824 ha

48°44'00"
0.0813 ha

92°26'35"
13.329

0.524 95°04'
6.103

128
0.3072 ha

0.647 88°10'
35.239

12°45'10"
1.657

92°26'35"
4.074

92°26'35"
56.363

12°45'10"
25.636

89°26'35"
34.25

137°30'00"
38.108

89°34'25"
34.983

137°30'00"
20.000

114°04'25"
24.620

12°45'10"
19.00

359°34'25"
18.500

4°24'00"
31.957

4°24'40"
33.874

4°25'20"
33.991

4°25'20"
33.991

137°30'00"
21.350

35°75'10"
14.401

4°23'20"
3.556

4°24'00"
31.957

4°24'40"
33.874

4°25'20"
33.991

4°25'20"
33.991

359°32'20"

86.587

82.211

82.211

82.211

82.211

82.211

82.211

82.211

82.211

82.211

82.211

82.211

359°32'20"

86.587

82.211

82.211

82.211

82.211

82.211

82.211

82.211

82.211

82.211

82.211

82.211

359°32'20"

86.587

82.211

82.211

82.211

82.211

82.211

82.211

82.211

82.211

82.211

82.211

82.211

359°32'20"

86.587

82.211

82.211

82.211

82.211

82.211

82.211

82.211

82.211

82.211

82.211

82.211

359°32'20"

86.587

82.211

82.211

82.211

82.211

82.211

82.211

82.211

82.211

82.211

82.211

82.211

359°32'20"

86.587

82.211

82.211

82.211

82.211

82.211

82.211

82.211

82.211

82.211

82.211

82.211

359°32'20"

86.587

82.211

82.211

82.211

82.211

82.211

82.211

82.211

82.211

82.211

82.211

82.211

359°32'20"

86.587

82.211

82.211

82.211

82.211

82.211

82.211

82.211

82.211

82.211

82.211

82.211

359°32'20"

86.587

82.211

82.211

82.211

82.211

82.211

82.211

82.211

82.211

82.211

82.211

82.211

359°32'20"

86.587

82.211

82.211

82.211

82.211

82.211

82.211

82.211

82.211

82.211

82.211

82.211

359°32'20"

86.587

82.211

82.211

82.211

82.211

82.211

82.211

82.211

82.211

82.211

82.211

82.211

359°32'20"

86.587

82.211

82.211

82.211

82.211

82.211

82.211

82.211

82.211

82.211

82.211

82.211

359°32'20"

86.587

82.211

82.211

82.211

82.211

82.211

82.211

82.211

82.211

82.211

82.211

82.211

359°32'20"

86.587

82.211

82.211

82.211

82.211

82.211

82.211

82.211

82.211

82.211

82.211

82.211

359°32'20"

86.587

82.211

82.211

82.211

82.211

82.211

82.211

82.211

82.211

82.211

82.211

82.211

359°32'20"

86.587

82.211

82.211

82.211

82.211

82.211

82.211

82.211

82.211

82.211

82.211

82.211

359°32'20"

86.587

82.211

82.211

82.211

82.211

82.211

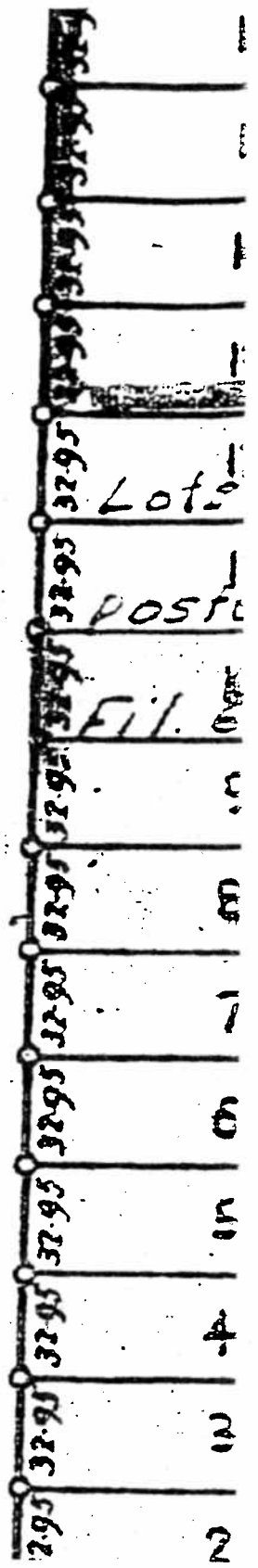
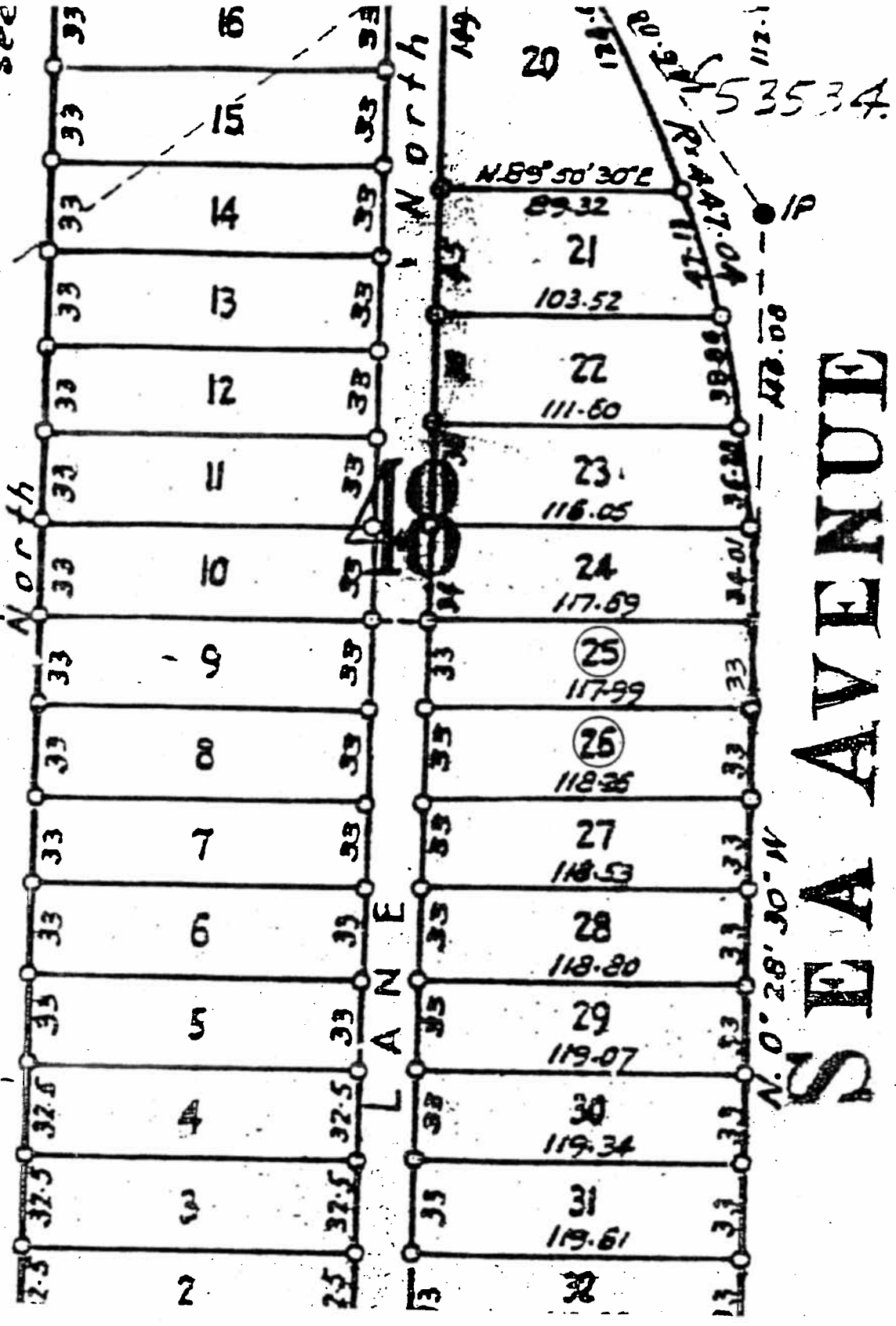
82.211

82.211

82.211

AVENUE

See 17th



143

LOTS 25 & 26 MINIMUM BID \$240,000.00 PER LOT

