

ITEM	16
MANAGER'S REPORT NO.	70
COUNCIL MEETING	93/11/29

TO: CITY MANAGER 1993 NOVEMBER 23

FROM: DIRECTOR PLANNING & BUILDING OUR FILE: 08.640
"Hastings/Gaglardi"
"Canada Way"

SUBJECT: **TREE PLANTING ON HASTINGS/GAGLARDI
CONNECTOR AND CANADA WAY/EDMONDS PROJECT**

PURPOSE: To respond to Council inquiries regarding tree planting on the Hastings/Gaglardi and Canada Way/Edmonds project.

RECOMMENDATION:

1. **THAT** a copy of this report be forwarded to Mr. J. Jensen, Regional Director, South Coast Region, Ministry of Transportation and Highways, and T. Tasaka, Project Director, and T. Walton, Project Manager of the Barnet/Hastings People Moving Project.

REPORT

1.0 BACKGROUND

At its regular meeting of 1993 September 22 Council discussed the planting of trees in conjunction with the construction of the Hastings/Gaglardi Connector and the Canada Way/Edmonds projects. Arising from this discussion the following motions were adopted:

1. *"THAT staff investigate and report on the feasibility and cost of planting trees along the Hastings Street portion of the proposed Gaglardi Connector in order to enable them to become established and begin growing before the connector traffic begins.*
2. *THAT staff investigate and report on the feasibility and cost of planting the proposed replacement trees at the Edmonds School site at Canada Way and that the staff include reference to the possibility of using Chestnut Trees as the replacement trees. "*

This report responds to these two directions from Council.

ITEM	16
MANAGER'S REPORT NO.	70
COUNCIL MEETING	93/11/29

2.0 HASTINGS/GAGLARDI CONNECTOR

Staff have been working closely with the Ministry of Transportation and Highways in the development of a landscaping plan for the Hastings/Gaglardi Connector. On the existing section of Hastings Street east of Inlet Drive this plan will involve tree planting in the back boulevards on both blocks of Hastings and on private property in front of the apartments located at 7110 Barnet Road as shown in Figure 1 *attached*.

In reviewing the feasibility of tree planting in advance of the Hastings/Gaglardi Connector, the Ministry has suggested that some landscaping could be undertaken in advance of the project if it was in an appropriate location which would not be subject to disturbance during the construction period. In this regard consideration could be given to tree planting in the wide setback area fronting the aforementioned apartment complex on private property, but not in the back boulevards. As the existing trees in this area are to be removed and the new trees would be set back some distance from the property line, the Ministry will pursue planting of trees in this private land area in advance of the Hastings/Gaglardi Connector Project. Staff will continue to liaise with the Ministry on this matter.

3.0 CANADA WAY/EDMONDS PROJECT

The Canada Way/Edmonds intersection project will involve the removal of eighteen chestnut trees currently located inside the former Edmonds School property on Canada Way. The Ministry of Transportation and Highways has indicated a commitment to replace these trees with others of a similar variety. To avoid a future conflict with Canada Way, the replacement trees would be located approximately 3 m within the property line on City-owned property.

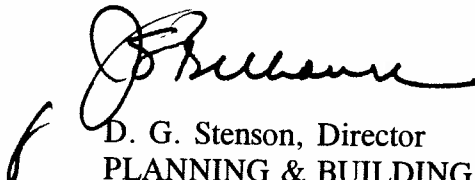
As the Canada Way/Edmonds Project may be delayed until 1995, however, the opportunity exists for replacement trees to be planted now so that they become established prior to removal of the existing trees.

Transportation Planning staff have discussed with the Ministry the proposal to plant replacement trees in advance of the Canada/Edmonds project and have received a favourable response. Ministry staff are currently consulting with staff of the Parks and Recreation Department to determine precise planting locations and tree specifications with a view to completing the work early in 1994. Due to its high maintenance costs staff would not recommend the selection of the horse chestnut as a replacement tree. Parks staff have advised that typically in park locations oak or maple trees are preferred.

ITEM	16
MANAGER'S REPORT NO.	70
COUNCIL MEETING	93/11/29

4.0 SUMMARY

Staff have discussed the feasibility of advancing part of the landscaping for the Hastings/Gaglardi Connector and Canada Way/Edmonds Projects and have received a favourable response from the Ministry of Transportation and Highways. The costs of planting trees in the locations identified by Council would be accommodated within the budgets for these Provincial highways projects. Staff will continue to deal with the Ministry with regard to implementation of the two tree planting initiatives.

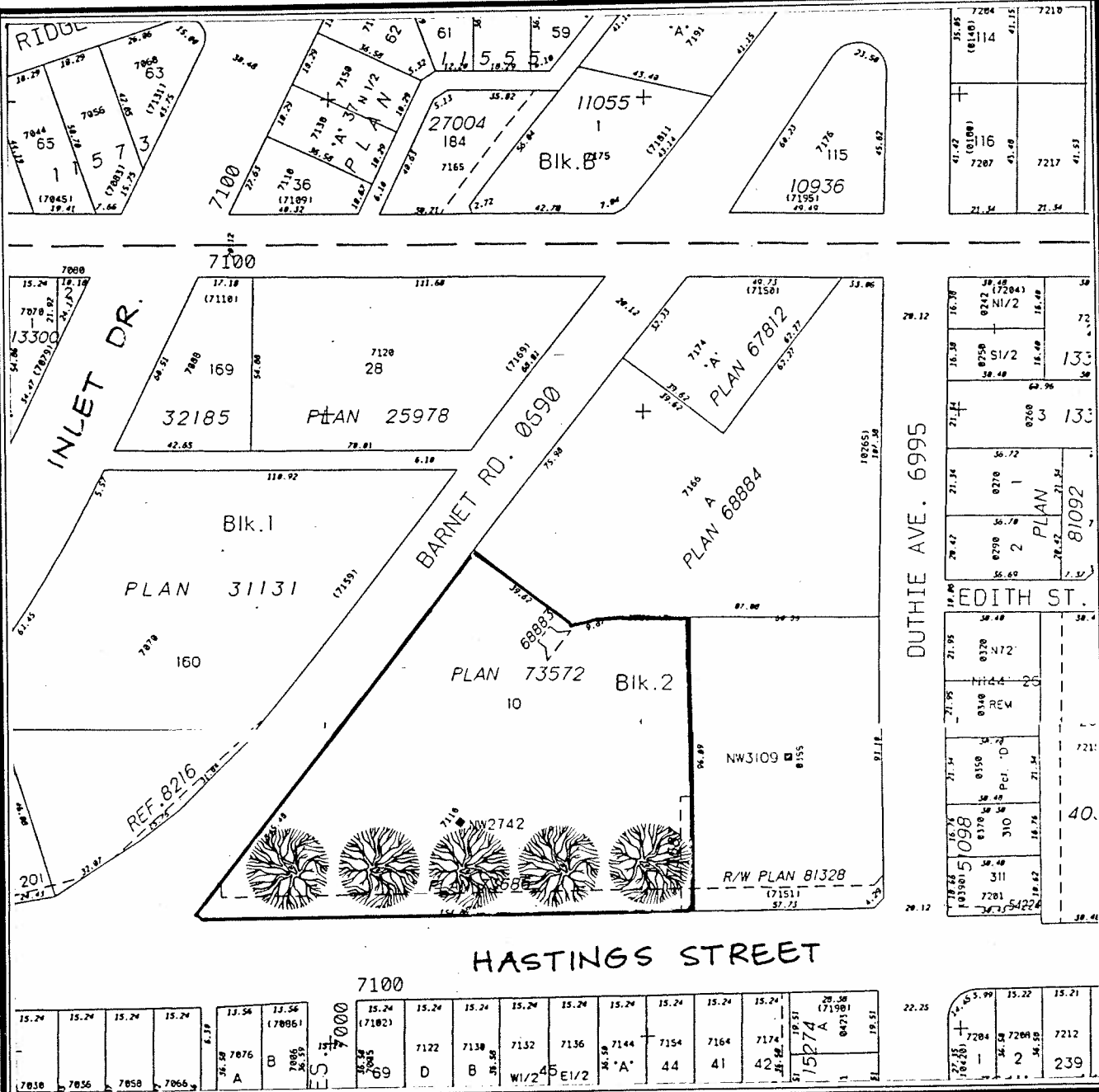

D. G. Stenson, Director
PLANNING & BUILDING


RG/jp

Attachment

cc: Director Engineering
Director Recreation & Cultural Services

ITEM 16
 MANAGER'S REPORT NO. 70
 COUNCIL MEETING 93/11/29



Date: 1993 NOV.
 Scale: 1:2000
 Drawn By: R.N.

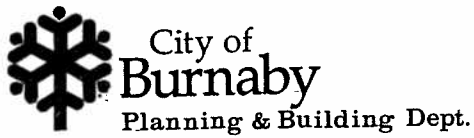


FIGURE 1
 7110 BARNET ROAD
 TREE PLANTING