

REPORT
Regular Council Meeting
1992 October 19

THE CITY OF BURNABY

COMMUNITY ISSUES AND SOCIAL PLANNING COMMITTEE

HIS WORSHIP, THE MAYOR
AND COUNCILLORS:

RE: Metrotown Social Planning Program

RECOMMENDATION:

1. THAT Council adopt the revised Metrotown Social Planning Program as outlined in Section 2.0 and APPENDIX 1 of the attached report as a basis for social planning in Metrotown over the next three to four years.

The Community Issues and Social Planning Committee, at its meeting held 1992 September 30 gave further consideration to a report from the Director Planning and Building which provides a revised Metrotown Social Planning Program.

It was the consensus of the Committee that implementation of the Program is a priority at this time and therefore submit this report for Council's endorsement.

Respectfully submitted,

Councillor E. Nikolai
Chair

Councillor D. Evans
Member

Councillor C. Redman
Member

Councillor J. Young
Member

INTERNAL DISTRIBUTION:

:--AGENDA 1992 OCTOBER 19
:--COPY - City Manager
- Director Planning & Building
- Director Admin. & Comm. Services
- Director Engineering
- Director Recreation & Cultural Services
- O.I.C., R.C.M.P.

TO: CHAIRPERSON AND MEMBERS 1992 May 25
COMMUNITY ISSUES &
SOCIAL PLANNING COMMITTEE File: 17.822

FROM: DIRECTOR PLANNING AND BUILDING

SUBJECT: METROTOWN SOCIAL PLANNING PROGRAM

PURPOSE: To propose a revised Metrotown Social Planning Program for the Committee's and Council's approval.

RECOMMENDATION:

- 1. THAT the Community Issues & Social Planning Committee request Council to adopt the revised Metrotown Social Planning Program as outlined in Section 2.0 and Appendix 1 of this report as a basis for social planning in Metrotown over the next three to four years.

R E P O R T

1.0 BACKGROUND

At its meeting of 1989 May 8, Council adopted the goals, objectives, activities and timelines for social planning in Metrotown, as presented in the report "A Program for Social Planning in Metrotown". The Program had emerged from a two year consultative process involving Municipal staff and the Burnaby Inter-Agency Council.

At its meeting of 1991 July 8, Council authorized the Community Issues & Social Planning Committee to sponsor a community consultation process on social planning in Metrotown to solicit public comment on social planning issues in the area. The process was intended as a review of the original Program and was deemed appropriate in light of the rapid pace of development in Metrotown since 1987. Staff's intention was to compare the issues raised with those identified during the 1987 process and, if necessary, revise the existing Metrotown Social Planning Program.

At its meeting of 1992 February 26, the Community Issues & Social Planning Committee considered a report on the results of the 1991 consultation process. As outlined in that report, eight priority issues were identified during the process. Those issues, in order of priority, are:

- . level of human services e.g. services for seniors, children, youth, families.
- . degree of attention to "humanizing" aspects of Metrotown development e.g. arts and cultural opportunities, aesthetics and design, signage, promotion of public amenities.
- . concerns for personal security - perceived threat of crime and violence
- . attention to pedestrian orientation
- . parking, especially near commercial facilities and Skytrain stations
- . need to ensure Metrotown is accessible and barrier-free to those with disabilities and special needs
- . need for improvements to public transit system
- . increasing traffic volume

The priority issues are consistent with those which form the basis of the existing Social Planning Program, although the level of concern regarding issues such as personal security and pedestrian orientation seems to have increased significantly. The revised Social Planning Program for Metrotown, outlined in Section 2.0 and Appendix 1, attached, reflects these changing public priorities. It is based, in part, on suggestions put forward by the community during the consultation process and, in part, on existing work already underway. Given the comprehensive and ambitious nature of the Program, not all issues can be tackled at once or by one person. Municipal staff, other than Social Planners, are, or will be, initiating and co-ordinating many of the actions, with Social Planning staff serving to facilitate or comment on the initiatives.

2.0 METROTOWN SOCIAL PLANNING PROGRAM

2.1 Policy Context

The context for all social planning activities in Burnaby - including those in Metrotown - is provided by the Official Community Plan (OCP), which was adopted by Municipal Council in 1987 December. An excerpt from the OCP regarding social planning is attached as Appendix 2. As indicated in the excerpt, Burnaby's social planning activities fall within three substantive areas: housing, the physical environment, and human services and coordination. They are also guided by thirteen broad principles or values including responsibility, equity and fairness, choice, integration and prevention.

These substantive areas and principles are intended to apply to Municipal-wide rather than area-specific social planning activities. Nevertheless, to varying degrees, these substantive areas and principles are reflected in the revised Metrotown Social Planning Program.

2.2 Social Planning Policy Goals

The following framework goals, most of which were developed for the original Metrotown Social Planning Program, provide additional context for the revised Metrotown Social Planning Program:

GENERAL: The Municipality promotes open consultation with service agencies, community groups, businesses, developers, residents and the general public on social planning issues in Metrotown.

HUMAN SERVICES: The Municipality encourages the establishment of an adequate range of human services in Metrotown to meet the needs of all people living in, working in and visiting the area.

HOUSING: The Municipality encourages the establishment of a range of housing opportunities in and near Metrotown, including housing for families, special needs groups and low-income households.

HUMANIZING ELEMENTS: The Municipality promotes the development of a social and physical environment that provides opportunities for shopping, entertainment, business activities, socialization, relaxation and passive recreation.

MOVEMENT: The Municipality promotes the provision of a variety of opportunities for all segments of the population, including those with special needs, to travel to and within Metrotown.

CRIME PREVENTION: The Municipality promotes the development of a social and physical environment in Metrotown which helps to reduce opportunities for crime and instills in the public a sense of personal security and safety.

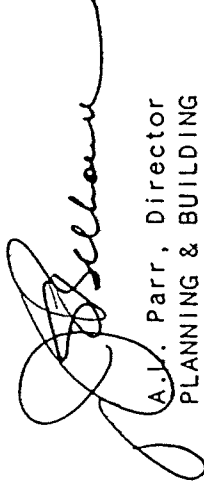
2.3 Objectives, Actions and Timelines

A summary of revised objectives, actions and timelines, incorporating suggestions and comments made during the public consultation process, is presented in Appendix 1, attached. The summary identifies 36 objectives, categorized under the five main subject areas of human services, housing, humanizing elements, movement and crime prevention. As well, the summary identifies more than 160 social planning actions to be pursued. It also identifies the key groups to be consulted regarding the actions. The actions are divided into three time frames: ongoing actions which are conducted on an ongoing basis), immediate (actions which will be completed or see significant activity within one year) and long-term (actions which will be completed or see significant activity within one to four years).

3.0 CONCLUSION

The proposed goals, objectives, actions and timelines for social planning in Metrotown as outlined in the revised Metrotown Social Planning Program are comprehensive, complex and challenging. Staff recommend that the Program be adopted as a basis for social planning in Metrotown over the next three to four years.

Once the Program has been adopted, monitoring will be necessary to determine its effectiveness in addressing its stated objectives. Modifications will be made as necessary. Monitoring will also be necessary to ensure that the Program remains responsive to changing community needs and priorities. Staff intend to keep abreast of such changes in a number of ways including ongoing contact with members of the community who indicate an interest in serving on ad hoc or permanent Metrotown advisory groups. Staff will report to the Community Issues & Social Planning Committee on at least an annual basis regarding progress in implementing the revised Program and improving the social environment of the Metrotown community.



A.J. Parr, Director
PLANNING & BUILDING

JS/db

cc: Director Administrative and Community Services
Director Engineering
Director Finance
Director Recreation and Cultural Services
Medical Health Office
Municipal Solicitor
Officer-In-Charge, R.C.M.P.
Superintendent, School District 41

METROTOWN SOCIAL PLANNING PROGRAM: MODIFIED 1992 MAY

<u>Subject Area</u>	<u>Issues</u>	<u>Objectives</u>	<u>Action</u>	<u>Key Participants</u>	<u>*Timing</u>
HUMAN SERVICES	General	To encourage developers to make an appropriate contribution to the human services and/or social amenity requirements for Metrotown.	Develop a human service/social amenities checklist, indicating an appropriate type and level of services/amenities to be provided by developers in Metrotown through the rezoning process, taking into account the scale of the proposed development and the need for services/amenities.	Staff: - Planning & Building	Immediate
		To facilitate provision of affordable and appropriate office space to meet the needs of not-for profit agencies providing human services in Metrotown.	Examine the potential role of the Municipality in ensuring the availability of affordable office space for not-for-profit service agencies in or near Metrotown and make recommendations to Council.	Staff: - Planning & Building - Finance - Parks & Recreation Inter Agency Council Municipal Council	Long Term
			Consult with the School District regarding the possibility of changing the School Board's mandate to allow for use of school space in off-hours for shared-space social service activities.	Staff: - Planning & Building School District 41	Immediate
			Consult with shopping centre management regarding the feasibility of making existing shopping centre space available to not for profit service agencies at subsidized rates.	Staff: - Planning & Building Shopping Centre Management	Immediate
		As a human service/social amenity, establish the provision of subsidized office space for non-profit service agencies by developers as a high priority item.	Staff: - Planning & Building Developers	Ongoing	

* Ongoing: Actions which are conducted on an ongoing basis.
 Immediate: Actions which will be completed or see significant activity within 1 year.
 Long Term: Actions which will be completed or see significant activity within 1 - 4 years.

METROTOWN SOCIAL PLANNING PROGRAM: MODIFIED 1992 MAY

<u>Subject Area</u>	<u>Issues</u>	<u>Objectives</u>	<u>Action</u>	<u>Key Participants</u>	<u>*Timing</u>
HUMAN SERVICES (Continued)	General (Continued)		Assess feasibility of modifying the Zoning Bylaw to allow for small offices in a greater number of zones and, if appropriate, make recommendations to Council.	Staff: - Planning & Building - Legal Municipal Council	Immediate
			Consult with service agencies regarding feasibility of sharing office space and resources amongst themselves.	Staff: - Planning & Building Inter-Agency Council	Immedi
			Investigate human service needs in Metro-town and identify potential providers of required space.	Staff: - Planning & Building - Health - Parks & Recreation Developers Inter-Agency Council Churches Shopping Centre Management School District 41	Long Term
		To promote the development of adequate services in areas bordering Metrotown as a way of reducing possible excess demands on Metrotown services and facilities.	Maintain liaison with City of Vancouver Social Planning staff during the planning process for social services and amenities for Collingwood Village.	Staff: - Planning & Building City of Vancouver Social Planning	Immediate
			Participate in Social Planning Infrastructure Studies for areas of Burnaby other than Metrotown.	Staff: - Planning & Building Community representatives	Ongoing

METROTOWN SOCIAL PLANNING PROGRAM: MODIFIED 1992 MAY

<u>Subject Area</u>	<u>Issues</u>	<u>Objectives</u>	<u>Action</u>	<u>Key Participants</u>	<u>*Timing</u>
HUMAN SERVICES (Continued)	Child Care	To facilitate establishment of quality, physically accessible child care centres for children from birth to twelve years of age in and near Metrotown.	Consult with School District and appropriate Municipal Departments regarding the feasibility of including child care facilities in Municipal and School District developments in Metrotown e.g. Maywood School, future phases of Bonsor Recreation Complex.	Staff: - Planning & Building - Parks & Recreation - Health School District 41	Immediate
			As a human service/social amenity, establish the provision of child care centres by developers at Station Square and other major private developments in Metrotown as a high priority item.	Staff: - Planning & Building - Health Developers Management of Station Square	Ongoing
			Investigate the feasibility of additional mechanisms for encouraging the development of child care facilities in Metrotown e.g. churches, development cost charges, bonus zoning.	Staff: - Planning & Building - Health Inter-Agency Council Churches Provincial Government	Long Term
			Examine options other than direct provision of child care facilities for improving the effectiveness/availability of child care services e.g. employee registry/referral service, flexible hours for staff, child care allowance.	Staff: - Planning & Building - Parks & Recreation - Health Churches Federal Government Provincial Government Metrotown employers/ employees	Long Term

<u>Subject Area</u>	<u>Issues</u>	<u>Objectives</u>	<u>Action</u>	<u>Key Participants</u>	<u>*Timing</u>
HUMAN SERVICES (Continued)	Youth Services	To facilitate, in consultation with youth, development of appropriate services and facilities to meet the needs of young people living in or frequenting Metrotown.	Consult with School District, Parks & Recreation and other appropriate Municipal departments regarding the feasibility of providing additional youth programs and facilities at Club Metro, Bonsor Recreation Complex and other Municipal developments in Metrotown.	Staff: - Planning & Building - Parks & Recreation - Health - Library School District 41	Immediate
			Liase with Club Metro and Parks & Recreation staff within the context of youth concerns in Metrotown.	Staff: - Planning & Building - Parks & Recreation	Ongoing
			Examine the feasibility of establishing a youth drop-in facility in one or more of the Metrotown shopping centres.	Staff: - Planning & Building - Parks & Recreation Shopping Centre Management	Immediate
			Consult with local churches regarding their potential role in meeting the needs of youth e.g. church space, youth workers.	Staff: - Planning & Building Churches	Long Term
			Consult with service agencies regarding their capacity to meet the needs of youth and support their initiatives, as appropriate.	Staff: - Planning & Building - Health - Parks & Recreation Inter-Agency Council	Ongoing
			Investigate other means to assist youth-serving agencies to locate in/near Metrotown.	Staff: - Planning & Building	Long Term

METROTOWN SOCIAL PLANNING PROGRAM: MODIFIED 1992 MAY

<u>Subject Area</u>	<u>Issues</u>	<u>Objectives</u>	<u>Action</u>	<u>Key Participants</u>	<u>*Timing</u>
HUMAN SERVICES (Continued)	Seniors' Services	To facilitate, in consultation with seniors, development of appropriate services and facilities to meet the needs of senior citizens, 55 years and over, living in and near Metrotown.	Consult with Parks & Recreation Department regarding the feasibility of providing additional facilities and resources at Bonsor Recreation Complex for seniors.	Staff: - Planning & Building - Parks & Recreation Bonsor Seniors Society	Immediate
			Consult with School District, Parks & Recreation and other appropriate Municipal departments regarding the feasibility of implementing additional programs/services for seniors e.g. hot lunch program at Bonsor, Children's visitations to senior citizens' homes.	Staff: - Planning & Building - Parks & Recreation - Health - Library School District 41	Long Term
			Consult with the Health Department and other Municipal departments regarding the current level of services to senior citizens and the possible need for additional services to fill unmet needs e.g. home visitation, home support, life skills courses, community based medical/health care services.	Staff: - Planning & Building - Health Network of Burnaby Seniors	Long Term
			Consult with shopping centre management regarding the feasibility of including seniors' services/events in shopping centres e.g. temporary/flu-shot clinics.	Staff: - Planning & Building - Health - Parks & Recreation Management of Shopping Centres	Immediate
			Examine the feasibility of local churches responding to the needs of seniors for activity/drop-in centres, hot lunch program, volunteer visitors, outings, etc.	Staff: - Planning & Building - Health - Parks & Recreation Churches	Long Term

<u>Subject Area</u>	<u>Issues</u>	<u>Objectives</u>	<u>Action</u>	<u>Key Participants</u>	<u>*Timing</u>
HUMAN SERVICES (Continued)	Seniors' Services (Continued)		Examine the need and options for establishing adult day care services in and near Metro-town.	Staff: - Planning & Building - Health - Parks & Recreation Inter-Agency Council Network of Burnaby Seniors	Long Term
	Family Services	To facilitate development of and access to appropriate services and facilities for families living in and near Metrotown.	Consult with service agencies, the School District, appropriate Municipal departments and residents of Metrotown regarding the type of family-oriented amenities required in Metrotown.	Staff: - Planning & Building - Health - Parks & Recreation Inter-Agency Council School District 41 Metrotown residents	Long Term
			Consult with service providers, the Metro-town business community and appropriate Municipal departments regarding the feasibility of including family services and amenities in Metrotown e.g. a "family place", co-ed restrooms with baby change facilities, promotion of volunteer grandparents' program, increased emphasis on family programming at Bonsor.	Staff: - Planning & Building - Health - Parks & Recreation Inter-Agency Council Shopping Centre Management Other Metrotown businesses Churches	Long Term
			Consult with area churches regarding their potential role in satisfying the service needs of families living in Metrotown.	Staff: - Planning & Building Churches	Long Term

METROTOWN SOCIAL PLANNING PROGRAM: MODIFIED 1992 MAY

<u>Subject Area</u>	<u>Issues</u>	<u>Objectives</u>	<u>Action</u>	<u>Key Participants</u>	<u>*Timing</u>
HUMAN SERVICES (Continued)	Family Services (Continued)		Investigate the desirability and feasibility of transporting Metrotown children by bus to other areas of the Municipality where family-oriented facilities and services are available.	Staff: - Planning & Building - Health - Parks & Recreation Inter-Agency Council	Long Term
	Services for Persons with Special Needs	To facilitate development of appropriate services and facilities to meet the needs of persons with special needs living in and near Metrotown.	Consult with the Health Department, other appropriate Municipal departments, School District and service agencies regarding the current level of services and the need for additional services to fill unmet needs of persons with physical, mental and psychiatric disabilities e.g. life skills programs, home support, visitations, outings.	Staff: - Planning & Building - Health - Parks & Recreation Inter-Agency Council School District 41	Long Term
			Consult with local churches regarding their potential role in meeting the needs of persons with physical, mental and psychiatric disabilities e.g. life skills, home support, visitations, outings.	Staff: - Planning & Building Churches	Long Term
	Education Services	To encourage provision of an adequate range of education programs in and near Metrotown.	Monitor demographic changes with respect to ethnic/language groups and the impact of such changes on service provision, making recommendations as appropriate.	Staff: - Planning & Building Inter-Agency Council Burnaby Multicultural Society	Ongoing
Encourage educational institutions to develop facilities and/or offer education programs in Metrotown.			Staff: - Planning & Building School District 41 B.C.I.T. Douglas College S.F.U.	Long Term	

<u>Subject Area</u>	<u>Issues</u>	<u>Objectives</u>	<u>Action</u>	<u>Key Participants</u>	<u>*Timing</u>
HUMAN SERVICES (Continued)	Education Services (Continued)		Where feasible and appropriate, accommodate education programs in Municipal facilities in Metrotown.	Staff: - Planning & Building - Parks & Recreation Inter-Agency Council School District 41 B.C.I.T. Douglas College S.F.U.	Ongoing
	Information and Referral Services	To facilitate development and public use of information and referral services which meet the needs of people living in, working in, and visiting Metrotown.	Explore options for providing information and referral services in Municipal facilities and/or private developments.	Staff: - Planning & Building - Admin. & Comm. Services - Finance - Parks & Recreation - Library Inter-Agency Council	Long Term
			Investigate options for publicizing existing amenities and services in Metrotown e.g. Directory, Metrotown newspaper, a brochure, newspaper supplements.	Staff: - Planning & Building - Parks & Recreation - Health - Admin. & Comm. Services - Library	Immediate
			Consult with Burnaby's Economic Development Officer, developers, businesses representatives, Chamber of Commerce and others regarding participation in tourism initiatives, as appropriate.	Staff: - Planning & Building Metrotown Businesses Developers Chamber of Commerce	Ongoing

METROTOWN SOCIAL PLANNING PROGRAM: MODIFIED 1992 MAY

<u>Subject Area</u>	<u>Issues</u>	<u>Objectives</u>	<u>Action</u>	<u>Key Participants</u>	<u>*Timing</u>
HUMAN SERVICES (Continued)	Information and Referral Services (Continued)		Investigate options for establishment of an information exchange vehicle for people living/working in Metrotown e.g. community bulletin board, newsletter.	Staff: - Planning & Building - Library - Parks & Recreation - Admin. & Comm. Services - Finance Shopping Centre Management	Long Term
HOUSING	General/ Policy	To facilitate development of a balanced residential community in Metrotown which reflects the socio-economic, demographic and cultural make-up of the Municipality.	In consultation with the Housing Planner, and other Planning staff, develop an affordable housing policy statement for Metrotown.	Staff: - Planning & Building Housing Committee Municipal Council	Long Term
			In conjunction with appropriate Municipal staff, establish targets for various types of non-market and supportive housing in Metrotown, monitor unit development and make recommendations as appropriate.	Staff: - Planning & Building - Health Housing Committee Municipal Council	Long Term
			Monitor vacancy and rent levels in private dwellings in Metrotown and provide referral assistance to tenants as appropriate.	Staff: - Planning & Building	Ongoing
			In conjunction with appropriate Municipal staff, monitor discrimination against low-income persons and families with children in rental housing and explore options for action.	Staff: - Planning & Building - Health School District 41 Tenants' Rights Coalition	Ongoing
			In conjunction with the Housing Planner, and other Planning staff, explore the feasibility of re-examining the existing policy of developing Metrotown as a non-family neighbourhood and, if appropriate, develop design guidelines for housing families at high densities.	Staff: - Planning & Building Housing Committee Municipal Council	Long Term

<u>Subject Area</u>	<u>Issues</u>	<u>Objectives</u>	<u>Action</u>	<u>Key Participants</u>	<u>*Timing</u>
HOUSING (Continued)	General/ Policy (Continued)		In conjunction with the Housing Planner, and other Planning staff, develop a policy governing demolition of rental properties.	Staff: - Planning & Building - Health Housing Committee Municipal Council Network of Burnaby Seniors	Ongoing
			In conjunction with the Housing Planner, and other Planning staff, develop a policy of encouraging developers to include in their multi-family projects amenity/community space and other features to facilitate "aging in place".	Staff: - Planning & Building - Health Network of Burnaby Seniors Housing Committee Municipal Council	
HOUSING	Afford- ability	To encourage retention of quality affordable low-rise rental apartments in and near Metrotown.	In consultation with the Housing Planner, and other Planning staff, review the designation of the "Succession Precinct" area and its possible impact on the retention of affordable rental housing in the area and make recommendations as appropriate.	Staff: - Planning & Building Housing Committee Municipal Council	Long Term
			Investigate strategies used by and experiences of selected North American municipalities in seeking to rehabilitate and protect their older rental apartment stock from redevelopment.	Staff: - Planning & Building	Long Te
			Explore feasibility of supporting non-profit developers in efforts to convert private rental housing to non-market projects.	Staff: - Planning & Building - Finance - Legal	Ongoing

METROTOWN SOCIAL PLANNING PROGRAM: MODIFIED 1992 MAY

<u>Subject Area</u>	<u>Issues</u>	<u>Objectives</u>	<u>Action</u>	<u>Key Participants</u>	<u>*Timing</u>
HOUSING (Continued)	Afford- ability (Continued)		In conjunction with the Housing Planner, continue to press the Province to change the Municipal Act to grant municipalities the power to require landlords to maintain their residential properties at a minimum physical standard.	Staff: - Planning & Building - Legal U.B.C.M.	Long Term
			In conjunction with the Housing Planner, advocate for a rehabilitation program for rental housing funded by senior levels of government.	Staff: - Planning & Building Provincial Government Greater Vancouver Apartment Owners' Association	Long Term
			In conjunction with the Housing Planner, advocate to senior levels of government for higher income eligibility levels for the Homeowner R.R.A.P. program.	Staff: - Planning & Building C.M.H.C.	Long Term
		To encourage construction of quality family and seniors' non-market housing in and near Metrotown.	In conjunction with the Housing Planner, other Planning staff and the Legal Department, explore the feasibility of developing a program of Municipal land acquisition to build a portfolio of Municipal property in and near Metrotown for lease for non-market housing projects and designate one or more Municipal sites in or near Metrotown on a regular basis for non-market development.	Staff: - Planning & Building - Finance - Legal Housing Committee Municipal Council	Long Term
			Support efforts, as appropriate, of non-profit developers and others with innovative ideas for developing non-market housing.	Staff: - Planning & Building - Finance - Legal	Ongoing

<u>Subject Area</u>	<u>Issues</u>	<u>Objectives</u>	<u>Action</u>	<u>Key Participants</u>	<u>*Timing</u>
HOUSING (Continued)	Afford- ability (Continued)		In conjunction with the Housing Planner, continue to advocate that senior levels of government make their lands in or near Metrotown available for lease for developing non-market housing.	Staff: - Planning & Building Housing Committee Municipal Council	Ongoing
			In conjunction with the Housing Planner, continue to advocate for increased funding of non-market housing from senior levels of government.	Staff: - Planning & Building - Legal Housing Committee Municipal Council	Ongoing
			In conjunction with the Housing Planner, and other Planning staff, examine the feasibility of bonus zoning as a means of acquiring additional non-market housing units.	Staff: - Planning & Building - Legal	Ongoing
	Special Needs	To encourage development of a sufficient number of accessible or adaptable dwelling units in Metrotown.	Examine the advisability of revising the existing Municipal adaptable housing policy to <u>require</u> rather than encourage the inclusion of adaptable units in multi-family developments.	Staff: - Planning & Building - Health Architectural Institute of British Columbia Premier's Advisory Council for Persons with Disabilities Urban Development Institute	Long Term
	To encourage establishment, where appropriate, or specialized homes for persons with mental and physical disabilities in and near Metrotown.	In conjunction with the Housing Planner, the Legal Department and other appropriate staff, designate Municipal sites for lease to non-profit societies and others with an interest in developing special needs housing.	Staff: - Planning & Building - Health - Legal - Finance	Ongoing	

METROTOWN SOCIAL PLANNING PROGRAM: MODIFIED 1992 MAY

<u>Subject Area</u>	<u>Issues</u>	<u>Objectives</u>	<u>Action</u>	<u>Key Participants</u>	<u>*Timing</u>
HUMANIZING ELEMENTS	Design, Aesthetics and Density	To promote a "human" scale and face for Metrotown development.	Consult with the Urban Design Planning staff on means to better integrate the major shopping centres with the surrounding Metrotown community.	Staff: - Planning & Building Developers Shopping Centre Management	Immediate
			Consult with the Urban Design Planning staff on means to better integrate Kingsway into Metrotown development.	Staff: - Planning & Building	Immediate
			Assist Urban Design Planning staff in examining the feasibility of developing Kingsway as a special type of "Main Street" unique to Metrotown with emphasis on development of an active, lively, grade-level outdoor street to complement the indoor shopping centres in the core area.	Staff: - Planning & Building Metrotown Businesses	Immediate
			Consult with the Urban Design Planning staff regarding upgrading the Kingsway streetscape through the use of plants, street furniture and fountains.	Staff: - Planning & Building - Engineering	Ongoing
			Consult with the Urban Design Planning staff regarding the development of a system of civic streetscape elements to unify the character and image of Metrotown streets and to provide for better comfort to pedestrians.	Staff: - Planning & Building - Engineering	Long Term

<u>Subject Area</u>	<u>Issues</u>	<u>Objectives</u>	<u>Action</u>	<u>Key Participants</u>	<u>*Timing</u>
HUMANIZING ELEMENTS (Continued)	Design, Aesthetics and Density (Continued)		Consult with Urban Design Planning staff and other appropriate Municipal staff regarding the possibility of establishing view guidelines for Metrotown high-rise development.	Staff: - Planning & Building	Long Term
			Promote more variety in scale of Metrotown developments.	Staff: - Planning & Building Developers	Ongoing
			In conjunction with Urban Design and Heritage Planning staff and other appropriate Municipal staff, encourage the incorporation of heritage features into Metrotown development.	Staff: - Planning & Building Developers	Ongoing
			Where feasible and appropriate, incorporate "humanizing aspects" such as landscaping and services in existing and planned Municipal developments in Metrotown.	Staff: - Planning & Building - Health - Parks & Recreation - Admin. & Comm. Services Inter-Agency Council	Ongoing
			In reviewing plans for future Metrotown development, encourage developers to incorporate "humanizing aspects", as appropriate e.g. landscaping, change facilities and showers for staff.	Staff: - Planning & Building Developers	Ongoing

METROTOWN SOCIAL PLANNING PROGRAM: MODIFIED 1992 MAY

<u>Subject Area</u>	<u>Issues</u>	<u>Objectives</u>	<u>Action</u>	<u>Key Participants</u>	<u>*Timing</u>	
HUMANIZING ELEMENTS (Continued)	Design, Aesthetics & Density (Continued)	To balance needs for future growth in Metrotown with needs of existing Metrotown community.	Examine the potential social and environmental impacts of future commercial and residential growth in Metrotown and make recommendations as appropriate.	Staff: - Planning & Building - Health - Parks & Recreation School District 41 Community Issues & Social Planning Committee Municipal Council	Long Term	
		Open Space	To promote retention/enhancement of existing green space in Metrotown.	Consult with appropriate Municipal staff regarding improvements to seating in Civic Square by increasing the number of benches and also emphasize the provision of back supports on benches.	Staff: - Planning & Building - Engineering - Library	Immediate
			Consult with Parks and Recreation Department regarding the installation of additional seating in Metrotown parks.	Staff: - Planning & Building - Parks & Recreation	Immediate	
			Consult with appropriate Municipal staff regarding the quality of maintenance in Municipal and private open areas in Metrotown and means of addressing problematic areas.	Staff: - Planning & Building - Engineering	Immediate	
			To increase amount of open, green space in and near Metrotown.	Consult with Parks and Recreation, Legal, Planning and other appropriate staff regarding the acquisition of parkland in and near Metrotown.	Staff: - Planning & Building - Parks & Recreation - Finance - Legal	Ongoing
				In consultation with the Urban Design Planning staff and other appropriate Municipal staff, encourage the inclusion by private developers of appropriate public open space in new developments.	Staff: - Planning & Building Developers	Long Term

<u>Subject Area</u>	<u>Issues</u>	<u>Objectives</u>	<u>Action</u>	<u>Key Participants</u>	<u>*Timing</u>
HUMANIZING ELEMENTS (Continued)	Arts & Cultural Opportunities	To enhance the artistic and cultural environment of Metrotown.	Examine the feasibility of establishing a major cultural facility in Metrotown e.g. performing arts theatre.	Staff: - Planning & Building - Parks & Recreation	Long Term
			Promote increased use of sculpture and other public art in outdoor open spaces in Metrotown.	Staff: - Planning & Building - Parks & Recreation	Ongoing
			Recommend establishment of "feature" spots of cultural/artistic/historical interest e.g. a marker indicating the 123 degree west meridian of longitude which crosses B.C. Parkway just east of Metrotown station; plaques and markers commemorating features of historical significance.	Staff: - Planning & Building - Parks & Recreation	Immediate
			Encourage sponsorship of music concerts at Civic Square.	Staff: - Planning & Building - Library Metrotown Businesses Shopping Centre Management	Immediate
			Examine the feasibility of establishing an artists' market in Metrotown.	Staff: - Planning & Building - Parks & Recreation	Long Term
			Review future development proposals to ensure future development adjacent to the Bob Prittie Metrotown Library is compatible with this public use.	Staff: - Planning & Building - Library	Ongoing

METROTOWN SOCIAL PLANNING PROGRAM: MODIFIED 1992 MAY

<u>Subject Area</u>	<u>Issues</u>	<u>Objectives</u>	<u>Action</u>	<u>Key Participants</u>	<u>*Timing</u>	
HUMANIZING ELEMENTS (Continued)	Arts & Cultural Opportunities (Continued)		Consult with local churches regarding their potential role in promoting arts and cultural opportunities in Metrotown.	Staff: - Planning & Building Churches	Long Term	
		Signage	To ensure provision of adequate signage to assist people in finding their way to and around Metrotown.	Consult with groups representing seniors, disabled persons and the multicultural community regarding signage needs for Municipal developments and services.	Staff: - Planning & Building - Parks & Recreation Network of Burnaby Seniors Premier's Advisory Council for Persons with Disabilities Burnaby Multicultural Society Burnaby Access Awareness Committee	Immediate
				Consult with appropriate Municipal departments regarding feasibility of installing larger, better-illuminated directional and street signage.	Staff: - Planning & Building - Engineering - Finance	Immediate
			Investigate the feasibility of erecting additional signs to direct people to major community amenities.	Staff: - Planning & Building - Engineering - Finance	Immediate	

<u>Subject Area</u>	<u>Issues</u>	<u>Objectives</u>	<u>Action</u>	<u>Key Participants</u>	<u>*Timing</u>
HUMANIZING ELEMENTS (Continued)	Signage (Continued)		Recommend that developers consult with groups representing seniors, disabled persons, and the multicultural community regarding signage needs for their developments.	Staff: - Planning & Building Developers	Ongoing
			Encourage shopping centre management and future developers to include international symbols and colour codes as supplements or alternatives to text in their signage.	Staff: - Planning & Building Developers Shopping Centre Management Canadian Standards Assoc.	Immediate
			Encourage shopping centre management to further integrate signage among the three major Metrotown shopping centres.	Staff: - Planning & Building Shopping Centre Management	Immediate
			Encourage shopping centre management to provide additional maps and directional signage for facilities and services within the centre. e.g. First Aid, Emergency Exits.	Staff: - Planning & Building Shopping Centre Management	Immediate
	Community Identity	To promote the development of a sense of identity and community in Metrotown.	In consultation with the business and residential community in Metrotown and appropriate Municipal departments investigate the possibility of identifying, developing and promoting a theme for Metrotown.	Staff: - Planning & Building - Parks & Recreation Metrotown businesses Metrotown residents Inter-Agency Council	Immediate

METROTOWN SOCIAL PLANNING PROGRAM: MODIFIED 1992 MAY

<u>Subject Area</u>	<u>Issues</u>	<u>Objectives</u>	<u>Action</u>	<u>Key Participants</u>	<u>*Timing</u>
HUMANIZING ELEMENTS (Continued)	Community Identity (Continued)		Encourage street-front/sidewalk/store front activities for designated areas of Metrotown to enliven those streets and attract pedestrians.	Staff: - Planning & Building - Parks & Recreation Metrotown businesses	Ongoing
			In consultation with Metrotown's business and residential communities, examine and encourage a range of possible events or celebrations to stage in Metrotown e.g. annual fair on B.C. Parkway; Metrotown Fun Run; Metrotown Multicultural Festival; Metrotown Summer Festival.	Staff: - Planning & Building - Parks & Recreation Metrotown Businesses Metrotown Residents Inter-Agency Council	Immediate
	Recreation and Entertain- ment Opportun- ities	To ensure provision of a range of passive and active recreation opportunities in Metrotown.	In conjunction with the Parks & Recreation Department, examine the feasibility of establishing additional playgrounds and play area for children e.g. B.C. Parkway, roof deck play areas, neighbourhood parks.	Staff: - Planning & Building - Parks & Recreation - Health B.C. Transit Developers	Long Term
			Promote development of bicycle paths leading to and from Metrotown, especially in a north-south direction.	Staff: - Planning & Building - Engineering	Immediate
		Encourage provision of bicycle lock-up facilities which are within view of buildings and sheltered from the rain.	Staff: - Planning & Building - Parks & Recreation - Library Developers Shopping Centre Management Metrotown Businesses	Immediate	

<u>Subject Area</u>	<u>Issues</u>	<u>Objectives</u>	<u>Action</u>	<u>Key Participants</u>	<u>*Timing</u>
HUMANIZING ELEMENTS (Continued)	Recreation and Entertain- ment Opportun- ities (Continued)		In conjunction with the Urban Design Planning staff, encourage improvements to the SkyTrain/B.C. Parkway corridor to emphasize its role as an outdoor civic element of major importance in Metrotown.	Staff: - Planning & Building - Engineering B.C. Transit	Long Term
			Consult the Parks & Recreation Department regarding the feasibility of providing an ice rink and/or water slide in Metrotown.	Staff: - Planning & Building - Parks & Recreation - Finance	Long Term
			Consult with Parks & Recreation Department regarding possible improvements to facilities at Bonsor Recreation Complex e.g. swimming pool change rooms.	Staff: - Planning & Building - Parks & Recreation	Immediate
			Explore the feasibility of providing quiet, "spiritual" havens in shopping centres.	Staff: - Planning & Building Shopping Centre Management	Long Term
			Examine the feasibility of expanding indoor walking programs in the Metrotown shopping centres.	Staff: - Planning & Building - Parks & Recreation - Health Mall Management	Immedia

METROTOWN SOCIAL PLANNING PROGRAM: MODIFIED 1992 MAY

<u>Subject Area</u>	<u>Issues</u>	<u>Objectives</u>	<u>Action</u>	<u>Key Participants</u>	<u>*Timing</u>
HUMANIZING ELEMENTS (Continued)	Recreation and Entertainment Opportunities (Continued)	To ensure provision of a range of entertainment opportunities in Metrotown.	Consult with local churches regarding their potential role in filling the recreation needs of Metrotown residents and workers.	Staff: - Planning & Building Churches	Long Term
			Through consultation with management of shopping centres, the business community and local churches, encourage the development of additional carefully considered family-oriented entertainment opportunities in Metrotown.	Staff: - Planning & Building - Parks & Recreation Shopping Centre Management Metrotown Businesses Churches	Immediate
			Work with management of Station Square to ensure a balance of entertainment and other opportunities in that complex.	Staff: - Planning & Building Station Square Management	Ongoing
	Shopping Convenience	To promote convenience for shoppers in Metrotown.	Contact management of major shopping centres regarding the possibility of providing complimentary strollers and lockers for checking parcels and coats.	Staff: - Planning & Building Shopping Centre Management	Immediate
			Consult with management of shopping centres regarding the feasibility of providing shopping carts which can be used throughout the centres and, perhaps, off the premises in adjacent residential areas.	Staff: - Planning & Building Shopping Centre Management	Immediate
			Consult with shopping centre management regarding the possibility of extending shopping hours further on weekends.	Staff: - Planning & Building Shopping Centre Management	Immediate
			Encourage management of shopping centres to examine the possibility of grouping shops in theme clusters in the centres.	Staff: - Planning & Building Shopping Centre Management	Immediate

<u>Subject Area</u>	<u>Issues</u>	<u>Objectives</u>	<u>Action</u>	<u>Key Participants</u>	<u>*Timing</u>	
HUMANIZING ELEMENTS (Continued)	Shopping Convenience (Continued)		Encourage department stores to locate store directories at all store entrances.	Staff: - Planning & Building Shopping Centre Management	Immediate	
			Examine feasibility, with the developer and management staff of Metrotown Centre, of constructing a direct entry into Metrotown Centre from Central Boulevard.	Staff: - Planning & Building Metrotown Centre Management Cal Investments	Long Term	
			Encourage management of major shopping centres to examine merits of conducting public tours of centres and their facilities and services.	Staff: - Planning & Building Shopping Centre Management	Immediate	
			Encourage the location of a wider variety of retail and personal service establishments in Metrotown.	Staff: - Planning & Building Developers	Ongoing	
	Licensed Liquor Facilities		Allow a reasoned, balanced distribution of licensed and retail liquor establishments to locate in Metrotown, while ensuring that negative impacts are kept to a minimum.	Monitor impacts of existing liquor facilities in Metrotown.	Staff: - Planning & Building - R.C.M.P.	Ongoing
				Review proposals for additional licensed and retail liquor establishments in Metrotown with respect to consistency with existing liquor facility guidelines and in light of impacts of existing facilities.	Staff: - Planning & Building - R.C.M.P. - License Office	Ongoing
		Gaming Establish- ments	Allow a reasonable number of gaming establishments to locate in and near Metrotown, while ensuring that negative impacts are kept to a minimum.	Monitor impacts of existing gaming establishments in Metrotown and, if appropriate, revise policy guidelines in consultation with appropriate Municipal staff.	Staff: - Planning & Building - R.C.M.P. Inter-Agency Council	Ongoing

METROTOWN SOCIAL PLANNING PROGRAM: MODIFIED 1992 MAY

<u>Subject Area</u>	<u>Issues</u>	<u>Objectives</u>	<u>Action</u>	<u>Key Participants</u>	<u>*Timing</u>
HUMANIZING ELEMENTS (Continued) MOVEMENT	Gaming Establishments (Continued)		Review proposals for additional gaming establishments in and near Metrotown in light of impacts of existing facilities and other research and considerations.	Staff: - Planning & Building - R.C.M.P. - License Office	Ongoing
	Barrier-Free Environment	Facilitate development of an accessible, barrier-free environment in Metrotown.	Consult with the Premier's Advisory Council for Persons with Disabilities, Network of Burnaby Seniors (NOBS), Burnaby Access Awareness Committee (BAAC) and other groups representing disabled persons and seniors in order to ensure that existing and planned Municipal developments and infrastructure in Metrotown are accessible and barrier-free.	Staff: - Planning & Building - Health - Parks & Recreation Network of Burnaby Seniors Premier's Advisory Council for Persons with Disabilities Burnaby Access Awareness Committee	Ongoing
			In conjunction with Burnaby Access Awareness Committee and other groups representing persons with disabilities and Engineering staff, promote and monitor an ongoing Municipal program to install curb cuts.	Staff: - Planning & Building - Engineering Burnaby Access Awareness Committee Network of Burnaby Seniors	Ongoing
			Monitor the provision, location and enforcement of parking stalls designated for persons with disabilities.	Staff: - Planning & Building - R.C.M.P. - Engineering Burnaby Access Awareness Committee	Ongoing
			Promote and monitor installation of audible traffic signals for sight-impaired persons.	Staff: - Planning & Building - Engineering Burnaby Access Awareness Committee	Ongoing

<u>Subject Area</u>	<u>Issues</u>	<u>Objectives</u>	<u>Action</u>	<u>Key Participants</u>	<u>*Timing</u>
MOVEMENT (Continued)	Barrier-Free Environment (Continued)		Encourage developers to consult with the Premier's Advisory Council for Persons with Disabilities, Network of Burnaby Seniors, Burnaby Access Awareness Committee and other groups representing disabled persons and seniors in efforts to make their existing and planned developments accessible and barrier-free.	Staff: - Planning & Building - Health Premier's Advisory Council for Persons with Disabilities Network of Burnaby Seniors Burnaby Access Awareness Committee Developers	Ongoing
			Encourage management of major shopping centres to make additional complimentary wheelchairs available to shoppers.	Staff: - Planning & Building - Health Shopping Centre Management	Immediate
			Consult with management of major shopping centres regarding improving accessibility for persons with disabilities along the Kingsway frontage of their developments.	Staff: - Planning & Building - Health Shopping Centre Management Burnaby Access Awareness Committee	Long Term
			Continue to liaise with management of Station Square regarding the early installation of a lift to enable persons with disabilities to access the pedestrian bridge between Eaton Centre and Station Square.	Staff: - Planning & Building Management of Station Square	Immediate

METROTOWN SOCIAL PLANNING PROGRAM: MODIFIED 1992 MAY

<u>Subject Area</u>	<u>Issues</u>	<u>Objectives</u>	<u>Action</u>	<u>Key Participants</u>	<u>*Timing</u>
MOVEMENT (Continued)	Barrier-Free Environment (Continued)		Investigate current relevant building standards and, if appropriate, encourage developers of office buildings and high rise residential buildings, through the rezoning process, to install elevators large enough to accommodate stretchers.	Staff: - Planning & Building Developers	Ongoing
			In conjunction with Transportation Planning staff, continue to press B.C. Transit to redevelop the passerelle between Metrotown SkyTrain Station and Eaton Centre to facilitate accessibility for persons in wheelchairs.	Staff: - Planning & Building - Engineering B.C. Transit Developers Shopping Centre Management	Immediate
			Consult with management of major shopping centres regarding the possible installation of automatic doors into the centres to improve access for persons with disabilities.	Staff: - Planning & Building - Health Shopping Centre Management	Immediate
			Consult with appropriate Municipal Departments and developers regarding the feasibility of relocating or removing street furniture, trees, signs and telephone poles which are set in sidewalks and other pedestrian areas and which impose major barriers to persons with disabilities.	Staff: - Planning & Building - Engineering Developers Burnaby Access Awareness Committee	Immediate

<u>Subject Area</u>	<u>Issues</u>	<u>Objectives</u>	<u>Action</u>	<u>Key Participants</u>	<u>*Timing</u>
MOVEMENT (Continued)	Barrier Free Environment (Continued)		Coordinate wheelchair tours of Metrotown to raise awareness of barriers for persons with disabilities.	Staff: - Planning & Building - Health Burnaby Access Awareness Committee Shopping Centre Management	Ongoing
			Promote awareness among the Metrotown business community of the needs of persons with disabilities e.g. wide aisles in stores.	Staff: - Planning & Building - Health Metrotown Businesses Burnaby Access Awareness Committee	Ongoing
			Review the use of gridblock on fire lanes and its impact on mobility for those with high heels, strollers, wheelchairs and walkers.	Staff: - Planning & Building - Engineering Burnaby Access Awareness Committee	Long Term
			Consult with B.C. Telephone Company regarding lowering the height at which pay telephones are installed on walls.	Staff: - Planning & Building - Health B.C. Telephone Company	Immediate
			Consult with B.C. Transit regarding lowering the ticket dispensers in SkyTrain Stations.	Staff: - Planning & Building - Health B.C. Transit	Immediate

METROTOWN SOCIAL PLANNING PROGRAM: MODIFIED 1992 MAY

<u>Subject Area</u>	<u>Issues</u>	<u>Objectives</u>	<u>Action</u>	<u>Key Participants</u>	<u>*Timing</u>
MOVEMENT (Continued)	Pedestrian Orientation	To ensure that walking in Metrotown is a safe, convenient and pleasant experience for pedestrians.	Consult with appropriate Municipal staff regarding the feasibility of improving pedestrian crossings by increasing the number of grade-level crosswalks, constructing additional pedestrian over-passes, etc.	Staff: - Planning & Building - Engineering - Finance	Immediate
			Consult with appropriate Municipal staff regarding installation of additional benches and drinking fountains along sidewalks and other walking areas in Metrotown.	Staff: - Planning & Building - Engineering - Finance	Immediate
			Consult with appropriate Municipal staff regarding improvements to and maintenance of sidewalks in Metrotown e.g. uneven pavement, high curbs, narrow sidewalks.	Staff: - Planning & Building - Engineering Burnaby Access Awareness Committee	Immediate
			Encourage and promote with the management of three major shopping centres the establishment of additional pedestrian connectors between the centres.	Staff: - Planning & Building Shopping Centre Management	Long Term
			Promote the construction of dedicated pedestrian walkways in parking lots.	Staff: - Planning & Building Developers	Long Term

<u>Subject Area</u>	<u>Issues</u>	<u>Objectives</u>	<u>Action</u>	<u>Key Participants</u>	<u>*Timing</u>
MOVEMENT (Continued)	Innovative Transportation	To facilitate establishment by private operators of innovative modes of transportation in Metrotown.	Consult with developers and/or businesses in Metrotown regarding options and feasibility for innovative modes of transportation in the Metrotown core to assist people, including those with physical disabilities, in moving about e.g. shuttle service, golf carts, mini-buses, and moving sidewalks.	Staff: - Planning & Building - Engineering - Health Metrotown businesses Developers Shopping Centre Management Burnaby Access Awareness Committee Network of Burnaby Seniors	Long Term
	Public Transit	To ensure convenient and accessible public transit service is available to and around Metrotown.	In conjunction with Transportation Planning staff, continue to monitor transit needs in Metrotown and make recommendations to B.C. Transit, as appropriate.	Staff: - Planning & Building - Health - Engineering Transportation Committee Municipal Council B.C. Transit	Ongoing
			In conjunction with Transportation Planning staff, consult with B.C. Transit regarding improvement in service (timing, location of stops, routing) to Metrotown from North Burnaby, and in particular to Bob Prittie Metrotown Library, Bonsor Recreation Complex, SkyTrain stations and other major Metrotown amenities.	Staff: - Planning & Building B.C. Transit	Immediate

METROTOWN SOCIAL PLANNING PROGRAM: MODIFIED 1992 MAY

<u>Subject Area</u>	<u>Issues</u>	<u>Objectives</u>	<u>Action</u>	<u>Key Participants</u>	<u>*Timing</u>
MOVEMENT (Continued)	Public Transit (Continued)		Investigate options for financing the installation of public washrooms at the Metrotown transit loop.	Staff: - Planning & Building - Finance	Immediate
			In conjunction with Transportation Planning staff, consult with B.C. Transit regarding the provision of space on transit vehicles for storage of parcels and transportation of bicycles.	Staff: - Planning & Building B.C. Transit	Immediate
			Monitor the implementation of wheelchair accessible transit routes and, in conjunction with Transportation Planning, make recommendations to B.C. Transit, as appropriate.	Staff: - Planning & Building - Health B.C. Transit Transportation Committee Municipal Council	Ongoing
			In conjunction with Transportation Planning staff, consult with B.C. Transit regarding the feasibility of establishing a Passenger Pick-up and Drop-off facility at Metrotown SkyTrain Station and a Park 'n Ride facility, possibly serviced by shuttle buses, at or near a Metrotown SkyTrain station.	Staff: - Planning & Building - Engineering B.C. Transit	Long Term
			In conjunction with Transportation Planning staff, monitor the need for the development of the Kingsway SkyTrain station.	Staff: - Planning & Building B.C. Transit	Ongoing

<u>Subject Area</u>	<u>Issues</u>	<u>Objectives</u>	<u>Action</u>	<u>Key Participants</u>	<u>*Timing</u>
MOVEMENT (Continued)	Public Transit (Continued)		Consult with appropriate Municipal departments, shopping centre management, other businesses in Metrotown and B.C. Transit regarding improved distribution of transit schedules.	Staff: - Planning & Building - Parks & Recreation - Health - Admin & Comm. Services - Library Shopping Centre Management Metrotown Businesses B.C. Transit	Immediate
		Traffic Safety	To ensure the safety of pedestrians, cyclists and vehicles traveling in Metrotown.	In consultation with Transportation Planning staff, examine options for making Metrotown more cyclist friendly.	Staff: - Planning & Building - Engineering
			Consult with appropriate Municipal staff regarding monitoring and enforcement of speed limits and maintaining low speeds in and through Metrotown.	Staff: - Planning & Building - R.C.M.P.	Immediate
			Consult with appropriate Municipal staff regarding the possibility of increasing the duration of "walk" lights at pedestrian crossings.	Staff: - Planning & Building - Engineering - Health Burnaby Access Awareness Committee	Long Term
			Consult with appropriate Municipal staff regarding the establishment of additional left-hand turn signals on Kingsway.	Staff: - Planning & Building - Engineering - Finance	Long Term

METROTOWN SOCIAL PLANNING PROGRAM: MODIFIED 1992 MAY

<u>Subject Area</u>	<u>Issues</u>	<u>Objectives</u>	<u>Action</u>	<u>Key Participants</u>	<u>*Timing</u>
CRIME PREVENTION	General	To reduce opportunities for crime through planning and design activities.	Promote the use of Crime Prevention Through Environmental Design (CPTED) principles in the planning of Municipal facilities in Metrotown.	Staff: - Planning & Building - Parks & Recreation - R.C.M.P.	Ongoing
			Prepare a CPTED guideline booklet for distribution to appropriate Municipal staff, developers, architects and the public.	Staff: - Planning & Building - R.C.M.P.	Long Term
			Promote improved street lighting, and, in particular, pedestrian scaled lighting, along B.C. Parkway, in parking lots, on residential streets south of Central Boulevard, near Bonsor, on Imperial and near the SkyTrain stations.	Staff: - Planning & Building - Engineering - R.C.M.P. - Health	Immediate
			In review of development plans for Metrotown, encourage developers and architects to utilize CPTED principles in their designs.	Staff: - Planning & Building - R.C.M.P. Developers Architects	Ongoing
			Consult with developers and appropriate Municipal staff regarding improvements to the lighting in underground parking lots.	Staff: - Planning & Building - Library - Finance Developers Shopping Centre Management	Long Term
			Examine initiatives of other large Canadian municipalities in dealing with crime in shopping centres and core areas.	Staff: - Planning & Building	Long Term

<u>Subject Area</u>	<u>Issues</u>	<u>Objectives</u>	<u>Action</u>	<u>Key Participants</u>	<u>*Timing</u>
CRIME PREVENTION (Continued)	General (Continued)		In conjunction with other Social Planning staff and the R.C.M.P., coordinate a workshop or workshops for Planning & Building Department and other appropriate Municipal staff, on CPTED principles.	Staff: - Planning & Building - R.C.M.P.	Immediate
		To reduce public perception of Metrotown as a high crime area.	In conjunction with R.C.M.P. and other appropriate Municipal staff, liaise with the media to ensure reports on crime in Metrotown are balanced and set within the Municipal and regional context.	Staff: - Planning & Building - Admin. & Comm. Services - R.C.M.P.	Ongoing
			In conjunction with the R.C.M.P. and other appropriate Municipal staff, develop an information strategy to ensure the public is aware of existing crime prevention initiatives in Metrotown.	Staff: - Planning & Building - Admin. & Comm. Services - Parks & Recreation - Health - R.C.M.P.	Immediate
	Police and Security Services	To ensure adequate police and security services are operating in Metrotown.	Monitor crime patterns and demands for police services in Metrotown.	Staff: - Planning & Building - R.C.M.P.	Ongoing
			Consult with R.C.M.P. regarding the feasibility of establishing a staffed detachment and additional patrols in Metrotown, including bicycle and foot patrols.	Staff: - Planning & Building - R.C.M.P.	Long Term

METROTOWN SOCIAL PLANNING PROGRAM: MODIFIED 1992 MAY

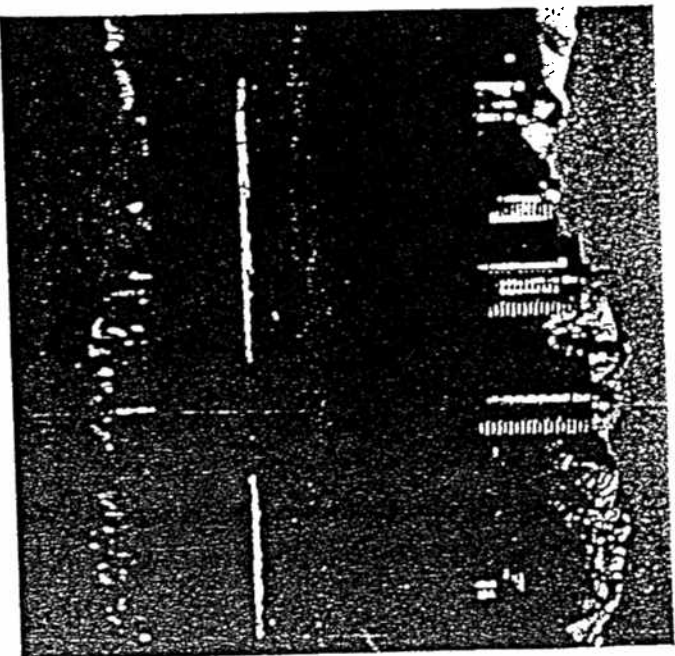
<u>Subject Area</u>	<u>Issues</u>	<u>Objectives</u>	<u>Action</u>	<u>Key Participants</u>	<u>*Timing</u>
CRIME PREVENTION	Police and Security Services (Continued)		Consult with R.C.M.P., shopping centre security and B.C. Transit Security regarding crime potential in and around SkyTrain stations and the Metrotown transit loop.	Staff: - Planning & Building - R.C.M.P. B.C. Transit Shopping Centre Management	Long Term
			Consult with management of the three major shopping centres regarding increased level of security in their centres and underground parking lots.	Staff: - Planning & Building - R.C.M.P. Shopping Centre Management	Immediate
		Community-Based Initiatives	To promote public involvement, where appropriate, in developing and implementing crime prevention initiatives in Metrotown.	In conjunction with the R.C.M.P., investigate options for increasing public awareness of crime potential and identify strategies to involve citizens in helping to reduce crime.	Staff: - Planning & Building - R.C.M.P.
			Consult with R.C.M.P. regarding implementation/expansion of community-based initiatives e.g. Block Watch.	Staff: - Planning & Building - R.C.M.P.	Immediate

EXCERPT TAKEN FROM OFFICIAL COMMUNITY PLAN
FOR BURBABY, ADOPTED BY COUNCIL 1987 DECEMBER

- reject an "across the board" densification of all single and two-family residential neighbourhoods as a means of increasing ground-oriented growth potential
- promote the efficient use of available industrial lands by:
 - i) the use of comprehensive industrial estates as the major form for future industrial growth
 - ii) encouraging an intensification of existing industrial development
- recognize the Big Bend area as the Municipality's major and most significant industrial growth area
- promote high technology, research development in Discovery Parks located adjacent to Simon Fraser University and the British Columbia Institute of Technology
- promote development within the Central Administrative and Willingdon/Freeway suburban office centres
- facilitate development of the Cariboo, Oakalla and Stride lands and thereby add them as significant additions to the residential inventory of the Municipality
- promote the growth of tourist related opportunities within the Municipality.

Protection and Preservation

- divert urban growth away from parks and major open space, conservation, and environmentally sensitive or hazardous areas
- protect the predominantly suburban character of the Municipality's single and two-family residential neighbourhoods
- protect lands within the Agricultural Land Reserve for permitted agricultural and related uses only
- adequately floodproof new urban development within the designated floodplain area of the Municipality



- prohibit expansion of existing or new development which will endanger the health and/or safety of Burnaby residents or unsatisfactorily contribute to air or water pollution.

SOCIAL AND ECONOMIC PERSPECTIVE

The growth strategy for the Municipality recognizes that land use, economic and social planning are linked; the processes should not occur in isolation. While acknowledging that Burnaby has had a good record for incorporating social and economic considerations into its land use plans, the O.C.P. has identified a commitment to and need for making these efforts more explicit. An overview of the social and economic perspectives follows.

FRAMEWORK GOAL - SOCIAL DEVELOPMENT

To develop and maintain a social environment which promotes the physical, social and mental well-being of individuals and families in Burnaby.

prevent or minimize potential future problems.

- **Accessibility**
Neighbourhood environments, public buildings, and services should be accessible to all members of the community, regardless of a person's physical, economic, social or cultural characteristics.
- **Participation**
Citizens should be encouraged and given opportunities to participate in the planning and provision of services, programs, facilities and neighbourhood environments.
- **Independence**
In the provision of services, housing, programs, and facilities, individuals should be encouraged to function at their maximum level of independence.
- **Interdependency**
Individuals should be encouraged to accept some responsibility for their role in promoting the well-being of the community and its members
- **Quality**
Services, programs, facilities, housing and the neighbourhood environment should be of sufficient quality to promote an acceptable standard of physical, emotional and social well being.
- **Appropriateness**
Services, programs, facilities and housing should be of an appropriate type, scale, design, and location for individuals and the community.
- **Co-operation**
Where appropriate, the planning and provision of services, programs, facilities, and housing should be done on a co-operative basis.
- **Efficiency and Effectiveness**
Services, programs, and facilities should be provided in an efficient, effective man-

ner and be evaluated from both a social and economic perspective.

FRAMEWORK GOAL - ECONOMIC DEVELOPMENT

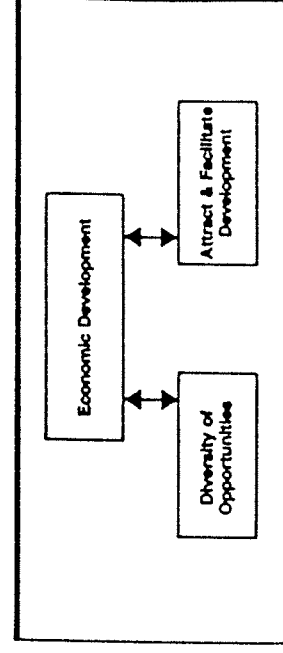
To foster a positive environment that will promote the orderly growth and expansion of business, industry and employment for the overall betterment of the community.

Government, and the private sector are deeply concerned about the need to effectively compete in an increasingly aggressive and technologically rich economy in order to help provide meaningful employment and a high standard of living for the community. Locally, this concern has been heightened by a number of macro-economic trends that have affected the regional economic environment. These trends, which have and will continue to affect all jurisdictions, include slowed economic growth, higher rates of unemployment, and structural shifts towards a more service based economy.

DIRECTIONS

A key to economic growth in Burnaby relates to both the type and amount of development opportunities provided and how they are encouraged, managed and implemented. Within the O.C.P. the economic development approach is organized around two topics:

- diversity of economic development opportunities



- implementation actions to facilitate these opportunities.

