

~~ITEM 19
DIRECTOR'S REPORT NO. 15
COMMISSION MEETING 92/08/05~~

110

RE: B.C HYDRO BEAUTIFICATION PROGRAM REQUEST FOR EASEMENTS WITHIN CENTRAL PARK

RECOMMENDATION:

1. THAT the granting of two easements on a portion of Lot 1 except part on Plan 86669, District Lot 151, Group 1, N.W.D., Plan 3076 (Central Park) in favour of B.C. Hydro & Power Authority be approved under the terms outlined in this report.
2. THAT Council be requested to authorize the execution of the subject easements.

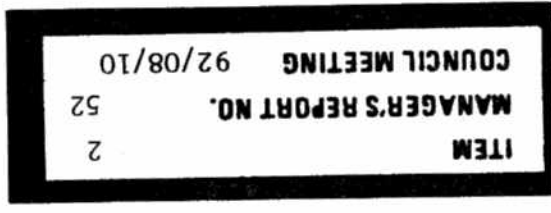
REPORT

The attached report from the Acting Director Planning & Building requests that the Commission authorize the granting of two easements in favour of B.C. Hydro & Power Authority and; that Council be requested to authorize the execution of the subject easements to allow the placement of a switching kiosk and two pad-mounted transformer boxes on land within Central Park. The works are required for a Municipal Beautification Project to remove overhead power lines from Patterson Avenue between Kingsway and the Patterson Skytrain Station.

ATS:tc
Attach.

A/1096

cc: Director Planning & Building (w/o att.)
Municipal Solicitor



THE CORPORATION OF THE DISTRICT OF BURNABY

TO: DIRECTOR RECREATION & CULTURAL SERVICES

1992 July 30

FROM: ACTING DIRECTOR PLANNING AND BUILDING

SUBJECT: B.C. HYDRO BEAUTIFICATION PROGRAM
REQUEST FOR EASEMENTS WITHIN CENTRAL PARKRECOMMENDATIONS:

1. THAT the granting of two easements on a portion of Lot 1 except part on Plan 86669, District Lot 151, Group 1, N.W.D., Plan 3076 (Central Park) in favour of B.C. Hydro & Power Authority be approved under the terms outlined in this report.
2. THAT Council be requested to authorize the execution of the subject easements.

R E P O R T

Over a number of years, the removal of the overhead power lines on Patterson Avenue adjacent Central Park has been actively pursued by the Municipality as a desired beautification project.

Through the B.C. Hydro Beautification program, the Municipality has been successful in receiving cost-sharing for the removal of the major overhead power lines, overhead telephone cables, and utility poles along Patterson Avenue from Kingsway to south of the Patterson skytrain station.

In order for this work to proceed, it is necessary for B.C. Hydro to place a switching kiosk and two pad-mounted transformer boxes on land within Central Park. The proposed equipment is required to service the underground wiring to be installed beneath the roadway on Patterson Avenue, and will also provide underground service to the Jubilee Archway Plaza and Garden to be developed at the corner of Kingsway and Patterson.


For this purpose, B.C. Hydro has requested two small easements on the edge of Central Park as indicated on the attached Sketches #1 and #2.

Staff from the Parks and Recreation Department have been involved in the selection of suitable sites for the proposed installations to ensure that park trees and adjacent park uses are not affected. Lawn areas disturbed by the work will be restored to their original condition.

An existing G.V.W.D. watermain right-of-way is also located along this edge of the park.

In conclusion, it is requested that the Parks and Recreation Commission authorize the granting of two easements in Central Park in favour of B.C. Hydro & Power Authority under the terms outlined in this report, and that Council be requested to authorize the execution of the subject easements.

KR:lf
Attachments
cc: Director Engineering
Municipal Solicitor

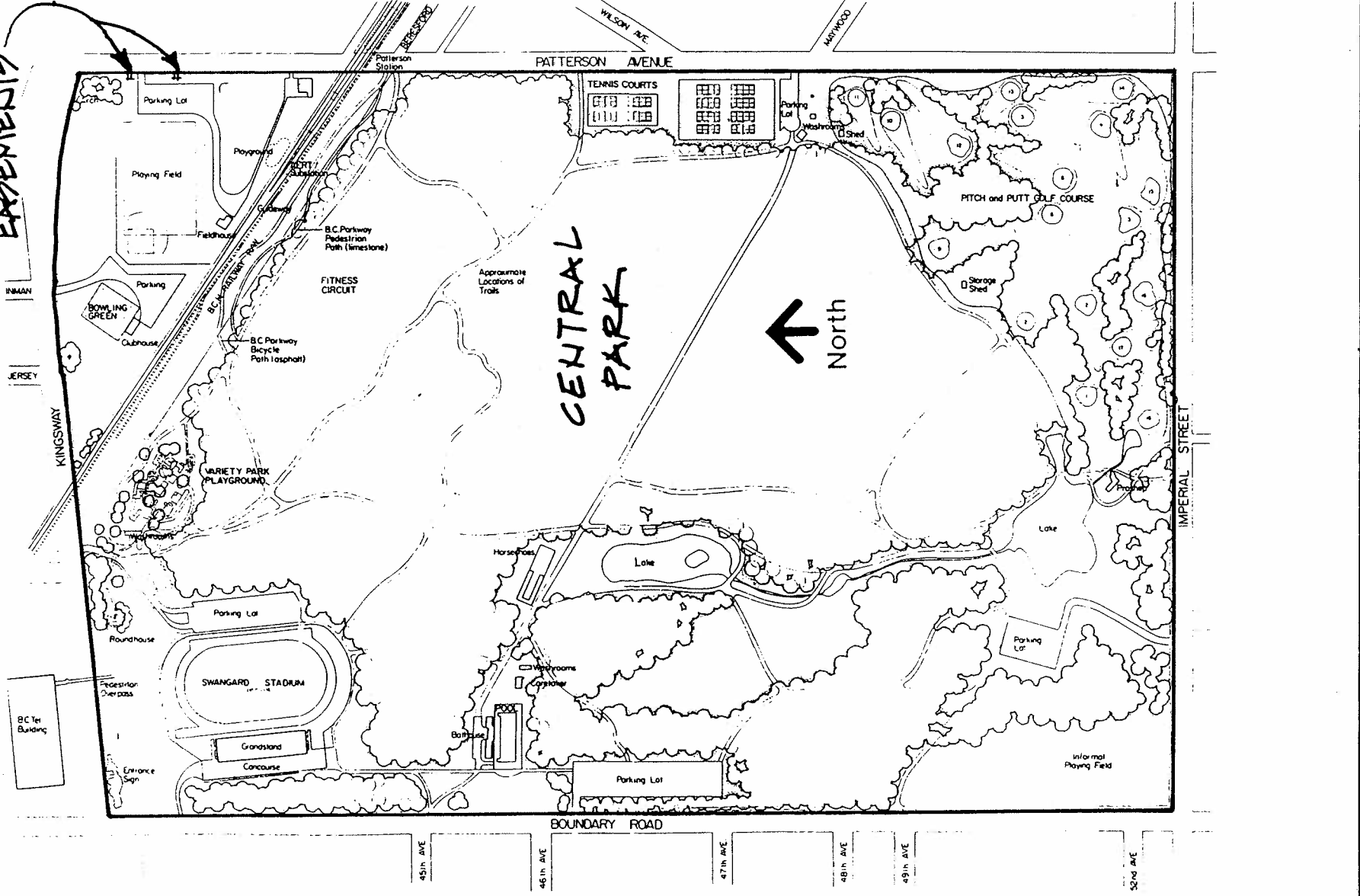

D. G. Stenson
Acting Director
Planning & Building

ITEM 2
MANAGER'S REPORT NO. 52
COUNCIL MEETING 92/08/10

ITEM 19
 DIRECTOR'S REPORT NO. 15
 COMMISSION MEETING 92/08/05

LOCATION OF
 EXHIBENTS

ITEM 2
 MANAGER'S REPORT NO. 52
 COUNCIL MEETING 92/08/10



Date: 12 July 90

Scale: N.T.S.

Drawn By: KR



SKETCH # 1.

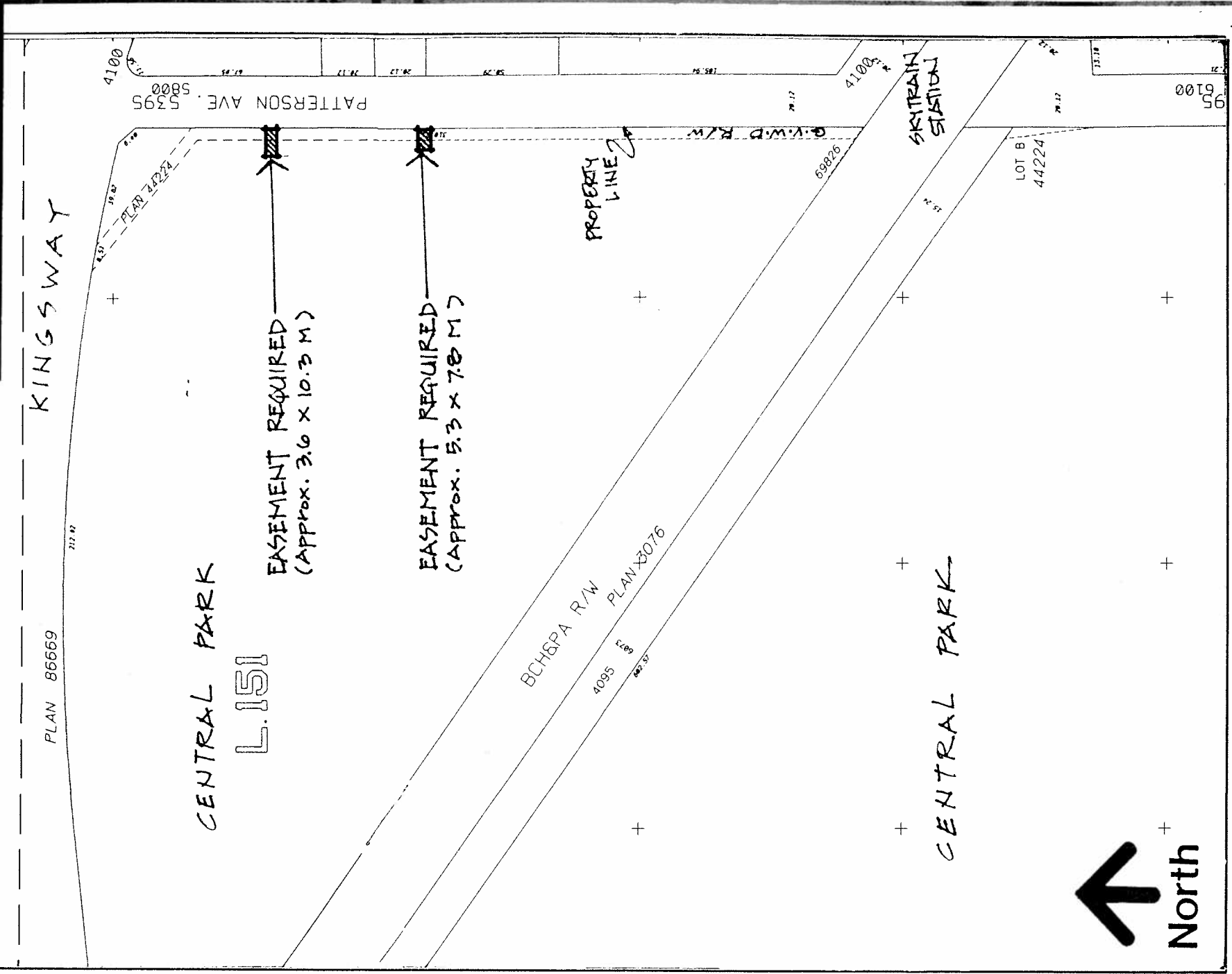
PLAN OF CENTRAL PARK SHOWING
 LOCATION OF EXHIBENTS.

18.24	17.24	17.24	17.24
2	7	6	5
NW2638	2/15	6	582
5965	5977	5987	5997
19.12	19.16	19.18	

COMMISSION MEETING 92/08/05

MANAGER'S REPORT NO. 52
COUNCIL MEETING 92/08/10

2



Date:	92 JUL 29
Scale:	1:2000
Drawn By:	KR



SKETCH # 2. 113

PLAN SHOWING
LOCATION OF EASEMENTS
CENTRAL PARK

