

RE: SOCIAL PLANNING IN METROTOWN - DRAFT POLICY FRAMEWORK

MUNICIPAL MANAGER'S RECOMMENDATIONS:

1. THAT the recommendations of the Director Planning & Building Inspection be adopted.

* * * * *

TO: MUNICIPAL MANAGER 1988 September 13
FROM: DIRECTOR PLANNING & BUILDING INSPECTION Our File: 17.642

SUBJECT: SOCIAL PLANNING IN METROTOWN - DRAFT POLICY FRAMEWORK

PURPOSE: The purpose of this report is to present a draft policy framework for social planning in Metrotown which, when refined, will serve as the basis for future social planning initiatives in the area.

RECOMMENDATIONS:

1. THAT Council authorize staff to meet with the Inter-Agency Council to refine the draft policies regarding social planning in Metrotown, contained in this report, with the refined policies to be presented to Council at a later date.

REPORT

1.0 BACKGROUND

During the summer of 1987, Municipal staff participated in a collaborative social planning process with the Burnaby Inter-Agency Council. The objectives were as follows:

- 1) to review social planning issues pertaining to existing and planned development in Metrotown, and
- 2) to suggest approaches for addressing the issues identified through the process.

Based on the results of the process staff, in consultation with the Inter-Agency Council, prepared the discussion paper, "Social Planning in Metrotown." The discussion paper was distributed to members of Council in 1987 September.

Staff have used the discussion paper as a basis for developing the social services component of the Metrotown Infrastructure Study. Specifically, we expanded and elaborated upon the references to child and adult day care services, storefront Municipal/community service office space, accessibility improvements for the disabled, and possible office space for the RCMP (i.e. space which police officers could use for such functions as preparing reports, conducting interviews, and making phone calls, without having to return to the Detachment office). We have also found the paper valuable for our review of the Burnaby South 2000 project.

While being a useful resource, the discussion paper has no official policy status. In order to advance the initiatives set forth in the paper, staff decided to develop a preliminary set of social planning policies for Metrotown. These policies, which are presented below, were derived from the value statements contained in the discussion paper. They are preliminary policies only. Staff propose to review them with Inter-Agency Council and make revisions, as necessary. We will then present a revised set of policies to Council for adoption.

2.0 POLICY CONTEXT: OFFICIAL COMMUNITY PLAN

The context for all social planning activities in Burnaby - including efforts in Metrotown - is provided by the Official Community Plan, which was adopted by Municipal Council in 1987 December. An excerpt from the OCP regarding social planning is attached as Appendix 1. As indicated in the Appendix, Burnaby's social planning activities fall within three substantive areas: housing, the physical environment, and human services and coordination. They are also guided by thirteen broad principles or values including responsibility, equity and fairness, choice, integration, and prevention.

These substantive areas and principles are intended to apply to municipal-wide rather than area-specific social planning activities. Nonetheless, to varying degrees, these substantive areas and principles are reflected in the Social Planning in Metrotown discussion paper.

3.0 DRAFT POLICY FRAMEWORK

As noted, staff developed the following broad policies in efforts to advance initiatives of the discussion paper. The policies were derived from the value statements contained in the paper, and are intended for discussion purposes only at this point. Additional work will be needed to refine and expand the policies. Additional work will also be needed to determine the appropriate Municipal role in implementing the various policies (e.g. establishing facilities or services, providing funding, or offering support and assistance to others taking action).

Having stated this background context, the draft policies are as follows:

1. Human Services - The Municipality encourages the establishment of an adequate range of human services to meet the needs of those living in, working in, and visiting Metrotown.
2. Housing - The Municipality supports the establishment of a range of housing opportunities in and near Metrotown, including housing for families, special needs groups, and low income households.
3. Humanizing Aspects - The Municipality promotes the development of a social and physical environment that provides opportunities for not only shopping and business activities, but also for relaxation, socialization and passive recreation.
4. Movement - The Municipality promotes the provision of a variety of opportunities for all segments of the population, including those with special needs, to travel to and within Metrotown.

4.0 PROPOSED NEXT STEPS

The above policy statements are very broad. They represent a starting point or framework for more detailed policy development in the future.

Before recommending adoption of the policies, staff intend to consult with the Inter-Agency Council for their comments and suggestions. Based on their input, we will make revisions as deemed appropriate. We will report back to Council with the revised policies at a later date.

To advance the policies, staff will identify a policy development program, in which we specify priority social planning issues that need attention over the next 3 - 5 years. This program will, in essence, form a strategic plan for addressing social planning issues in Metrotown. It will enable us to address the issues on a rational, proactive basis and to avoid adopting an ad hoc approach in dealing with social planning concerns in the area.

With the assistance of the policy development program, we will prepare specific policies or subpolicies for the various priority areas. For example, under the human services policy, we may develop subpolicies concerning the provision of day care spaces or storefront office space for human service agencies. Under the movement policy, we may develop specific subpolicies concerning wheelchair accessibility and barrier free environments. Hence, preparation of a social planning policy for Metrotown will be an incremental process, with various components of the policy being developed on a priority basis over time.

5.0 CONCLUSION

Staff believe that the Social Planning in Metrotown discussion paper identified a range of important social planning initiatives that deserve to be considered in future planning for Metrotown. To advance these initiatives, we have prepared the draft set of social planning policies presented in this report. We intend to review the draft policies with Inter-Agency Council and make revisions, as deemed necessary. We will present the revised policies to Council in the near future.

Staff believe the ongoing development and implementation of social planning policies for Metrotown will provide a vehicle for enhancing the social environment of the area.


A.L. Parr
DIRECTOR PLANNING &
BUILDING INSPECTION

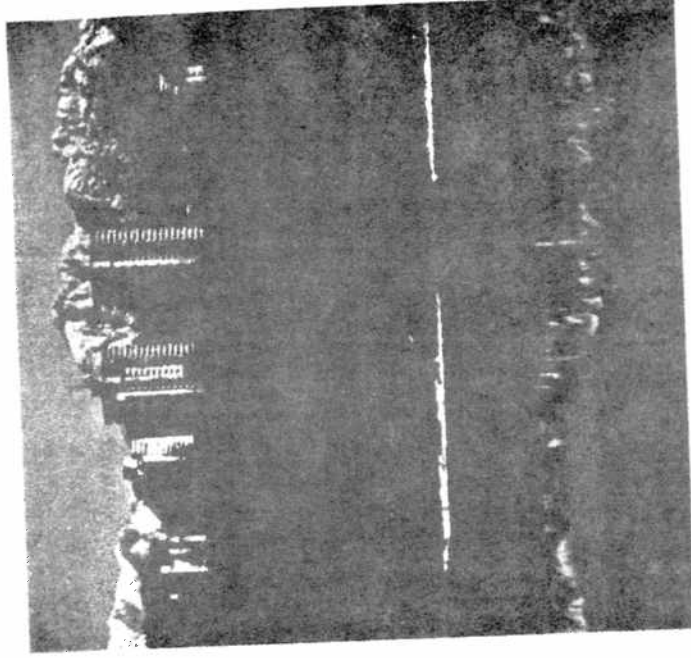
JF/mcb
Attachs:

EXCERPT TAKEN FROM OFFICIAL COMMUNITY PLAN
FOR BURNABY, ADOPTED BY COUNCIL 1987 DECEMBER

- reject an "across the board" densification of all single and two-family residential neighbourhoods as a means of increasing ground-oriented growth potential
- promote the efficient use of available industrial lands by:
 - i) the use of comprehensive industrial estates as the major form for future industrial growth
 - ii) encouraging an intensification of existing industrial development
- recognize the Big Bend area as the Municipality's major and most significant industrial growth area
- promote high technology, research development in Discovery Parks located adjacent to Simon Fraser University and the British Columbia Institute of Technology
- promote development within the Central Administrative and Willingdon/Freeway suburban office centres
- facilitate development of the Cariboo, Oakalla and Stride lands and thereby add them as significant additions to the residential inventory of the Municipality
- promote the growth of tourist related opportunities within the Municipality.

Protection and Preservation

- divert urban growth away from parks and major open space, conservation, and environmentally sensitive or hazardous areas
- protect the predominantly suburban character of the Municipality's single and two-family residential neighbourhoods
- protect lands within the Agricultural Land Reserve for permitted agricultural and related uses only
- adequately floodproof new urban development within the designated floodplain area of the Municipality



- prohibit expansion of existing or new development which will endanger the health and/or safety of Burnaby residents or unsatisfactorily contribute to air or water pollution.

SOCIAL AND ECONOMIC PERSPECTIVE

The growth strategy for the Municipality recognizes that land use, economic and social planning are linked; the processes should not occur in isolation. While acknowledging that Burnaby has had a good record for incorporating social and economic considerations into its land use plans, the O.C.P. has identified a commitment to and need for making these efforts more explicit. An overview of the social and economic perspectives follows.

FRAMEWORK GOAL - SOCIAL DEVELOPMENT

To develop and maintain a social environment which promotes the physical, social and mental well-being of individuals and families in Burnaby.

EXCERPT TAKEN FROM OFFICIAL COMMUNITY PLAN
 FOR BURNABY, ADOPTED BY COUNCIL 1987 DECEMBER

The O.C.P. has responded to a need to address social planning issues in a more comprehensive, systematic fashion in the future. This approach has resulted from the recognition that society's issues and its problems are growing increasingly complex and interrelated. Issues facing the Municipality include:

- a continued total and percentage increase in the 65+ year population



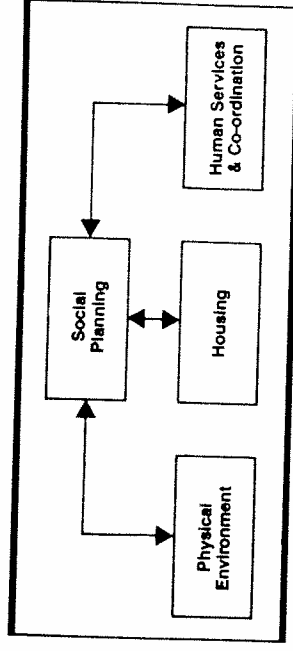
- increasing population and residential densities
- changing family structures and roles (e.g. single parent families, blended families)
- an increasingly mobile and transient population
- an increasing growth in labour force participation of women with children
- an increasingly multicultural, ethnically diverse population
- continued integration of the mentally and physically handicapped into the "mainstream" of the community

- continued economic uncertainty and relatively high unemployment
- limited increases in government funding, creating pressures for service providers to "do more with less"
- rising and increasingly sophisticated expectations from the public.

DIRECTIONS

In addressing the issues identified, the O.C.P.'s social considerations have been integrated with land use and economic factors around three substantive areas:

- physical environment
- housing



- human services and coordination.

In planning for the physical environment, the O.C.P. identifies a need to include a social planning perspective that will maximize the positive and minimize the negative impacts of planned development. With respect to housing, the O.C.P. outlines a social planning role in addressing general market housing and special needs housing requirements. The third substantive area is human services and coordination. From a social perspective, the O.C.P. recognizes that community facilities and human services will continue to play a vital role in enhancing the well-being of individuals and families in Burnaby. Nonetheless, the Municipality also recognizes that on its own, it is not in a position to respond to all the identified needs. In the provision of community facilities and services, the Municipality is recognized as having one or more, or a combination of different roles. In ad-

dition, the Municipality is acknowledged, in some instances, to have to assume an advocate position with others to ensure that local needs are best met.

Each of these identified areas of concern reflect a municipal commitment to the following:

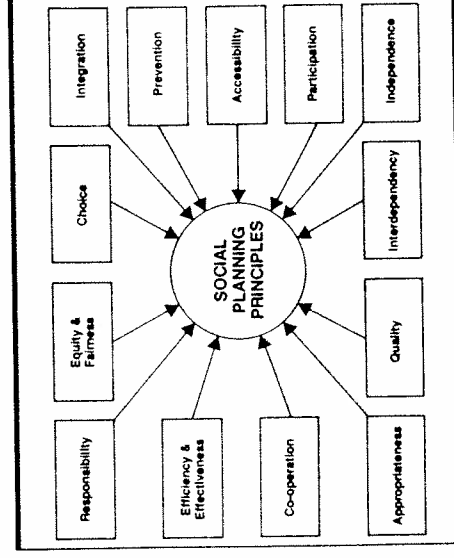
- the importance of adopting an integrated planning approach, incorporating a social perspective into the overall planning of the Municipality
- the necessity of establishing an open and consultative planning process involving municipal departments, senior levels of government, outside agencies, community groups and the general public in determining needs, strategies, and implementation actions
- the need for the Municipality to facilitate and cooperate with senior levels of government and other external funding bodies in the provision of needed human services and housing
- the need to improve the overall level of community awareness of social planning issues.

The Municipality recognizes that it will need to consistently improve its social planning coordination function if it is to adequately respond to social planning issues. In this regard, the Municipality will be establishing an inter-departmental staff working group to address human service and other social planning issues. The staff working group will fulfill two important functions. First, it will provide a vehicle for coordination of the social planning issues facing the Municipality; human services, housing and physical environment. Second, it will increase and improve opportunities for appropriate people inside and outside the municipal structure to be involved in the implementation of the Municipality's social planning goals.

The ongoing development of the desired social environment for the Municipality is founded on a number of basic principles or underlying

values. These principles, while admittedly difficult to quantify and measure, represent a statement of commitment to guide the Municipality's future social planning efforts. They are as follows:

- **Responsibility**
 The Municipality has the responsibility, either statutory or assumed, to facilitate provision of human services, programs, facilities and housing aimed at enhancing the well being of Burnaby residents.
- **Equity and Fairness**
 Services, programs, facilities and housing options should be distributed in a fair and equitable manner.
- **Choice**
 Burnaby residents should be able to choose amongst a variety of services, programs, facilities, neighbourhoods and housing options.
- **Integration**
 Where deemed beneficial to the groups and individuals involved, and respecting the principle of choice, services, programs, facilities and housing should encourage in-



tegration of a range of age, income, ethnic and special need groups.

- **Prevention**
 Services, programs, facilities and housing should be planned in response to anticipated community needs, with an aim to

prevent or minimize potential future problems.

- **Accessibility**
 Neighbourhood environments, public buildings, and services should be accessible to all members of the community, regardless of a person's physical, economic, social or cultural characteristics.
- **Participation**

Citizens should be encouraged and given opportunities to participate in the planning and provision of services, programs, facilities and neighbourhood environments.

- **Independence**

In the provision of services, housing, programs, and facilities, individuals should be encouraged to function at their maximum level of independence.

- **Interdependency**

Individuals should be encouraged to accept some responsibility for their role in promoting the well-being of the community and its members

- **Quality**

Services, programs, facilities, housing and the neighbourhood environment should be of sufficient quality to promote an acceptable standard of physical, emotional and social well being.

- **Appropriateness**

Services, programs, facilities and housing should be of an appropriate type, scale, design, and location for individuals and the community.

- **Co-operation**

Where appropriate, the planning and provision of services, programs, facilities, and housing should be done on a co-operative basis.

- **Efficiency and Effectiveness**

Services, programs, and facilities should be provided in an efficient, effective man-

ner and be evaluated from both a social and economic perspective.

FRAMEWORK GOAL - ECONOMIC DEVELOPMENT

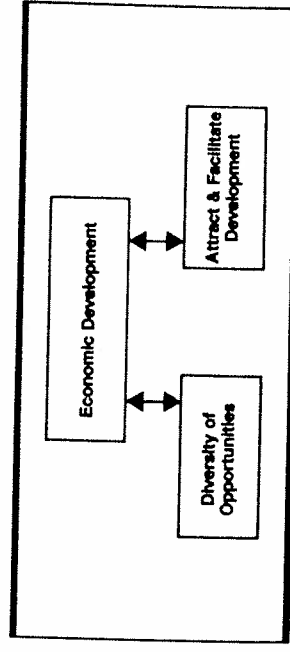
To foster a positive environment that will promote the orderly growth and expansion of business, industry and employment for the overall betterment of the community.

Government, and the private sector are deeply concerned about the need to effectively compete in an increasingly aggressive and technologically rich economy in order to help provide meaningful employment and a high standard of living for the community. Locally, this concern has been heightened by a number of macro-economic trends that have affected the regional economic environment. These trends, which have and will continue to affect all jurisdictions, include slowed economic growth, higher rates of unemployment, and structural shifts towards a more service based economy.

DIRECTIONS

A key to economic growth in Burnaby relates to both the type and amount of development opportunities provided and how they are encouraged, managed and implemented. Within the O.C.P. the economic development approach is organized around two topics:

- diversity of economic development opportunities



- implementation actions to facilitate these opportunities.

