

ITEM 3  
MANAGER'S REPORT NO. 12  
COUNCIL MEETING 88/02/15

RE: LETTER FROM MRS. IRENE PLAYER WHICH APPEARED ON THE AGENDA FOR THE  
1988 FEBRUARY 08TH MEETING OF COUNCIL ( ITEM 4 A )  
TREE REMOVAL ON CONFEDERATION PARK

MUNICIPAL MANAGER'S RECOMMENDATION:

1. THAT the recommendation of the Director Recreation & Cultural Services be adopted.

\* \* \* \* \*

TO: MUNICIPAL MANAGER 1988 February 09

FROM: DIRECTOR RECREATION & CULTURAL SERVICES

RE: LETTER FROM IRENE PLAYER, 36 SOUTH GAMMA AVENUE  
WITH PETITION REQUESTING TREE REMOVAL ON  
CONFEDERATION PARK (ITEM (A) CORRESPONDENCE AND  
PETITIONS, COUNCIL MEETING OF 1988 FEBRUARY 08).

---

RECOMMENDATION:

1. THAT a copy of this report be sent to Mrs. Irene Player, 36 South Gamma Avenue, Burnaby.

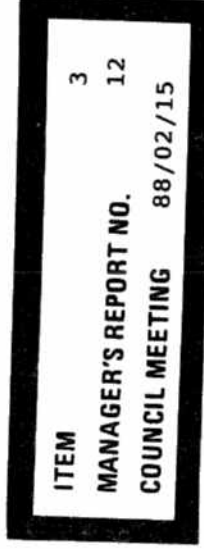
REPORT

Appearing on the Agenda of the Council Meeting of 1988 February 08 under Correspondence and Petitions, was a letter (undated) from Mrs. Irene Player, 36 South Gamma Avenue, Burnaby, together with an attached \*petition (1987 (sic) January 24) requesting that some Cottonwood trees on Confederation Park property be felled. The property on which these trees occur is shown on the attached drawing No. OP 6-1-81s (Attachment #1).

A previous letter had been received by staff from Mr. Tae Houn Kim (1987 December 08), of 4804 Dundas Street, Burnaby, with attached \*petition (1987 November 30). Staff acted on that request early in January of 1988. Inspection revealed a number of dead or potentially dangerous trees and approximately 20 were removed and others trimmed. A forest of approximately 200 trees remain. Following the inspection and prior to removal, the petitioners were advised by letter that we had identified a number of trees which would be removed. The removals and trimming were

\*The names of Irene, William and Jennifer Player appear on both of these petitions.

./....

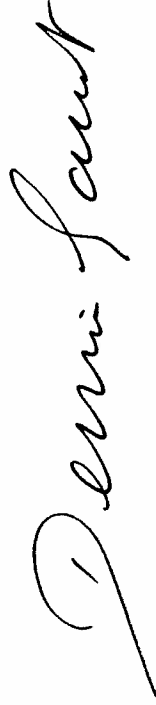


completed by January 12th and debris clean-up took place after that. During the course of this work, several conversations took place between the supervisory staff and the residents on the street. Residents were requesting that other healthy trees be removed. The requests were refused and the practice of the Corporation was explained to them.

107

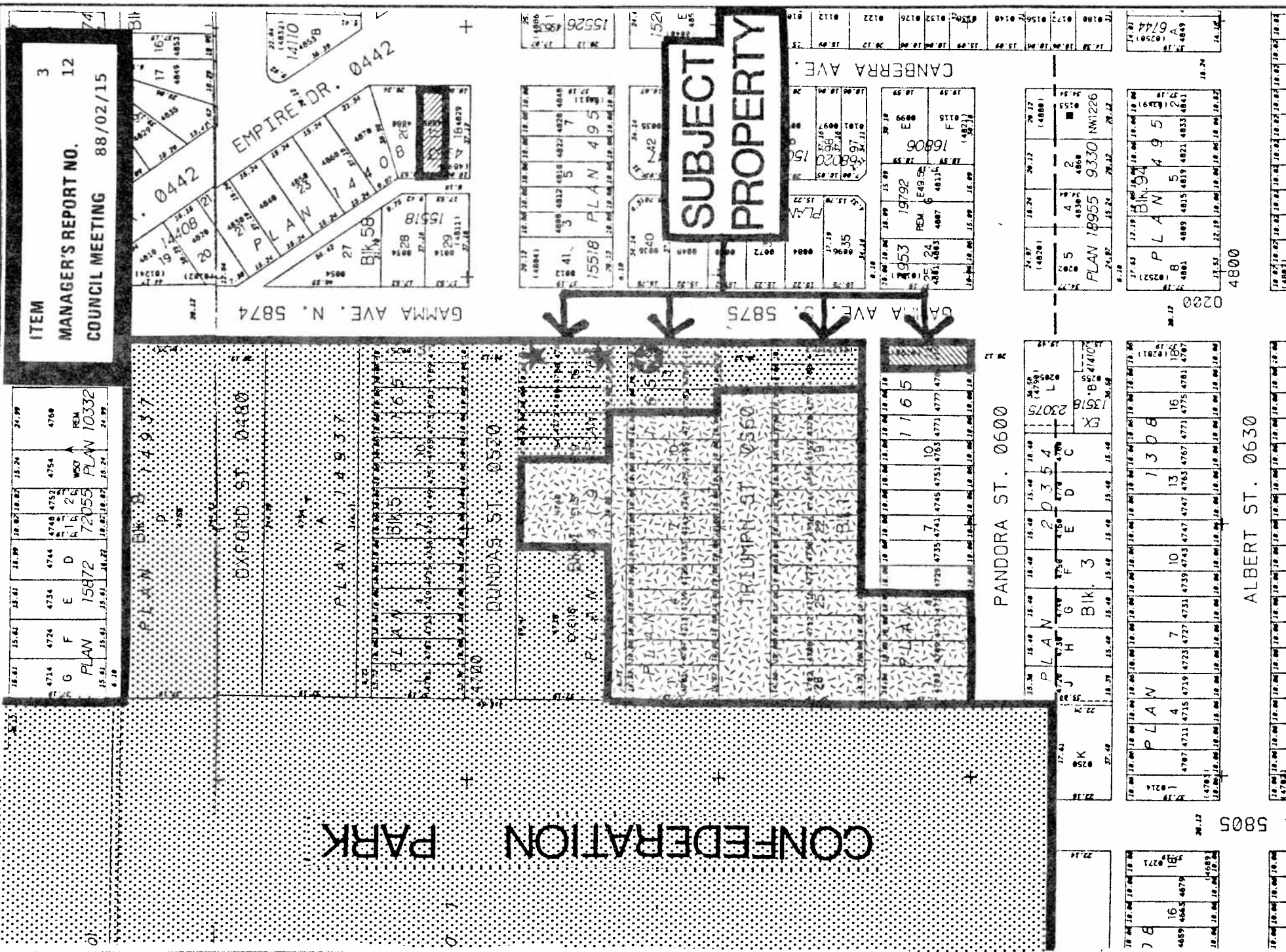
Over a number of years, staff have received requests on a regular basis to have trees on Corporation property topped or removed for reasons similar to those outlined by the petitioners or to allow sunlight into private properties or to provide them with views from private property. The Corporation's practice is that tree removal or tree topping from public property is limited to dead or dangerous trees and thinning out for the protection of desirable species and to facilitate specific recreation activities.

A current review of this forested area arising from the new petition of January 24th indicates that there are no trees on park property that pose a danger to either park patrons or private property or fall within the other guidelines used by the Corporation to support its tree removal practices. The specific trees mentioned in Mrs. Player's letter are healthy and would remain under the current practice. Mrs. Player has been contacted so that there is no misunderstanding regarding which trees are in question and the Corporation practice has been explained to her.



Dennis Gaunt  
Director Recreation & Cultural Services

DG:ka  
Attach.



ITEM 3  
MANAGER'S REPORT NO. 12  
COUNCIL MEETING 88/02/15

4714 4724 4734 4744 4754 4768  
G F E D  
PLAN 15872  
W50  
PLAN 10332  
REM  
24.99

PLAN 74937  
Bik 58

EXPARD ST. 0480

PLAN 74937

PLAN 74937

PLAN 74937

PLAN 74937

PLAN 74937

PLAN 74937

PLAN 74937

PLAN 74937

PLAN 74937

PLAN 74937

PLAN 74937

PLAN 74937

PLAN 74937

PLAN 74937

PLAN 74937

PLAN 74937

PLAN 74937

PLAN 74937

PLAN 74937

PLAN 74937

PLAN 74937

PLAN 74937

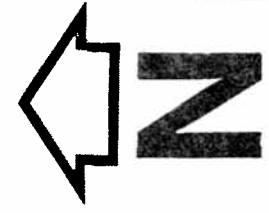
PLAN 74937

PLAN 74937

PLAN 74937

PLAN 74937

PLAN 74937



PARK



SCHOOL



MUNICIPAL

PROJECT

- ★ ONE COTTONWOOD TREE
- ⊙ GROUP OF FOUR COTTONWOOD TREES

DESIGNED BY  
DRAWN BY A.S.  
CHECKED BY  
DATE 88-02-03  
SCALE N.T.S.

108  
BURNABY  
parks & recreation  
department

DRAWING NO.  
OP. #6-1-815  
REV.

78  
16  
4879  
5805

PLAN 7  
4  
7  
10  
13  
16  
18  
19  
20  
21  
22  
23  
24  
25  
26  
27  
28  
29  
30  
31  
32  
33  
34  
35  
36  
37  
38  
39  
40  
41  
42  
43  
44  
45  
46  
47  
48  
49  
50  
51  
52  
53  
54  
55  
56  
57  
58  
59  
60  
61  
62  
63  
64  
65  
66  
67  
68  
69  
70  
71  
72  
73  
74  
75  
76  
77  
78  
79  
80  
81  
82  
83  
84  
85  
86  
87  
88  
89  
90  
91  
92  
93  
94  
95  
96  
97  
98  
99  
100

PLAN 18955 9330 NMT26  
PLAN 19792  
PLAN 15518 495  
PLAN 14408  
PLAN 14110  
PLAN 1408  
PLAN 1399  
PLAN 1398  
PLAN 1397  
PLAN 1396  
PLAN 1395  
PLAN 1394  
PLAN 1393  
PLAN 1392  
PLAN 1391  
PLAN 1390  
PLAN 1389  
PLAN 1388  
PLAN 1387  
PLAN 1386  
PLAN 1385  
PLAN 1384  
PLAN 1383  
PLAN 1382  
PLAN 1381  
PLAN 1380  
PLAN 1379  
PLAN 1378  
PLAN 1377  
PLAN 1376  
PLAN 1375  
PLAN 1374  
PLAN 1373  
PLAN 1372  
PLAN 1371  
PLAN 1370  
PLAN 1369  
PLAN 1368  
PLAN 1367  
PLAN 1366  
PLAN 1365  
PLAN 1364  
PLAN 1363  
PLAN 1362  
PLAN 1361  
PLAN 1360  
PLAN 1359  
PLAN 1358  
PLAN 1357  
PLAN 1356  
PLAN 1355  
PLAN 1354  
PLAN 1353  
PLAN 1352  
PLAN 1351  
PLAN 1350  
PLAN 1349  
PLAN 1348  
PLAN 1347  
PLAN 1346  
PLAN 1345  
PLAN 1344  
PLAN 1343  
PLAN 1342  
PLAN 1341  
PLAN 1340  
PLAN 1339  
PLAN 1338  
PLAN 1337  
PLAN 1336  
PLAN 1335  
PLAN 1334  
PLAN 1333  
PLAN 1332  
PLAN 1331  
PLAN 1330  
PLAN 1329  
PLAN 1328  
PLAN 1327  
PLAN 1326  
PLAN 1325  
PLAN 1324  
PLAN 1323  
PLAN 1322  
PLAN 1321  
PLAN 1320  
PLAN 1319  
PLAN 1318  
PLAN 1317  
PLAN 1316  
PLAN 1315  
PLAN 1314  
PLAN 1313  
PLAN 1312  
PLAN 1311  
PLAN 1310  
PLAN 1309  
PLAN 1308  
PLAN 1307  
PLAN 1306  
PLAN 1305  
PLAN 1304  
PLAN 1303  
PLAN 1302  
PLAN 1301  
PLAN 1300  
PLAN 1299  
PLAN 1298  
PLAN 1297  
PLAN 1296  
PLAN 1295  
PLAN 1294  
PLAN 1293  
PLAN 1292  
PLAN 1291  
PLAN 1290  
PLAN 1289  
PLAN 1288  
PLAN 1287  
PLAN 1286  
PLAN 1285  
PLAN 1284  
PLAN 1283  
PLAN 1282  
PLAN 1281  
PLAN 1280  
PLAN 1279  
PLAN 1278  
PLAN 1277  
PLAN 1276  
PLAN 1275  
PLAN 1274  
PLAN 1273  
PLAN 1272  
PLAN 1271  
PLAN 1270  
PLAN 1269  
PLAN 1268  
PLAN 1267  
PLAN 1266  
PLAN 1265  
PLAN 1264  
PLAN 1263  
PLAN 1262  
PLAN 1261  
PLAN 1260  
PLAN 1259  
PLAN 1258  
PLAN 1257  
PLAN 1256  
PLAN 1255  
PLAN 1254  
PLAN 1253  
PLAN 1252  
PLAN 1251  
PLAN 1250  
PLAN 1249  
PLAN 1248  
PLAN 1247  
PLAN 1246  
PLAN 1245  
PLAN 1244  
PLAN 1243  
PLAN 1242  
PLAN 1241  
PLAN 1240  
PLAN 1239  
PLAN 1238  
PLAN 1237  
PLAN 1236  
PLAN 1235  
PLAN 1234  
PLAN 1233  
PLAN 1232  
PLAN 1231  
PLAN 1230  
PLAN 1229  
PLAN 1228  
PLAN 1227  
PLAN 1226  
PLAN 1225  
PLAN 1224  
PLAN 1223  
PLAN 1222  
PLAN 1221  
PLAN 1220  
PLAN 1219  
PLAN 1218  
PLAN 1217  
PLAN 1216  
PLAN 1215  
PLAN 1214  
PLAN 1213  
PLAN 1212  
PLAN 1211  
PLAN 1210  
PLAN 1209  
PLAN 1208  
PLAN 1207  
PLAN 1206  
PLAN 1205  
PLAN 1204  
PLAN 1203  
PLAN 1202  
PLAN 1201  
PLAN 1200  
PLAN 1199  
PLAN 1198  
PLAN 1197  
PLAN 1196  
PLAN 1195  
PLAN 1194  
PLAN 1193  
PLAN 1192  
PLAN 1191  
PLAN 1190  
PLAN 1189  
PLAN 1188  
PLAN 1187  
PLAN 1186  
PLAN 1185  
PLAN 1184  
PLAN 1183  
PLAN 1182  
PLAN 1181  
PLAN 1180  
PLAN 1179  
PLAN 1178  
PLAN 1177  
PLAN 1176  
PLAN 1175  
PLAN 1174  
PLAN 1173  
PLAN 1172  
PLAN 1171  
PLAN 1170  
PLAN 1169  
PLAN 1168  
PLAN 1167  
PLAN 1166  
PLAN 1165  
PLAN 1164  
PLAN 1163  
PLAN 1162  
PLAN 1161  
PLAN 1160  
PLAN 1159  
PLAN 1158  
PLAN 1157  
PLAN 1156  
PLAN 1155  
PLAN 1154  
PLAN 1153  
PLAN 1152  
PLAN 1151  
PLAN 1150  
PLAN 1149  
PLAN 1148  
PLAN 1147  
PLAN 1146  
PLAN 1145  
PLAN 1144  
PLAN 1143  
PLAN 1142  
PLAN 1141  
PLAN 1140  
PLAN 1139  
PLAN 1138  
PLAN 1137  
PLAN 1136  
PLAN 1135  
PLAN 1134  
PLAN 1133  
PLAN 1132  
PLAN 1131  
PLAN 1130  
PLAN 1129  
PLAN 1128  
PLAN 1127  
PLAN 1126  
PLAN 1125  
PLAN 1124  
PLAN 1123  
PLAN 1122  
PLAN 1121  
PLAN 1120  
PLAN 1119  
PLAN 1118  
PLAN 1117  
PLAN 1116  
PLAN 1115  
PLAN 1114  
PLAN 1113  
PLAN 1112  
PLAN 1111  
PLAN 1110  
PLAN 1109  
PLAN 1108  
PLAN 1107  
PLAN 1106  
PLAN 1105  
PLAN 1104  
PLAN 1103  
PLAN 1102  
PLAN 1101  
PLAN 1100  
PLAN 1099  
PLAN 1098  
PLAN 1097  
PLAN 1096  
PLAN 1095  
PLAN 1094  
PLAN 1093  
PLAN 1092  
PLAN 1091  
PLAN 1090  
PLAN 1089  
PLAN 1088  
PLAN 1087  
PLAN 1086  
PLAN 1085  
PLAN 1084  
PLAN 1083  
PLAN 1082  
PLAN 1081  
PLAN 1080  
PLAN 1079  
PLAN 1078  
PLAN 1077  
PLAN 1076  
PLAN 1075  
PLAN 1074  
PLAN 1073  
PLAN 1072  
PLAN 1071  
PLAN 1070  
PLAN 1069  
PLAN 1068  
PLAN 1067  
PLAN 1066  
PLAN 1065  
PLAN 1064  
PLAN 1063  
PLAN 1062  
PLAN 1061  
PLAN 1060  
PLAN 1059  
PLAN 1058  
PLAN 1057  
PLAN 1056  
PLAN 1055  
PLAN 1054  
PLAN 1053  
PLAN 1052  
PLAN 1051  
PLAN 1050  
PLAN 1049  
PLAN 1048  
PLAN 1047  
PLAN 1046  
PLAN 1045  
PLAN 1044  
PLAN 1043  
PLAN 1042  
PLAN 1041  
PLAN 1040  
PLAN 1039  
PLAN 1038  
PLAN 1037  
PLAN 1036  
PLAN 1035  
PLAN 1034  
PLAN 1033  
PLAN 1032  
PLAN 1031  
PLAN 1030  
PLAN 1029  
PLAN 1028  
PLAN 1027  
PLAN 1026  
PLAN 1025  
PLAN 1024  
PLAN 1023  
PLAN 1022  
PLAN 1021  
PLAN 1020  
PLAN 1019  
PLAN 1018  
PLAN 1017  
PLAN 1016  
PLAN 1015  
PLAN 1014  
PLAN 1013  
PLAN 1012  
PLAN 1011  
PLAN 1010  
PLAN 1009  
PLAN 1008  
PLAN 1007  
PLAN 1006  
PLAN 1005  
PLAN 1004  
PLAN 1003  
PLAN 1002  
PLAN 1001  
PLAN 1000  
PLAN 999  
PLAN 998  
PLAN 997  
PLAN 996  
PLAN 995  
PLAN 994  
PLAN 993  
PLAN 992  
PLAN 991  
PLAN 990  
PLAN 989  
PLAN 988  
PLAN 987  
PLAN 986  
PLAN 985  
PLAN 984  
PLAN 983  
PLAN 982  
PLAN 981  
PLAN 980  
PLAN 979  
PLAN 978  
PLAN 977  
PLAN 976  
PLAN 975  
PLAN 974  
PLAN 973  
PLAN 972  
PLAN 971  
PLAN 970  
PLAN 969  
PLAN 968  
PLAN 967  
PLAN 966  
PLAN 965  
PLAN 964  
PLAN 963  
PLAN 962  
PLAN 961  
PLAN 960  
PLAN 959  
PLAN 958  
PLAN 957  
PLAN 956  
PLAN 955  
PLAN 954  
PLAN 953  
PLAN 952  
PLAN 951  
PLAN 950  
PLAN 949  
PLAN 948  
PLAN 947  
PLAN 946  
PLAN 945  
PLAN 944  
PLAN 943  
PLAN 942  
PLAN 941  
PLAN 940  
PLAN 939  
PLAN 938  
PLAN 937  
PLAN 936  
PLAN 935  
PLAN 934  
PLAN 933  
PLAN 932  
PLAN 931  
PLAN 930  
PLAN 929  
PLAN 928  
PLAN 927  
PLAN 926  
PLAN 925  
PLAN 924  
PLAN 923  
PLAN 922  
PLAN 921  
PLAN 920  
PLAN 919  
PLAN 918  
PLAN 917  
PLAN 916  
PLAN 915  
PLAN 914  
PLAN 913  
PLAN 912  
PLAN 911  
PLAN 910  
PLAN 909  
PLAN 908  
PLAN 907  
PLAN 906  
PLAN 905  
PLAN 904  
PLAN 903  
PLAN 902  
PLAN 901  
PLAN 900  
PLAN 899  
PLAN 898  
PLAN 897  
PLAN 896  
PLAN 895  
PLAN 894  
PLAN 893  
PLAN 892  
PLAN 891  
PLAN 890  
PLAN 889  
PLAN 888  
PLAN 887  
PLAN 886  
PLAN 885  
PLAN 884  
PLAN 883  
PLAN 882  
PLAN 881  
PLAN 880  
PLAN 879  
PLAN 878  
PLAN 877  
PLAN 876  
PLAN 875  
PLAN 874  
PLAN 873  
PLAN 872  
PLAN 871  
PLAN 870  
PLAN 869  
PLAN 868  
PLAN 867  
PLAN 866  
PLAN 865  
PLAN 864  
PLAN 863  
PLAN 862  
PLAN 861  
PLAN 860  
PLAN 859  
PLAN 858  
PLAN 857  
PLAN 856  
PLAN 855  
PLAN 854  
PLAN 853  
PLAN 852  
PLAN 851  
PLAN 850  
PLAN 849  
PLAN 848  
PLAN 847  
PLAN 846  
PLAN 845  
PLAN 844  
PLAN 843  
PLAN 842  
PLAN 841  
PLAN 840  
PLAN 839  
PLAN 838  
PLAN 837  
PLAN 836  
PLAN 835  
PLAN 834  
PLAN 833  
PLAN 832  
PLAN 831  
PLAN 830  
PLAN 829  
PLAN 828  
PLAN 827  
PLAN 826  
PLAN 825  
PLAN 824  
PLAN 823  
PLAN 822  
PLAN 821  
PLAN 820  
PLAN 819  
PLAN 818  
PLAN 817  
PLAN 816  
PLAN 815  
PLAN 814  
PLAN 813  
PLAN 812  
PLAN 811  
PLAN 810  
PLAN 809  
PLAN 808  
PLAN 807  
PLAN 806  
PLAN 805  
PLAN 804  
PLAN 803  
PLAN 802  
PLAN 801  
PLAN 800  
PLAN 799  
PLAN 798  
PLAN 797  
PLAN 796  
PLAN 795  
PLAN 794  
PLAN 793  
PLAN 792  
PLAN 791  
PLAN 790  
PLAN 789  
PLAN 788  
PLAN 787  
PLAN 786  
PLAN 785  
PLAN 784  
PLAN 783  
PLAN 782  
PLAN 781  
PLAN 780  
PLAN 779  
PLAN 778  
PLAN 777  
PLAN 776  
PLAN 775  
PLAN 774  
PLAN 773  
PLAN 772  
PLAN 771  
PLAN 770  
PLAN 769  
PLAN 768  
PLAN 767  
PLAN 766  
PLAN 765  
PLAN 764  
PLAN 763  
PLAN 762  
PLAN 761  
PLAN 760  
PLAN 759  
PLAN 758  
PLAN 757  
PLAN 756  
PLAN 755  
PLAN 754  
PLAN 753  
PLAN 752  
PLAN 751  
PLAN 750  
PLAN 749  
PLAN 748  
PLAN 747  
PLAN 746  
PLAN 745  
PLAN 744  
PLAN 743  
PLAN 742  
PLAN 741  
PLAN 740  
PLAN 739  
PLAN 738  
PLAN 737  
PLAN 736  
PLAN 735  
PLAN 734  
PLAN 733  
PLAN 732  
PLAN 731  
PLAN 730  
PLAN 729  
PLAN 728  
PLAN 727  
PLAN 726  
PLAN 725  
PLAN 724  
PLAN 723  
PLAN 722  
PLAN 721  
PLAN 720  
PLAN 719  
PLAN 718  
PLAN 717  
PLAN 716  
PLAN 715  
PLAN 714  
PLAN 713  
PLAN 712  
PLAN 711  
PLAN 710  
PLAN 709  
PLAN 708  
PLAN 707  
PLAN 706  
PLAN 705  
PLAN 704  
PLAN 703  
PLAN 702  
PLAN 701  
PLAN 700  
PLAN 699  
PLAN 698  
PLAN 697  
PLAN 696  
PLAN 695  
PLAN 694  
PLAN 693  
PLAN 692  
PLAN 691  
PLAN 690  
PLAN 689  
PLAN 688  
PLAN 687  
PLAN 686  
PLAN 685  
PLAN 684  
PLAN 683  
PLAN 682  
PLAN 681  
PLAN 680  
PLAN 679  
PLAN 678  
PLAN 677  
PLAN 676  
PLAN 675  
PLAN 674  
PLAN 673  
PLAN 672  
PLAN 671  
PLAN 670  
PLAN 669  
PLAN 668  
PLAN 667  
PLAN 666  
PLAN 665  
PLAN 664  
PLAN 663  
PLAN 662  
PLAN 661  
PLAN 660  
PLAN 659  
PLAN 658  
PLAN 657  
PLAN 656  
PLAN 655  
PLAN 654  
PLAN 653  
PLAN 652  
PLAN 651  
PLAN 650  
PLAN 649  
PLAN 648  
PLAN 647  
PLAN 646  
PLAN 645  
PLAN 644  
PLAN 643  
PLAN 642  
PLAN 641  
PLAN 640  
PLAN 639  
PLAN 638  
PLAN 637  
PLAN 636  
PLAN 635  
PLAN 634  
PLAN 633  
PLAN 632  
PLAN 631  
PLAN 630  
PLAN 629  
PLAN 628  
PLAN 627  
PLAN 626  
PLAN 625  
PLAN 624  
PLAN 623  
PLAN 622  
PLAN 621  
PLAN 620  
PLAN 619  
PLAN 618  
PLAN 617  
PLAN 616  
PLAN 615  
PLAN 614  
PLAN 613  
PLAN 612  
PLAN 611  
PLAN 610  
PLAN 609  
PLAN 608  
PLAN 607  
PLAN 606  
PLAN 605  
PLAN 604  
PLAN 603  
PLAN 602  
PLAN 601  
PLAN 600  
PLAN 599  
PLAN 598  
PLAN 597  
PLAN 596  
PLAN 595  
PLAN 594  
PLAN 593  
PLAN 592  
PLAN 591  
PLAN 590  
PLAN 589  
PLAN 588  
PLAN 587  
PLAN 586  
PLAN 585  
PLAN 584  
PLAN 583  
PLAN 582  
PLAN 581  
PLAN 580  
PLAN 579  
PLAN 578  
PLAN 577  
PLAN 576  
PLAN 575  
PLAN 574  
PLAN 573  
PLAN 572  
PLAN 571  
PLAN 570  
PLAN 569  
PLAN 568  
PLAN 567  
PLAN 566  
PLAN 565  
PLAN 564  
PLAN 563  
PLAN 562  
PLAN 561  
PLAN 560  
PLAN 559  
PLAN 558  
PLAN 557  
PLAN 556  
PLAN 555  
PLAN 554  
PLAN 553  
PLAN 552  
PLAN 551  
PLAN 550  
PLAN 549  
PLAN 548  
PLAN 547  
PLAN 546  
PLAN 545  
PLAN 544  
PLAN 543  
PLAN 542  
PLAN 541  
PLAN 540  
PLAN 539  
PLAN 538  
PLAN 537  
PLAN 536  
PLAN 535  
PLAN 534  
PLAN 533  
PLAN 532  
PLAN 531  
PLAN 530  
PLAN 529  
PLAN 528  
PLAN 527  
PLAN 526  
PLAN 525  
PLAN 524  
PLAN 523  
PLAN 522  
PLAN 521  
PLAN 520  
PLAN 519  
PLAN 518  
PLAN 517  
PLAN 516  
PLAN 515  
PLAN 514  
PLAN 513  
PLAN 512  
PLAN 511  
PLAN 510  
PLAN 509  
PLAN 508  
PLAN 507  
PLAN 506  
PLAN 505  
PLAN 504  
PLAN 503  
PLAN 502  
PLAN 501  
PLAN 500  
PLAN 499  
PLAN 498  
PLAN 497  
PLAN 496  
PLAN 495  
PLAN 494  
PLAN 493  
PLAN 492  
PLAN 491  
PLAN 490  
PLAN 489  
PLAN 488  
PLAN 487  
PLAN 486  
PLAN 485  
PLAN 484  
PLAN 483  
PLAN 482  
PLAN 481  
PLAN 480  
PLAN 479  
PLAN 478  
PLAN 477  
PLAN 476  
PLAN 475  
PLAN 474  
PLAN 473  
PLAN 472  
PLAN 471  
PLAN 470  
PLAN 469  
PLAN 468  
PLAN 467  
PLAN 466  
PLAN 465  
PLAN 464  
PLAN 463  
PLAN 462  
PLAN 461  
PLAN 460  
PLAN 459  
PLAN 458  
PLAN 457  
PLAN 456  
PLAN 455  
PLAN 454  
PLAN 453  
PLAN 452  
PLAN 451  
PLAN 450  
PLAN 449  
PLAN 448  
PLAN 447  
PLAN 446  
PLAN 445  
PLAN 444  
PLAN 443  
PLAN 442  
PLAN 441  
PLAN 440  
PLAN 439  
PLAN 438  
PLAN 437  
PLAN 436  
PLAN 435  
PLAN 434  
PLAN 433  
PLAN 432  
PLAN 431  
PLAN 430  
PLAN 429  
PLAN 428  
PLAN 427  
PLAN 426  
PLAN 425  
PLAN 424  
PLAN 423  
PLAN 422  
PLAN 421  
PLAN 420  
PLAN 419  
PLAN 418  
PLAN 417  
PLAN 416  
PLAN 415  
PLAN 414  
PLAN 413  
PLAN 412  
PLAN 411  
PLAN 410  
PLAN 409  
PLAN 408  
PLAN 407  
PLAN 406  
PLAN 405  
PLAN 404  
PLAN 403  
PLAN 402  
PLAN 401  
PLAN 400  
PLAN 399  
PLAN 398  
PLAN 397  
PLAN 396  
PLAN 395  
PLAN 394  
PLAN 393  
PLAN 392  
PLAN 391  
PLAN 390  
PLAN 389  
PLAN 388  
PLAN 387  
PLAN 386  
PLAN 385  
PLAN 384  
PLAN 383  
PLAN 382  
PLAN 381  
PLAN 380  
PLAN 379  
PLAN 378  
PLAN 377  
PLAN 376  
PLAN 375  
PLAN 374  
PLAN 373  
PLAN 372  
PLAN 371  
PLAN 370  
PLAN 369  
PLAN 368  
PLAN 367  
PLAN 366  
PLAN 365  
PLAN 364  
PLAN 363  
PLAN 362  
PLAN 361  
PLAN 360  
PLAN 359  
PLAN 358  
PLAN 357  
PLAN 356  
PLAN 355  
PLAN 354  
PLAN 353  
PLAN 352  
PLAN 351  
PLAN 350  
PLAN 349  
PLAN 348  
PLAN 347  
PLAN 346  
PLAN 345  
PLAN 344  
PLAN 343  
PLAN 342  
PLAN 341  
PLAN 340  
PLAN 339  
PLAN 338  
PLAN 337  
PLAN 336  
PLAN 335  
PLAN 334  
PLAN 333  
PLAN 332  
PLAN 331  
PLAN 330  
PLAN 329  
PLAN 328  
PLAN 327  
PLAN 326  
PLAN 325  
PLAN 324  
PLAN 323  
PLAN 322  
PLAN 321  
PLAN 320  
PLAN 319  
PLAN 318  
PLAN 317  
PLAN 316  
PLAN 315  
PLAN 314  
PLAN 313  
PLAN 312  
PLAN 311  
PLAN 310  
PLAN 309  
PLAN 308  
PLAN 307  
PLAN 306  
PLAN 305  
PLAN 304  
PLAN 303  
PLAN 302  
PLAN 301  
PLAN 300  
PLAN 299  
PLAN 298  
PLAN 297  
PLAN 296  
PLAN 295  
PLAN 294  
PLAN 293  
PLAN 292  
PLAN 291  
PLAN 290  
PLAN 289  
PLAN 288  
PLAN 287  
PLAN 286  
PLAN 285  
PLAN 284  
PLAN 283  
PLAN 282  
PLAN 281  
PLAN 280  
PLAN 279  
PLAN 278  
PLAN 277  
PLAN 276  
PLAN 275  
PLAN 274  
PLAN 273  
PLAN 272  
PLAN 271  
PLAN 270  
PLAN 269  
PLAN 268  
PLAN 267  
PLAN 266  
PLAN 265  
PLAN 264  
PLAN 263  
PLAN 262  
PLAN 261  
PLAN 260  
PLAN 259  
PLAN 258  
PLAN 257  
PLAN 256  
PLAN 255  
PLAN 254  
PLAN 253  
PLAN 252  
PLAN 251  
PLAN 250  
PLAN 249  
PLAN 248  
PLAN 247  
PLAN 246  
PLAN 245  
PLAN 244  
PLAN 243  
PLAN 242  
PLAN 241  
PLAN 240  
PLAN 239  
PLAN 238  
PLAN 237  
PLAN 236  
PLAN 235  
PLAN 234  
PLAN 233  
PLAN 232  
PLAN 231  
PLAN

