

Sale of Municipal Property
February 11, 1986 Page 2

These lots were advertised as follows:

Vancouver Sun Newspaper

Friday, January 24, 1986
Saturday, January 25, 1986
Friday, January 31, 1986
Saturday, February 1, 1986

The Province Newspaper

Friday, January 24, 1986
Saturday, January 26, 1986
Friday, January 31, 1986
Saturday, February 2, 1986

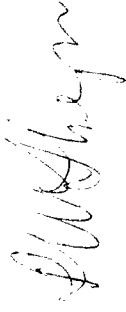
Bids closed on Friday, February 7, 1986 at 4:00 p.m. As a result of these advertisements the following bids were received:

<u>BID NO.</u>	<u>NAME</u>	<u>LOT NO.</u>	<u>UPSET PRICE</u>	<u>BID</u>
1	Trevisan	152 - Parker St.	\$73,000.00	\$74,550.00*
2	Conte	310 - Harken Dr.	79,500.00	82,035.00*
3	Blackwell	310 - Harken Dr.	79,500.00	79,500.00
4	Shehadeh	270 - Preston Cr.	77,000.00	78,000.00*

* Highest bids received

Total bids received - 4
Successful bids received - 3
Average Sale Price - \$ 78,195
Total Sales - \$234,585

The Harken Drive Subdivision is now completely sold. There is one lot left in the Ednor/Preston Subdivision, four lots left in the Parker/Holdom Subdivision and eight lots remain for sale in the Camrose Subdivision.



Patricia W. Flieger
Municipal Solicitor

DS:mc
Attach

c.c. Director Administrative & Community Services
Director Engineering
Director Finance
Director Planning & Building Inspection
Director Recreation & Cultural Services

For Post set.
witness.

HARKEN DRIVE SUB'D.

ITEM	6
MANAGER'S REPORT NO.	12
COUNCIL MEETING	86/02/17

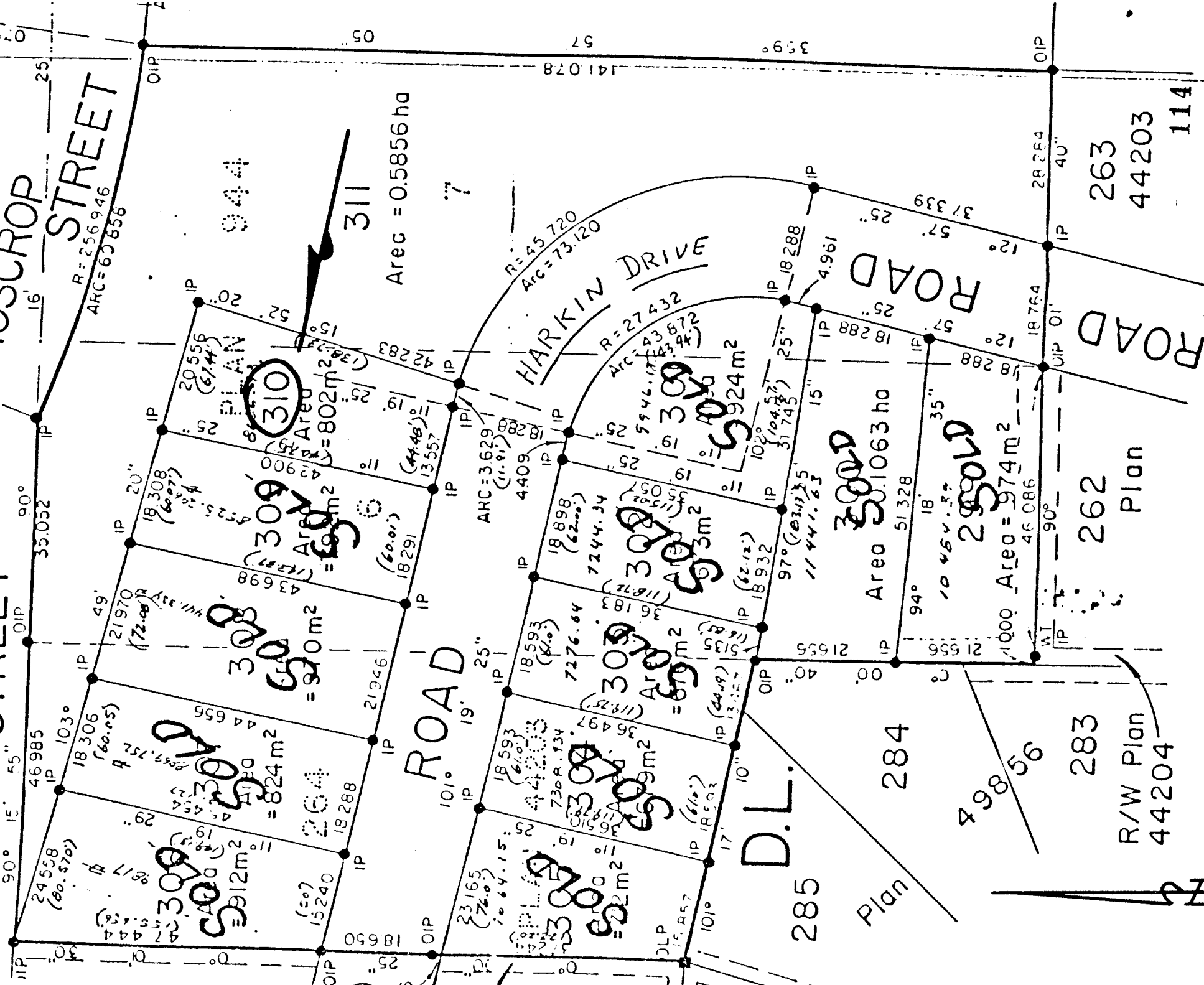
D.L. 72

Plan 3059

MILPIN STREET

MOSCROP STREET

16' 25'
 R=256946
 ARC=60858



Arec = 0.5856ha

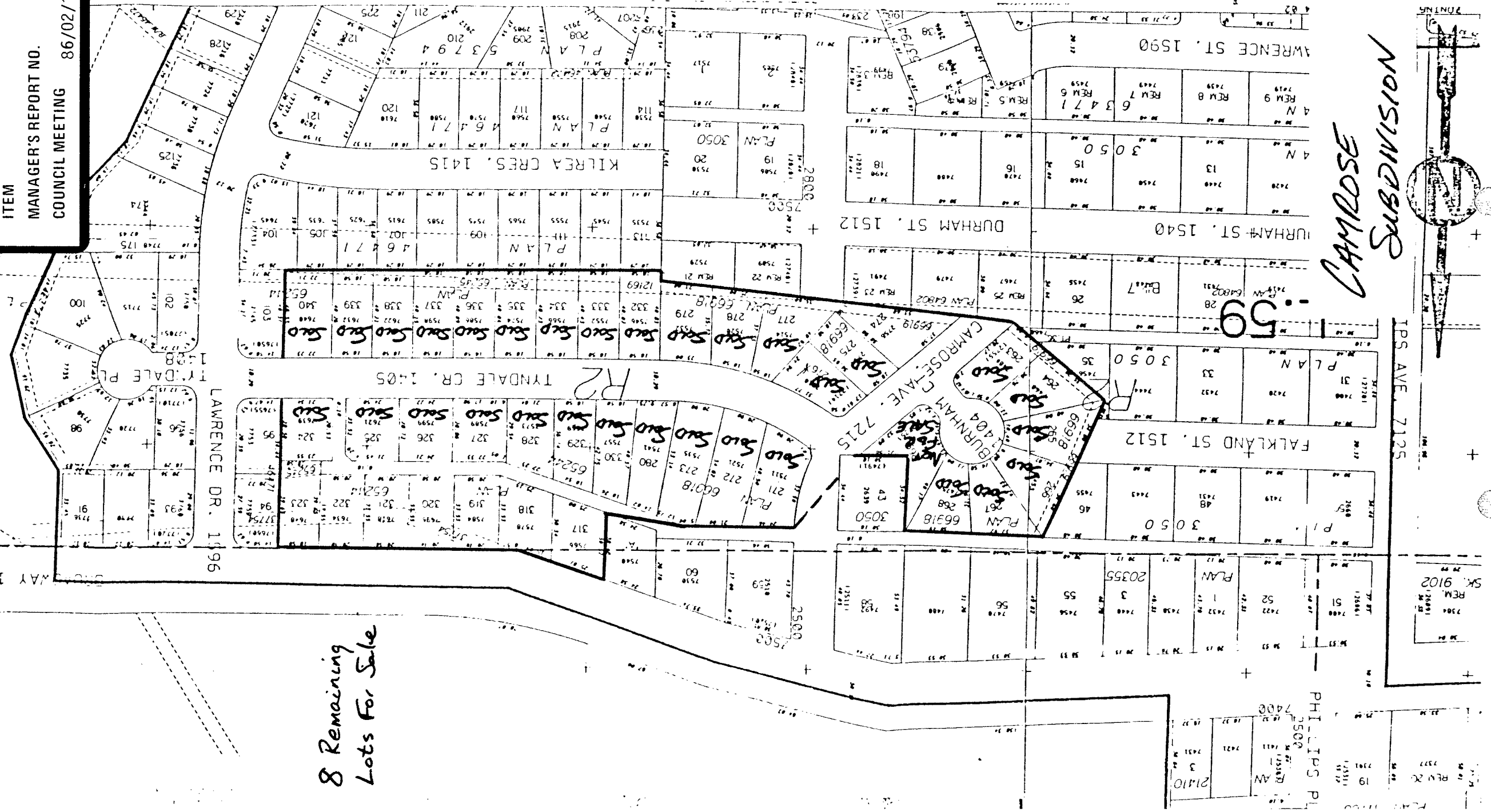
262 Plan

283 R/W Plan 44204

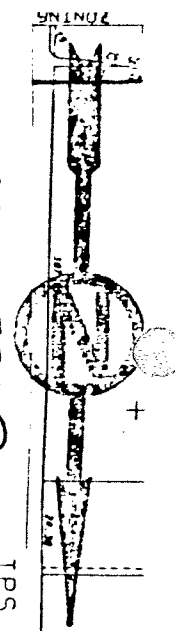
263 44203 114

Highest Bid Received
14 310 - \$87,035

CAMROSE SUBDIVISION



8 Remaining
Lots For Sale



SK. 9102
REM. 2001
7304

REM. 2001
7327
7328
7329
7330
7331
7332
7333
7334
7335
7336
7337
7338
7339
7340
7341
7342
7343
7344
7345
7346
7347
7348
7349
7350
7351
7352
7353
7354
7355
7356
7357
7358
7359
7360
7361
7362
7363
7364
7365
7366
7367
7368
7369
7370
7371
7372
7373
7374
7375
7376
7377
7378
7379
7380
7381
7382
7383
7384
7385
7386
7387
7388
7389
7390
7391
7392
7393
7394
7395
7396
7397
7398
7399
7400