

RE: PETITIONS FROM PROPERTY OWNERS IN THE 3800/3900 BLOCKS OF
HERTFORD STREET WHICH APPEARED ON THE 1986 SEPTEMBER 02 AGENDA
PARKING ON HERTFORD STREET

MUNICIPAL MANAGER'S RECOMMENDATION:

1. THAT the recommendations of the Director Engineering be adopted.

* * * * *

TO: MUNICIPAL MANAGER 1986 09 04

FROM: DIRECTOR ENGINEERING

SUBJECT: 3800 - 3900 BLOCK OF HERTFORD STREET

RECOMMENDATIONS:

1. THAT a "No Parking Anytime" restriction be posted on the north side of Hertford Street from Smith Avenue to the east property line of 3921 Hertford Street;
2. THAT Mr. B. Rose of 3863 Hertford Street, Burnaby, B.C., V5G 2R5, receive a copy of this report.

R E P O R T

Council, at its meeting of 1986 September 02, received two undated submissions from B. Rose, 3863 Hertford Street, Burnaby, B.C., V5G 2R5, requesting that Council consider implementing several parking control measures.

Hertford Street has just undergone a local improvement which has provided an 8.5 metre-wide curbed pavement. A sidewalk was also constructed on the south side while the north side has no sidewalk.

The north side of Hertford Street has been developed with single family residences while the south side has a mixture of rental apartments and single family homes. The rental properties have posted their parking lots for tenant parking only which would indicate that visitors should park on the street. The same thing holds true for the single family homes, where many of the visitors choose to park on the street if parking is available.

The petitioners have suggested a number of solutions that they feel will alleviate some of their concerns.

1. Mark all Driveways so that Minimum Clearances are Met.

The Engineering Department cannot support this suggestion as it would then set a precedent for the Corporation to mark all driveways in the Municipality. The clearances are set down in the Burnaby Street and Traffic Bylaw and are enforceable.

(Cont'd.)

3. Mandatory Visitors Parking Stalls (Minimum 10% of Total Available Stalls) at the Burnaby Townhouse Complex

120

Enforcement can be requested when an infraction is identified.

The Municipality, under its Zoning Bylaw 1965, can only stipulate the total number of parking stalls required for a development, but does not have authority to direct the owner as to the precise manner of designation of such parking.

4. Post "No Parking" signs on One Side of the Street so that Two Lanes would be Kept Clear of Traffic

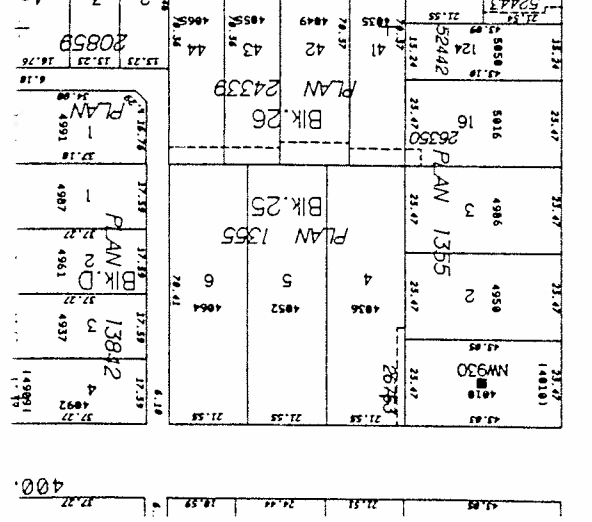
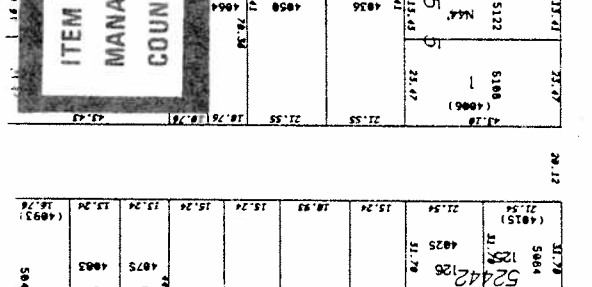
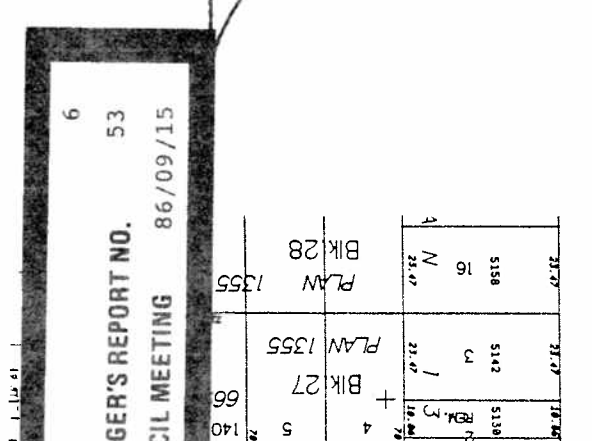
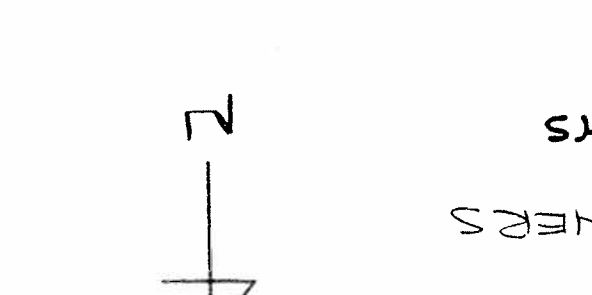
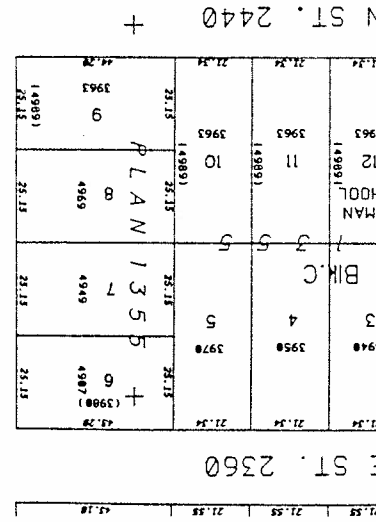
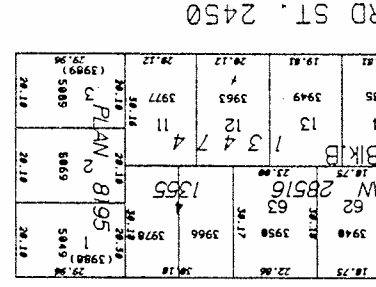
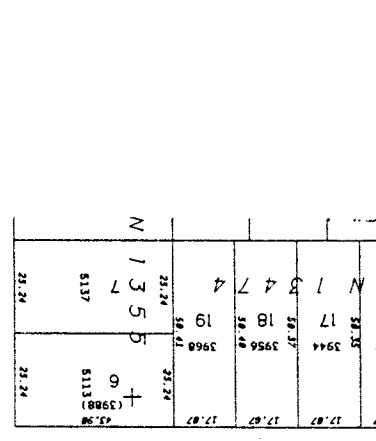
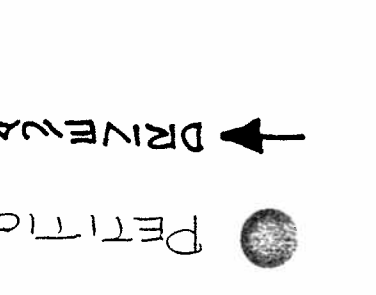
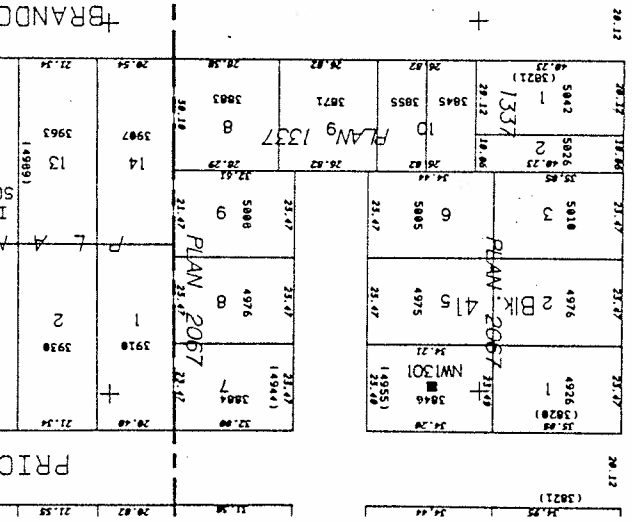
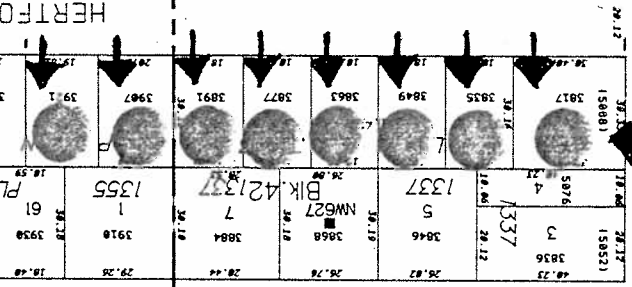
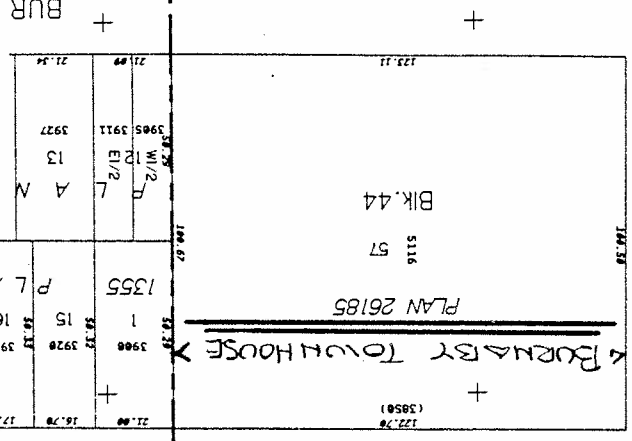
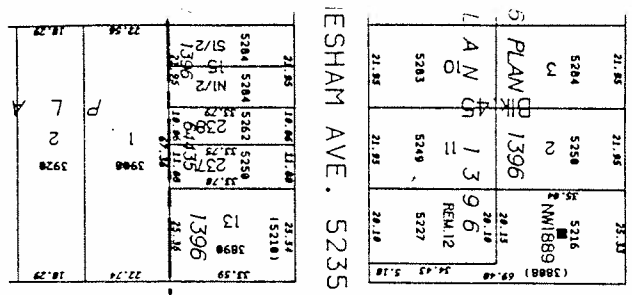
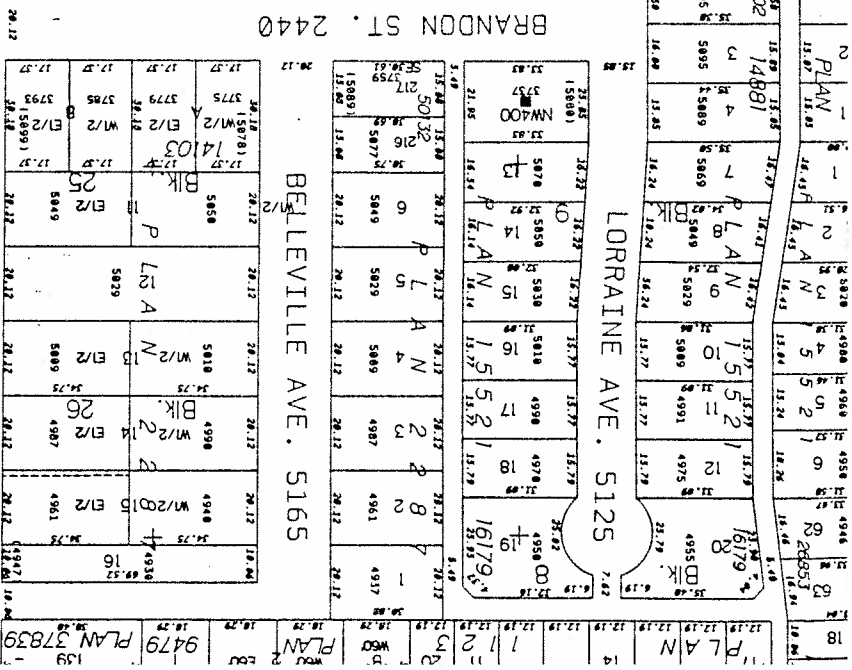
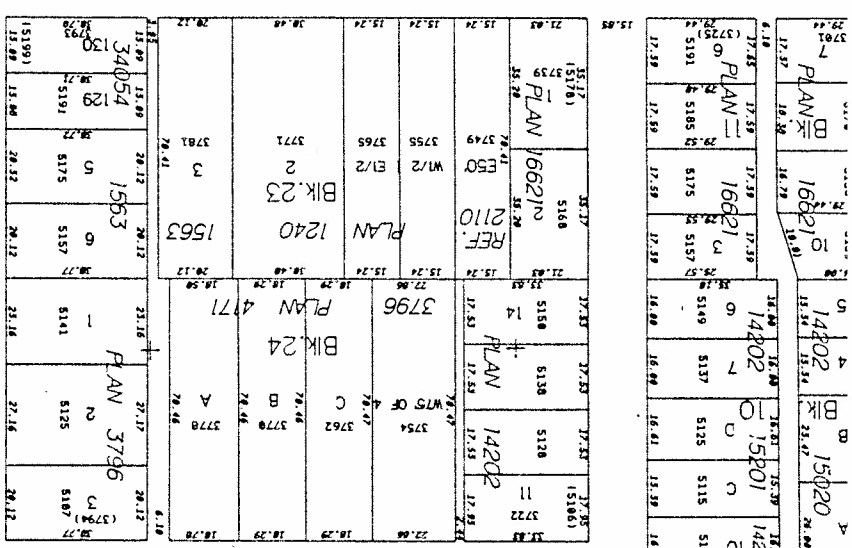
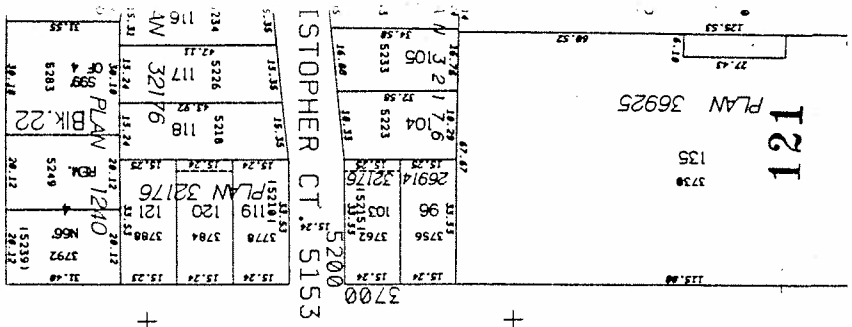
This request has only been signed by eight of thirteen homes on the north side of Hertford Street. The eight petitioners are all from the west end of the block (see attached sketch) and directly across the street from the Burnaby Townhouse development. While it would be possible to prohibit parking in front of the petitioners' properties, there are some negative aspects to be considered:

- a) They would be defeating one of their expressed concerns, i.e., "no available parking on the street during evening hours, weekends and holidays";
- b) The added clear width of roadway could encourage speeding whereas parked vehicles on both sides of an 8.5 metre road normally provides some measure of impediment to speeding.

We were able to personally contact seven of the eight petitioners to discuss their request. They were all made aware that any parking prohibition would also apply to themselves and to their visitors. With this knowledge, they still requested a "No Parking Anytime" restriction be posted adjacent the curb in front of their homes. The Engineering Department has no serious objection to this request because, although it is generally preferable to impose parking restrictions on a whole-block minimum basis, there are no foreseeable problems instituting a partial-block restriction on a local residential street such as Hertford Street.


DIRECTOR ENGINEERING

EEO:cf
cc: () Traffic Supervisor
() Director Planning & Building Inspection
() Officer-in-Charge, Burnaby Detachment, R.C.M.P.



↑ PETITIONERS
 ↓ DRIVERS

ITEM 9
 MANAGER'S REPORT NO. 53
 COUNCIL MEETING 86/09/15

