

ITEM

16

MANAGER'S REPORT NO. 40

COUNCIL MEETING 1981 09 08

RE: LETTER FROM WILLIAM N. VANDER ZALM, MINISTER, MINISTRY OF
MUNICIPAL AFFAIRS, PARLIAMENT BUILDINGS, VICTORIA, V8V 1X4
REGARDING SPECIAL PARKING PRIVILEGES FOR THE PHYSICALLY DISABLED

MUNICIPAL MANAGER'S RECOMMENDATION:

1. THAT the recommendation of the Municipal Engineer be adopted.

* * * * *

TO: MUNICIPAL MANAGER

81 09 03

FROM: MUNICIPAL ENGINEER

SUBJECT: HANDICAPPED PARKING

RECOMMENDATIONS:

1. THAT Burnaby not amend its Streets and Traffic Bylaw to reflect the suggestion by the Honourable Minister of Municipal Affairs.
2. THAT a copy of this report be sent to the Honourable Minister of Municipal Affairs, William N. Vander Zalm, Ministry of Municipal Affairs, Parliament Buildings, Victoria, B.C., V8V 1X4.

REPORT:

Burnaby currently offers a "Parking Exemption Permit", copy attached, available to handicapped persons who own and operate their own vehicles. These permits are intended for on-street time limited parking areas near where the handicapped person works or is required to frequently exceed the posted time limit, such as for medical appointments. They are not restricted to Burnaby residents and only require proof of vehicle ownership and a letter from a doctor verifying the applicant is handicapped, if not obvious. These permits can be obtained either in person or through the mail.

A person having one of these permits is then eligible to park in any available legal on-street parking space otherwise restricted by a time limit. We feel this has certain advantages over the provision of reserved handicapped parking, particularly for those who are employees, in that they have greater flexibility in selecting a parking space closest to their destination.

(cont'd)

The provision of on-street handicapped parking zones could present several problems some of which are:

1. Reserving scarce on-street parking for possible low demand usage.
2. Requirement of continued enforcement to be effective.
3. Possible conflict with other parking/stopping restrictions such as peak hour prohibitions.
4. Fluctuating demand caused by changes in handicapped population distribution and/or environmental alterations such as new construction could make selecting suitable sites difficult.

In view of the flexibility of our current policy and the problems inherent in the provision of special parking zones for on-street parking, we feel that the matter of handicapped parking is best accommodated within a development site and controlled through the Zoning Bylaw.

Another problem which we foresee regarding the provision of handicapped parking, be it either on-street or off-street is "who constitutes a handicapped person?". The S.P.A.R.C. stickers and accepted handicapped parking symbols depict a stylized wheelchair which to some implies that only those persons in wheelchairs are eligible to occupy a handicapped parking stall. What about persons with protheses, pacemakers or respiratory ailments for whom walking any distance is a problem? If any Bylaw, such as the Zoning Bylaw, is to incorporate provisions for handicapped parking then a fairly rigid definition of what constitutes a handicap would be required to ensure that any parking stalls are only utilized by those with the greatest need.

While the above discussion may seem somewhat negative, we are committed to a program that reflects the special needs of the handicapped person. This program includes: in addition to the aforementioned parking permit, the provision of wheelchair ramps in commercial, high density residential, and public institutional areas, during new construction; and the removal of any unnecessary "street hardware" that may present an obstacle to a person in a wheelchair.

To sum up we feel that Burnaby's approach to the subject of handicapped parking is a preferable approach to that suggested by the Honourable Minister of Municipal Affairs.

EEO/DE/ch

Atts.

c.c. () Director of Planning
() Traffic Supervisor


MUNICIPAL ENGINEER

ITEM	16
MANAGER'S REPORT NO.	40
COUNCIL MEETING	1981 09 08

The Corporation of the District of Burnaby No. _____

PARKING EXEMPTION PERMIT

Veh.(Make) _____ Model _____ Year _____ Licence _____

Owner. _____

Address. _____

This Permit is Only Valid for Extended Parking in all
Time Limited Parking Zones.

This Permit is NOT VALID in any Prohibited Parking Zone
such as No Parking, No Stopping, Fire Zones, Corner
Clearances, etc.

NOTE: Permit Must be Clearly Displayed Atop of Dashboard
or on Lowered Sunvisor when Vehicle is Parked.

Municipal Engineer. _____
E.E. Olson.

1979 ENUMERATION OF ELECTORS

The District of Burnaby will commence an Enumeration of Electors for inclusion in the 1979 Municipal List of Electors on Monday, 1979 April 02.

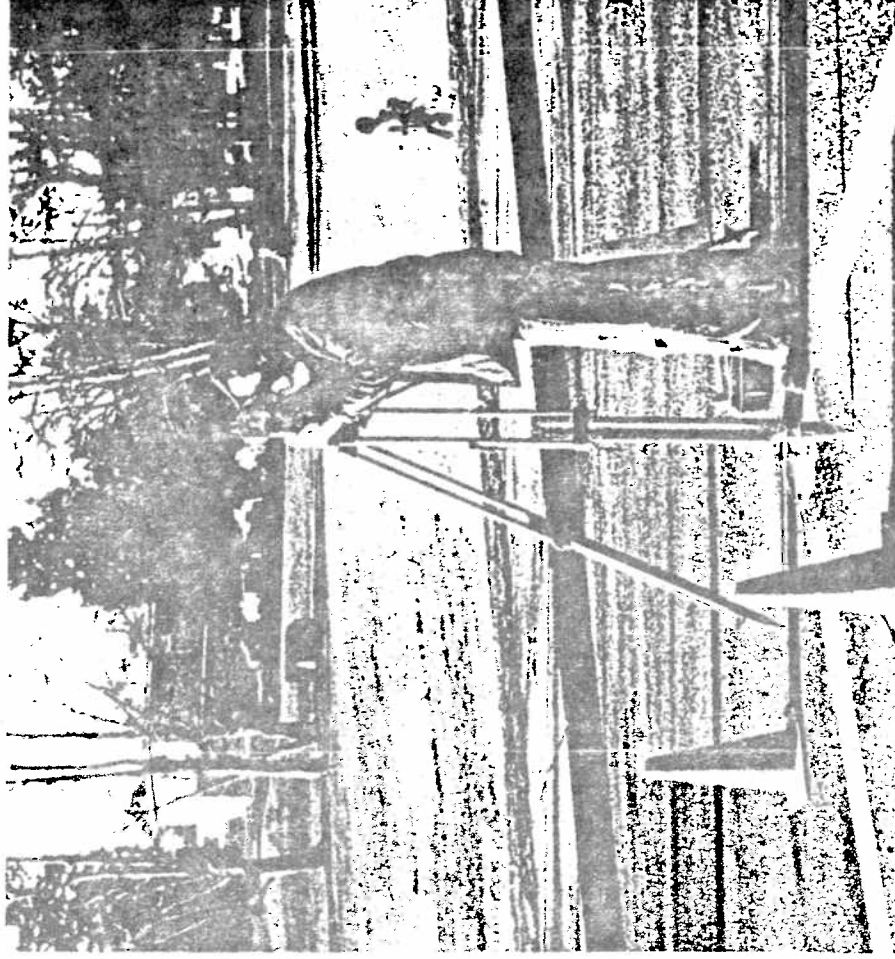
Who is eligible to be enumerated?

All persons 19 years of age or older — including those who will be 19 by Election Day (Saturday, 1979 November 17); who are Canadian Citizens or British subjects; who have resided in Canada for 12 months, in British Columbia for 6 months, and in Burnaby for the past 3 months.

Note: Ownership of property no longer automatically places your name on the List of Electors — you must be enumerated.

For further information on the subject of this Enumeration and the preparation of the District of Burnaby 1979 Municipal List of Electors call 294-7294 or 294-7295.

METRIC MAPPING PROJECT CONTINUES ON SCHEDULE



Easily Spotted Target

Burnaby's remapping project to convert its strip maps from the Imperial to the Metric system, is now at the half way point. The area between Moscrop and Gilpin Streets and the Fraser River has been remapped with completion of the northern part of the Municipality scheduled for 1979 December 31.

The large painted symbols at certain street intersections are a vital part of the programme. When the Mapping Technicians view the aerial photographs, they can identify these targets and for any point in the Municipality can determine a value relating to exact world positions. This knowledge will assist Municipal

employees to maintain more accurate records of the network of services provided to Burnaby's 40,000 or more properties. For more information call 294-7160.

BICYCLE AND DOG LICENCES

The Licence Department once again wishes to remind Burnaby residents that bicycle and dog licences were due on 1979 January 02. Licence fees for 1979 are:

Male or Female Dogs	\$21.00 each
Spayed Female or Neutered Male (proof of sterilization required)	6.00 each
Bicycles	2.00 each

Also if your bicycle has been lost or stolen, you may find it at the Municipal Hall bicycle compound. For further information, contact the Licence Department, Municipal Hall, 294-7320 where you may also purchase your dog and bicycle licences. Dog licences may also be purchased at the Animal Shelter located at 3202 Norland Avenue, Burnaby.

POLLUTION PROBLEMS?

Are you concerned with air, land, water or noise pollution?

At present the Burnaby Health Department is reviewing the "Noise or Sound Abatement By-Law" for our Municipality. The Pollution Committee of the Municipal Council will be reviewing this by-law and other environmental matters.

If you have concerns about this or any other type of pollution of our environment, or if you would like to make a presentation to the Pollution Committee, please contact the Committee Secretary at 294-7286.

PARKING FOR HANDICAPPED PERSONS

The Municipality of Burnaby has for some years now issued parking exemption permits for vehicles owned and operated by handicapped persons. These permits will permit such vehicles to be parked beyond the time limit set in posted zones. It should be noted however, that these

permits do not allow such vehicles to ignore prohibited parking zones i.e. 'No Parking Anytime', No Stopping Anytime', Front of Fire Hydrants, etc.

These permits may be obtained free of charge by application to the Municipal Engineer's Office, Traffic Division, telephone 294-7440.