

ITEM	7
MANAGER'S REPORT NO.	83
COUNCIL MEETING	1979 12 10

RE: ENGINEERING SERVICES FOR THE DESIGN OF A SANITARY SEWER SYSTEM IN THE AREA BOUNDED BY BOUNDARY ROAD, MARINE WAY, GREENALL AVENUE AND MARINE DRIVE

Following is a report from the Municipal Engineer regarding proposals that have been received in response to an invitation for engineering services.

RECOMMENDATION:

1. THAT the recommendation of the Municipal Engineer be adopted.

\* \* \* \* \*

TO: MUNICIPAL MANAGER 79 11 28  
 FROM: MUNICIPAL ENGINEER  
 SUBJECT: ENGINEERING SERVICES FOR THE DESIGN OF A SANITARY SEWER SYSTEM IN THE AREA BOUNDED BY BOUNDARY ROAD, MARINE WAY, GREENALL AVENUE AND MARINE DRIVE

RECOMMENDATION:

1. THAT The Corporation of Burnaby enter into an Engineering Agreement with Robert F. Binnie Ltd. to provide the engineering services as outlined in the Municipal Engineer's Terms of Reference dated 79 11 13 and in accordance with the Consultant's proposal dated 79 11 23 for an upset fee of \$1,290.00, excluding disbursements.

REPORT

As part of the growing interest by the public sector to develop in the Big Bend area, your Municipal Engineer has sent the attached Terms of Reference to three reputable engineering consultants, inviting them to submit proposals for their engineering services to complete the design of the sanitary sewer system in the area bounded by Boundary Road, Marine Way, Greenall Avenue and Marine Drive. Proposals have now been received from each of the consultants and a brief summary of each of their proposals and fee structures is as follows:

1. Kerr Wood Leidal Associates Ltd. - This proposal outlines, in detail, their understanding of the Terms of Reference and their recognition of the urgency of completing this project as soon as possible. It also outlines their project

(CONT'D)

ITEM	7
MANAGER'S REPORT NO.	83
COUNCIL MEETING	1979 12 10

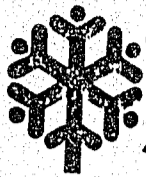
team, including their choice of a geotechnical sub-consultant, and outlines in considerable detail their proposed methodology with respect to completing this assignment in as little time as possible. The proposal estimates their engineering fees to range between \$3,700.00 and \$4,900.00 excluding disbursements.

2. Vector Engineering Services Ltd. - This proposal outlines the various facets of this project including the calling of quotations for a sanitary sewer pump station, the feasibility investigation of ensuring that the entire area will be serviced and the provision of the necessary construction drawings. This proposal also includes their choice of geotechnical sub-consultants and estimates their engineering fees to be \$6,500.00 excluding disbursements.
3. Robert F. Binnie Ltd. - This proposal indicates that they are prepared to undertake this assignment on the basis of the Municipal Engineer's Terms of Reference and that the assignment could be completed within one month. It also indicates that the engineering fees for this project would not exceed \$1,290.00 exclusive of disbursements.

Having carefully reviewed each of these proposals, it is my conclusion that the proposal submitted by Robert F. Binnie Ltd. is complete in its understanding of the Terms of Reference and has a very favorable fee structure and, therefore, it is my recommendation that the Corporation of Burnaby enter into an Engineering Agreement with Robert F. Binnie Ltd. to provide the necessary services as outlined in the Municipal Engineer's Terms of Reference dated 79 11 13 and in accordance with the consultant's proposal dated 79 11 23 for an upset fee of \$1,290.00, excluding disbursements.

  
MUNICIPAL ENGINEER

VNW:sp  
Attach.



THE CORPORATION  
OF THE DISTRICT OF  
**BURNABY**

4949 Canada Way, Burnaby, B.C. V5G 1M2  
Engineering Department

ITEM	7
MANAGER'S REPORT NO.	83
COUNCIL MEETING	1979 12 10

Telephone (604) 294-7460

79 11 13

Robert F. Binnie Ltd.  
650 Clyde Avenue  
West Vancouver, B. C.  
V7T 1E2

Attention: Mr. R. F. Binnie, P. Eng.

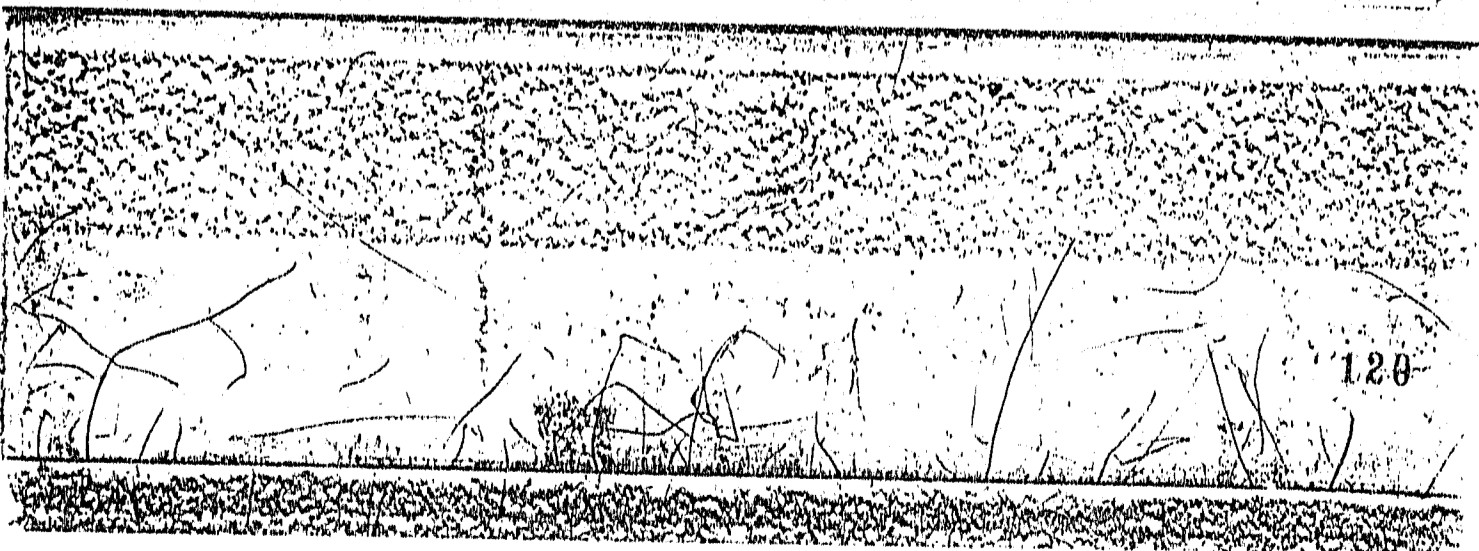
Dear Sir:

RE: ENGINEERING SERVICES FOR THE DESIGN OF A SANITARY  
SEWER SYSTEM IN THE AREA BOUNDED BY BOUNDARY ROAD,  
MARINE WAY, GREENALL AVENUE AND MARINE DRIVE

As part of the Corporation's policy to encourage industrial development in the Big Bend area, we are proposing to construct the first phase of a sanitary sewer facility in the area bounded by Boundary Road, Marine Way, Greenall Avenue and Marine Drive (see enclosed sketch for precise boundaries). This first phase will more specifically consist of a pumping station and a gravity collection system of which only the pumping station and a small portion of the collection system will be constructed at this time.

I would therefore request your proposal to provide all necessary engineering services to design a complete sanitary sewage collection system for the area outlined on the enclosed sketch. This work shall be performed in accordance with the Corporation's current standards and specifications and shall be done in metric format. Information regarding existing facilities within and adjacent this area will be made available by the Corporation's Design Division based on their present records. It will be the design consultant's responsibility to prove out any existing facilities which may be in doubt. In this regard the Corporation will arrange for the necessary dig outs.

... 2



ITEM	7
MANAGER'S REPORT NO.	83
COUNCIL MEETING	1979 12 10


Please note that the Corporation of Burnaby will not provide horizontal and vertical control as has been done in the past. However, we will continue to provide bench mark information.

As time is of the essence, I would appreciate receiving your proposal not later than 1979 November 23.

Yours truly,

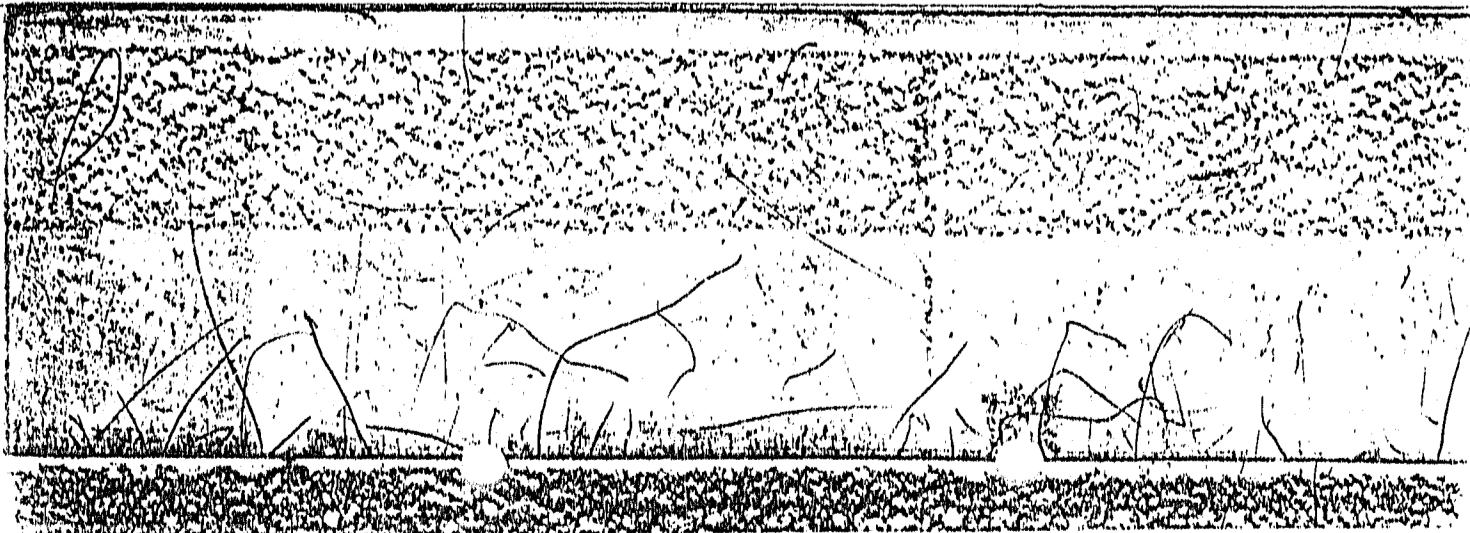
121

E. E. Olson, P. Eng.,  
MUNICIPAL ENGINEER

  
by: V. N. Wiebe, P. Eng.,  
DESIGN ENGINEER

VNW:sp  
Attach.

cc: ( ) Design Engineer



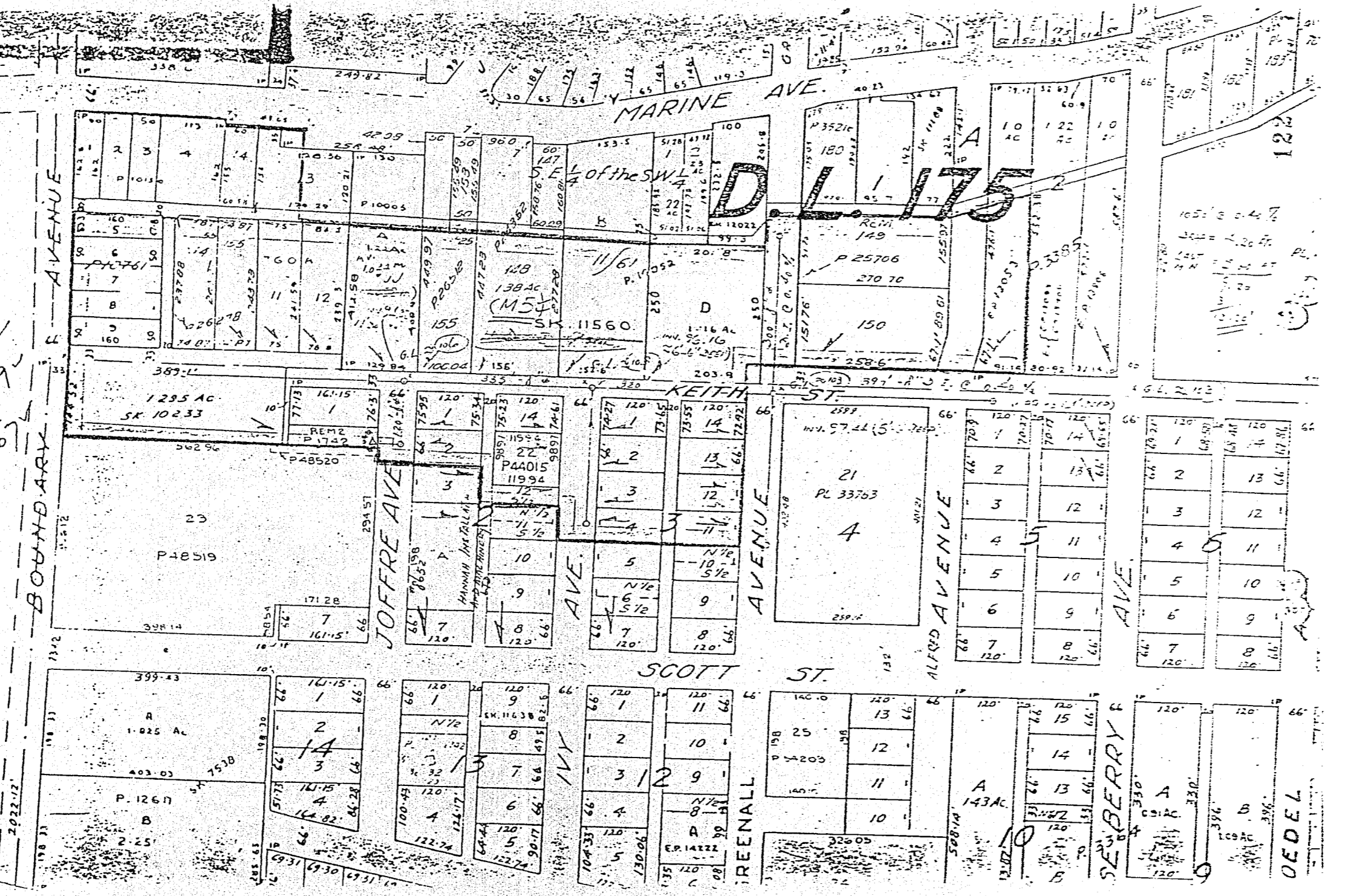
ITEM 7  
 MANAGER'S REPORT NO. 83  
 COUNCIL MEETING 1979 12 10

10.8 = 4.075  
 15.8 = 4.28  
 20 = 4.07

790004

REFERENCE PLANS:-

750 519  
 750 523



OEDEL