

ITEM	11
MANAGER'S REPORT NO.	33
COUNCIL MEETING	May 2/77

Re: NEIGHBOURHOOD IMPROVEMENT PROGRAM
PROPOSED BALL-HOCKEY AREA PROJECT ON CLOSED PORTION
OF 18TH STREET EAST OF STRIDE SCHOOL

Following is a report from the Director of Planning regarding the proposed construction of a Neighbourhood Improvement Program Project.

RECOMMENDATION:

1. THAT Council approve the expenditure of up to \$11,000 for the construction of a ball-hockey play area as outlined in the Director of Planning's report.

* * * * *

Planning Department
April 26, 1977

TO: MUNICIPAL MANAGER File #12.129(a)
FROM: DIRECTOR OF PLANNING
RE: NEIGHBOURHOOD IMPROVEMENT PROGRAM
PROPOSED BALL-HOCKEY AREA PROJECT ON CLOSED PORTION
OF 18TH STREET EAST OF STRIDE SCHOOL

INTRODUCTION

On November 29, 1976 Council approved in principle a listing of Eastburn N.I.P. project proposals and levels of expenditure of funds for each.

This N.I.P. project has been in the design stage for three months with plans having been prepared by Parks and Recreation Department staff.

The purpose of this report is to request on behalf of the Eastburn Neighbourhood Improvement Program Resident Planning Committee that Council approve the expenditure of funds to construct the project.

BACKGROUND

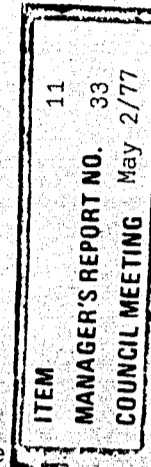
The need for a play area on the closed portion of 18th Street just below Stride Avenue was first raised in the community in 1973. Steps were taken to legally close the road at that time. When the N.I.P. program was started the request for construction of a suitable play area was again repeated by the residents.

The proposal has been discussed by Parks and Recreation, Engineering and Planning Department staff, and the design process has involved the Neighbourhood Improvement Programme Resident Planning Committee, the Stride School principal, B.C. Housing Management Commission (who own an adjacent housing development) and the Cedar Place Tenants Association. In addition a public meeting was held by the N.I.P. Committee at Stride School on March 3, 1977. This meeting resulted in some small changes to the design and a strong endorsement from the local residents.

The Parks and Recreation Commission, at its meeting of April 20, 1977, approved the recommendation THAT:

"...a ball-hockey play area be constructed on the closed portion of 18th Street, east of Stride School, at an estimated cost of \$11,000."

At present, the Burnaby School Board has been given a copy of the final design for their comments.



THE PROPOSAL

The project will include a blacktopped play area 60 by 110 feet in size surrounded by a four foot plywood fence. One end will have a block rebound wall ten feet tall and one side will have a chain-link screen to confine balls within the area and protect adjacent properties.

The play area will be situated partially on the adjacent park with an orientation parallel to 18th Street. A low berm will separate the play area from the private property on the east side of 18th Street. A legal site plan is attached.

The functions suggested by residents for this facility include street ball hockey, basketball, scrub tennis, rebound wall games, volleyball, badminton, possible ice-skating in winter, water sprinkler in summer and other activities.

IMPACTS

The impacts of this project have been discussed at length in the community and have been incorporated in the design. The first was the impact on the nearby housing which has been minimized by locating the project forty feet away from the property lines and including a ten foot screen on the side nearest the housing as well as a low berm in the area between the housing and the play area. A second concern was the school playground which holds a major soccer field. The principal and staff were concerned that the project should not interfere with the use of the field. This has been incorporated in the design. The relocation of one baseball backstop will be necessary and was agreed to by the school staff.

ITEM	11
MANAGER'S REPORT NO.	33
COUNCIL MEETING	May 2/77

FUNDING

The total cost estimated by Parks staff for this project is \$11,000. This would include drainage, site preparation, berm construction, paving, fencing, landscaping and two basketball standards. Capital funds are available in the Neighbourhood Improvement Programme budget for this project. Under the terms of the N.I.P. agreement the costs will be shared:

Federal Government	50%	\$ 5,500
Provincial Government	25%	2,750
Municipality of Burnaby share	25%	<u>2,750</u>
		<u>\$ 11,000</u>

The play area would become the property of and be maintained by the Municipality.

CONSTRUCTION

It is anticipated that construction would begin as soon as possible, under the supervision of the Burnaby Parks and Recreation Department.

SUMMARY

A design for a fenced ball-hockey play area at the eastern edge of Stride School Park has been prepared through discussion with Municipal staff, school staff, residents and the Eastburn Neighbourhood Improvement Programme Resident Planning Committee.

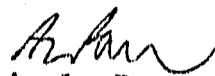
The purpose of this project is to provide a play area suitable for a large number of activities in an area with a large population of children.

The cost of the project has been estimated at \$11,000 of which the Municipal share would be \$2,750 under the terms of the Eastburn Federal-Provincial-Municipal Neighbourhood Improvement Programme.

RECOMMENDATION

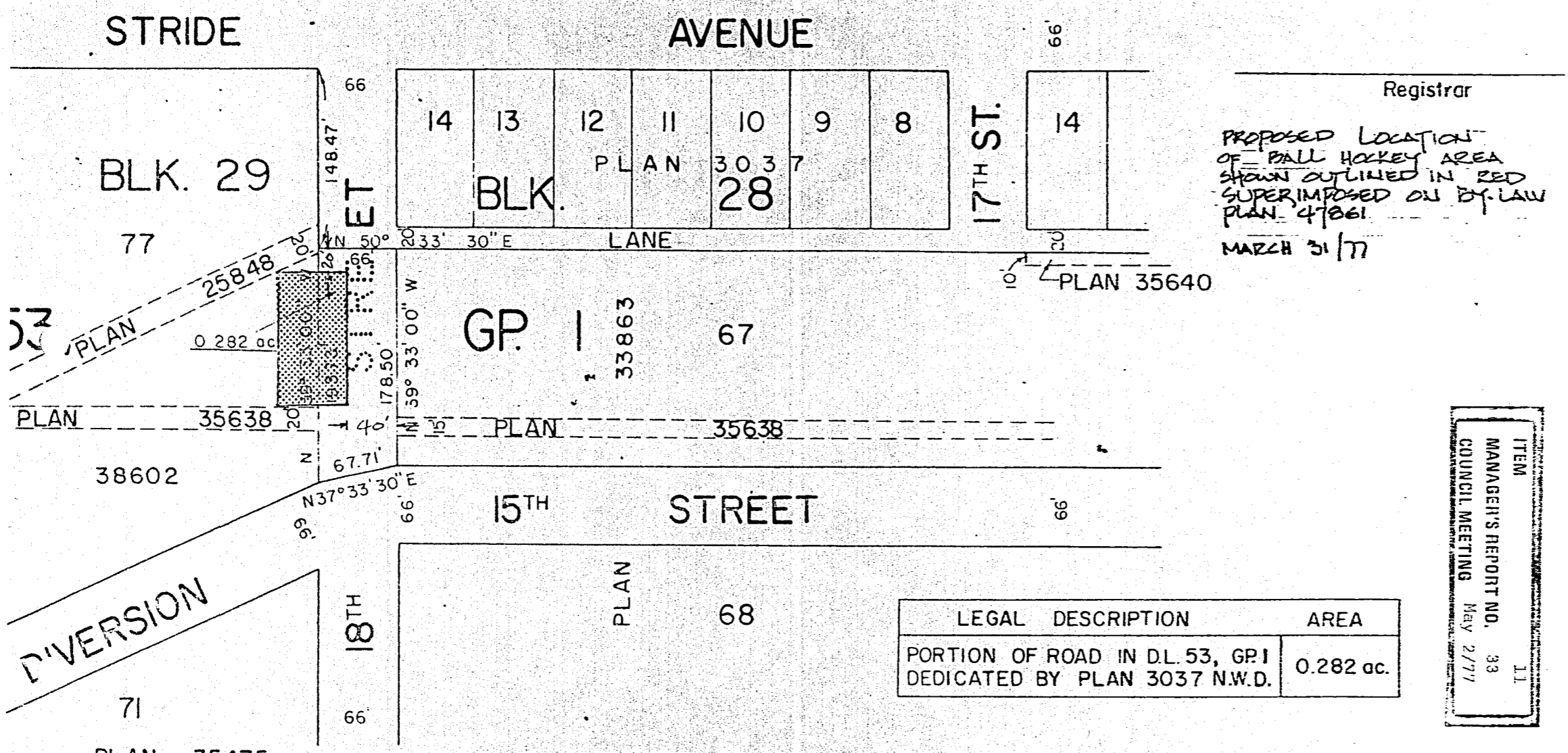
It is therefore recommended:

THAT Council approve the expenditure of up to \$11,000 for the construction of a ball-hockey play area as outlined in this report.


A. L. Parr
DIRECTOR OF PLANNING

149

RE/dm
attachment
cc C.I.P. Committee, Parks and Recreation Commission, Burnaby Board
of School Trustees, Eastburn N.I.P. Resident Planning Committee



Registrar
 PROPOSED LOCATION OF BALL HOCKEY AREA SHOWN OUTLINED IN RED SUPERIMPOSED ON BY-LAW PLAN 47861
 MARCH 31/77

ITEM	11
MANAGER'S REPORT NO.	33
COUNCIL MEETING	May 2/77

LEGAL DESCRIPTION	AREA
PORTION OF ROAD IN DL. 53, GP. 1 DEDICATED BY PLAN 3037 N.W.D.	0.282 ac.

Burnaby,
 ment,
 i.C.

"This plan lies within the Greater Vancouver Regional District."

The Corporation of the Municipality
 of Burnaby

Mayor: _____

Municipal Clerk: _____

Certified correct according to
 Land Registry Office records.
 Dated this 4th day of February
 1975.

150