

Re: ENGINEERING SERVICES FOR THE DESIGN AND SUPERVISION
OF SANITARY SEWER INSTALLATION IN THE CENTRAL VALLEY

Following is a report from the Municipal Engineer on proposals for engineering services that are required for the design and installation of sanitary sewers in the Central Valley.

RECOMMENDATION:

1. THAT the services of Web Engineering Ltd. be retained for the design, contract preparation, construction layout, and residential supervision of sanitary sewer installation in the Central Valley, Area No. 6, Phase 3, as outlined in the Municipal Engineer's letter dated March 21, 1977, and Web Engineering Ltd. 's letter to the Municipal Engineer dated March 29, 1977.

* * * * *

TO: MUNICIPAL MANAGER 13 April, 1977

FROM: MUNICIPAL ENGINEER

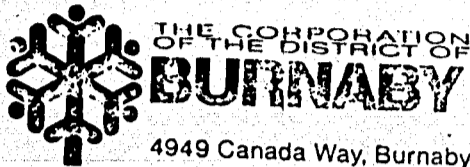
SUBJECT: ENGINEERING SERVICES FOR THE DESIGN AND SUPERVISION
OF SANITARY SEWER INSTALLATION IN THE CENTRAL VALLEY
AREA NO. 6, PHASE 3.

Proposals were invited by letter 21 March, 1977 (see Attachment "A") from Web Engineering Ltd., Kerr, Wood, Leidal Associates Ltd., McElhanney Surveying and Engineering Ltd., and Ker, Priestman & Associates Ltd. to provide engineering services related to the design and installation of sanitary sewers in Area #6, Phase 3 of the Central Valley. All of these firms are considered qualified to perform this service.

The proposal of 21 March, 1977, requires the consultant to provide services of design, contract preparation, construction layout and resident supervision. All four firms responded to the invitation favourably, and indicated that they would be prepared to undertake the work. The proposals of all four firms are similar in content and are not included as part of this report, but are available for your inspection, and also to members of Council.

As noted in previous reports of this nature, the question of consultant selection is a difficult one, especially when the proposals come in a variety of formats; some including upset fees for, and others only referring to, the applicable scale within the outline of services and scale of minimum fees booklet recommended by the Association of Professional Engineers. It is for these reasons that the entire matter of the retention of professional engineering services will be the subject of a later report. Pending the completion of this report, we are currently favouring submissions which include an estimate of fees for the various segments of work. In addition, we also rely heavily on past performance for similar type of work. In

| | |
|----------------------|------------|
| ITEM | 7 |
| MANAGER'S REPORT NO. | 29 |
| COUNCIL MEETING | Apr. 18/77 |



4949 Canada Way, Burnaby, B.C. V5G 1M2

ATTACHMENT "A"

Department of the Engineer

Telephone (604) 294-7460

Web Engineering
101 - 1861 Welch Street
North Vancouver, B.C.
V7P 1B7

21 March, 1977

Dear Sirs:

Re: Engineering Services for the Design and Supervision of Sanitary Sewer Installation in the Central Valley Area #6, Phase 3

The above captioned area is the last unsewered area remaining in the Central Valley of Burnaby and has been programmed for construction in the latter part of 1977. In order to meet our objectives, I hereby invite you to submit a proposal to provide the requisite engineering services for the design; contract preparation; construction layout and resident supervision of sanitary sewer installation in the Central Valley, Area #6, Phase 3, as outlined on the attached sketch. The design shall be done to the current Corporation of Burnaby specifications and shall include an extensive soils report for all areas where poor soil conditions exist. This latter aspect cannot be over-emphasized because of our experience with sewer construction in similar areas in the Central Valley. The Consultant will be responsible for programming his work load such that construction tendering could commence as early as 1 July, 1977.

Information regarding existing 'as built's', bench marks and survey control plans will be made available by contacting the Design Engineer. I also advise that this work will be done under an Engineering Agreement, as per sample agreement attached.

We would appreciate receiving your proposal on or before 30 March, 1977. Your proposal should indicate manner of payment for the various facets of the work and include a resume of the key personnel you intend using for the layout and supervision portion of the project.

Yours truly,

E. E. Olson, P. Eng.
MUNICIPAL ENGINEER

By: V. N. Wiebe, P. Eng.
DESIGN ENGINEER

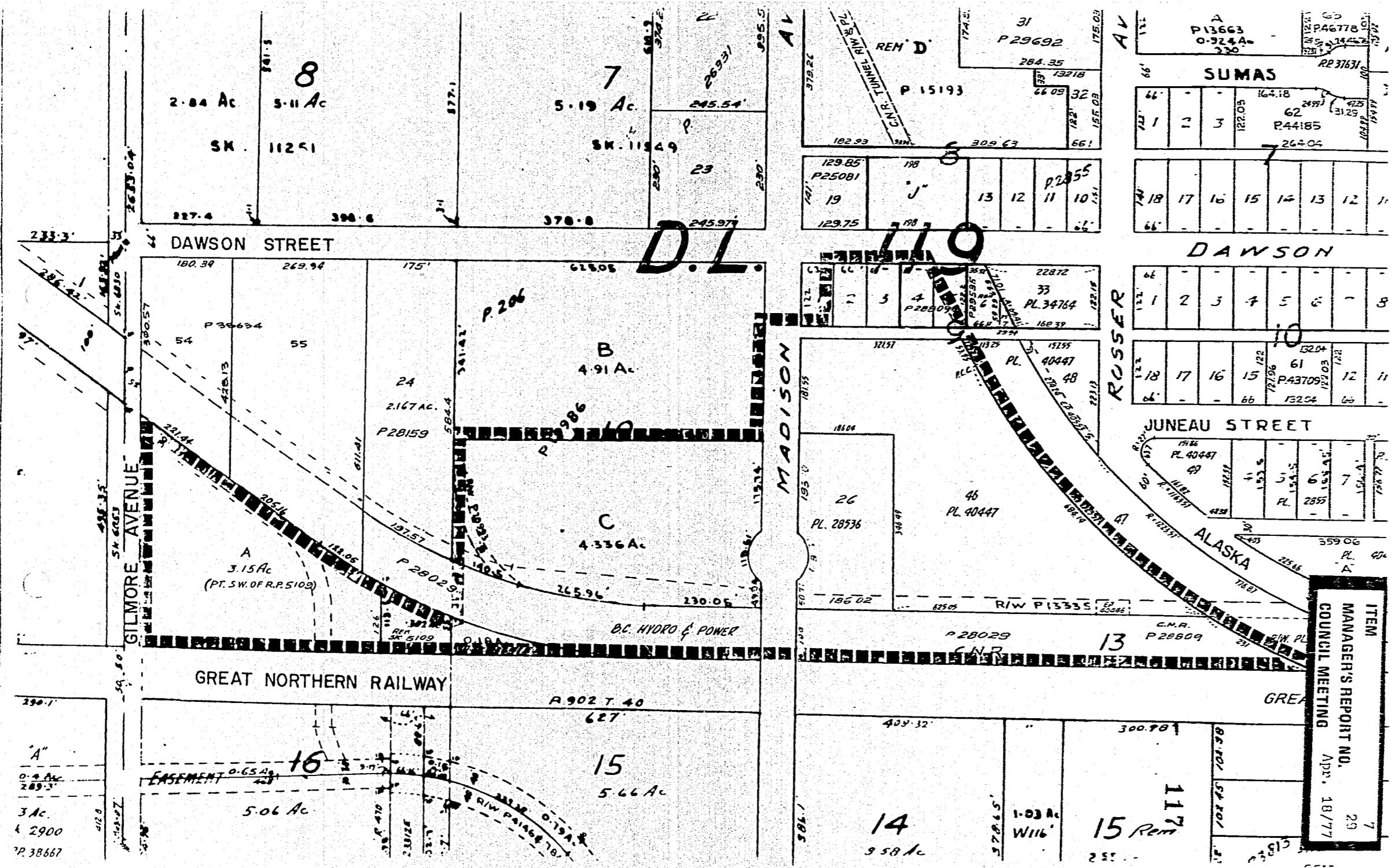
VNW:cmg

Attch.

c.c. () Design Engineer

() Operations & Const. Engineer

116



SUMAS

| | | | | | |
|--------|---|---|--------|-------|------|
| 66 | - | - | 164.18 | 249.7 | 425 |
| 71 | 2 | 3 | 122.08 | 62 | 3129 |
| P24485 | | | | | |
| 264.04 | | | | | |

DAWSON

| | | | | | |
|----|---|---|---|---|----|
| 66 | - | - | - | - | - |
| 71 | 1 | 2 | 3 | 4 | 5 |
| 72 | 6 | 7 | 8 | 9 | 10 |

JUNEAU STREET

| | | | | | |
|----|----|----|----|----|----|
| 66 | - | - | - | - | - |
| 71 | 1 | 2 | 3 | 4 | 5 |
| 72 | 6 | 7 | 8 | 9 | 10 |
| 73 | 11 | 12 | 13 | 14 | 15 |
| 74 | 16 | 17 | 18 | 19 | 20 |

ALASKA

| | | | | | |
|----|----|----|----|----|----|
| 66 | - | - | - | - | - |
| 71 | 1 | 2 | 3 | 4 | 5 |
| 72 | 6 | 7 | 8 | 9 | 10 |
| 73 | 11 | 12 | 13 | 14 | 15 |
| 74 | 16 | 17 | 18 | 19 | 20 |

ITEM
MANAGER'S REPORT NO. 29
COUNCIL MEETING Apr. 18/77

D.L.

MADISON

ROSSER

GREAT NORTHERN RAILWAY

BC HYDRO & POWER

3 Ac.
k 2900
P 38667

5.06 Ac

5.66 Ac

9.58 Ac

15 Rem

117