

ITEM 4
MANAGER'S REPORT NO. 58
COUNCIL MEETING Sept. 15/75

Re: COST SHARING IN D.L. 74
SUBDIVISION REFERENCE #32/74
PEROSA REALTY

Following is a report from the Director of Planning regarding a cost sharing proposal for servicing that involves Municipal and private properties on Scholl Street.

The Land Agent advises that the Municipal lots would be readily saleable upon installation of the necessary services, and for this reason, recommends that the Municipality enter into a cost sharing arrangement with the developer of Subdivision Reference #32/74.

RECOMMENDATION:

1. THAT the Municipality share in the cost of providing utilities for Subdivision Reference #32/74, with the amount not to exceed \$12,560.

* * * * *

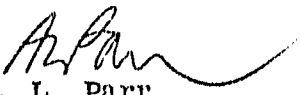
PLANNING DEPARTMENT
SEPTEMBER 11, 1975

TO: MUNICIPAL MANAGER
FROM: DIRECTOR OF PLANNING
RE: COST SHARING IN D.L. 74 - SUBDIVISION REFERENCE #32/74
PEROSA REALTY

The Planning Department is in receipt of a subdivision application for property on the north side of Schou Street, as shown on the attached sketch. The Corporation owns three lots directly opposite on the south side of Schou Street. The developer of the Norfolk-Schou property has arranged for the design of all utilities which are required for the municipal lots in conjunction with his development. Based on the contract the developer has obtained for the installation of these utilities, the Municipal Engineer has recommended that the Corporation contribute the sum of \$12,560 for construction of those facilities which are of direct benefit to the Corporation lots.

In view of the sale potential which results from the construction of services for the private lots on the north side of Schou Street, it is recommended:

THAT Council authorize cost sharing in the amount of \$12,560 for Subdivision Reference #32/74.


A. L. Parr
DIRECTOR OF PLANNING

HR:cw
Att.

ITEM 4
MANAGER'S REPORT NO. 58
COUNCIL MEETING Sept. 15/75

D.L. 745'12

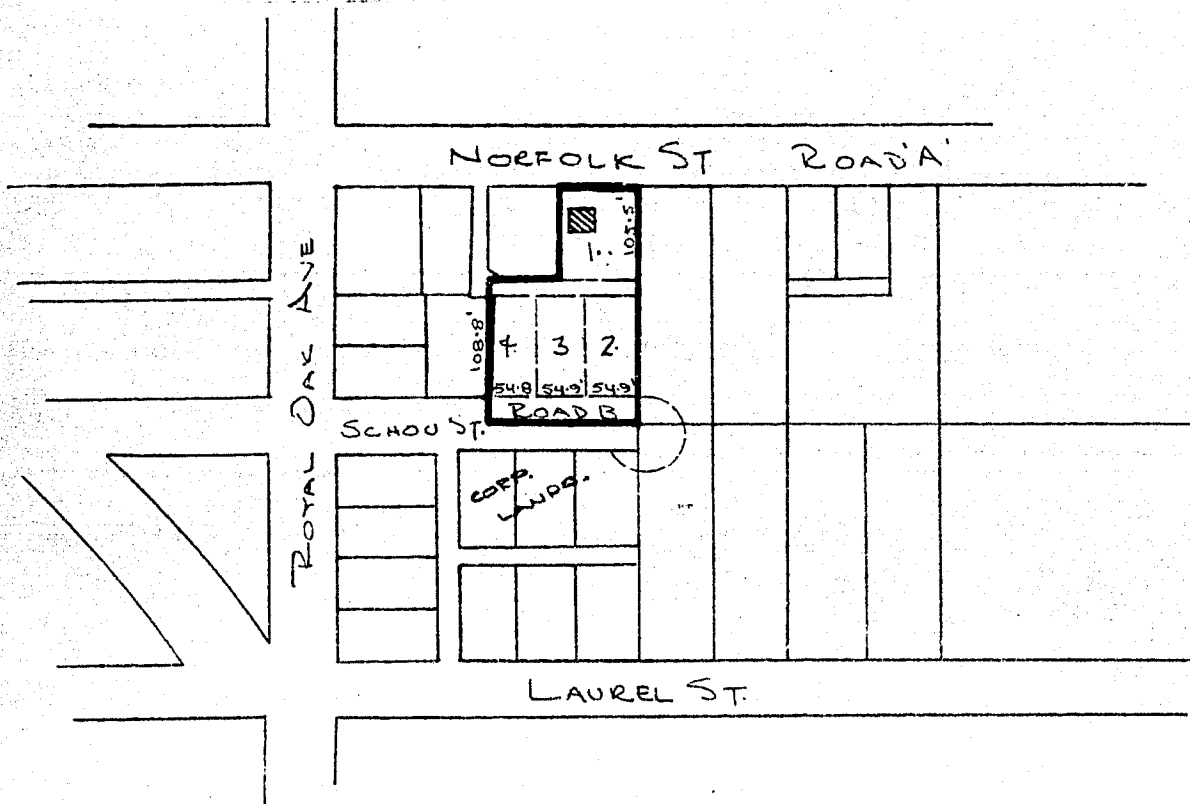
S.D. 32/74

BLOCK 2

ZONING R5

Rem LOT 2

PLAN 1380



SCALE 1" = 200'