

ITEM 3

MANAGER'S REPORT NO. 37

COUNCIL MEETING May 13/74

Re: Request for Cancellation of a Redundant Sewer Easement
Lot 53, Expl. Pl. #15045, Blk. 111, D.L. 122, 123 and 124
Grp. 1 N.W.D. Plan 16792 - 4533 Charles Street

The subject easement (see attached sketch) was obtained for sanitary sewer purposes on September 27, 1956. It became redundant when the sewer was subsequently installed in an alternate location. The owner of the subject property now wishes to construct a garage and has, therefore, requested that the easement be cancelled. This request meets with the approval of the Municipal Engineer.

RECOMMENDATION:

THAT authorization be given to cancel the subject easement.

| | | | | |
|-----|-----|----|----|------|
| 62 | 70 | 78 | 86 | 4494 |
| 9 | 10 | 11 | 12 | 578 |
| 495 | 519 | | | |

| | | | | |
|-----|----|----|-----|------|
| 17 | 16 | 15 | 14 | 13 |
| 338 | | | 495 | 578 |
| 63 | 71 | 79 | 87 | 4495 |

| | | | | | | |
|------|----|----|----|------|---|------|
| 4462 | 70 | 78 | 86 | 4494 | | |
| 53.6 | " | " | " | 53.6 | | |
| 122 | 1 | 2 | 3 | 4 | 5 | 122 |
| 53.6 | " | " | " | " | " | 53.6 |

| | | | |
|-----|--------|--------|----|
| 50 | 124 | 123.77 | 50 |
| 23 | 6 | | |
| 22 | 7 | | |
| 21 | 8 | | |
| 20 | 9 | | |
| 19 | 10 | | |
| 18 | 11 | | |
| 17 | 12 | | |
| 16 | 13 | | |
| 15 | 14 | | |
| 124 | 122.91 | | |

| | | |
|-----|--------|------|
| 124 | 122.79 | 1405 |
| 24 | 1 | 49.5 |
| 23 | 2 | |
| 22 | 3 | |
| 21 | 4 | |
| | 5 | |
| | 6 | |

4505 19 29 35 45 51 57 63
 NAPIER ST.

| | | | | | | | | | |
|---|---|---|---|---|---|---|-----|----|---|
| 1 | 2 | 3 | 4 | A | B | C | D | E | F |
| | | | | | | | 132 | 83 | |

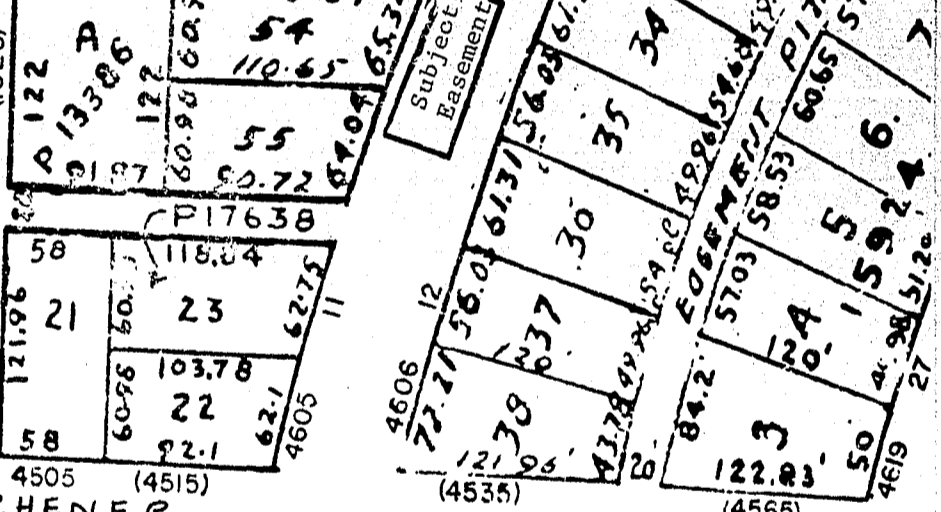
ITEM 3
 MANAGER'S REPORT NO. 37
 COUNCIL MEETING May 13/74

| | | | | | | | | | | | |
|----|----|----|----|----|----|----|----|----|----|----|------|
| 20 | 19 | 47 | 46 | 45 | 44 | 43 | 42 | 41 | 40 | | |
| 45 | 35 | 46 | 35 | 50 | 54 | 52 | 54 | 52 | 53 | 54 | 35.7 |

WILLIAM ST. 970
 (4502) 08 14 20 4530



CHARLES ST



KITCHENER STREET 1050

