

ITEM 18
MANAGER'S REPORT NO. 37
COUNCIL MEETING May 14/73

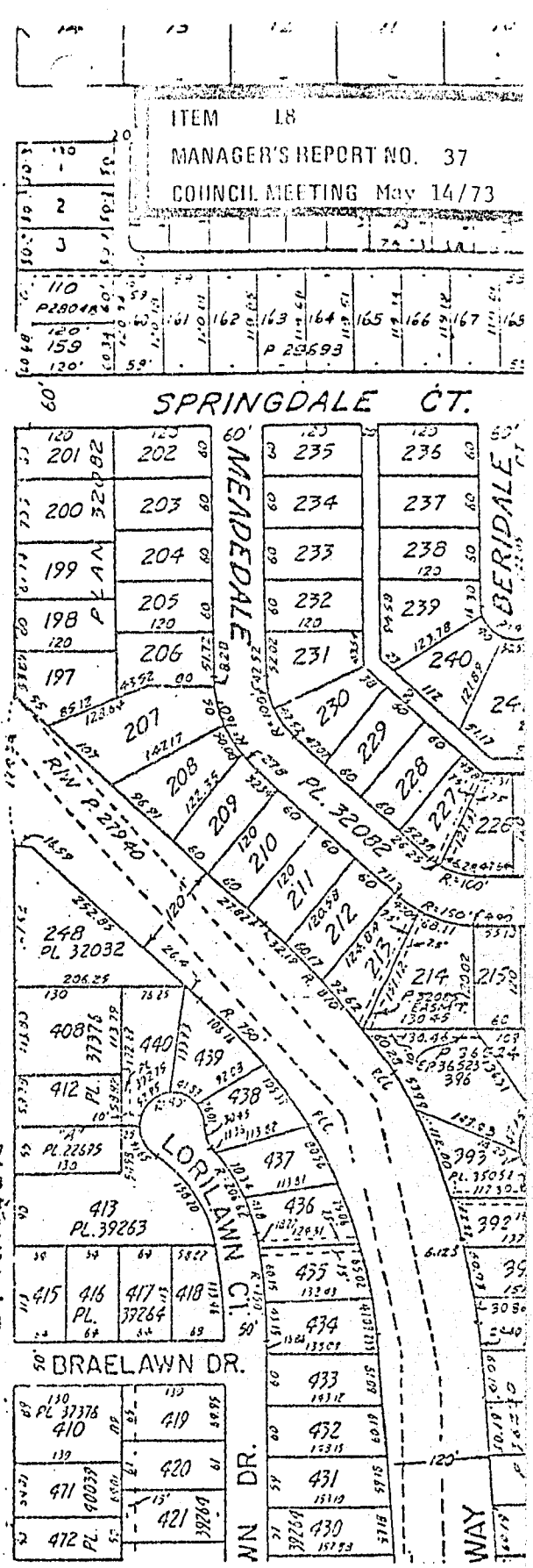
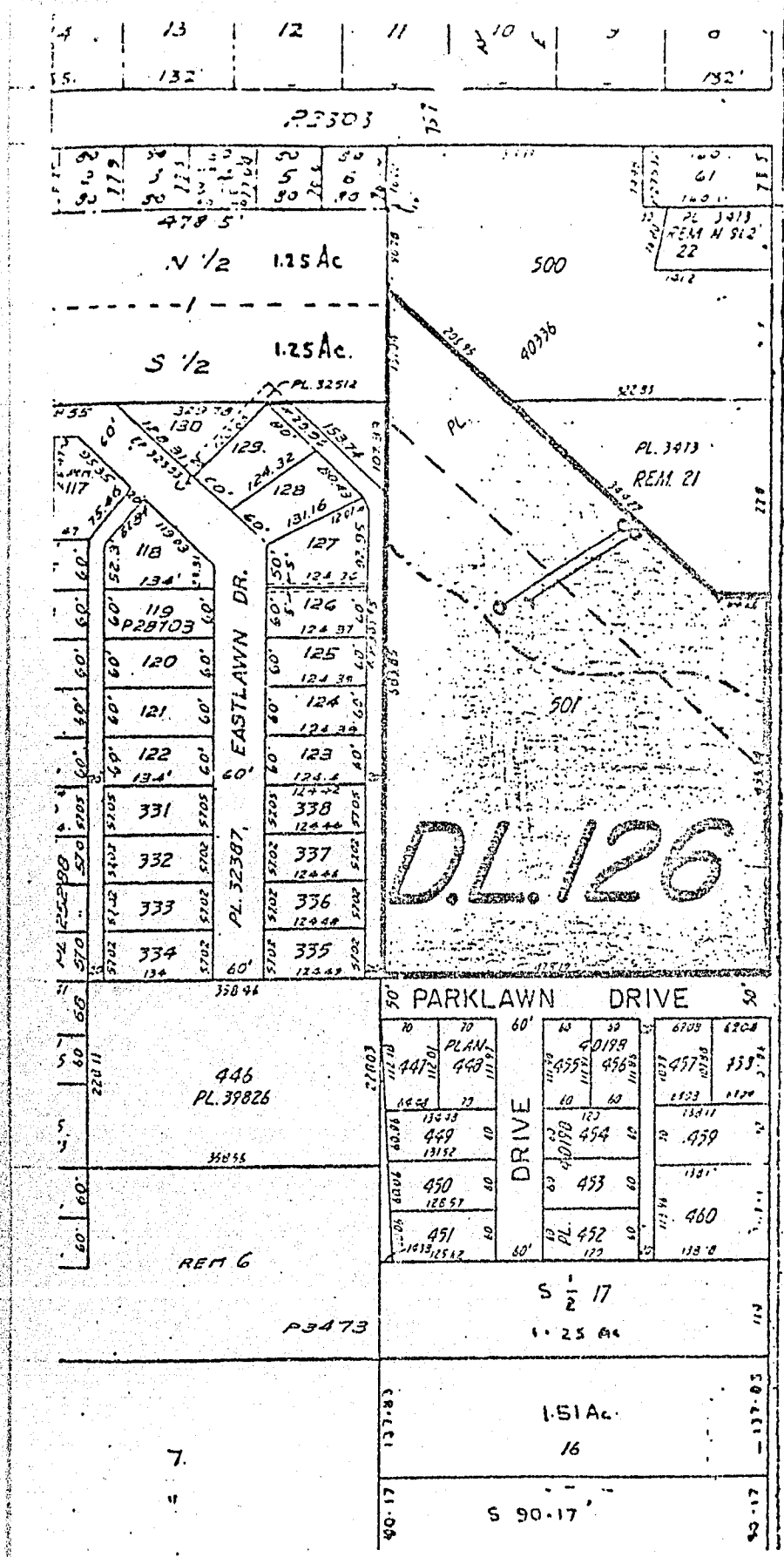
18. Re: Beecher Park - Sewer Easement

The two large parcels of private property located north of Beecher Park are to be subdivided into 13 new lots. A storm and sanitary sewer design has been prepared for this subdivision by Vector Engineering Services Limited. Their design shows that the connecting link for the two sewer lines passes through the part of Beecher Park which is eventually to become a major North-South road link in the Municipality. The designers considered installing the sewers entirely on the future road allowance, but were unable to provide sufficient cover over the lines. This proposed route does not interfere with any of the existing facilities or trees in the park. The new sanitary sewer line will connect with an existing manhole located in the park, and the storm sewer will spill into the existing open water course. In the opinion of the Parks and Recreation staff, this will not be a hindrance to the park development or the patrons using the park. (See attachments).

The Parks and Recreation Commission authorized the granting of the required easement.

RECOMMENDATION:

THAT the Mayor and Clerk be authorized to execute the easement.



PARKS & RECREATION DEPARTMENT
• BEECHER PARK.



ENGINEERING DEPT REQUEST FOR AN EASEMENT THROUGH
PARK ON PROPERTY SCHEDULED FOR A ROAD.

KEY

- PRESENT PARK BOUNDARY
- - - - - MOTOR ROAD SOUTHERN BOUNDARY
- - - - - OPEN WATER COURSE
- - - - - - SANITARY SEWER
- - - - - - STORM SEWER

SCALE 1" = 200'

DATE MAY 9, 1973

(P)