

11. Re: School Crosswalk at Willingdon Avenue and Sardis Street

The Engineering Department is receiving a number of enquiries concerning previous requests which have been before the Traffic Safety Committee for the installation of a school patrol actuated signal at the intersection of Willingdon Avenue and Sardis Street. A crosswalk at this location serves the Chaffey-Burke School (see attached sketch).

Following is a report on the intersection which was submitted by the Engineer to the Traffic Safety Committee, and subsequently referred to Council on November 22, 1971:

"The installation of a special school crossing signal is justified if all four of the following conditions are met:

1. The location must already be patrolled by a school Safety Patrol.
2. The crossing must be of a four-lane or over multi-lane street.
3. The crossing must be on a street posted with up to and including a 30 m.p.h. speed limit.
4. As a result of a traffic gap count taken specially for this purpose, it must be established that, on average, during the maximum half-hour crossing period within the 8:00 a.m. - 9:00 a.m. school crossing interval, there are less than 15 - 8 second or longer gaps. And further, that this gap must be apparent for both directions of traffic at the same time."

For a warrant to be established for the installation of a signal such as is being requested, all four conditions must be met. The first three conditions have been met although the recent widening of Willingdon Avenue to four lanes has not yet been marked. Readings which were taken by radar measurement on August 31, 1972, show that the number of gaps are presently 16 in number; this number of gaps, of course, is so close to the warrant of 15 that one might conclude that the fourth warrant has been met.

The Engineer feels that an important factor that warrants further study is the installation of a full traffic signal at Willingdon and Grange in the immediate future. Insofar as can be anticipated, this will have an impact on the number of gaps in the traffic on Willingdon at Sardis. The only way to check this is by actual measurement after the installation of the signal. While these measurements are being taken, the R.C.M.P. Traffic Division will provide as much attention as possible to the subject location.

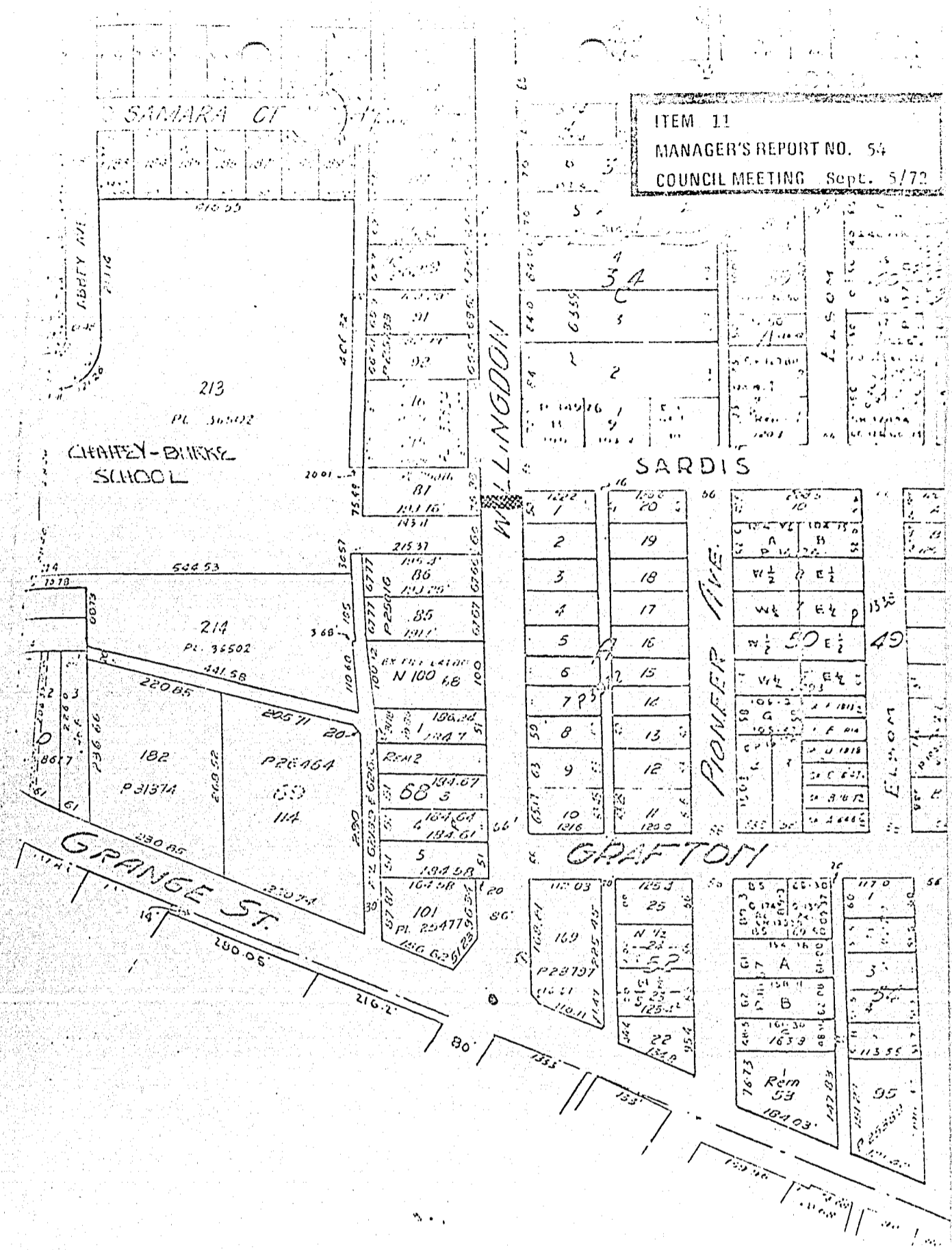
RECOMMENDATIONS:

THAT traffic conditions at the intersection of Willingdon Avenue and Sardis Street be studied again following installation of a full traffic signal at Willingdon and Grange; and

THAT a report of the findings be forwarded to the Traffic Safety Committee as soon as possible; and

THAT a copy of this report item be sent to the Officer In Charge, Burnaby Detachment, R.C.M.P.

ITEM 11
 MANAGER'S REPORT NO. 54
 COUNCIL MEETING Sept. 5/72



SCHOOL (HATCHED)
 SIGNAL IN PROCESS
 (BEARING DIMENSIONED)

D O N S