

CITY OF BURNABY

BYLAW NO. 9986

A BYLAW to amend Bylaw No. 4742, being
Burnaby Zoning Bylaw 1965

WHEREAS application for rezoning has been made to the Council;


AND WHEREAS the Council has held a public hearing thereon after duly giving notice of the hearing as prescribed by sections 956 and 957 of the Municipal Act R.S.B.C. 1979;


NOW THEREFORE the Council of the City of Burnaby ENACTS as follows:

1. This Bylaw may be cited as BURNABY ZONING BYLAW 1965, AMENDMENT BYLAW NO. 58, 1993.

2. The map (hereinafter called "Map 'A'") attached to and forming an integral part of Bylaw No. 4742, being Burnaby Zoning Bylaw 1965, and designated as the Official Zoning Map of the City of Burnaby, is hereby amended according to the Map, consisting of six pages (hereinafter called "Map 'B'"), marginally numbered R.Z. 2006 annexed to this Bylaw, and in accordance with the explanatory legends, notations, references and boundaries designated, described, delimited and specified in particularity shown upon said Map 'B', and the various boundaries and districts shown upon said Map 'B', respectively are an amendment of and in substitution for the respective districts, designated and marked on said Map 'A' insofar as the same are changed, modified or varied thereby, and the said Map 'A' shall be deemed to be and is hereby declared to be amended accordingly and the said Map 'B' is hereby declared to be and shall form an integral part of said Map 'A' as if originally incorporated therein and shall be interpreted accordingly.

Read a first time this	29th	day of	NOVEMBER	1993
Read a second time this	10th	day of	JANUARY	1994
Read a third time this	25th	day of	APRIL	1994
Reconsidered and adopted this	2nd	day of	MAY	1994


MAYOR


CLERK

SCHEDULE "A"

REZONING REFERENCE #49/93

1. **8029 TEXACO DRIVE (ZONING M5)**
LOT 1, D.L. 214, GROUP 1, N.W.D. PLAN 8411
2. **6693 NELSON AVENUE (ZONING C2)**
LOT 31 EXC.: PART ON PLAN WITH BYLAW FILED 65298, D.L. 152, GROUP 1, N.W.D. PLAN 2000
3. **6725 NELSON AVENUE (ZONING C2)**
PARCEL "B" (BY40718), LOT 30, D.L. 152, GROUP 1, N.W.D. PLAN 2000
PARCEL "C" (BY40718), LOT 28, D.L. 152, GROUP 1, N.W.D. PLAN 2000
4. **6750 JUBILEE AVENUE (ZONING C2)**
SOUTH 42', LOT 28, D.L. 152, GROUP 1, N.W.D. PLAN 2000
5. **PTN. OF 6925 HALIFAX STREET (ZONING R4)**
LOT 2, D.L. 132, GROUP 1, N.W.D. PLAN LMP872
6. **4561 TRANS CANADA HWY. (ZONING M1)**
LOT 3, D.L.'S 70 AND 73, GROUP 1, N.W.D. PLAN 13400
7. **516 SPERLING (ZONING M4)**
LOT 10, BLK. 6, D.L. 206, GROUP 1, N.W.D. PLAN 1323
8. **7435 EDMONDS STREET (ZONING C3, R5 AND RM3)**
PARCEL "A", D.L. 30, GROUP 1, N.W.D. PLAN LMP _____

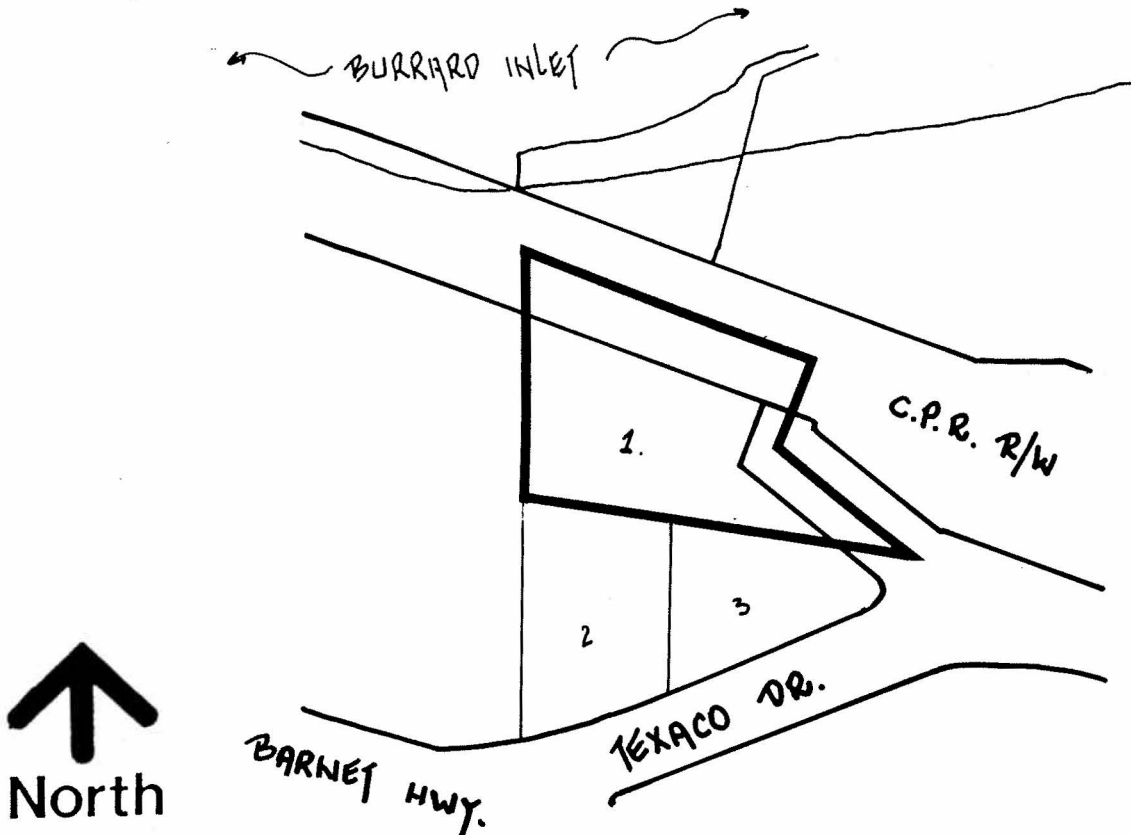
**BYLAW NUMBER 9986 BEING A BYLAW TO AMEND
BYLAW NUMBER 4742 BEING THE BURNABY ZONING BYLAW 1965**

PROPERTY REZONED TO:

P3 PARK AND PUBLIC USE DISTRICT

MAP "B"

LEGAL: LOT 1, D.L. 214, GROUP 1, N.W.D. PLAN 8411



**THE AREA(S) SHOWN
ABOVE OUTLINED
IN BLACK (———)
IS (ARE) REZONED:**

FROM: M5 LIGHT INDUSTRIAL DISTRICT

TO: P3 PARK AND PUBLIC USE DISTRICT

**PLANNING
DEPARTMENT**

SCALE 1:2000

DRAWN J.P.C.

DATE



City of
Burnaby

OFFICIAL ZONING MAP

No. RZ 2006

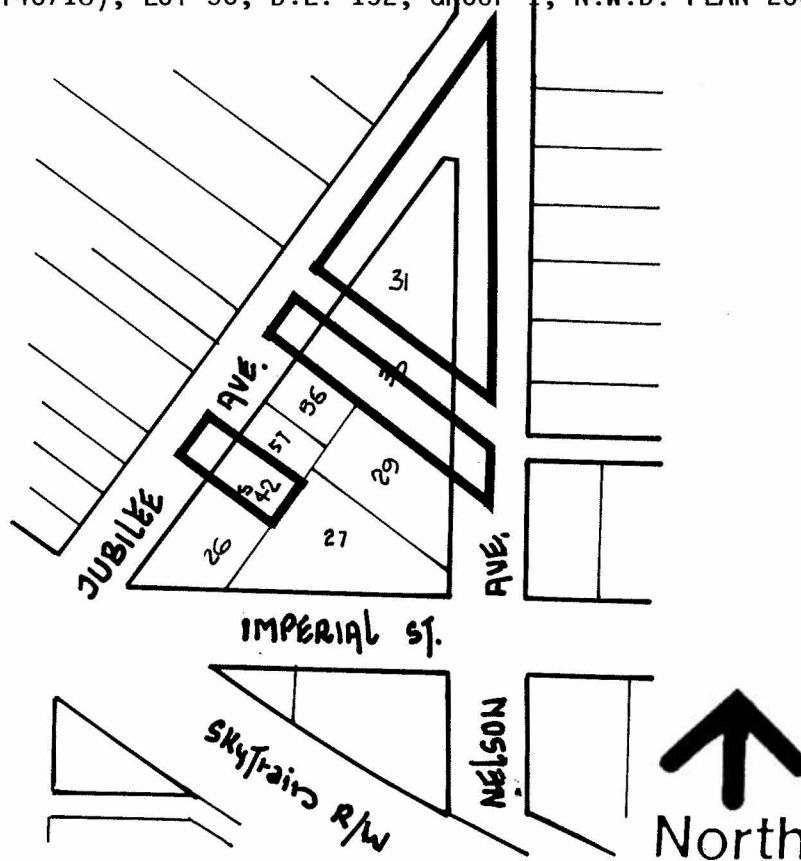
**BYLAW NUMBER 9986 BEING A BYLAW TO AMEND
BYLAW NUMBER 4742 BEING THE BURNABY ZONING BYLAW 1965**

PROPERTY REZONED TO:

P3 PARK AND PUBLIC USE DISTRICT

MAP "B"

LEGAL: LOT 31 EXC.: PART ON PLAN WITH BYLAW FILED 65298, D.L. 152, GROUP 1, N.W.D. PLAN 2000;
PARCEL "C" (BY40718), LOT 28, D.L. 152, GROUP 1, N.W.D. PLAN 2000;
SOUTH 42', LOT 28, D.L. 152, GROUP 1, N.W.D. PLAN 2000
PARCEL "B" (BY40718), LOT 30, D.L. 152, GROUP 1, N.W.D. PLAN 2000



**THE AREA(S) SHOWN
ABOVE OUTLINED
IN BLACK (———)
IS (ARE) REZONED:**

FROM: C2 COMMUNITY COMMERCIAL DISTRICT

TO: P3 PARK AND PUBLIC USE DISTRICT

**PLANNING
DEPARTMENT**

SCALE 1:2000

DRAWN J.P.C.

DATE DECEMBER 1993



City of
Burnaby

OFFICIAL ZONING MAP

No. RZ 2006

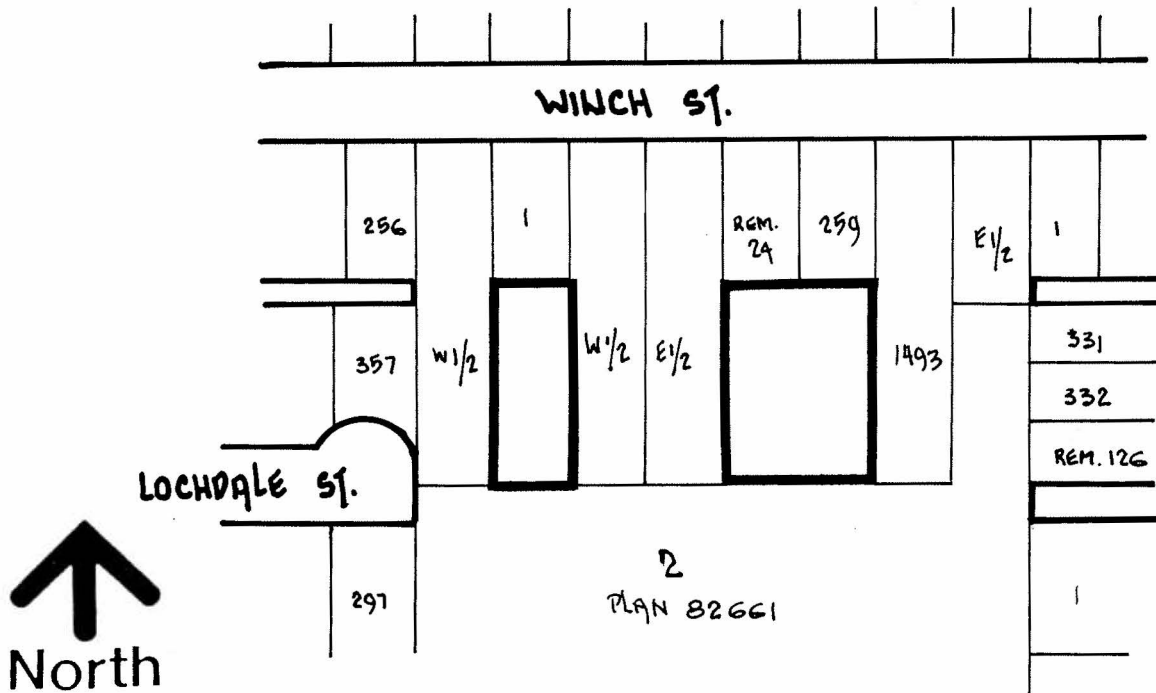
**BYLAW NUMBER 9986 BEING A BYLAW TO AMEND
BYLAW NUMBER 4742 BEING THE BURNABY ZONING BYLAW 1965**

PROPERTY REZONED TO:

P3 PARK AND PUBLIC USE DISTRICT

MAP "B"

LEGAL: LOT 2, D.L. 132, GROUP 1, N.W.D. PLAN LMP872



**THE AREA(S) SHOWN
ABOVE OUTLINED
IN BLACK (———)
IS (ARE) REZONED:**

FROM: R4 RESIDENTIAL DISTRICT

TO: P3 PARK AND PUBLIC USE DISTRICT

PLANNING DEPARTMENT	
SCALE	1:2000
DRAWN	J.P.C.
DATE	DECEMBER 1993



OFFICIAL ZONING MAP

No. RZ 2006

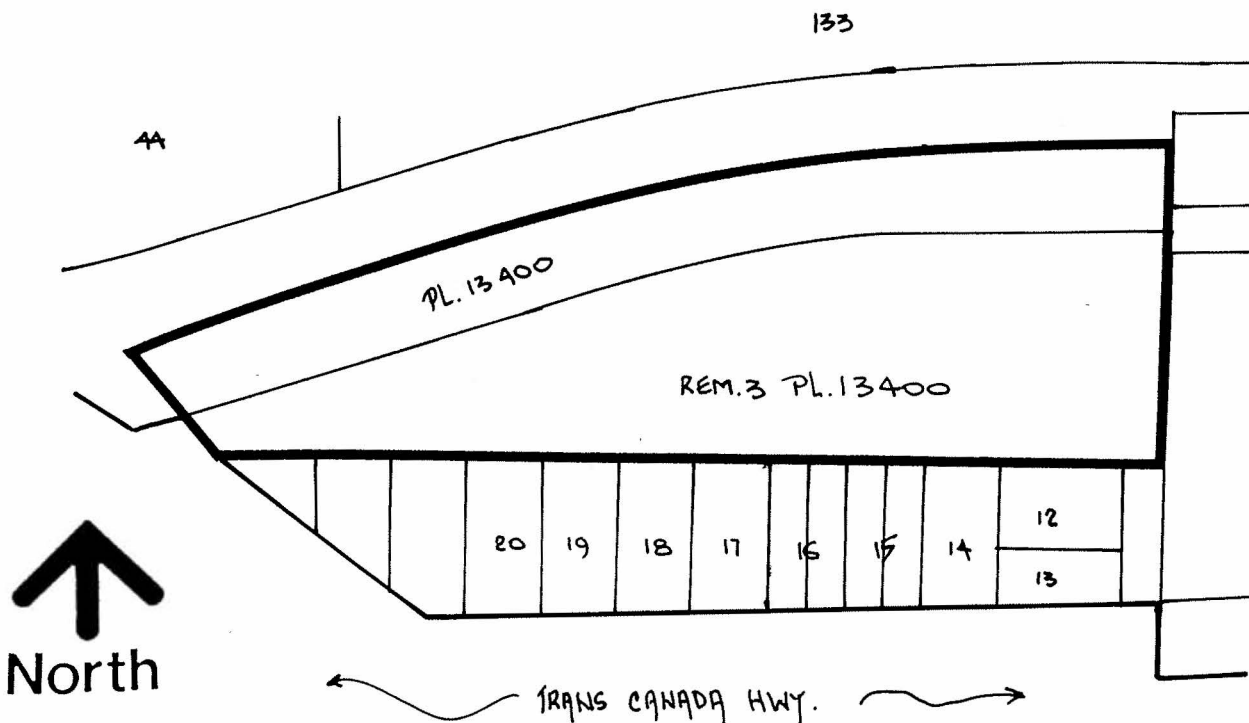
**BYLAW NUMBER 9986 BEING A BYLAW TO AMEND
BYLAW NUMBER 4742 BEING THE BURNABY ZONING BYLAW 1965**

PROPERTY REZONED TO:

P3 PARK AND PUBLIC USE DISTRICT

MAP "B"

LEGAL: LOT 3, D.L.'S 70 AND 73, GROUP 1, N.W.D. PLAN 13400



**THE AREA(S) SHOWN
ABOVE OUTLINED
IN BLACK (———)
IS (ARE) REZONED:**

FROM: M1 MANUFACTURING DISTRICT

TO: P3 PARK AND PUBLIC USE DISTRICT

**PLANNING
DEPARTMENT**

SCALE 1:2000

DRAWN J.P.C.

DATE DECEMBER 1993



OFFICIAL ZONING MAP

No. RZ 2006

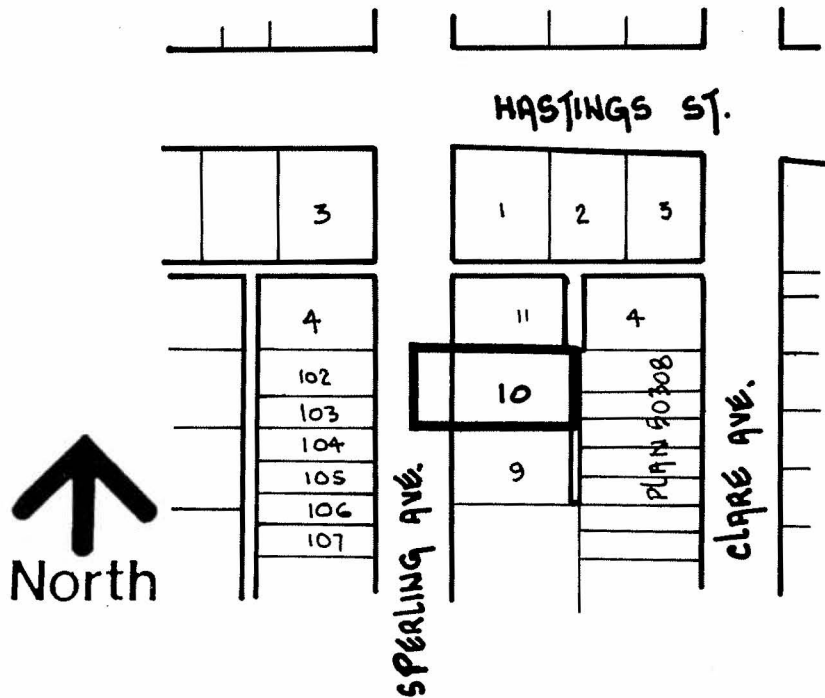
**BYLAW NUMBER 9986 BEING A BYLAW TO AMEND
BYLAW NUMBER 4742 BEING THE BURNABY ZONING BYLAW 1965**

PROPERTY REZONED TO:

P3 PARK AND PUBLIC USE DISTRICT

MAP "B"

LEGAL: LOT 10, BLK. 6, D.L. 206, GROUP 1, N.W.D. PLAN 1323



**THE AREA(S) SHOWN
ABOVE OUTLINED
IN BLACK (———)
IS (ARE) REZONED:**

FROM: M4 SPECIAL INDUSTRIAL DISTRICT

TO: P3 PARK AND PUBLIC USE DISTRICT

PLANNING DEPARTMENT	
SCALE	1:2000
DRAWN	J.P.C.
DATE	DECEMBER 1993



OFFICIAL ZONING MAP

No. RZ 2006

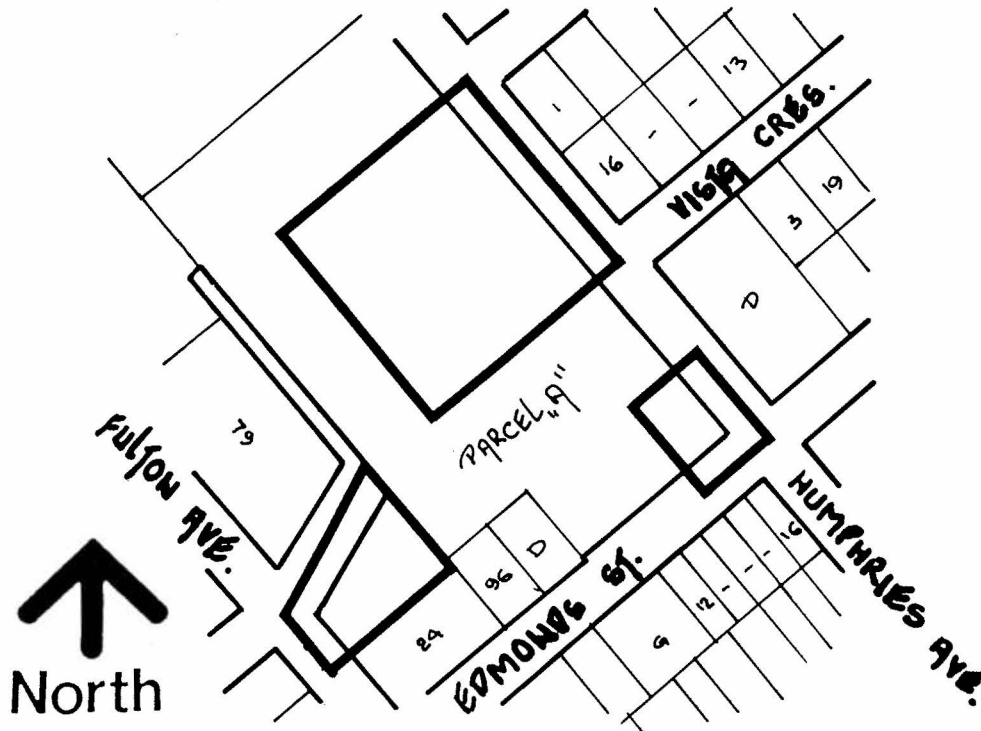
**BYLAW NUMBER 9986 BEING A BYLAW TO AMEND
BYLAW NUMBER 4742 BEING THE BURNABY ZONING BYLAW 1965**

PROPERTY REZONED TO:

P3 PARK AND PUBLIC USE DISTRICT

MAP "B"

LEGAL: PARCEL "A", D.L. 30, GROUP 1, N.W.D. PLAN LMP (UNREGISTERED)



**THE AREA(S) SHOWN
ABOVE OUTLINED
IN BLACK (———)
IS (ARE) REZONED:**

FROM: R5 RESIDENTIAL DISTRICT, RM3 MULTIPLE FAMILY RESIDENTIAL DISTRICT AND
C3 GENERAL COMMERCIAL DISTRICT

TO: P3 PARK AND PUBLIC USE DISTRICT

**PLANNING
DEPARTMENT**

SCALE	N.T.S.
DRAWN	J.P.C.
DATE	DECEMBER 1993



City of
Burnaby

OFFICIAL ZONING MAP

No. RZ 2006