

CITY OF BURNABY

BYLAW NO. 9969

A BYLAW to amend Bylaw No. 4742, being
Burnaby Zoning Bylaw 1965

WHEREAS application for rezoning has been made to the Council;

AND WHEREAS the Council has held a public hearing thereon after duly giving notice of the time and place of such hearing as prescribed by Sections 956 and 957 of the Municipal Act, R.S.B.C. 1979;

NOW THEREFORE the Council of the City of Burnaby ENACTS as follows:

1. This Bylaw may be cited as BURNABY ZONING BYLAW 1965, AMENDMENT BYLAW NO. 54, 1993.
2. The Map (hereinafter called "Map 'A'"), attached to and forming an integral part of Bylaw No. 4742, being "Burnaby Zoning Bylaw 1965", and designated as the Official Zoning Map of the City of Burnaby, is hereby amended according to the Map (hereinafter called "Map 'B'"), marginally numbered R.Z. 2004, annexed to this Bylaw, and in accordance with the explanatory legend, notations, references and boundaries designated, described, delimited and specified in particularity shown upon said Map 'B'; and the various boundaries and districts shown upon said Map 'B' respectively are an amendment of and in substitution for the respective districts, designated and marked on said Map 'A' insofar as the same are changed, modified or varied thereby, and the said Map 'A' shall be deemed to be and is hereby declared to be amended accordingly and the said Map 'B' is hereby declared to be and shall form an integral part of said Map 'A', as if originally incorporated therein and shall be interpreted accordingly.

3. The Comprehensive Development Plan entitled "BAINBRIDGE/ELLERSLIE DEVELOPMENT" prepared by J. & J.K. PROJECTS LTD. and on file in the office of the Director Planning and Building, is deemed to be attached to and form part of this Bylaw and any development on the lands rezoned by this Bylaw shall be in conformity with the said Comprehensive Development Plan.

Read a first time this 4th day of October 199 3

Read a second time this 1st day of November 199 3

Read a third time 2nd day of May 199 4

Received the approval of the Minister of Transportation and Highways
this 1st day of JUNE 199 4

Reconsidered and adopted this 27th day of JUNE 199 4


MAYOR


CLERK

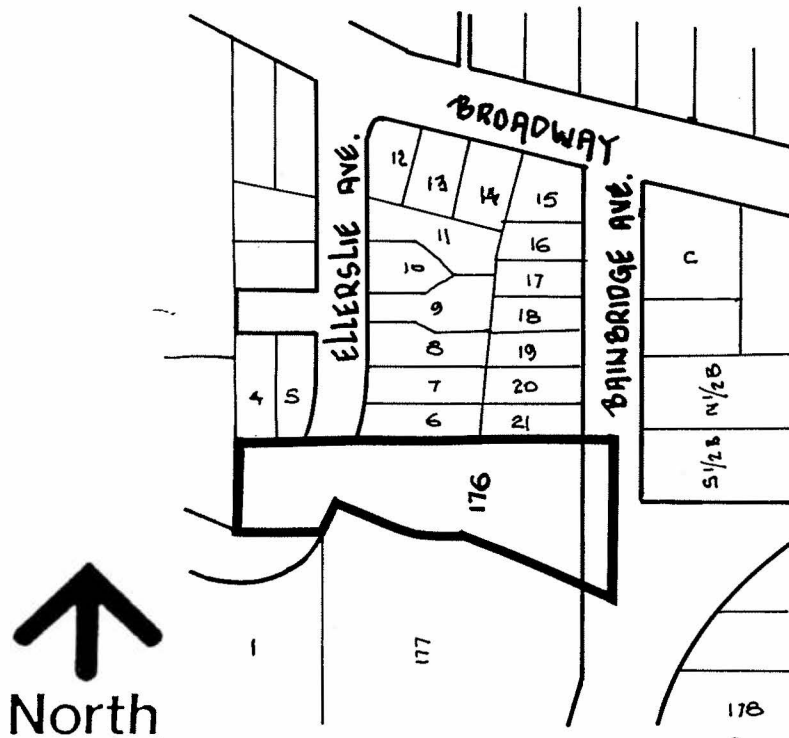
**BYLAW NUMBER 9969 BEING A BYLAW TO AMEND
BYLAW NUMBER 4742 BEING THE BURNABY ZONING BYLAW 1965**

PROPERTY REZONED TO:

CD COMPREHENSIVE DEVELOPMENT DISTRICT (BASED ON R2 RESIDENTIAL DISTRICT AND APARTMENT STUDY AREA F: LOUGHEED-BAINBRIDGE GUIDELINES, AND IN ACCORDANCE WITH THE DEVELOPMENT PLAN ENTITLED "BAINBRIDGE/ELLERSLIE DEVELOPMENT" PREPARED BY J. & J.K. PROJECTS LTD.)

LEGAL: LOT 176, D.L. 59, GROUP 1, N.W.D. PLAN 52964

MAP 'B'



**THE AREA(S) SHOWN
ABOVE OUTLINED
IN BLACK (—)
IS (ARE) REZONED:**

FROM: A2 SMALL HOLDINGS DISTRICT

TO: CD COMPREHENSIVE DEVELOPMENT DISTRICT (BASED ON R2 RESIDENTIAL DISTRICT AND APARTMENT STUDY AREA F: LOUGHEED-BAINBRIDGE GUIDELINES, AND IN ACCORDANCE WITH THE DEVELOPMENT PLAN ENTITLED "BAINBRIDGE/ELLERSLIE DEVELOPMENT" PREPARED BY J. & J.K. PROJECTS LTD.)

PLANNING DEPARTMENT	
SCALE	N.T.S.
DRAWN	J.P.C.
DATE	SEPTEMBER 1993



OFFICIAL ZONING MAP

No. RZ 2004