

CITY OF BURNABY

BYLAW NO. 9968

A BYLAW to amend Bylaw No. 4742, being Burnaby Zoning Bylaw 1965, as amended by Bylaw No. 9258, being Burnaby Zoning Bylaw 1965, Amendment Bylaw No. 56, 1989

WHEREAS application for rezoning has been made to the Council;

AND WHEREAS the Council has held a public hearing thereon after duly giving notice of the hearing as prescribed by Sections 956 and 957 of the Municipal Act R.S.B.C. 1979;

NOW THEREFORE the Council of the City of Burnaby ENACTS as follows:

1. This Bylaw may be cited as BURNABY ZONING BYLAW 1965, AMENDMENT BYLAW NO. 53, 1993.
2. Bylaw No 4742, as amended by Bylaw No. 9258, is further amended as follows:
 - (a) The Map (hereinafter called "Map 'A'"), attached to and forming an integral part of Bylaw No. 4742, being "Burnaby Zoning Bylaw 1965", and designated as the Official Zoning Map of the City of Burnaby, is hereby amended according to the Map (hereinafter called "Map 'B'"), marginally numbered R.Z. 2003, annexed to this Bylaw, and in accordance with the explanatory legend, notations, references and boundaries designated, described, delimited and specified in particularity shown upon said Map 'B'; and the various boundaries and districts shown upon said Map 'B' respectively are an amendment of and in addition to the respective districts, designated and marked on said Map 'A' insofar as the same are changed, modified or varied thereby, and the said Map 'A' shall be deemed to be and is hereby declared to be amended

accordingly and the said Map 'B' is hereby declared to be and shall form an integral part of said Map 'A', as if originally incorporated therein and shall be interpreted accordingly.

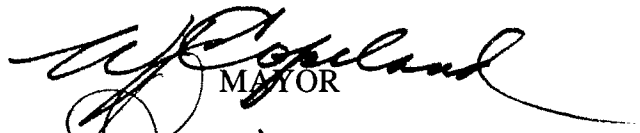

(b) The Comprehensive Development Plan more particularly described in Bylaw No. 9258 is amended as may be necessary by the development plan entitled "SADIE'S LUNCH WORKS" prepared by INTERPLAN ARCHITECTURE & PLANNING INC. filed in the office of the Director Planning and Building; and any development on the lands rezoned by this Bylaw shall be in conformity with the said Comprehensive Development Plan as amended.

Read a first time this 04th day of October 1993

Read a second time this 01st day of November 1993

Read a third time this 13th day of December 1993

Reconconsidered and adopted this 20th day of December 1993


MAYOR

DEPUTY CLERK

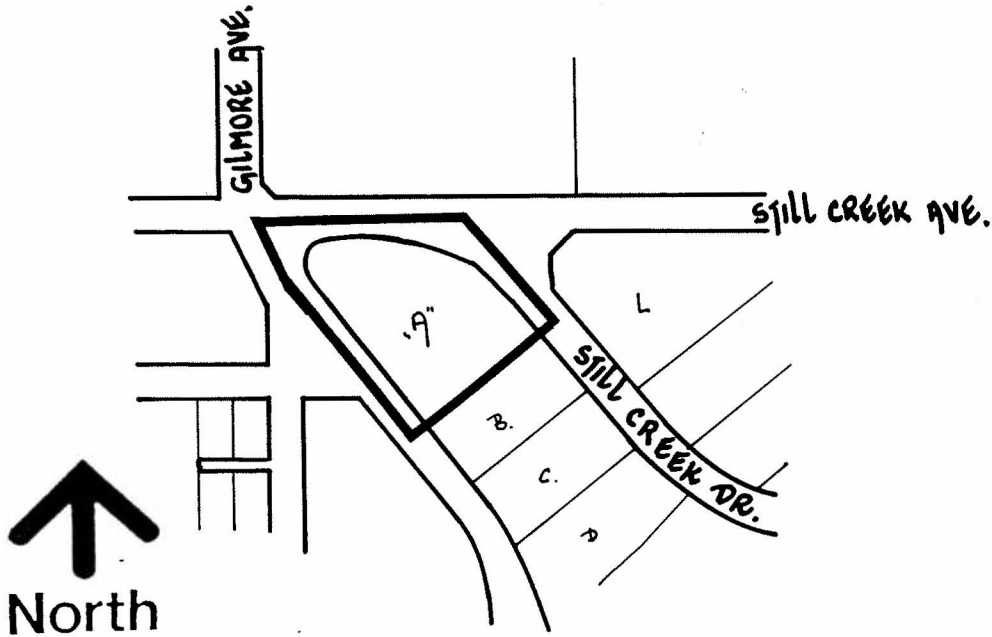
**BYLAW NUMBER 9968 BEING A BYLAW TO AMEND
BYLAW NUMBER 4742 BEING THE BURNABY ZONING BYLAW 1965**

PROPERTY REZONED TO:

"AMENDED" CD COMPREHENSIVE DEVELOPMENT DISTRICT (BASED ON M5 LIGHT INDUSTRIAL DISTRICT AND M2R GENERAL INDUSTRIAL DISTRICT FOR RESTAURANT USE GUIDELINES, AND IN ACCORDANCE WITH THE DEVELOPMENT PLAN ENTITLED "SADIE'S LUNCH WORKS" PREPARED BY INTERPLAN ARCHITECTURE & PLANNING INC.)

MAP "B"

LEGAL: LOT A, D.L. 69, GROUP 1, N.W.D. PLAN 71013



**THE AREA(S) SHOWN
ABOVE OUTLINED
IN BLACK (———)
IS (ARE) REZONED:**

FROM: CD COMPREHENSIVE DEVELOPMENT DISTRICT (BASED ON M5 LIGHT INDUSTRIAL DISTRICT GUIDELINES)

TO: CD COMPREHENSIVE DEVELOPMENT DISTRICT (BASED ON M5 LIGHT INDUSTRIAL DISTRICT AND M2R GENERAL INDUSTRIAL DISTRICT FOR RESTAURANT USE GUIDELINES, AND IN ACCORDANCE WITH THE DEVELOPMENT PLAN ENTITLED "SADIE'S LUNCH WORKS" PREPARED BY INTERPLAN ARCHITECTURE & PLANNING INC.)

**PLANNING
DEPARTMENT**

SCALE	N.I.S.
DRAWN	J.P.C.
DATE	SEPTEMBER 1993



City of
Burnaby

OFFICIAL ZONING MAP

No. RZ 2003