

CITY OF BURNABY

BYLAW NO. 9967

A BYLAW to amend Bylaw No. 4742, being
Burnaby Zoning Bylaw 1965

WHEREAS application for rezoning has been made to the Council;

AND WHEREAS the Council has held a public hearing thereon after duly giving notice of the hearing as prescribed by sections 956 and 957 of the Municipal Act R.S.B.C. 1979;

NOW THEREFORE the Council of the City of Burnaby ENACTS as follows:

1. This Bylaw may be cited as BURNABY ZONING BYLAW 1965, AMENDMENT BYLAW NO. 52, 1993.
2. The map (hereinafter called "Map 'A'") attached to and forming an integral part of Bylaw No. 4742, being Burnaby Zoning Bylaw 1965, and designated as the Official Zoning Map of the City of Burnaby, is hereby amended according to the Map (hereinafter called "Map 'B'"), marginally numbered R.Z. 2002 annexed to this Bylaw, and in accordance with the explanatory legend, notations, references and boundaries designated, described, delimited and specified in particularity shown upon said Map 'B', and the various boundaries and districts shown upon said Map 'B', respectively are an amendment of and in substitution for the respective districts, designated and marked on said Map 'A' insofar as the same are changed, modified or varied thereby, and the said Map 'A' shall be deemed to be and is hereby declared to be amended accordingly and the said Map 'B' is hereby declared to be and shall form an

integral part of said Map 'A' as if originally incorporated therein and shall be interpreted accordingly.

Read a first time this 4th day of OCTOBER 1993

Read a second time this 1st day of NOVEMBER 1993

Read a third time 9th day of JANUARY 1995

Received the approval of the Minister of Transportation and Highways
this 16th day of JANUARY 1995

Reconsidered and adopted this 6th day of MARCH 1995


MAYOR


CLERK

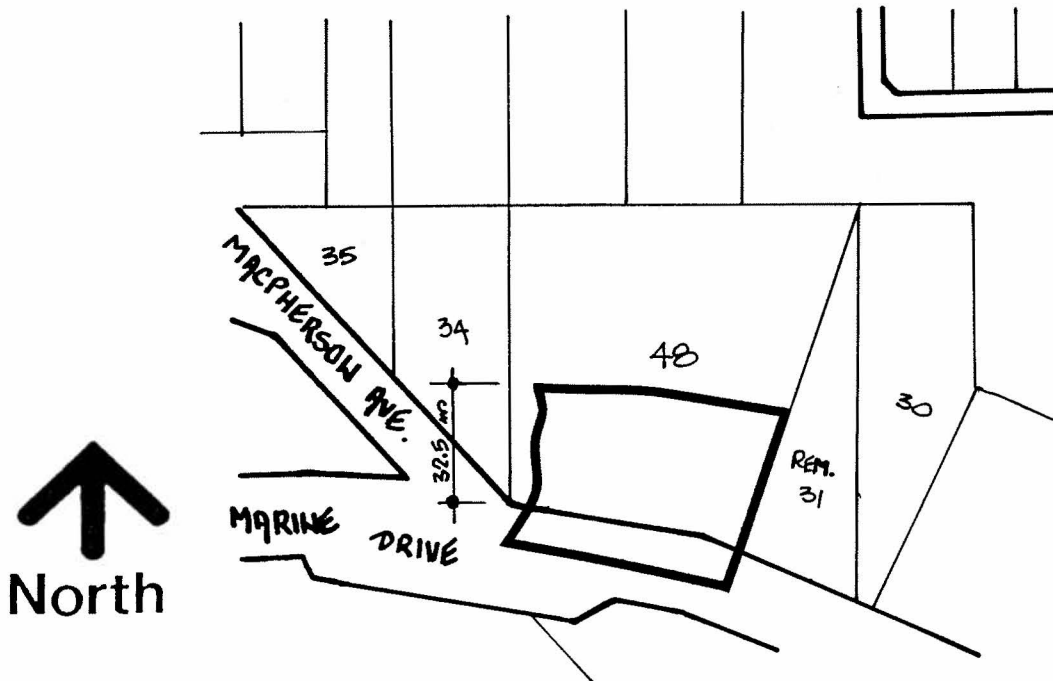
**BYLAW NUMBER 9967 BEING A BYLAW TO AMEND
BYLAW NUMBER 4742 BEING THE BURNABY ZONING BYLAW 1965**

PROPERTY REZONED TO:

R2 RESIDENTIAL DISTRICT

MAP "B"

LEGAL: PTN. OF LOT 48, D.L. 159, GROUP 1, N.W.D. PLAN 25255



**THE AREA(S) SHOWN
ABOVE OUTLINED
IN BLACK (———)
IS (ARE) REZONED:**

FROM: C2 COMMUNITY COMMERCIAL DISTRICT

TO: R2 RESIDENTIAL DISTRICT

PLANNING DEPARTMENT	
SCALE	1:2000
DRAWN	J.P.C.
DATE	OCTOBER 1997



OFFICIAL ZONING MAP

No. RZ 2002