

**CITY OF BURNABY**

**BYLAW NO. 9964**

**A BYLAW to amend Bylaw No. 4742, being  
Burnaby Zoning Bylaw 1965**

WHEREAS application for rezoning has been made to the Council;

AND WHEREAS the Council has held a public hearing thereon after duly giving notice of the hearing as prescribed by sections 956 and 957 of the Municipal Act R.S.B.C. 1979;

NOW THEREFORE the Council of the City of Burnaby ENACTS as follows:

1. This Bylaw may be cited as BURNABY ZONING BYLAW 1965, AMENDMENT BYLAW NO. 49, 1993.
2. The map (hereinafter called "Map 'A'") attached to and forming an integral part of Bylaw No. 4742, being Burnaby Zoning Bylaw 1965, and designated as the Official Zoning Map of the City of Burnaby, is hereby amended according to the Map (hereinafter called "Map 'B'"), marginally numbered R.Z. 1999 annexed to this Bylaw, and in accordance with the explanatory legend, notations, references and boundaries designated, described, delimited and specified in particularity shown upon said Map 'B', and the various boundaries and districts shown upon said Map 'B', respectively are an amendment of and in substitution for the respective districts, designated and marked on said Map 'A' insofar as the same are changed, modified or varied thereby, and the said Map 'A' shall be deemed to be and is hereby declared to be amended accordingly and the said Map 'B' is hereby declared to be and shall form an



integral part of said Map 'A' as if originally incorporated therein and shall be interpreted accordingly.

Read a first time this 4th day of OCTOBER 1993

Read a second time this 1st day of NOVEMBER 1993

Read a third time 13th day of JUNE 1994

RECONSIDERED AND ADOPTED THIS 22nd day of AUGUST 1994

  
MAYOR  
  
DEPUTY CLERK

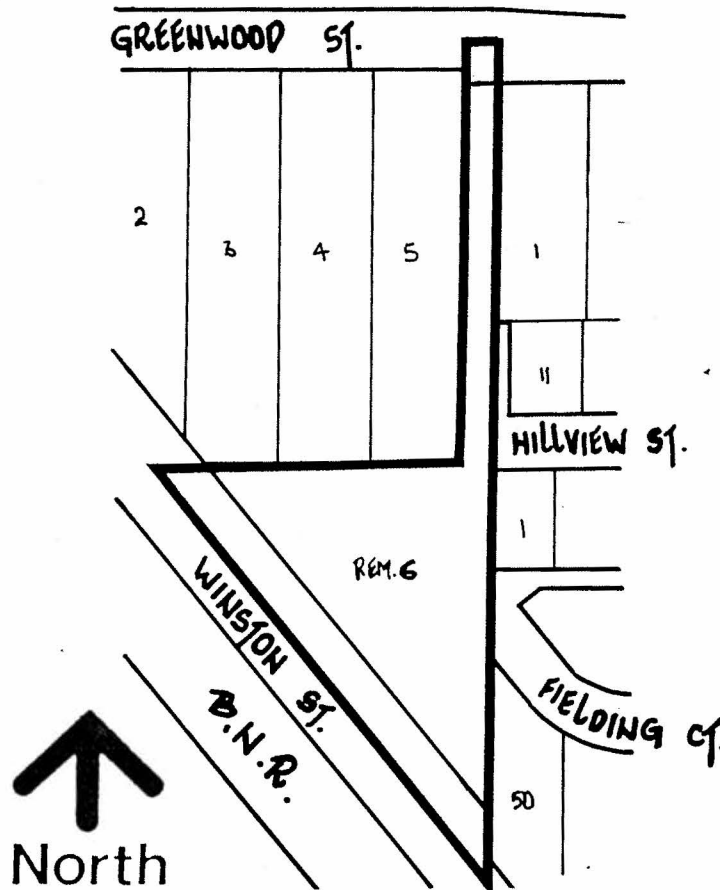
# BYLAW NUMBER 9964 BEING A BYLAW TO AMEND BYLAW NUMBER 4742 BEING THE BURNABY ZONING BYLAW 1965

PROPERTY REZONED TO:

MAP "B"

R2 RESIDENTIAL DISTRICT

LEGAL: LOT 6, EXC. PART ON PLAN WITH BYLAW FILED A54179, D.L. 78, GROUP 1, N.W.D.  
PLAN 11087



THE AREA(S) SHOWN  
ABOVE OUTLINED  
IN BLACK (——)  
IS (ARE) REZONED:

FROM: M5 LIGHT INDUSTRIAL DISTRICT

TO: R2 RESIDENTIAL DISTRICT

PLANNING  
DEPARTMENT

SCALE N.T.S.

DRAWN J.P.C.

DATE SEPTEMBER 1993



City of  
Burnaby

OFFICIAL ZONING MAP

No. RZ 1999