

CITY OF BURNABY

BYLAW NO. 9863

A BYLAW to amend Bylaw No. 6406, being Burnaby
Zoning Bylaw 1965, Amendment Bylaw No.
45, 1973

WHEREAS application for rezoning has been made to the
Council;

AND WHEREAS the Council has held a public hearing
thereon after duly giving notice of the hearing as prescribed by
Sections 956 and 957 of the Municipal Act R.S.B.C. 1979;

NOW THEREFORE the Council of the City of Burnaby ENACTS
as follows:


1. This Bylaw may be cited as BURNABY ZONING BYLAW 1965,
AMENDMENT BYLAW NO. 12, 1993.


2. The Map (hereinafter called "Map 'A'"), attached to and
forming an integral part of Bylaw No. 4742, being "Burnaby Zoning
Bylaw 1965", and designated as the Official Zoning Map of the
City of Burnaby, is hereby amended according to the Map (herein-
after called "Map 'B'"), marginally numbered R.Z. 1963, annexed
to this Bylaw, and in accordance with the explanatory legend,
notations, references and boundaries designated, described,
delimited and specified in particularity shown upon said Map 'B';
and the various boundaries and districts shown upon said Map 'B'
respectively are an amendment of and in substitution for the
respective districts, designated and marked on said Map 'A' inso-
far as the same are changed, modified or varied thereby, and the
said Map 'A' shall be deemed to be and is hereby declared to be
amended accordingly and the said Map 'B' is hereby declared to be
and shall form an integral part of said Map 'A', as if originally
incorporated therein and shall be interpreted accordingly.

3. Bylaw No. 6406 is amended by adding thereto, immediately after section 3, the following:

"4. The Comprehensive Development Plan entitled "SKYSIGNS FOR THE BURNABY VILLA HOTEL" prepared by GALAXIE SIGNS LTD. and on file in the office of the Director Planning and Building, is deemed to be attached to and form part of this Bylaw and any signs erected at the top of the tower of the Burnaby Villa Hotel on the lands rezoned by this Bylaw shall be in conformity with the said Comprehensive Development Plan."

Read a first time this	1st	day of	MARCH	1993
Read a second time this	29th	day of	MARCH	1993
Read a third time this	5th	day of	APRIL	1993
Reconsidered and adopted this	13th	day of	APRIL	1993


MAYOR

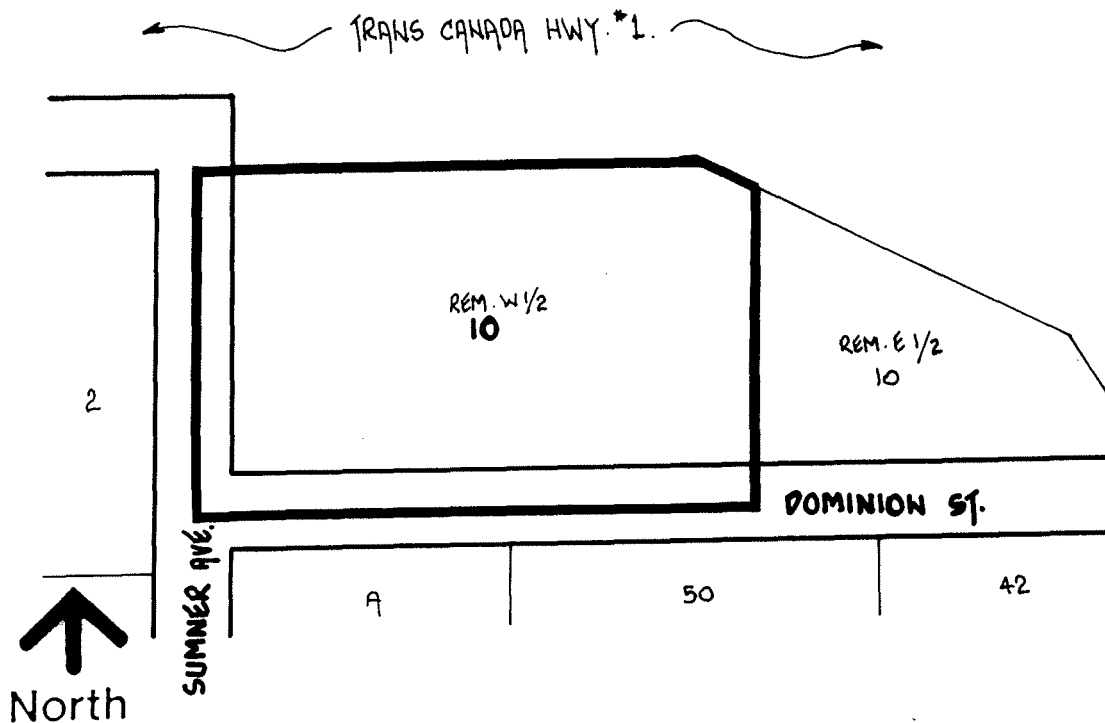

DEPUTY CLERK

**BYLAW NUMBER 9863 BEING A BYLAW TO AMEND
BYLAW NUMBER 4742 BEING THE BURNABY ZONING BYLAW 1965**

PROPERTY REZONED TO:

"AMENDED" CD COMPREHENSIVE DEVELOPMENT DISTRICT (BASED ON P2 ADMINISTRATION AND ASSEMBLY DISTRICT AND C1 NEIGHBOURHOOD COMMERCIAL DISTRICT GUIDELINES AND IN ACCORDANCE WITH THE DEVELOPMENT PLAN ENTITLED "SKYSIGNS FOR THE BURNABY VILLA HOTEL" PREPARED BY GALAXIE SIGNS LTD.)

LEGAL: LOT 10 W-1/2, PLAN 3216, D.L. 70, GROUP 1, N.W.D. EXCEPT PLAN 26625



**THE AREA(S) SHOWN
ABOVE OUTLINED
IN BLACK (—)
IS (ARE) REZONED:**

FROM: CD COMPREHENSIVE DEVELOPMENT DISTRICT (BASED ON P2 ADMINISTRATION AND ASSEMBLY DISTRICT AND C1 NEIGHBOURHOOD COMMERCIAL DISTRICT GUIDELINES)

TO: CD COMPREHENSIVE DEVELOPMENT DISTRICT (BASED ON P2 ADMINISTRATION AND ASSEMBLY DISTRICT AND C1 NEIGHBOURHOOD COMMERCIAL DISTRICT GUIDELINES AND IN ACCORDANCE WITH THE DEVELOPMENT PLAN ENTITLED "SKYSIGNS FOR THE BURNABY VILLA HOTEL" PREPARED BY GALAXIE SIGNS LTD.)

PLANNING DEPARTMENT	
SCALE	1:2000
DRAWN	J.P.C.
DATE	FEBRUARY 1993



OFFICIAL ZONING MAP

No. RZ 1963