

THE CORPORATION OF THE DISTRICT OF BURNABY

BYLAW NO. 9782

A BYLAW to amend Bylaw No. 9472, being Burnaby Zoning Bylaw 1965, Amendment Bylaw No. 57, 1990

WHEREAS application for rezoning has been made to the Council.

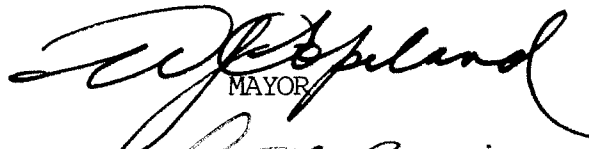
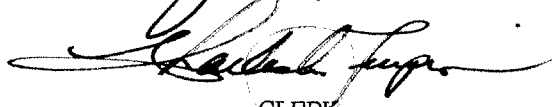
AND WHEREAS the Council has held a public hearing thereon after duly giving notice of the hearing as prescribed by Sections 956 and 957 of the Municipal Act R.S.B.C. 1979.

NOW THEREFORE the Council of The Corporation of the District of Burnaby ENACTS as follows:

1. This Bylaw may be cited as BURNABY ZONING BYLAW 1965, AMENDMENT BYLAW NO. 40, 1992.
2. Bylaw No. 9782 is amended by adding thereto, immediately after section 3, the following:

"4. The Comprehensive Development Plan entitled "WILLINGDON PARK SLOUGH ESTATES CANADA PHASE III" prepared by INTERPLAN ARCHITECTURE AND PLANNING INC. and on file in the office of the Director Planning and Building Inspection, is deemed to be attached to and form part of this Bylaw and any development on the lands rezoned by this Bylaw shall be in conformity with the said Comprehensive Development Plan."

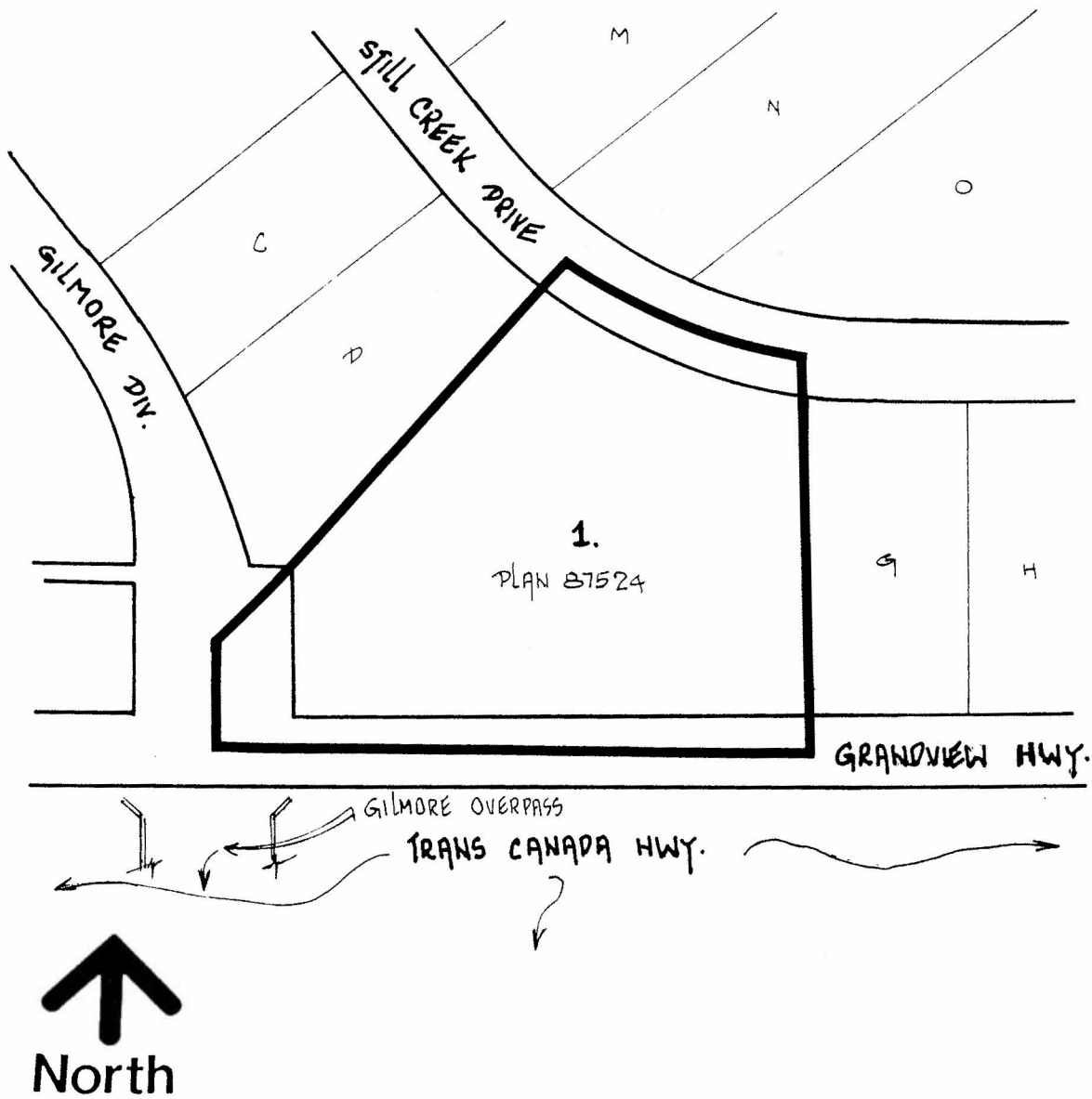
Read a first time this 8th day of SEPTEMBER 1992  
Read a second time this 5th day of OCTOBER 1992  
Read a third time this 2nd day of NOVEMBER 1992  
Reconsidered and adopted this 30th day of NOVEMBER 1992

  
MAYOR  
  
CLERK

BYLAW NUMBER 9782 BEING A BYLAW TO AMEND RZ #36/92  
 BYLAW NUMBER 4742 BEING THE BURNABY ZONING BYLAW 1965

PROPERTY REZONED TO: "AMENDED" CD COMPREHENSIVE DEVELOPMENT DISTRICT (BASED ON M5 LIGHT INDUSTRIAL DISTRICT GUIDELINES AND IN ACCORDANCE WITH THE DEVELOPMENT PLAN ENTITLED "WILLINGDON PARK SLOUGH ESTATES CANADA PHASE III" PREPARED BY INTERPLAN ARCHITECTURE & PLANNING INC.)

LEGAL: LOT 1, D.L.'S 69 AND 70, PLAN 87524



THE AREA(S) SHOWN ABOVE  
 OUTLINED IN BLACK (—)  
 IS (ARE) REZONED:

FROM: CD COMPREHENSIVE DEVELOPMENT DISTRICT (BASED ON M5  
 LIGHT INDUSTRIAL DISTRICT GUIDELINES)

TO: "AMENDED" CD COMPREHENSIVE DEVELOPMENT DISTRICT (BASED  
 ON M5 LIGHT INDUSTRIAL DISTRICT GUIDELINES AND IN  
 ACCORDANCE WITH THE DEVELOPMENT PLAN ENTITLED "WILLINGDON  
 PARK SLOUGH ESTATES CANADA PHASE III" PREPARED BY  
 INTERPLAN ARCHITECTURE & PLANNING INC.)

PLANNING DEPARTMENT	THE CORPORATION OF THE DISTRICT OF BURNABY	
SCALE	1:2000	<b>OFFICIAL ZONING MAP</b> No. RZ 1941
DRAWN	J.P.C.	
DATE	SEPTEMBER 1992	