

CITY OF BURNABY

BYLAW NO. 9746

A BYLAW to amend Bylaw No. 4742, being Burnaby Zoning Bylaw 1965, as amended by Bylaw No. 8354, being Burnaby Zoning Bylaw 1965, Amendment Bylaw No. 18, 1985

WHEREAS application for rezoning has been made to the Council;

AND WHEREAS the Council has held a public hearing thereon after duly giving notice of the hearing as prescribed by Sections 956 and 957 of the Municipal Act R.S.B.C. 1979;

NOW THEREFORE the Council of The Corporation of the District of Burnaby ENACTS as follows:

1. This Bylaw may be cited as BURNABY ZONING BYLAW 1965, AMENDMENT BYLAW NO. 30, 1992.

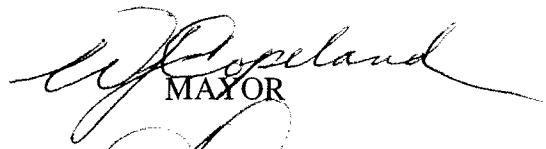

2. Bylaw No 4742, as amended by Bylaw No. 8354, is further amended as follows:

(a) The Map (hereinafter called "Map 'A'"), attached to and forming an integral part of Bylaw No. 4742, being "Burnaby Zoning Bylaw 1965", and designated as the Official Zoning Map of the City of Burnaby, is hereby amended according to the Map (hereinafter called "Map 'B'"), marginally numbered R.Z. 1932, annexed to this Bylaw, and in accordance with the explanatory legend, notations, references and boundaries designated, described, delimited and specified in particularity shown upon said Map 'B'; and the various boundaries and districts shown upon said Map 'B' respectively are an amendment of and in addition to the respective districts, designated and marked on said Map 'A' insofar as the same are changed, modified or

varied thereby, and the said Map 'A' shall be deemed to be and is hereby declared to be amended accordingly and the said Map 'B' is hereby declared to be and shall form an integral part of said Map 'A', as if originally incorporated therein and shall be interpreted accordingly.

(b) The Comprehensive Development Plan more particularly described in Bylaw No. 8354 is amended as may be necessary by the development plan entitled "WILLINGDON PARK PHASE IV" prepared by INTERPLAN ARCHITECTURE AND PLANNING INC. and filed in the office of the Director Planning and Building; and any development on the lands rezoned by this Bylaw shall be in conformity with the said Comprehensive Development Plan as amended.

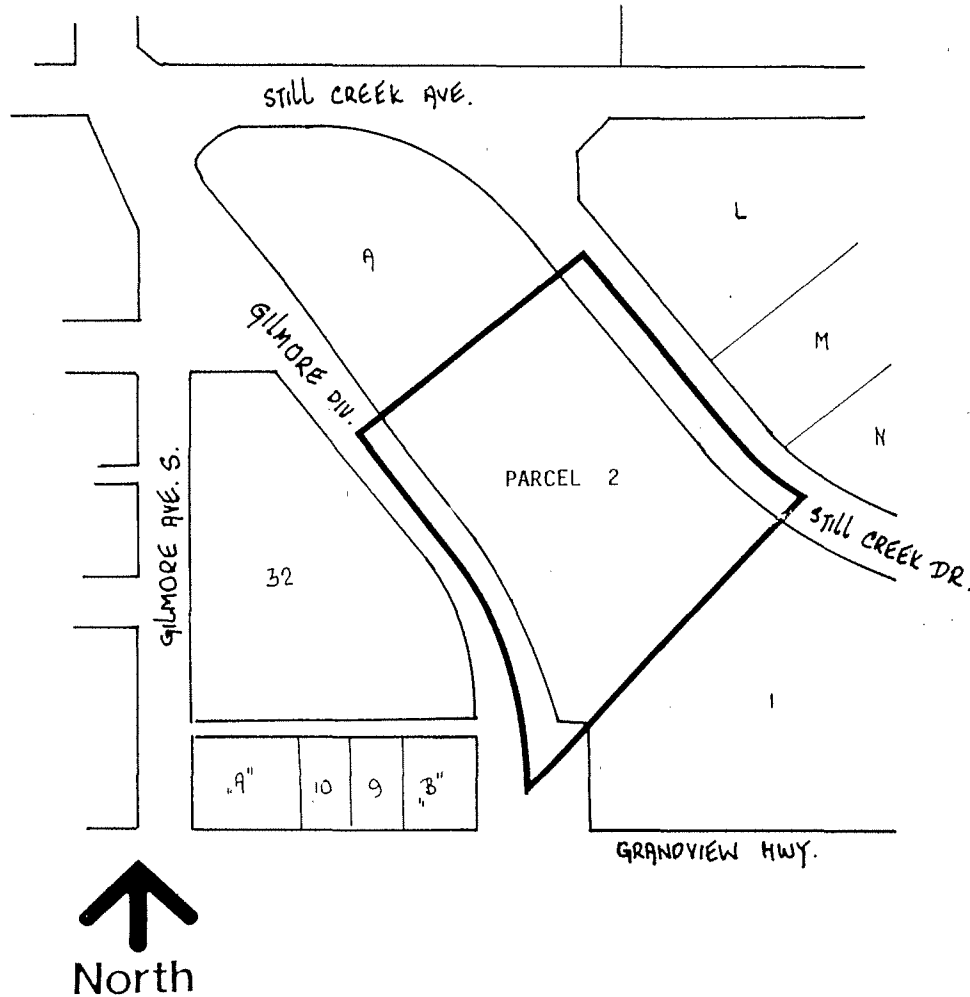
Read a first time this 1st day of JUNE 199 2
Read a second time this 22nd day of JUNE 199 2
Read a third time 13th day of MARCH 199 5
Received the approval of the Minister of Transportation and Highways
this 18th day of APRIL 199 5
Reconsidered and adopted this 28th day of AUGUST 199 5


MAYOR

CLERK

BYLAW NUMBER 9746 BEING A BYLAW TO AMEND RZ #40/91
 BYLAW NUMBER 4742 BEING THE BURNABY ZONING BYLAW 1965

PROPERTY REZONED TO: (AMENDED) CD COMPREHENSIVE DEVELOPMENT DISTRICT MAP "B"
 (BASED ON M5 LIGHT INDUSTRIAL DISTRICT GUIDELINES AND IN ACCORDANCE WITH THE DEVELOPMENT PLAN ENTITLED "WILLINGDON PARK PHASE IV" PREPARED BY INTERPLAN ARCHITECTURE AND PLANNING INC.).

LEGAL: PARCEL 2, DISTRICT LOT 69, LMP2106



THE AREA(S) SHOWN ABOVE
 OUTLINED IN BLACK (—)
 IS (ARE) REZONED:

FROM: CD COMPREHENSIVE DEVELOPMENT DISTRICT
 (BASED ON M5 LIGHT INDUSTRIAL DISTRICT)

TO: CD COMPREHENSIVE DEVELOPMENT DISTRICT
 (BASED ON M5 LIGHT INDUSTRIAL DISTRICT
 GUIDELINES AND IN ACCORDANCE WITH DEVELOPMENT PLAN
 ENTITLED "WILLINGDON PARK PHASE IV" PREPARED BY
 INTERPLAN ARCHITECTURE AND PLANNING INC.).

PLANNING DEPARTMENT	
SCALE	N.F.S.
DRAWN	J.P.C.
DATE	MAY 1992

THE CORPORATION OF THE DISTRICT OF BURNABY

OFFICIAL ZONING MAP