

THE CORPORATION OF THE DISTRICT OF BURNABY

BYLAW NO. 9742

A BYLAW to amend Bylaw No. 9528, being Burnaby Zoning  
Bylaw 1965, Amendment Bylaw No. 90, 1990

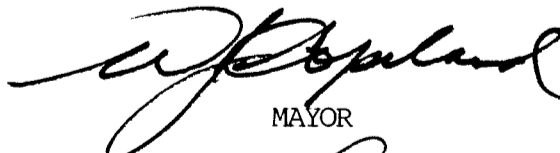
WHEREAS application for rezoning has been made to the Council;

AND WHEREAS the Council has held a public hearing thereon after duly giving notice of the hearing as prescribed by Sections 956 and 957 of the Municipal Act R.S.B.C. 1979;

NOW THEREFORE the Council of The Corporation of the District of Burnaby ENACTS as follows:

1. This Bylaw may be cited as BURNABY ZONING BYLAW 1965, AMENDMENT BYLAW NO. 26, 1992.
2. Bylaw No. 9528 is amended by repealing section 3 and substituting therefor the following:  
  
"3. The Comprehensive Development Plan entitled 'COMMERCIAL DEVELOPMENT - REVISED' prepared by URBAN DESIGN GROUP ARCHITECTS and on file in the office of the Director Planning and Building Inspection, is deemed to be attached to and form part of this Bylaw and any development on the lands rezoned by this Bylaw shall be in conformity with the said Comprehensive Development Plan."

Read a first time this	1st	day of	JUNE	1992
Read a second time this	22nd	day of	JUNE	1992
Read a third time this	8th	day of	SEPTEMBER	1992
Reconsidered and adopted this	14th	day of	SEPTEMBER	1992



MAYOR



CLERK

BYLAW NUMBER 9742

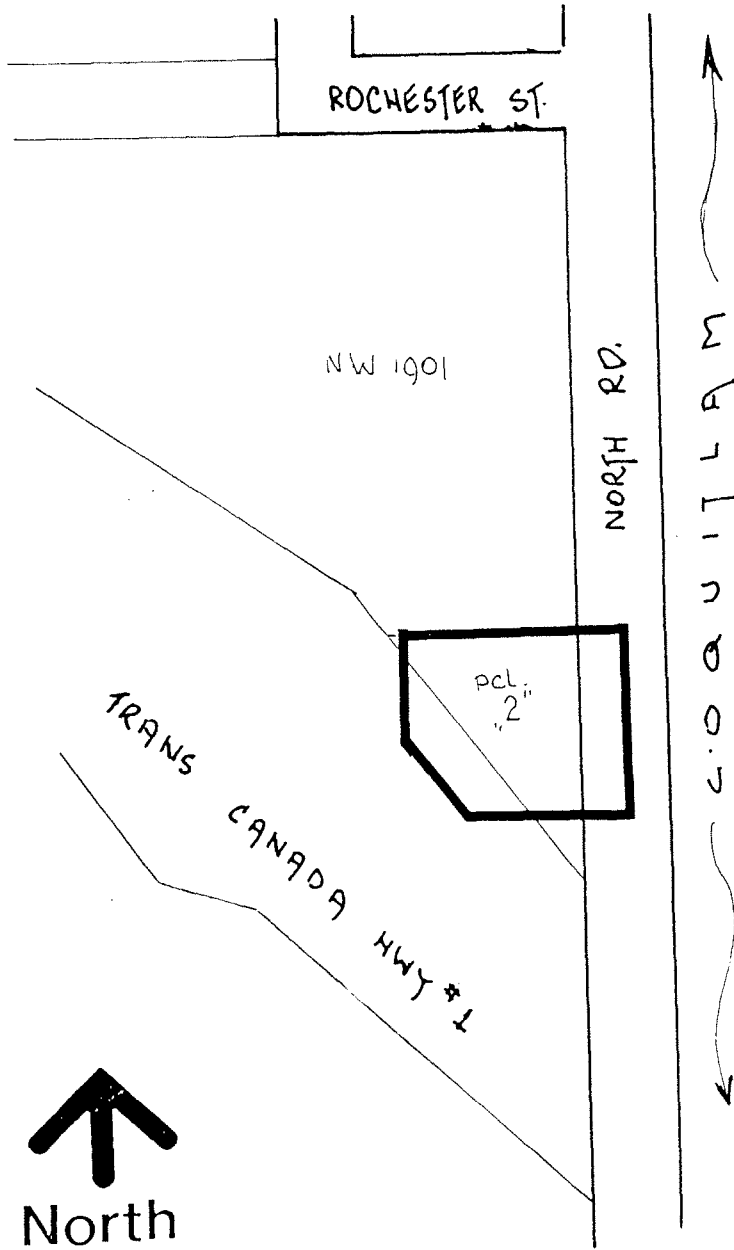
BEING A BYLAW TO AMEND RZ #21/92

BYLAW NUMBER 4742 BEING THE BURNABY ZONING BYLAW 1965

PROPERTY REZONED TO: (AMENDED) CD COMPREHENSIVE DEVELOPMENT DISTRICT  
(BASED ON C1 NEIGHBOURHOOD COMMERCIAL DISTRICT GUIDELINES)

MAP "B"

LEGAL: PCL. '2" (EXPL. PL. 10916) EXC. PART ON HIGHWAY STATUTORY R.O.W.  
PLAN 25870, BLOCK 23, D.L. 1, PLAN 3043



THE AREA(S) SHOWN ABOVE  
OUTLINED IN BLACK (—)  
IS (ARE) REZONED:

FROM: CD COMPREHENSIVE DEVELOPMENT DISTRICT  
(BASED ON C1 NEIGHBOURHOOD COMMERCIAL DISTRICT GUIDELINES)  
TO: CD COMPREHENSIVE DEVELOPMENT DISTRICT  
(BASED ON C1 NEIGHBOURHOOD COMMERCIAL DISTRICT GUIDELINES,  
AND IN ACCORDANCE WITH THE DEVELOPMENT PLAN ENTITLED  
"COMMERCIAL DEVELOPMENT" PREPARED BY URBAN DESIGN GROUP  
ARCHITECTS).

PLANNING DEPARTMENT

THE CORPORATION OF THE DISTRICT OF BURNABY

SCALE 1:2000

DRAWN J.P.C.

DATE MAY 1992

OFFICIAL ZONING MAP

No. RZ 1928