

THE CORPORATION OF THE DISTRICT OF BURNABY

BYLAW NO. 9600

A BYLAW to amend Bylaw No. 4742, being Burnaby Zoning Bylaw 1965, as amended by Bylaw No. 8828, being Burnaby Zoning Bylaw 1965, Amendment Bylaw No. 79, 1987

WHEREAS application for rezoning has been made to the Council.

AND WHEREAS the Council has held a public hearing thereon after duly giving notice of the hearing as prescribed by Sections 956 and 957 of the Municipal Act R.S.B.C. 1979.

NOW THEREFORE the Council of The Corporation of the District of Burnaby ENACTS as follows:

1. This Bylaw may be cited as BURNABY ZONING BYLAW 1965, AMENDMENT BYLAW NO. 28, 1991.
2. Bylaw No. 4742, as amended by Bylaw No. 8828 is further amended by striking out Section 3 of Bylaw No. 8828 and substituting therefor the following:

"3. The Comprehensive Development Plan entitled MARINE WAY BUSINESS CENTRE - PHASE III prepared by CHANDLER, KASIAN, KENNEDY ARCHITECTS LTD. and on file in the office of the Director Planning and Building Inspection, is deemed to be attached to and form part of this Bylaw and any development on the lands rezoned by this Bylaw shall be in conformity with the said Comprehensive Development Plan."

Read a first time this	8 th	day of	JULY	1991
Read a second time this	6 th	day of	AUGUST	1991
Read a third time this	30 th	day of	NOVEMBER	1992
Reconsidered and adopted this	24 th	day of	JULY	1995

MAYOR

CLERK

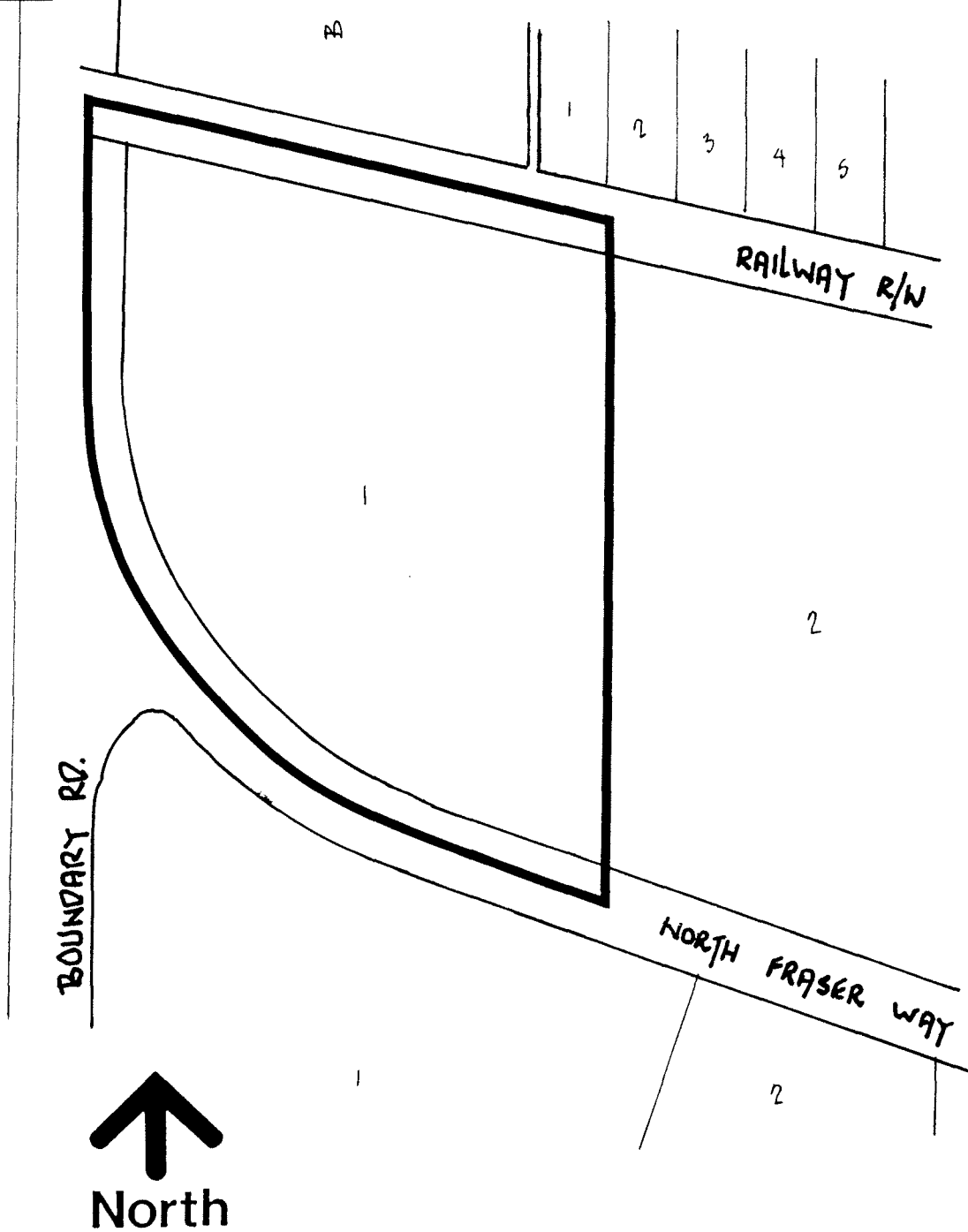
BYLAW NUMBER 9600 BEING A BYLAW TO AMEND RZ #43/88
 BYLAW NUMBER 4742 BEING THE BURNABY ZONING BYLAW 1965

PROPERTY REZONED TO:

MAP "B"

"AMENDED" CD COMPREHENSIVE DEVELOPMENT DISTRICT (BASED ON M5/M2 DISTRICT USE AND DENSITY, AND IN ACCORDANCE WITH THE DEVELOPMENT PLAN ENTITLED "MARINE WAY BUSINESS CENTRE - PHASE III", PREPARED BY CHANDLER, KASIAN, KENNEDY ARCHITECTS).

LEGAL: LOT 1, DISTRICT LOT 161, PLAN 78088



THE AREA(S) SHOWN ABOVE
 OUTLINED IN BLACK (—)
 IS (ARE) REZONED:

FROM: CD COMPREHENSIVE DEVELOPMENT DISTRICT
 (BASED ON M5/M2 DISTRICT GUIDELINES)
 TO: CD COMPREHENSIVE DEVELOPMENT DISTRICT
 (BASED ON M5/M2 DISTRICT USE AND DENSITY,
 AND IN ACCORDANCE WITH THE DEVELOPMENT PLAN
 ENTITLED "MARINE WAY BUSINESS CENTRE - PHASE III",
 PREPARED BY CHANDLER, KASIAN, KENNEDY ARCHITECTS).

PLANNING
 DEPARTMENT

THE CORPORATION OF THE DISTRICT OF BURNABY

SCALE 1:2000

DRAWN J.P.C.

DATE JUNE 1991

OFFICIAL ZONING MAP

No. RZ 1881