

THE CORPORATION OF THE DISTRICT OF BURNABY

BYLAW NO. 9538

A BYLAW to amend Bylaw No. 4742, being
Burnaby Zoning Bylaw 1965

WHEREAS application for rezoning has been made to the
Council.

AND WHEREAS the Council has held a public hearing
thereon after duly giving notice of the time and place of such
hearing as prescribed by Sections 956 and 957 of the Municipal
Act, R.S.B.C. 1979.

NOW THEREFORE the Council of The Corporation of the
District of Burnaby ENACTS as follows:

1. This Bylaw may be cited as BURNABY ZONING BYLAW 1965,
AMENDMENT BYLAW NO. 6, 1991.

2. The Map (hereinafter called "Map 'A'"), attached to and
forming an integral part of Bylaw No. 4742, being "Burnaby Zoning
Bylaw 1965", and designated as the Official Zoning Map of The
Corporation of the District of Burnaby, is hereby amended
according to the Map (hereinafter called "Map 'B'"), marginally
numbered R.Z. 1863, annexed to this Bylaw, and in accordance with
the explanatory legend, notations, references and boundaries
designated, described, delimited and specified in particularity
shown upon said Map 'B'; and the various boundaries and
districts shown upon said Map 'B' respectively are an amendment
of and in substitution for the respective districts, designated
and marked on said Map 'A' insofar as the same are changed,
modified or varied thereby, and the said Map 'A' shall be deemed
to be and is hereby declared to be amended accordingly and the
said Map 'B' is hereby declared to be and shall form an integral
part of said Map 'A', as if originally incorporated therein and
shall be interpreted accordingly.

3. The Comprehensive Development Plan entitled TOWNHOUSE DEVELOPMENT prepared by ROGER ROMSES ARCHITECTS and on file in the office of the Director Planning and Building Inspection, is deemed to be attached to and form part of this Bylaw and any development on the lands rezoned by this Bylaw shall be in conformity with the said Comprehensive Development Plan.

Read a first time this 28th day of JANUARY 1991
Read a second time this 25th day of FEBRUARY 1991
Read a third time this 27th day of APRIL 1992
Reconsidered and adopted this 13th day of JULY 1992

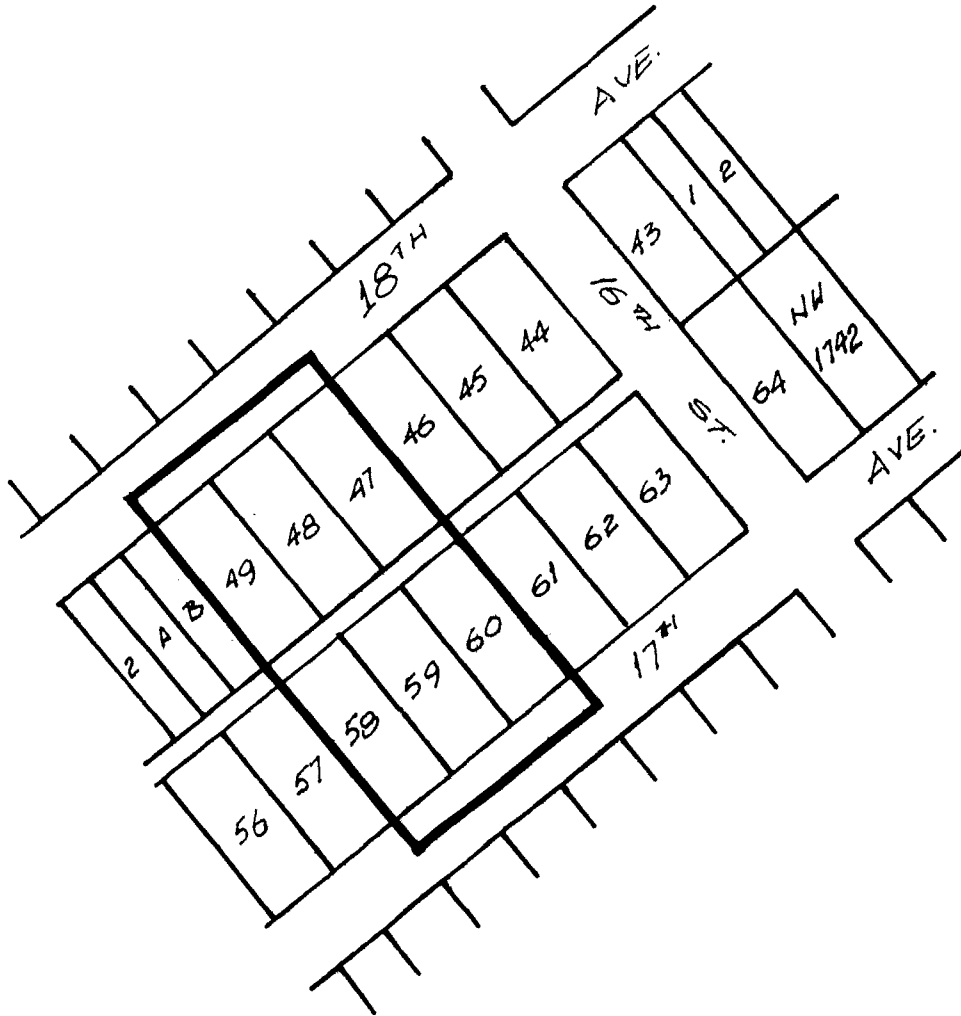

MAYOR


DEPUTY MUNICIPAL CLERK

BYLAW NUMBER 9538 BEING A BYLAW TO AMEND RZ 20/90
 BYLAW NUMBER 4742 BEING THE BURNABY ZONING BYLAW 1965

PROPERTY REZONED TO: CD COMPREHENSIVE DEVELOPMENT DISTRICT MAP B
 (BASED ON RM2 MULTIPLE FAMILY RESIDENTIAL DISTRICT
 USE AND DENSITY, AND IN ACCORDANCE WITH THE DEVELOPMENT PLAN
 ENTITLED "TOWNHOUSE DEVELOPMENT" PREPARED BY ROGER
 ROMSES ARCHITECTS)

LEGAL: LOTS 58, 59, 60, EXC. N.W. 10', PLAN 1152, DISTRICT LOT 95;
 LOTS 49, 48, 47, EXC. S.E. 10', PLAN 1152, DISTRICT LOT 95.



THE AREA(S) SHOWN ABOVE
 OUTLINED IN BLACK (—)
 IS (ARE) REZONED:

FROM: R5 RESIDENTIAL DISTRICT
 TO: CD COMPREHENSIVE DEVELOPMENT DISTRICT
 (BASED ON RM2 MULTIPLE FAMILY RESIDENTIAL DISTRICT
 USE AND DENSITY, AND IN ACCORDANCE WITH DEVELOPMENT PLAN
 ENTITLED "TOWNHOUSE DEVELOPMENT" PREPARED BY
 ROGER ROMSES ARCHITECTS.)



PLANNING DEPARTMENT	THE CORPORATION OF THE DISTRICT OF BURNABY	
SCALE	1:2000	OFFICIAL ZONING MAP No. RZ 1863
DRAWN		
DATE	08. 1990	