

THE CORPORATION OF THE DISTRICT OF BURNABY

BYLAW NO. 9518

A BYLAW to amend Bylaw No. 4742, being Burnaby Zoning Bylaw 1965, as amended by Bylaw No. 7496, being Burnaby Zoning Bylaw 1965, Amendment Bylaw No. 14, 1980

WHEREAS application for rezoning has been made to the Council.

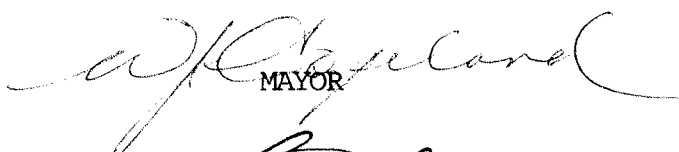
AND WHEREAS the Council has held a public hearing thereon after duly giving notice of the hearing as prescribed by Sections 956 and 957 of the Municipal Act R.S.B.C. 1979.


NOW THEREFORE the Council of The Corporation of the District of Burnaby ENACTS as follows:

1. This Bylaw may be cited as BURNABY ZONING BYLAW 1965, AMENDMENT BYLAW NO. 85, 1990.
2. Bylaw No. 4742, as amended by Bylaw No. 7496 is further amended by striking out Section 3 of Bylaw No. 7496 and substituting therefor the following:

"3. The Comprehensive Development Plan entitled MACMILLAN BLOEDEL WEST PARKING LOT prepared by DURANTE AND PARTNERS LANDSCAPE ARCHITECTS and on file in the office of the Director Planning and Building Inspection, is deemed to be attached to and form part of this Bylaw and any development on the lands rezoned by this Bylaw shall be in conformity with the said Comprehensive Development Plan."

Read a first time this	26th	day of	NOVEMBER	19 90
Read a second time this	14th	day of	JANUARY	1991
Read a third time this	21st	day of	JANUARY	1991
Reconsidered and adopted this	4th	day of	FEBRUARY	1991


MAYOR


CLERK

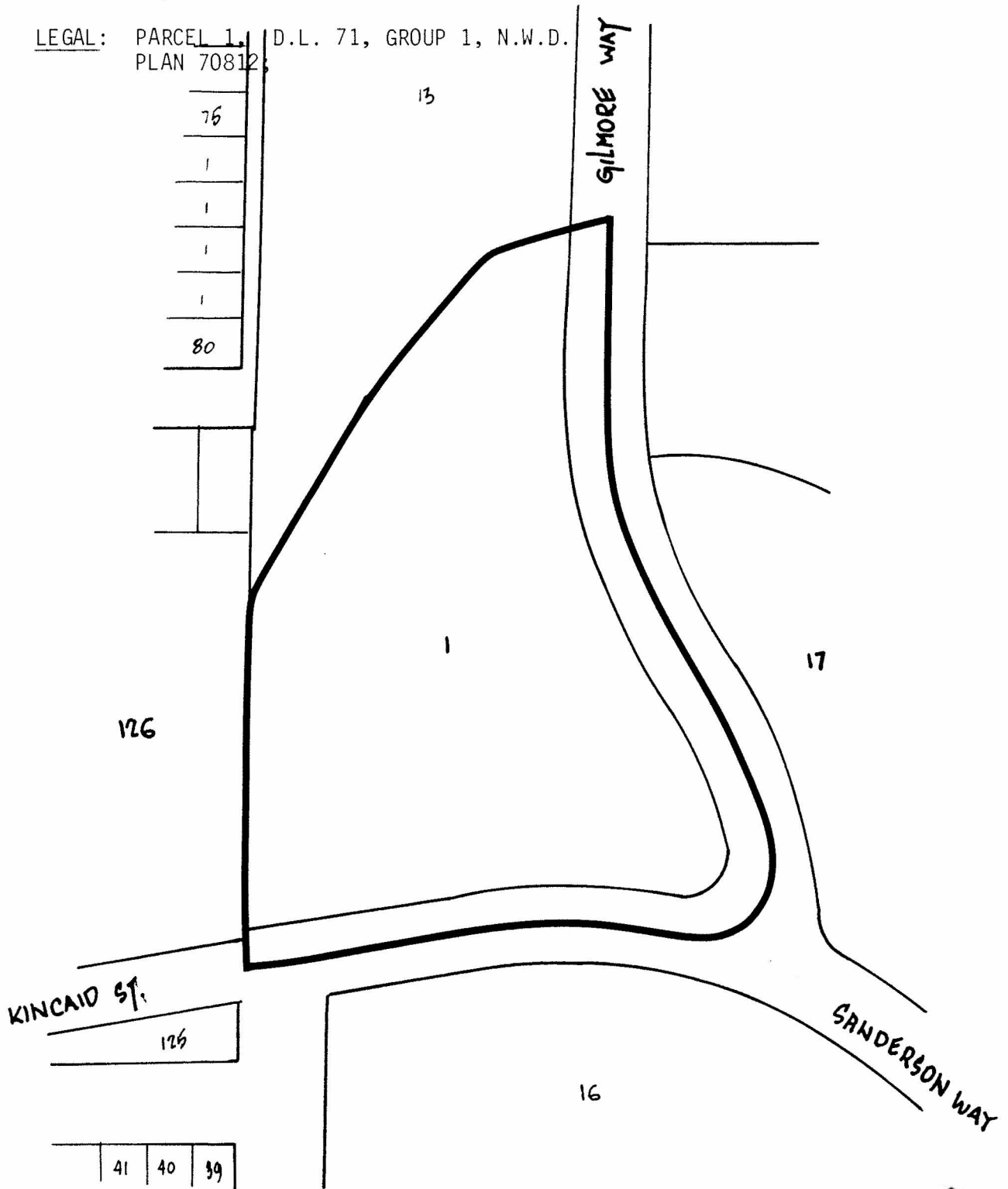
BYLAW NUMBER 9518 BEING A BYLAW TO AMEND RZ #60/90
BYLAW NUMBER 4742 BEING THE BURNABY ZONING BYLAW 1965

PROPERTY REZONED TO:

MAP "B"

"AMENDED" CD COMPREHENSIVE DEVELOPMENT DISTRICT (BASED UPON THE DISCOVERY PARKS COMMUNITY PLAN AS A GUIDELINE AND IN ACCORDANCE WITH THE DEVELOPMENT PLAN ENTITLED "MACMILLAN BLOEDEL WEST PARKING LOT" PREPARED BY DURANTE AND PARTNERS LANDSCAPE ARCHITECTS)

LEGAL: PARCEL 1, D.L. 71, GROUP 1, N.W.D.
 PLAN 70812;



THE AREA(S) SHOWN ABOVE
 OUTLINED IN BLACK (—)
 IS (ARE) REZONED:

FROM: CD COMPREHENSIVE DEVELOPMENT DISTRICT

TO: CD COMPREHENSIVE DEVELOPMENT DISTRICT (BASED UPON THE DISCOVERY PARKS COMMUNITY PLAN AS A GUIDELINE AND IN ACCORDANCE WITH THE DEVELOPMENT PLAN ENTITLED "MACMILLAN BLOEDEL WEST PARKING LOT" PREPARED BY DURANTE AND PARTNERS LANDSCAPE ARCHITECTS)

PLANNING DEPARTMENT	
SCALE	1:2000
DRAWN	J.P.C.
DATE	NOVEMBER 1990

THE CORPORATION OF THE DISTRICT OF BURNABY

OFFICIAL ZONING MAP

No. RZ 1854