

THE CORPORATION OF THE DISTRICT OF BURNABY

BYLAW NO. 9501

A BYLAW to amend Bylaw No. 4742, being  
Burnaby Zoning Bylaw 1965


WHEREAS application for rezoning has been made to the Council.


AND WHEREAS the Council has held a public hearing thereon after duly giving notice of the hearing as prescribed by sections 956 and 957 of the Municipal Act R.S.B.C. 1979.

NOW THEREFORE the Council of The Corporation of the District of Burnaby ENACTS as follows:

1. This Bylaw may be cited as BURNABY ZONING BYLAW 1965, AMENDMENT BYLAW NO. 68, 1990.
2. The map (hereinafter called "Map 'A'") attached to and forming an integral part of Bylaw No. 4742, being Burnaby Zoning Bylaw 1965, and designated as the Official Zoning Map of The Corporation of the District of Burnaby, is hereby amended according to the Map (hereinafter called "Map 'B'"), marginally numbered R.Z. 1837 annexed to this Bylaw, and in accordance with the explanatory legend, notations, references and boundaries designated, described, delimited and specified in particularity shown upon said Map 'B', and the various boundaries and districts shown upon said Map 'B', respectively are an amendment of and in substitution for the respective districts, designated and marked on said Map 'A' insofar as the same are changed, modified or varied thereby, and the said Map 'A' shall be deemed to be and is hereby declared to be amended accordingly and the said Map 'B' is hereby declared to be and shall form an integral part of said Map 'A' as if originally incorporated therein and shall be interpreted accordingly.

Read a first time this	26th	day of	NOVEMBER	1990
Read a second time this	14th	day of	JANUARY	1991
Read a third time this	28th	day of	JANUARY	1991
Reconsidered and adopted this	4th	day of	FEBRUARY	1991

  
MAYOR

  
CLERK

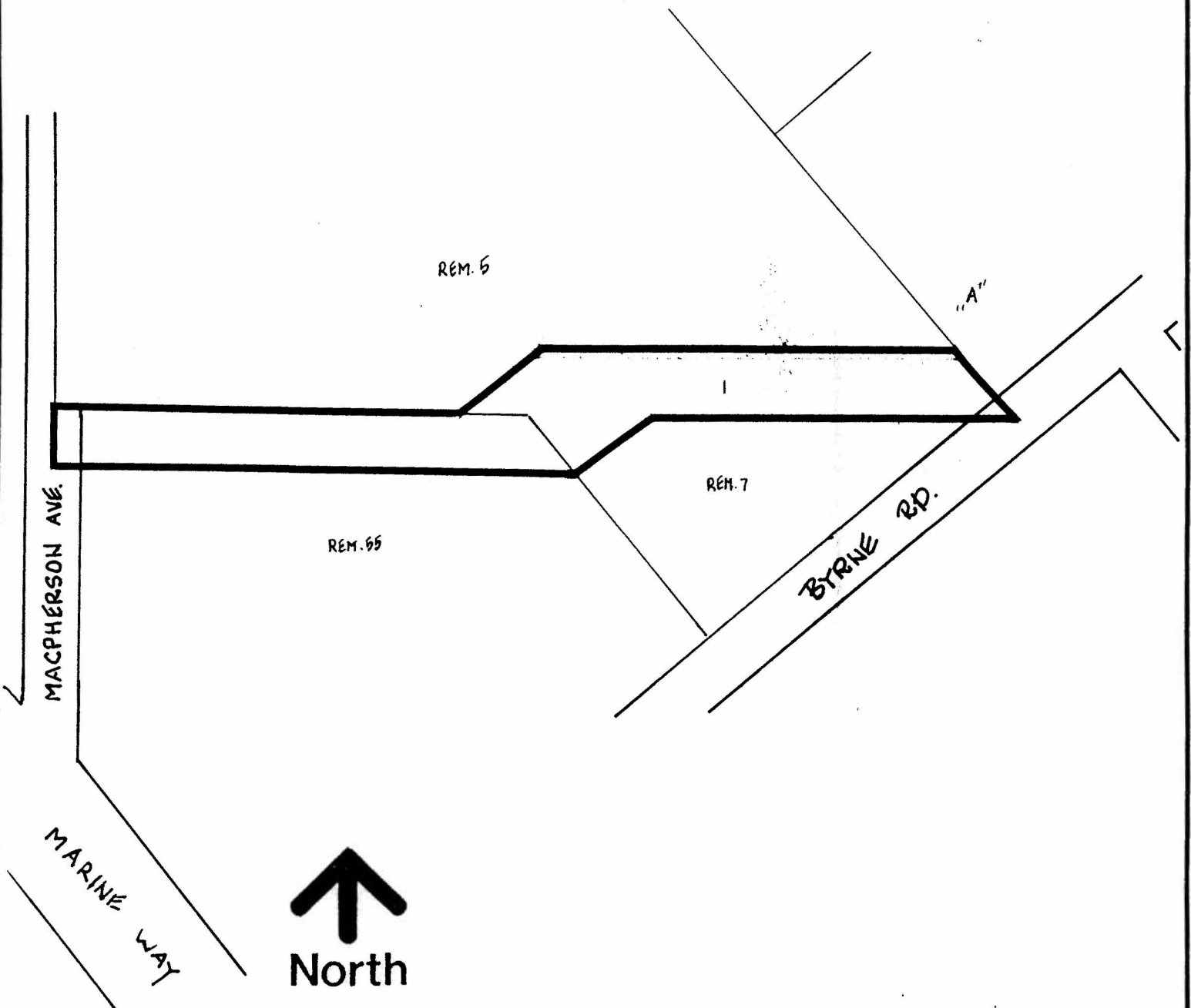
BYLAW NUMBER 9501 BEING A BYLAW TO AMEND RZ #51/90  
 BYLAW NUMBER 4742 BEING THE BURNABY ZONING BYLAW 1965  
 D) RELOCATED BYRNE CREEK

PROPERTY REZONED TO:

MAP "B"

P3 PARK AND PUBLIC USE DISTRICT

LEGAL: D.L. 162, LOT 1, PLAN 71476; D.L. 162, LOT PARK, PLAN 54043;



THE AREA(S) SHOWN ABOVE  
 OUTLINED IN BLACK (—)  
 IS (ARE) REZONED:

FROM: A3 TRUCK GARDENING DISTRICT AND  
 M2 GENERAL INDUSTRIAL DISTRICT  
 TO: P3 PARK AND PUBLIC USE DISTRICT

PLANNING DEPARTMENT		THE CORPORATION OF THE DISTRICT OF BURNABY	
SCALE	1:2000	OFFICIAL ZONING MAP	
DRAWN	J.P.C.		
DATE	NOVEMBER 1990		
		No. RZ 1837	