

THE CORPORATION OF THE DISTRICT OF BURNABY

BYLAW NO. 9486

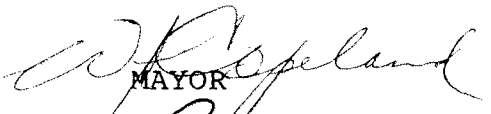
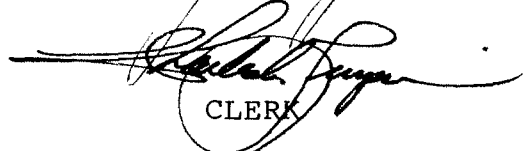
A BYLAW to stop up and close to traffic  
portion of road

WHEREAS that portion of road shown on the plan annexed hereto dedicated by Plan 4953 is no longer required for road purposes.

NOW THEREFORE the Council of The Corporation of the District of Burnaby ENACTS as follows:

1. This Bylaw may be cited as BURNABY ROAD CLOSING BYLAW NO. 3, 1990.
  
2. That portion of road situate, lying and being in the Municipality of Burnaby, in the Province of British Columbia, and being more particularly known and described as that portion of road in District Lot 155A, Group 1, New Westminster District, dedicated by the deposit of Plan 1425 containing by admeasurement 51.87 m<sup>2</sup> shown outlined on the plan prepared by E. Kaardal, B.C.L.S., certified correct the 23rd day of October, 1990, a copy of which is annexed hereto, is hereby stopped up and closed to traffic.
  
3. The Municipal Clerk is hereby authorized and empowered to petition the Minister of Municipal Affairs to abandon the said portion of road more particularly described in section 2 hereof and vest title thereto in the name of The Corporation of the District of Burnaby.

Read a first time this 5th day of NOVEMBER 1990  
Read a second time this 5th day of NOVEMBER 1990  
Read a third time this 5th day of NOVEMBER 1990  
Reconsidered and adopted this 13th day of NOVEMBER 1990

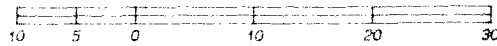
  
MAYOR  
  
CLERK

EXPLANATORY PLAN TO ACCOMPANY THE CORPORATION OF THE  
 DISTRICT OF BURNABY ROAD CLOSING BYLAW NO. \_\_\_\_\_  
 OVER A PORTION OF ROAD IN DISTRICT LOT 155A GROUP 1  
 N.W.D. DEDICATED BY PLAN 1425.

B.C.L.S. 926.026

ACCORDING TO PLAN 83707

SCALE 1:500



All distances are in metres.

LEGEND

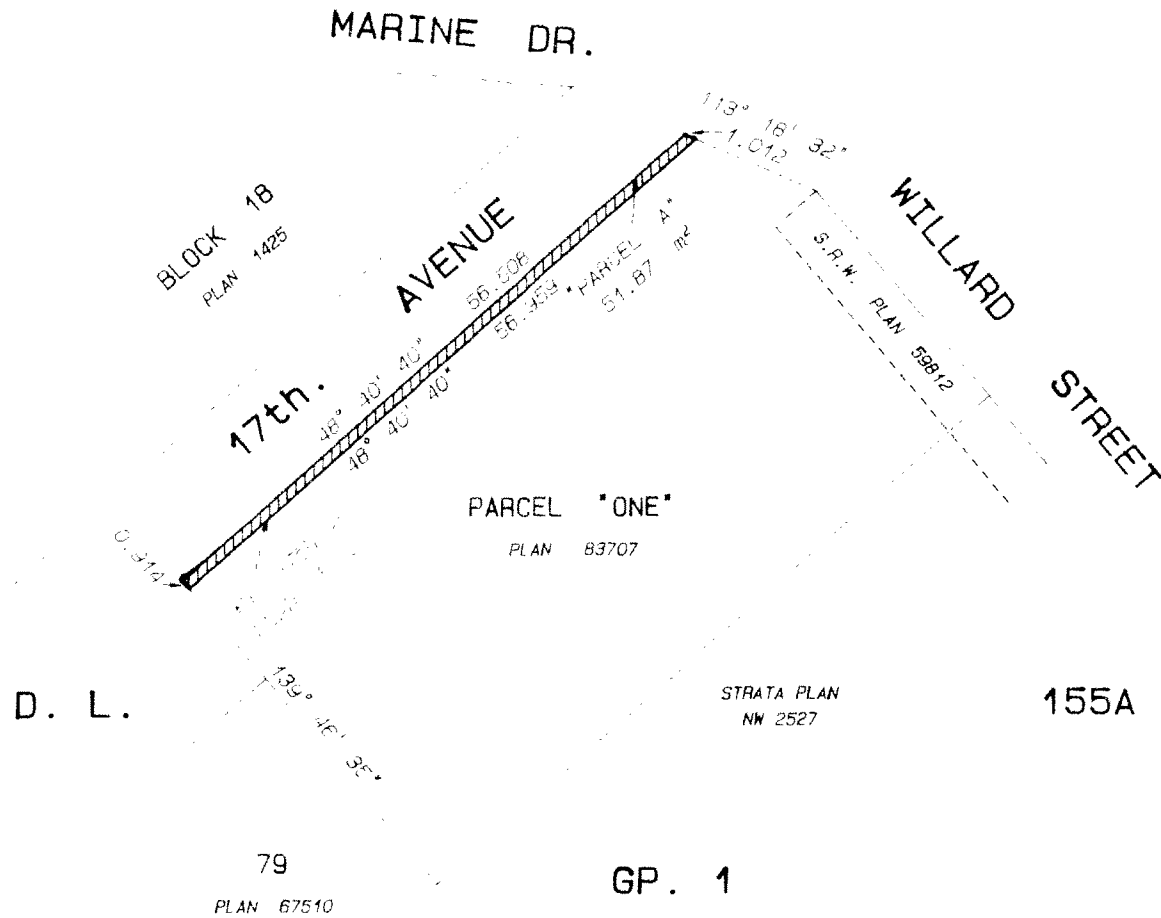
m<sup>2</sup> denotes square metres.

~~~~~ denotes Road to  
 be closed.

PLAN \_\_\_\_\_

DEPOSITED IN THE LAND TITLE OFFICE  
 AT NEW WESTMINSTER, B.C.  
 THIS \_\_\_\_\_ DAY OF \_\_\_\_\_ 19\_\_\_\_

ASSISTANT DEPUTY REGISTRAR  
 REF NO. \_\_\_\_\_



THE CORPORATION OF THE  
 DISTRICT OF BURNABY

*[Signature]*  
 MAYOR  
*[Signature]*  
 MUNICIPAL CLERK

HARGRAVES & ASSOCIATES

Professional Land Surveyors  
 7542 Edmonds Street, Burnaby, B.C.  
 V3M 1B4 Tel. 522-1779  
 File No. 1865

CERTIFIED CORRECT ACCORDING TO  
 LAND TITLE OFFICE RECORDS,  
 THIS 23RD DAY OF OCTOBER, 1990

*[Signature]*  
 B.C.L.S.

This Plan Lies Within  
 The Greater Vancouver Regional District