

THE CORPORATION OF THE DISTRICT OF BURNABY

BYLAW NO. 9474

A BYLAW to amend Bylaw No. 4742, being Burnaby Zoning Bylaw 1965, as amended by Bylaw No. 9341, being Burnaby Zoning Bylaw 1965, Amendment Bylaw No. 7, 1990

WHEREAS application for rezoning has been made to the Council.

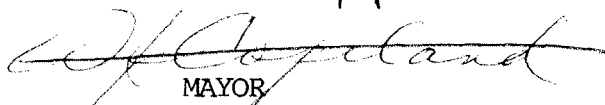
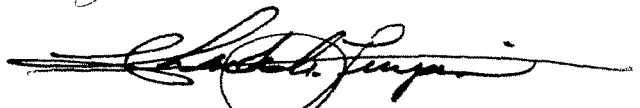
AND WHEREAS the Council has held a public hearing thereon after duly giving notice of the hearing as prescribed by Sections 956 and 957 of the Municipal Act R.S.B.C. 1979.

NOW THEREFORE the Council of The Corporation of the District of Burnaby ENACTS as follows:

1. This Bylaw may be cited as BURNABY ZONING BYLAW 1965, AMENDMENT BYLAW NO. 59, 1990.
2. Bylaw No. 4742, as amended by Bylaw No. 9341 is further amended by striking out Section 3 of Bylaw No. 9341 and substituting therefor the following:

"3. The Comprehensive Development Plan entitled PROPOSED BUILDING FOR THE UNITED WAY OF THE LOWER MAINLAND prepared by THE DOMINION COMPANY and on file in the office of the Director Planning and Building Inspection, is deemed to be attached to and form part of this Bylaw and any development on the lands rezoned by this Bylaw shall be in conformity with the said Comprehensive Development Plan."

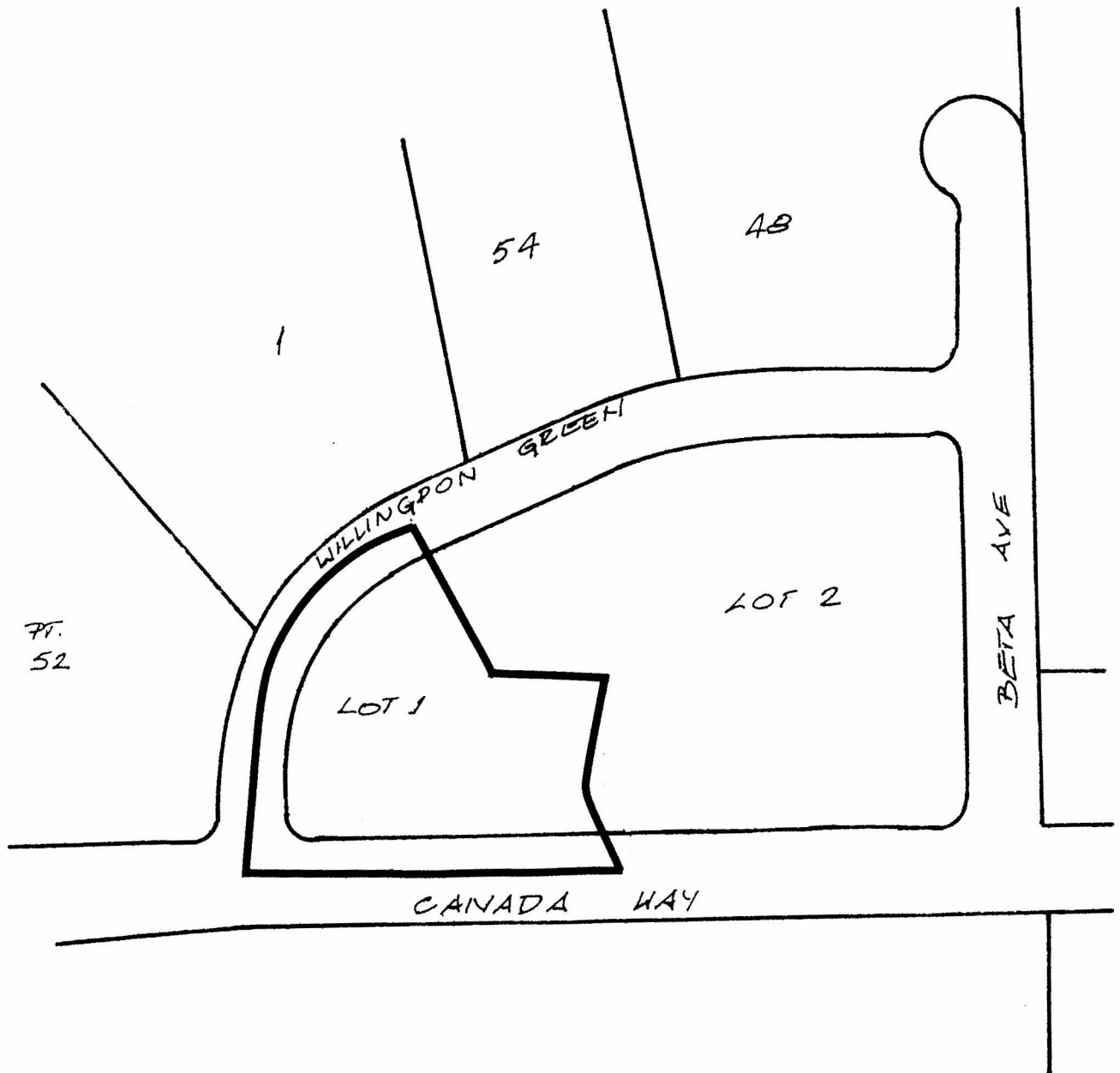
Read a first time this 1st day of OCTOBER 1990
Read a second time this 5th day of NOVEMBER 1990
Read a third time this 28th day of JANUARY 1990
Reconsidered and adopted this ~~4th~~ ^{25th} day of ~~FEBRUARY~~ MARCH 1991


MAYOR

CLERK

BYLAW NUMBER 9474 BEING A BYLAW TO AMEND #46/90
 BYLAW NUMBER 4742 BEING THE BURNABY ZONING BYLAW 1965

PROPERTY REZONED TO: "AMENDED" CD COMPREHENSIVE DEVELOPMENT DISTRICT MAP "B"
 (BASED ON M5 LIGHT INDUSTRIAL USE GUIDELINES AND THE COMMUNITY PLAN GUIDELINES) AND IN ACCORDANCE WITH
 THE DEVELOPMENT PLAN ENTITLED "PROPOSED BUILDING FOR THE UNITED WAY OF THE LOWER MAINLAND" PREPARED BY
 CHARLES BENTALL ARCHITECTS.

LEGAL: LOT 1, DISTRICT LOT 70, GROUP 1, N.W.D. PLAN 85716.



THE AREA(S) SHOWN ABOVE
 OUTLINED IN BLACK (—)
 IS (ARE) REZONED:

FROM: CD COMPREHENSIVE DEVELOPMENT DISTRICT
 TO: CD. COMPREHENSIVE DEVELOPMENT DISTRICT
 (BASED ON M5 LIGHT INDUSTRIAL USE GUIDELINES
 AND THE COMMUNITY PLAN GUIDELINES) AND IN
 ACCORDANCE WITH DEVELOPMENT PLAN ENTITLED
 "PROPOSED BUILDING FOR THE UNITED WAY OF THE
 LOWER MAINLAND" PREPARED BY CHARLES BENTALL
 ARCHITECTS.

PLANNING DEPARTMENT		THE CORPORATION OF THE DISTRICT OF BURNABY	
SCALE	1:2000	OFFICIAL ZONING MAP No. RZ 1827	
DRAWN			
DATE	1990 OCT.		